



Mission Plaza

Assessment and Master Plan Update

Community Workshop #2

Presentation of Conceptual Design Alternatives



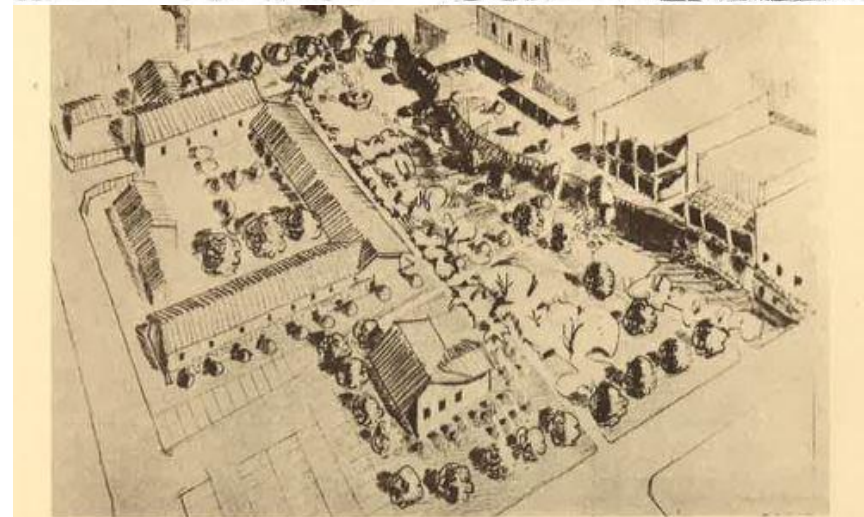
Project Goals

- Provide a long term vision for Mission Plaza and the Broad Street dog-leg
- Respect the Plaza's relationship to the Mission, the Creek, & Downtown
- Preserve the Plaza's unique sense of place
- Improve functionality and flexibility for variety of uses
- Address ongoing maintenance and operational issues
- Enhance ADA accessibility



History & Background

Mission Plaza has a history of change



Prize-winning proposal for Mission Plaza by James A. Zisch, February 1955.
Picture courtesy of *Telegram-Tribune*.

- Monterey Street pre 1970's
- Concept Plans in 1955, 1963 and 1964

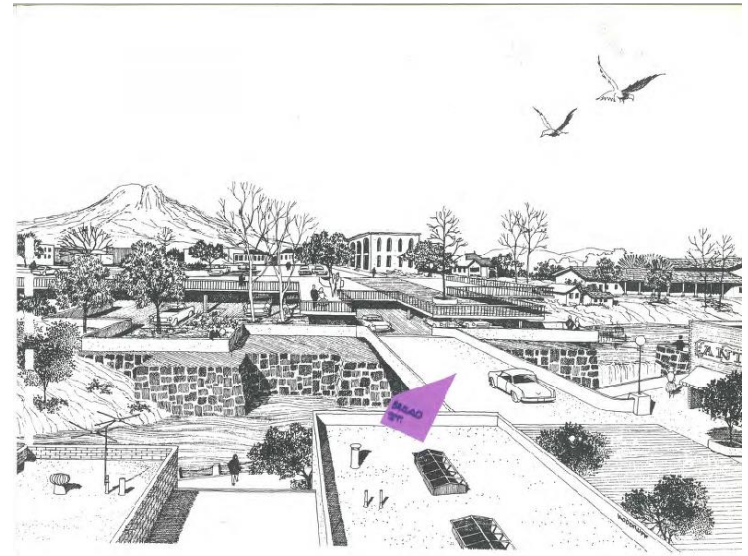
Images courtesy of Ken Schwartz



History & Background



- Concept Plans in 1955, 1963 and 1964
- Approved Monterey closure in 1966
- Opened to the public in 1971



Images courtesy of Ken Schwartz



Existing Conditions



Existing Conditions – Ongoing Maintenance



What have we done so far?

- Community event in Mission Plaza
- Meetings with a variety of stakeholders
- Reviewed previous studies and designs
- Conducted initial technical studies
- Researched other cities with similar public spaces
- Translated community input into two concept plans
- ...and spent lots of time in the plaza!

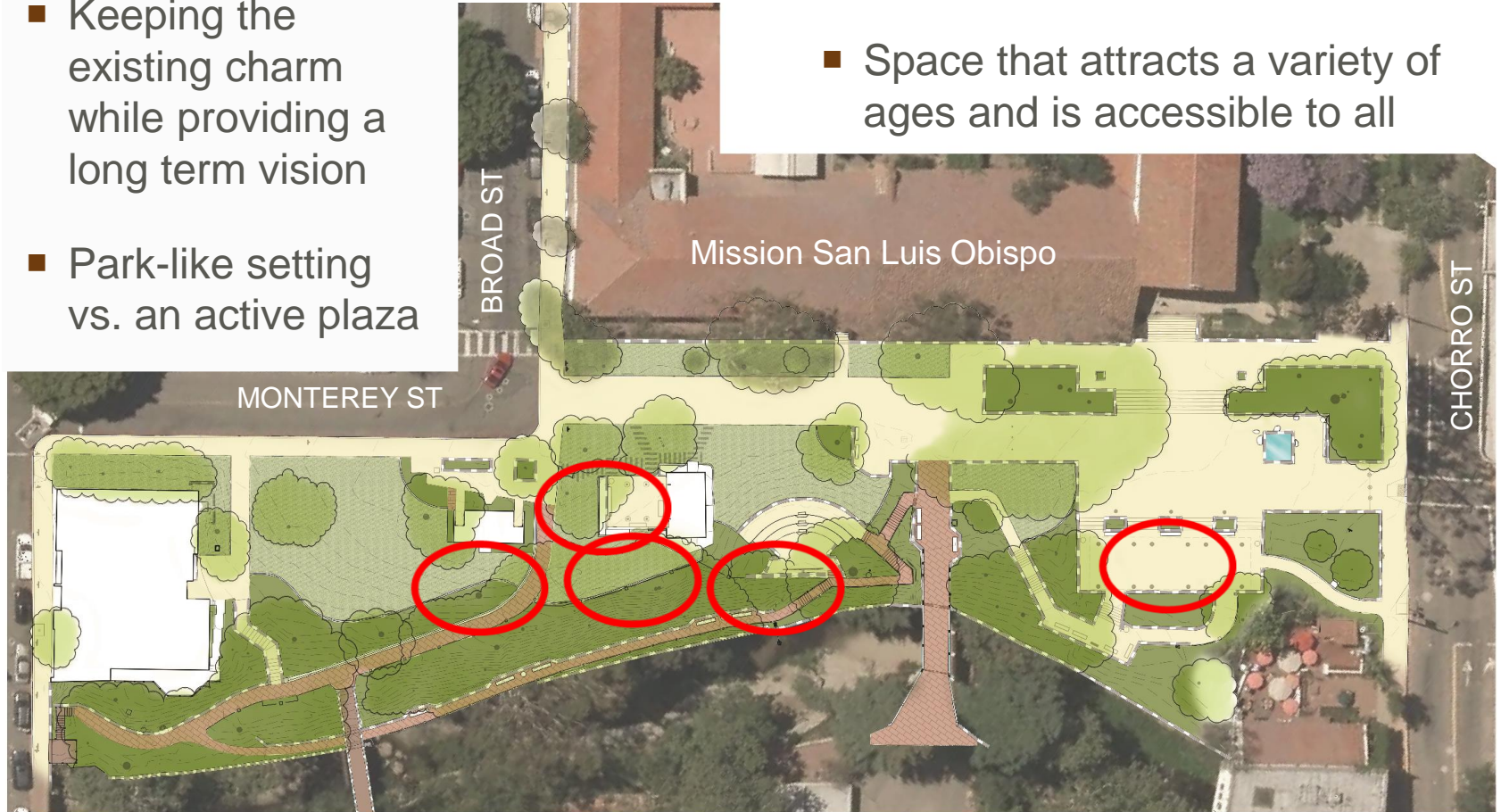


What we've heard

Balancing:

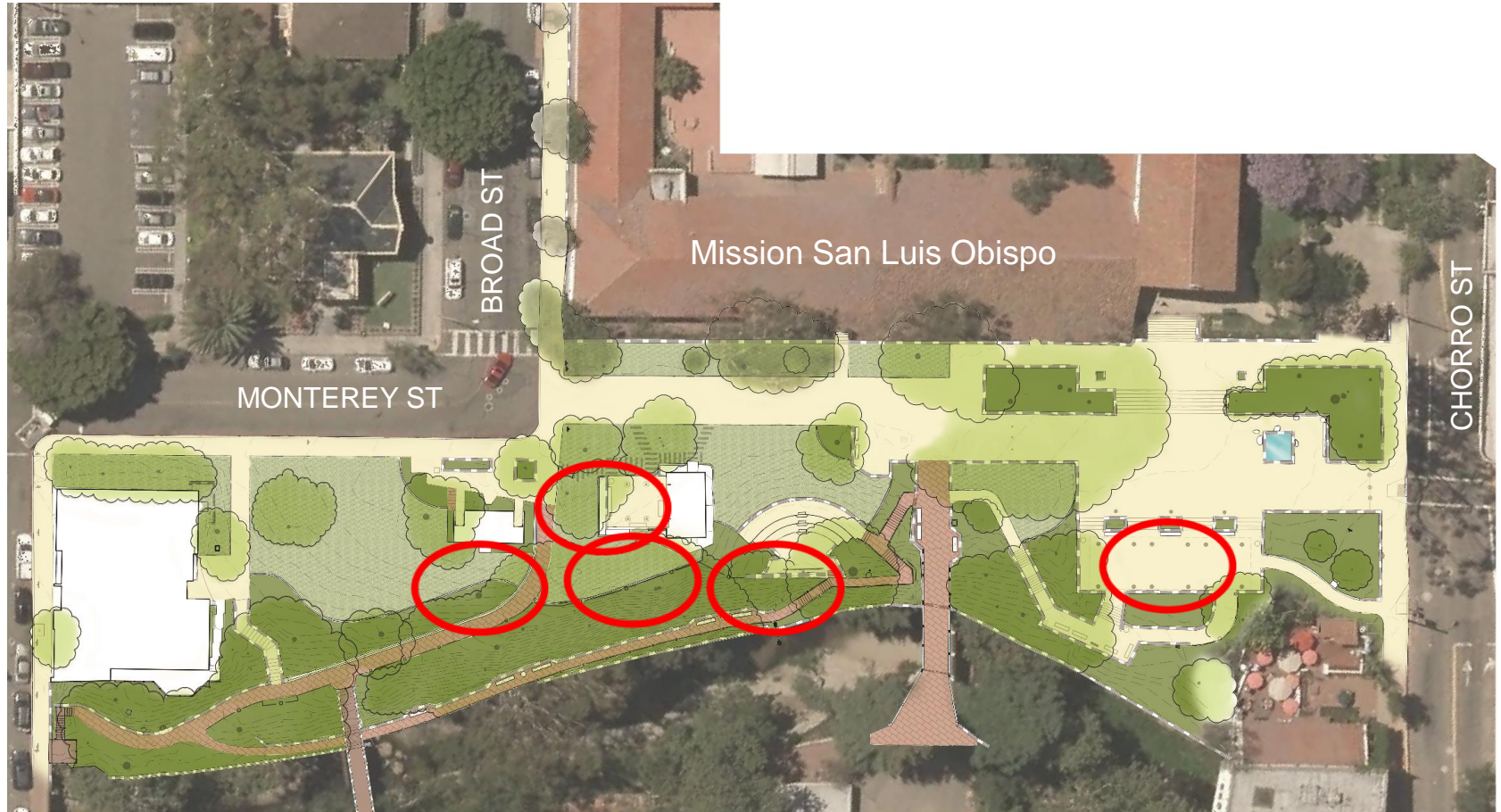
- Keeping the existing charm while providing a long term vision
- Park-like setting vs. an active plaza

- Quiet serene space vs. flexible space for events and activities
- Space that attracts a variety of ages and is accessible to all



What we've heard

- Need to activate spaces to improve safety



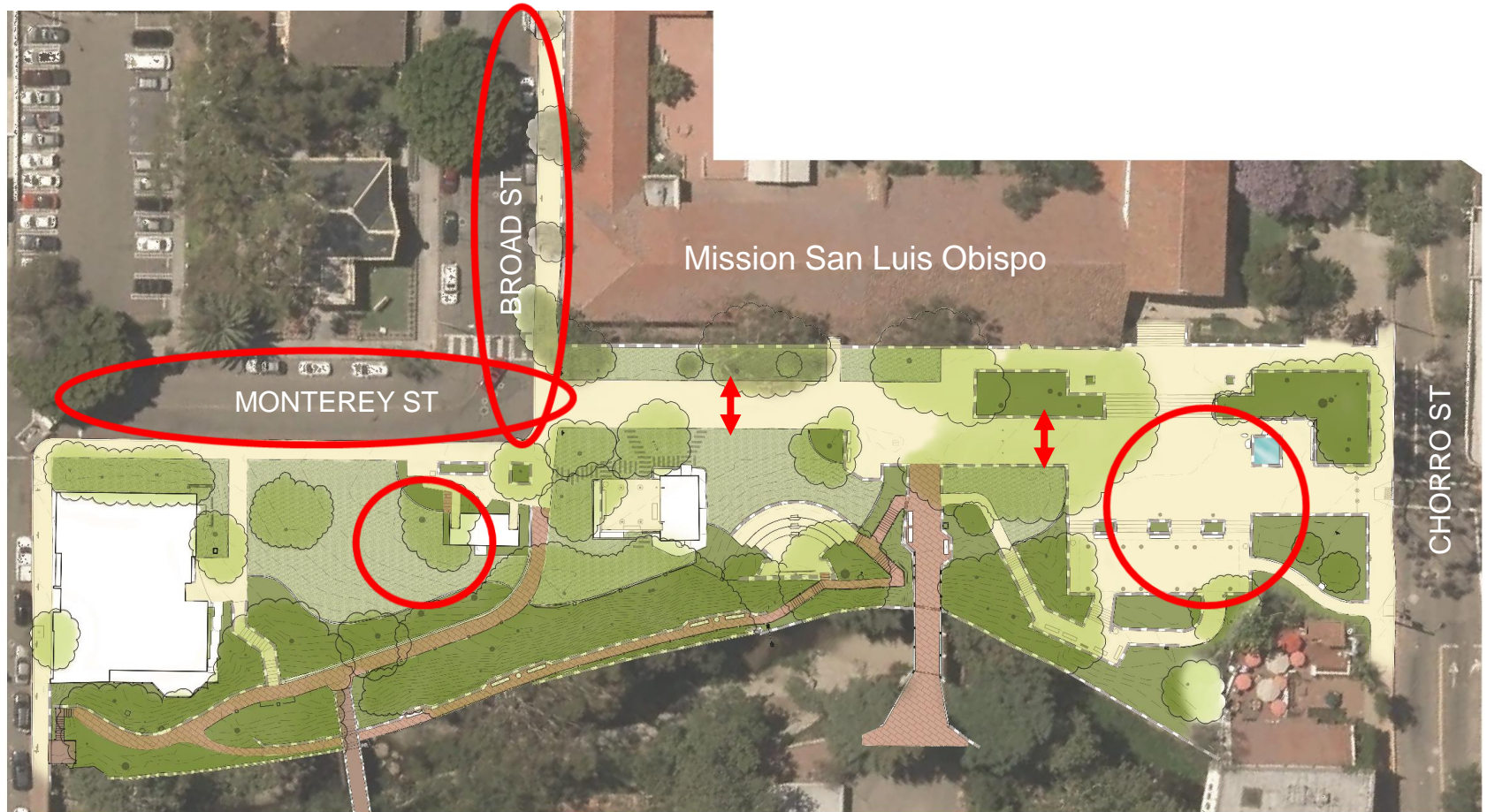
What we've heard

- Improve connections to and within Mission Plaza



What we've heard

- Create more flexible and functional spaces



What we've heard

- Improve Amphitheater



Preserved Features

- Murray Adobe
- Warden Bridge & Pedestrian Bridge
- Most Trees
- Bear Fountain

- Amphitheater
- Fire/Emergency Access

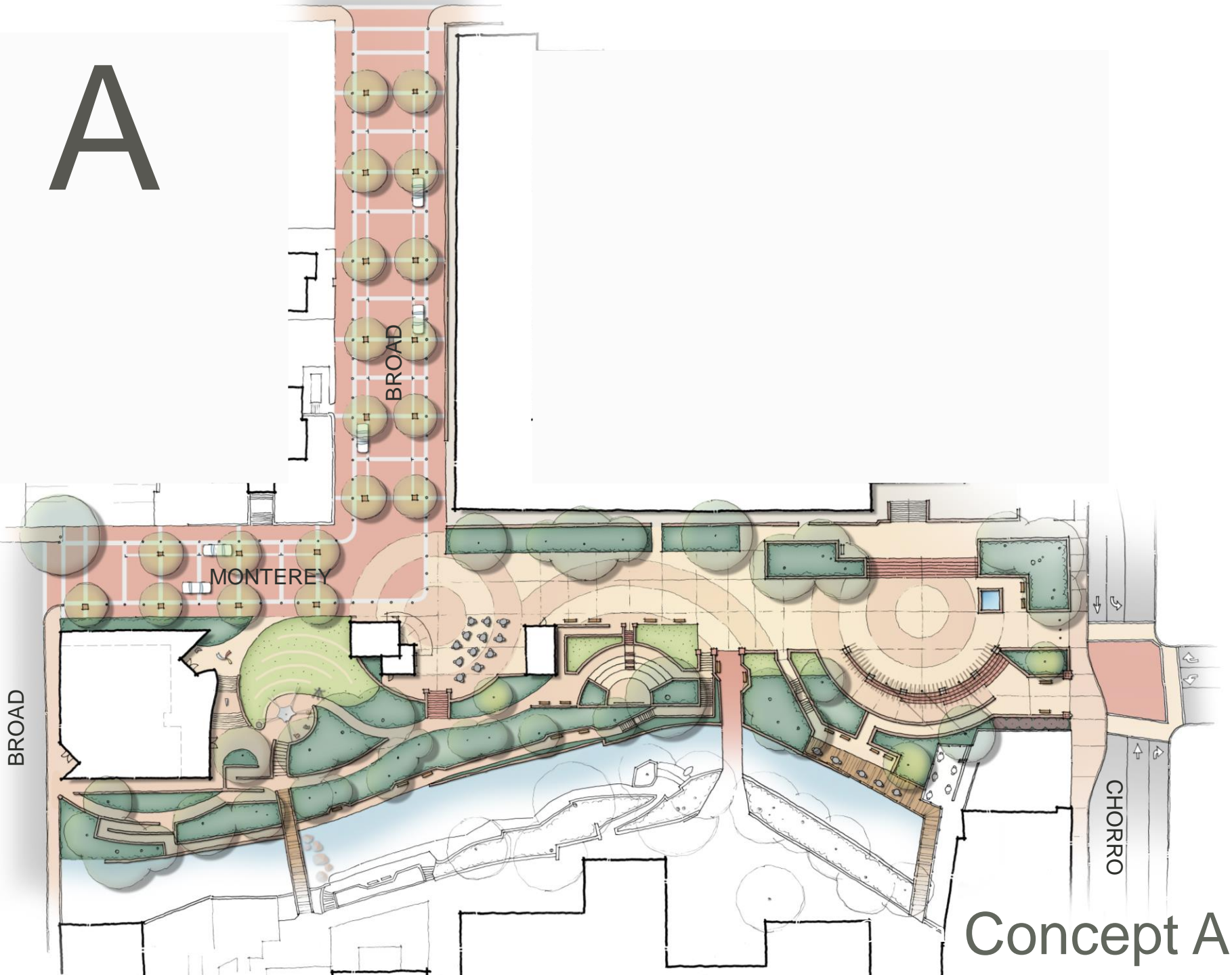


Design Alternatives

- Two different design alternatives
- Both designs include, at a minimum:
 - New restroom
 - New lighting
 - New signage
 - Consistent furnishings
 - Durable, low-maintenance paving
 - Public art
 - Historic educational information
 - Improved storm water management
 - Improved accessibility
 - New proposed Museum of Art footprint



A

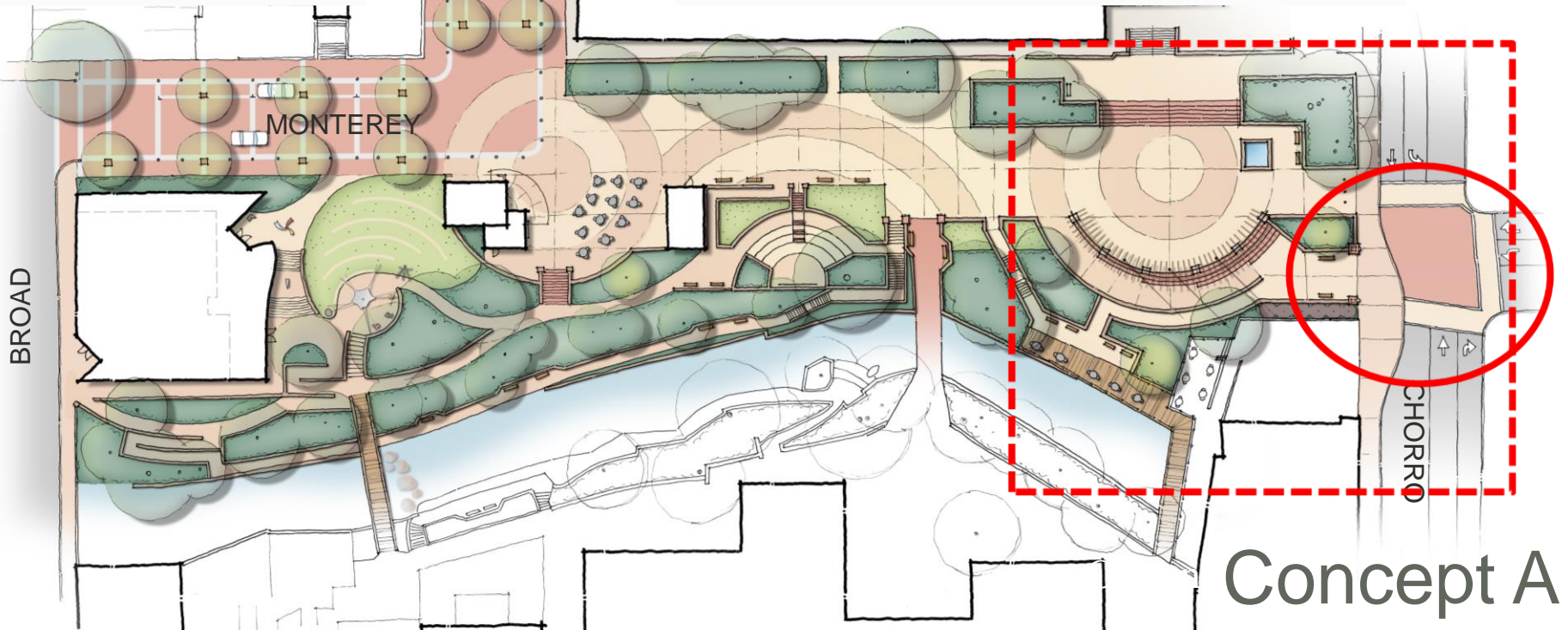


Concept A

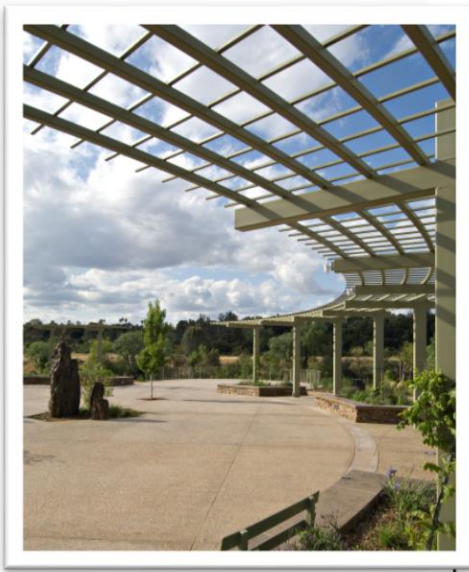


FEATURES INCLUDE:

- Prominent pedestrian gateway
- Improved intersection on Chorro St.
- Expanded, level plaza
- Curved trellis
- Lower creek terrace
- Potential new bridge connection

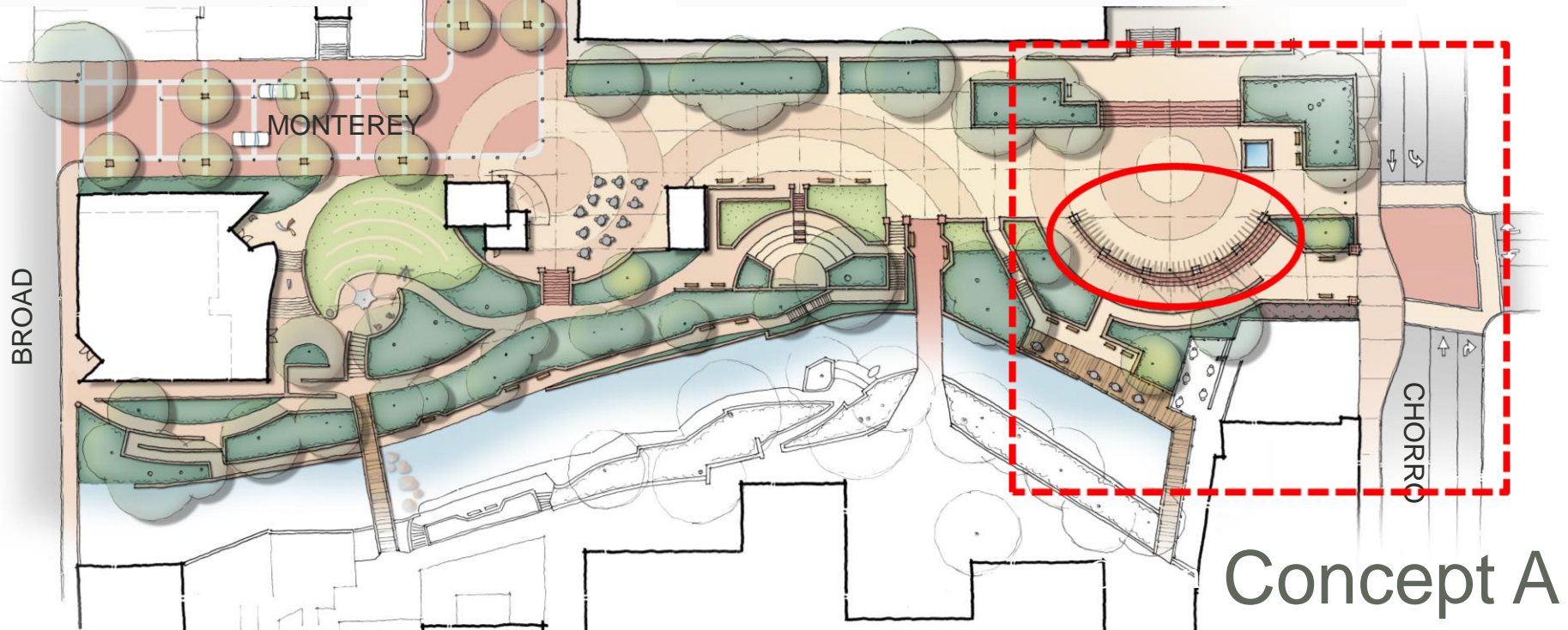


Concept A



FEATURES INCLUDE:

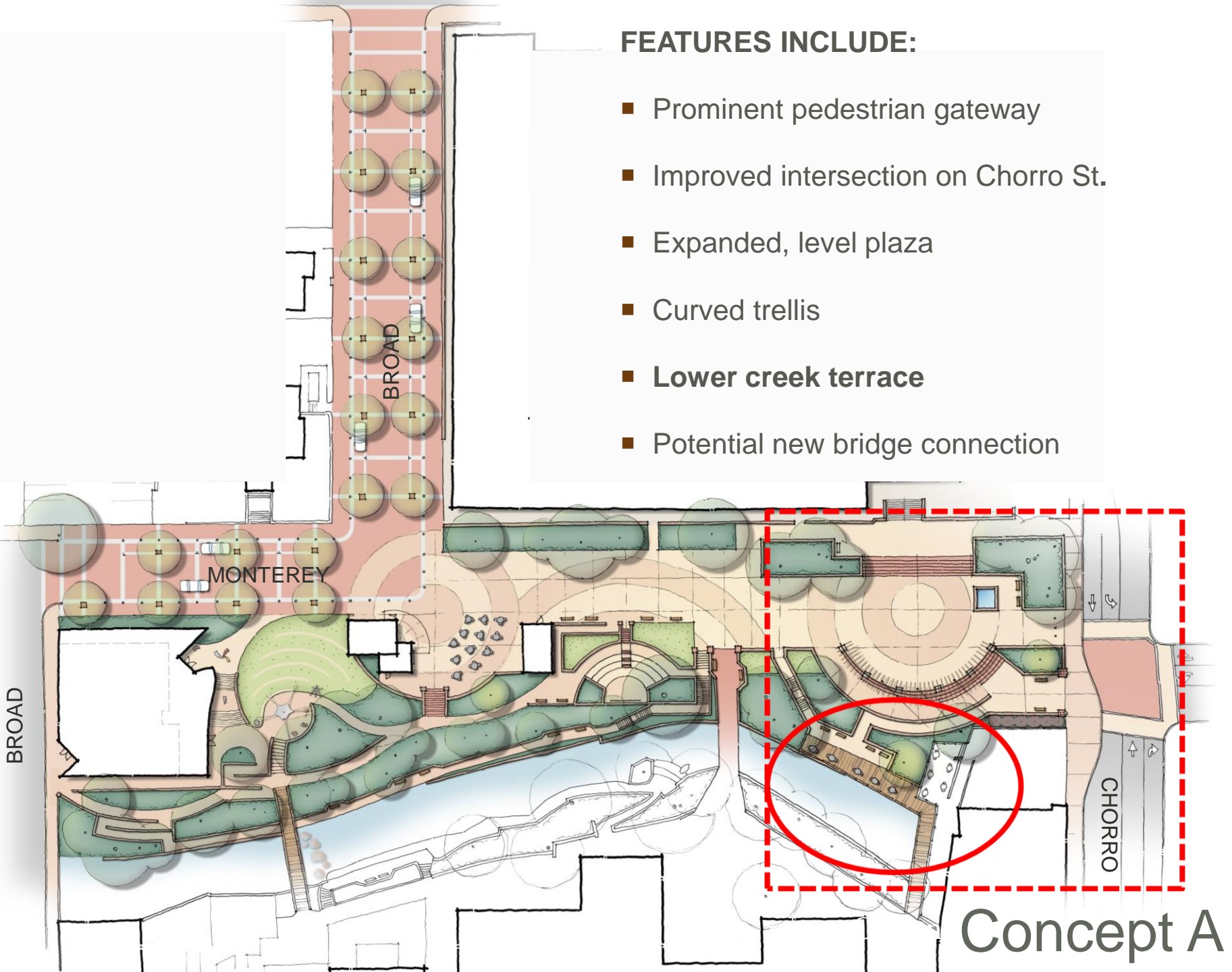
- Prominent pedestrian gateway
- Improved intersection on Chorro St.
- Expanded, level plaza
- **Curved trellis**
- Lower creek terrace
- Potential new bridge connection



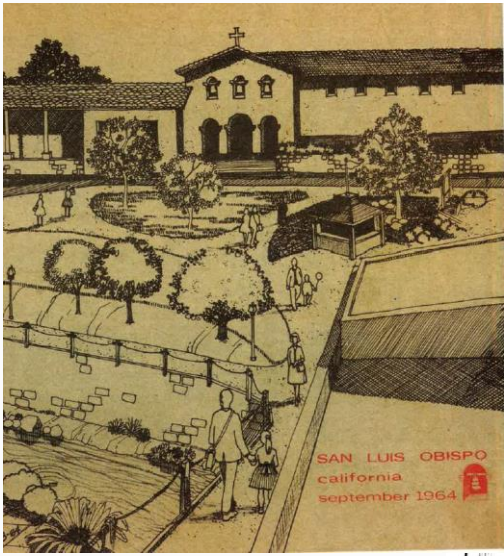
Concept A

FEATURES INCLUDE:

- Prominent pedestrian gateway
- Improved intersection on Chorro St.
- Expanded, level plaza
- Curved trellis
- **Lower creek terrace**
- Potential new bridge connection

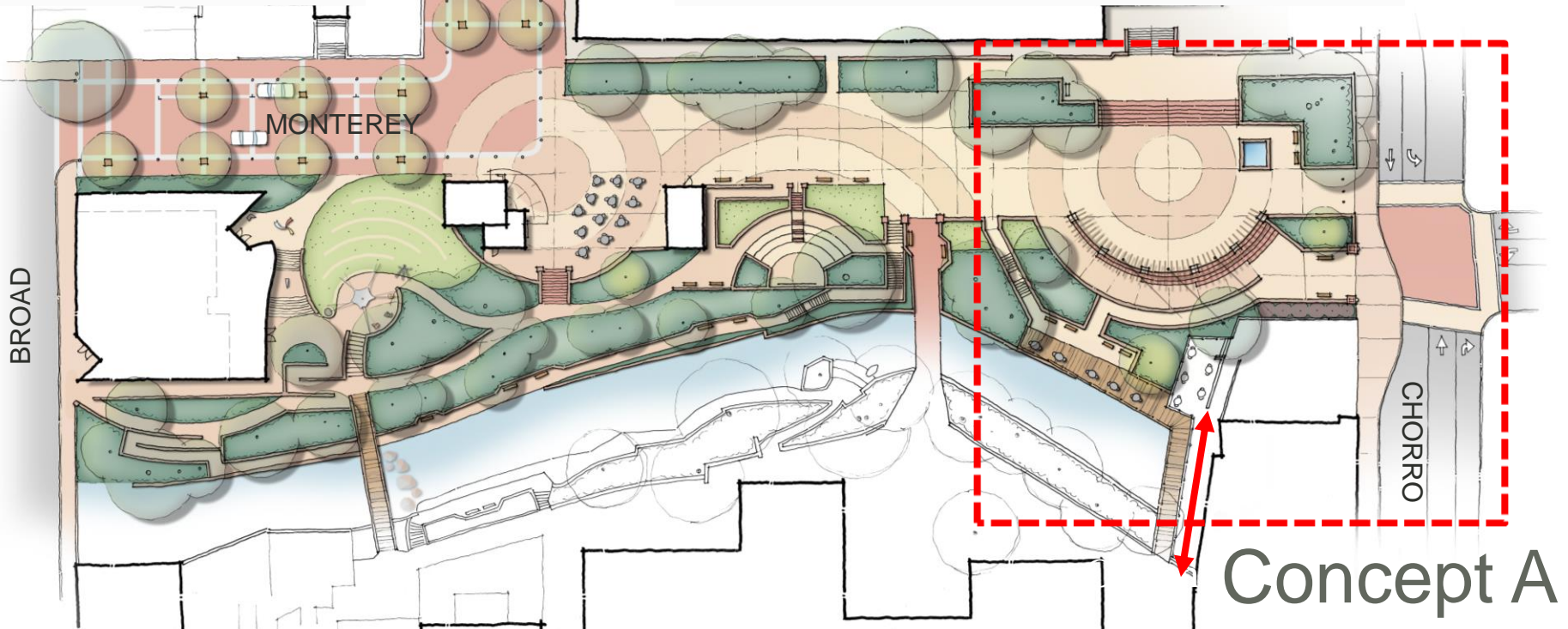


Concept A



FEATURES INCLUDE:

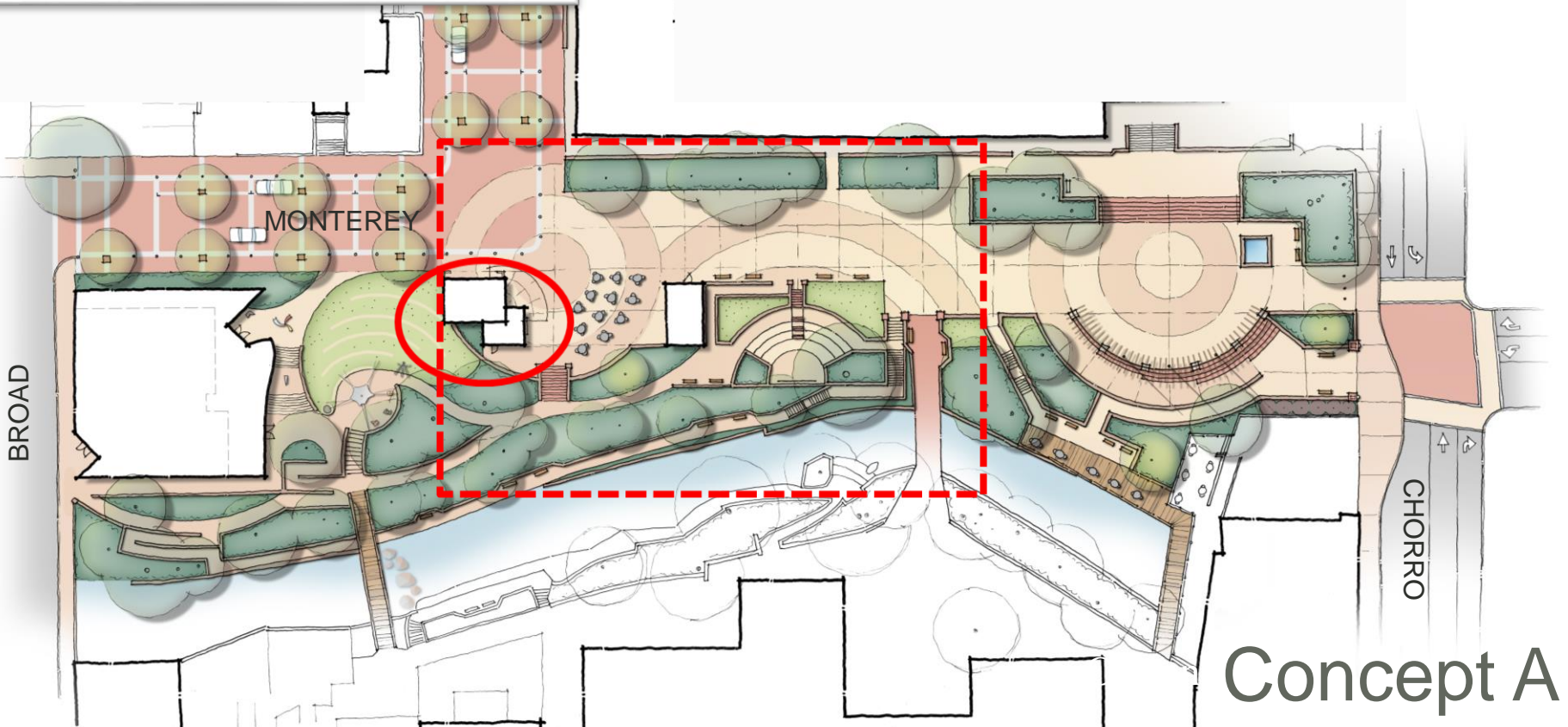
- Prominent pedestrian gateway
- Improved intersection on Chorro St.
- Expanded, level plaza
- Curved trellis
- Lower creek terrace
- **Potential new bridge connection**





FEATURES INCLUDE:

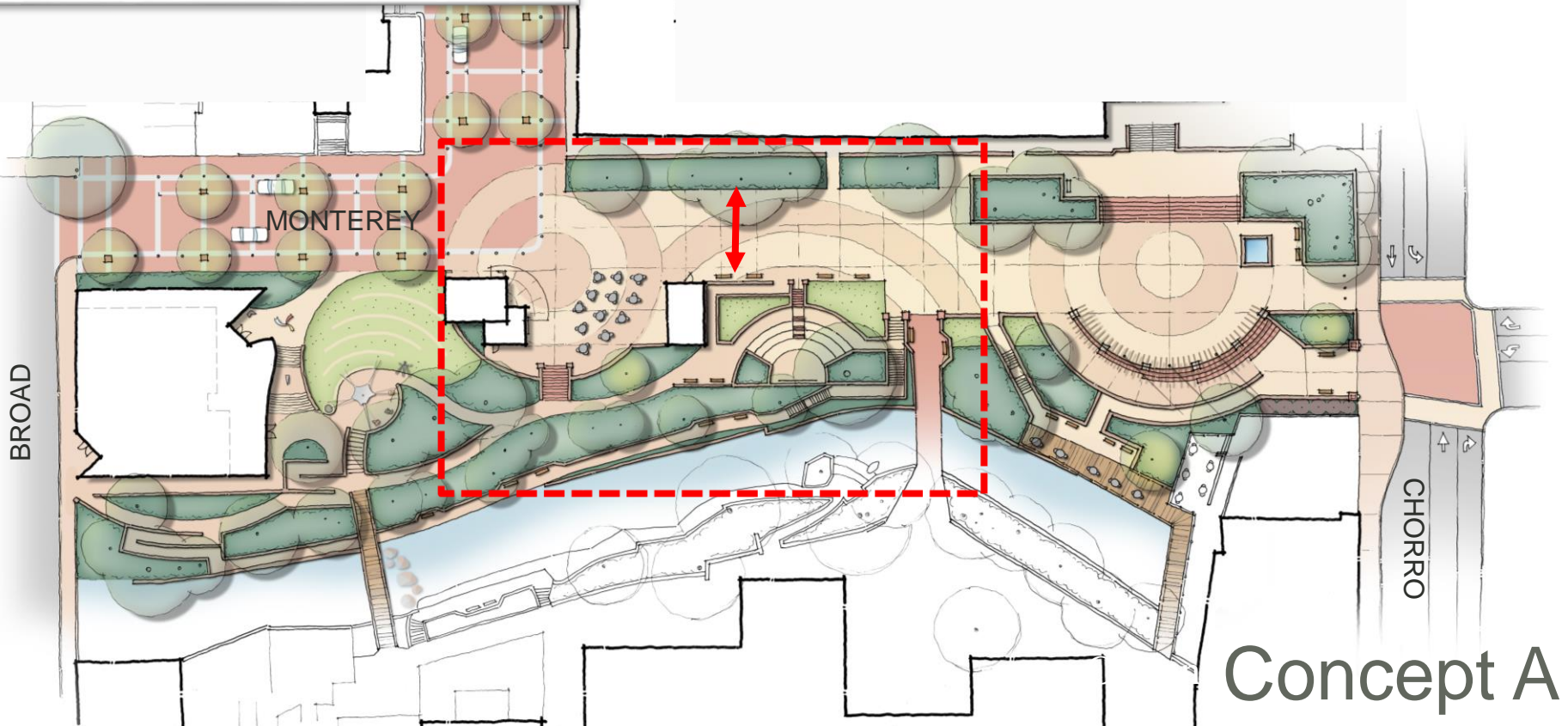
- Small café with restrooms
- Widened circulation route
- Accessibility upgrades to amphitheater
- Repurposed historic adobe
- New plaza/gathering area





FEATURES INCLUDE:

- Small café with restrooms
- **Widened circulation route**
- Accessibility upgrades to amphitheater
- Repurposed historic adobe
- New plaza/gathering area

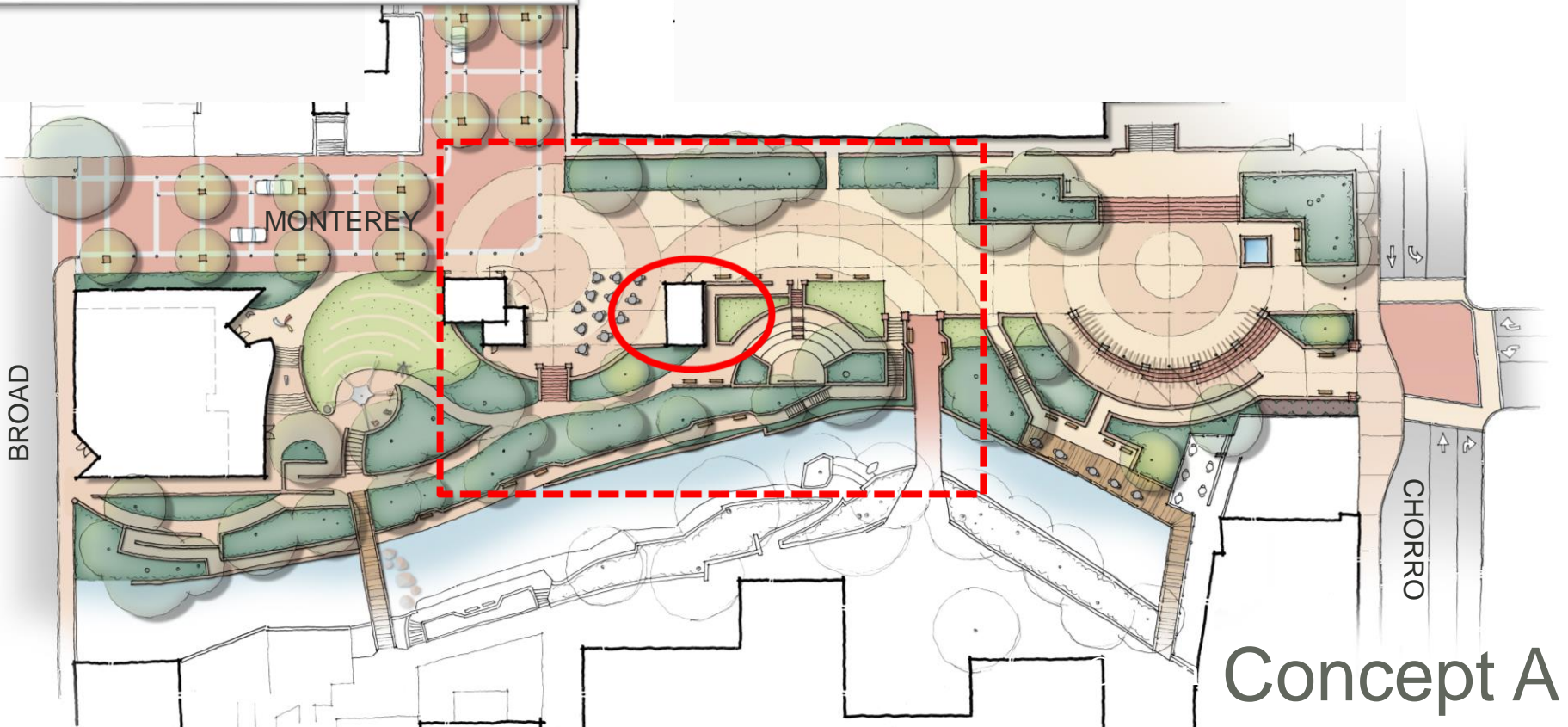


Concept A



FEATURES INCLUDE:

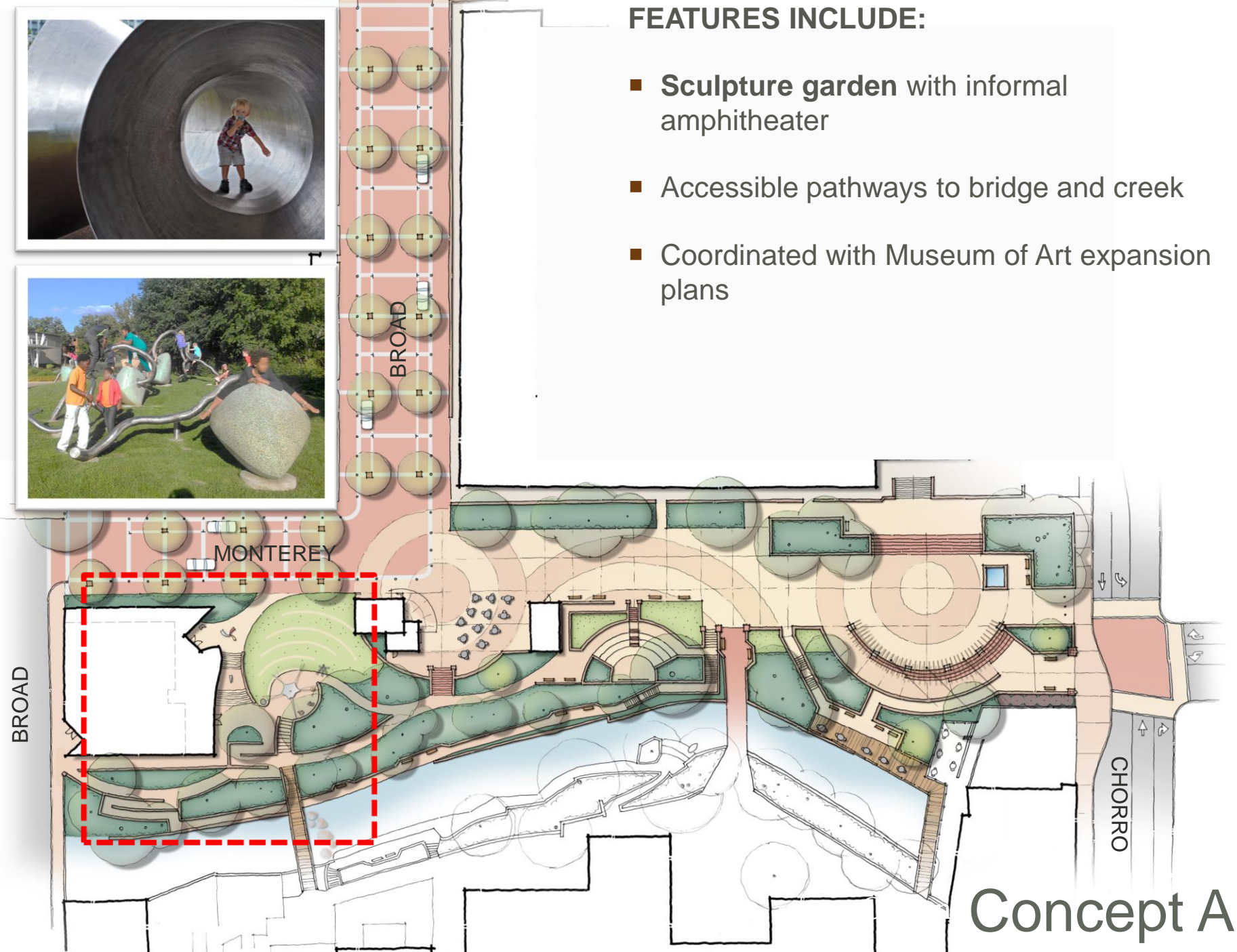
- Small café with restrooms
- Widened circulation route
- Accessibility upgrades to amphitheater
- Repurposed historic adobe
- New plaza/gathering area





FEATURES INCLUDE:

- **Sculpture garden** with informal amphitheater
- Accessible pathways to bridge and creek
- Coordinated with Museum of Art expansion plans

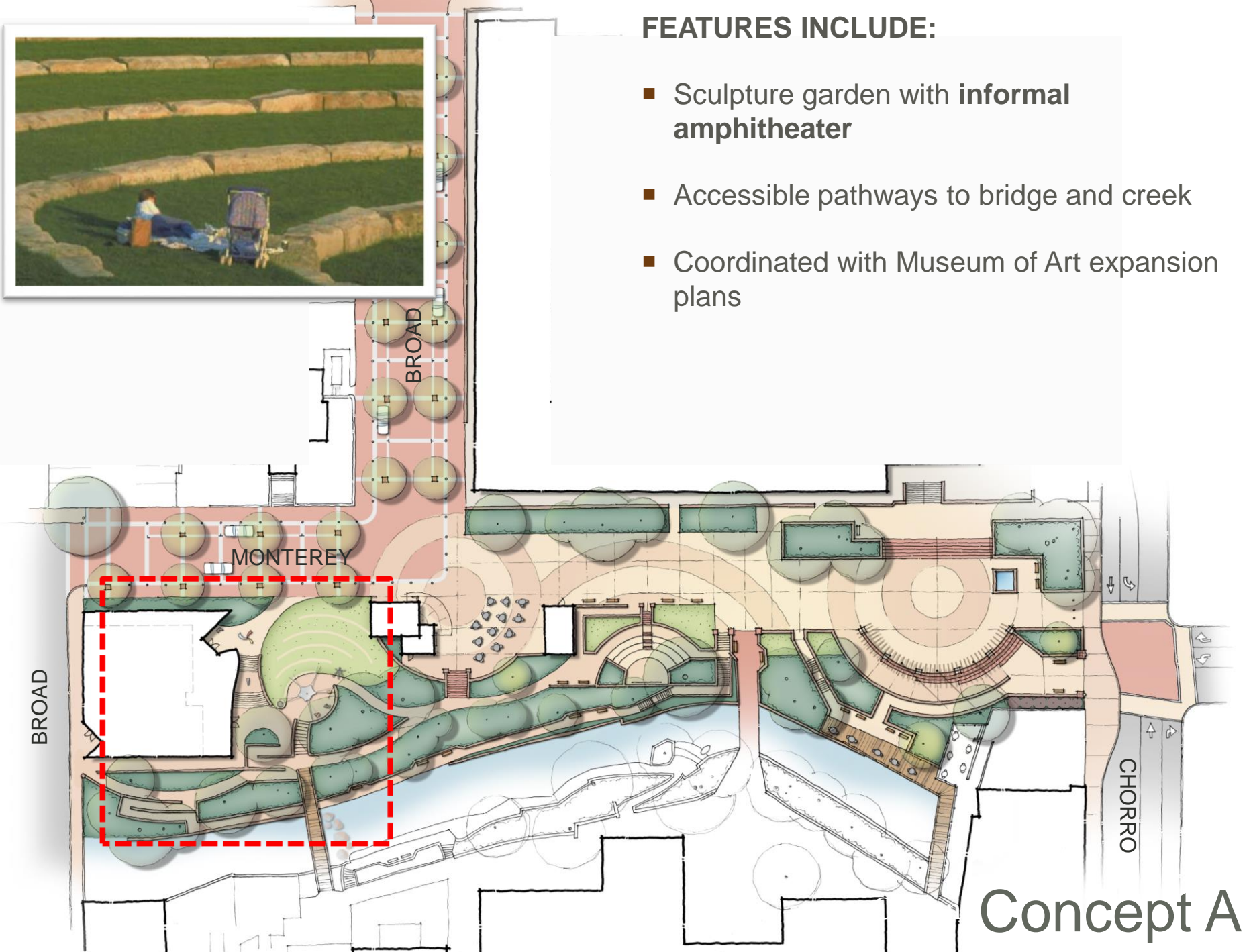


Concept A



FEATURES INCLUDE:

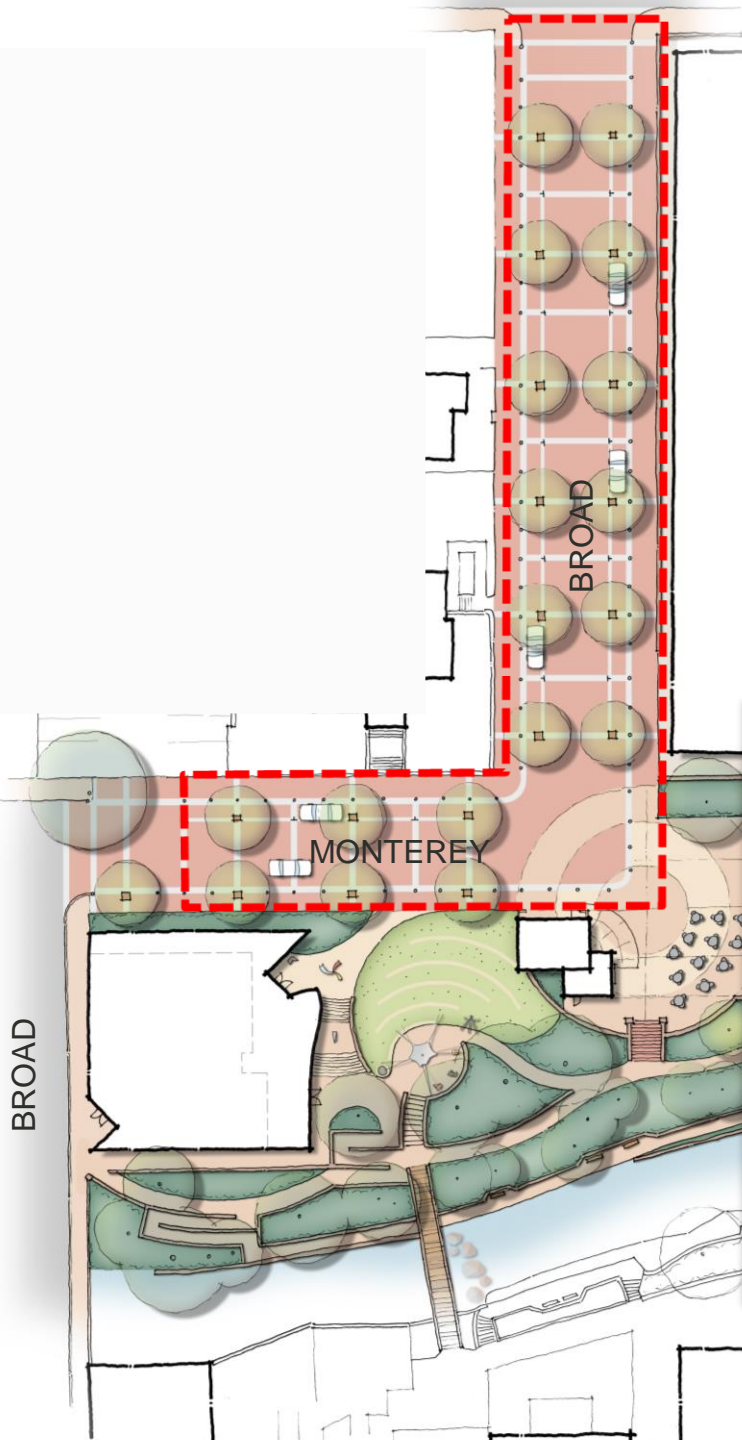
- Sculpture garden with **informal amphitheater**
- Accessible pathways to bridge and creek
- Coordinated with Museum of Art expansion plans



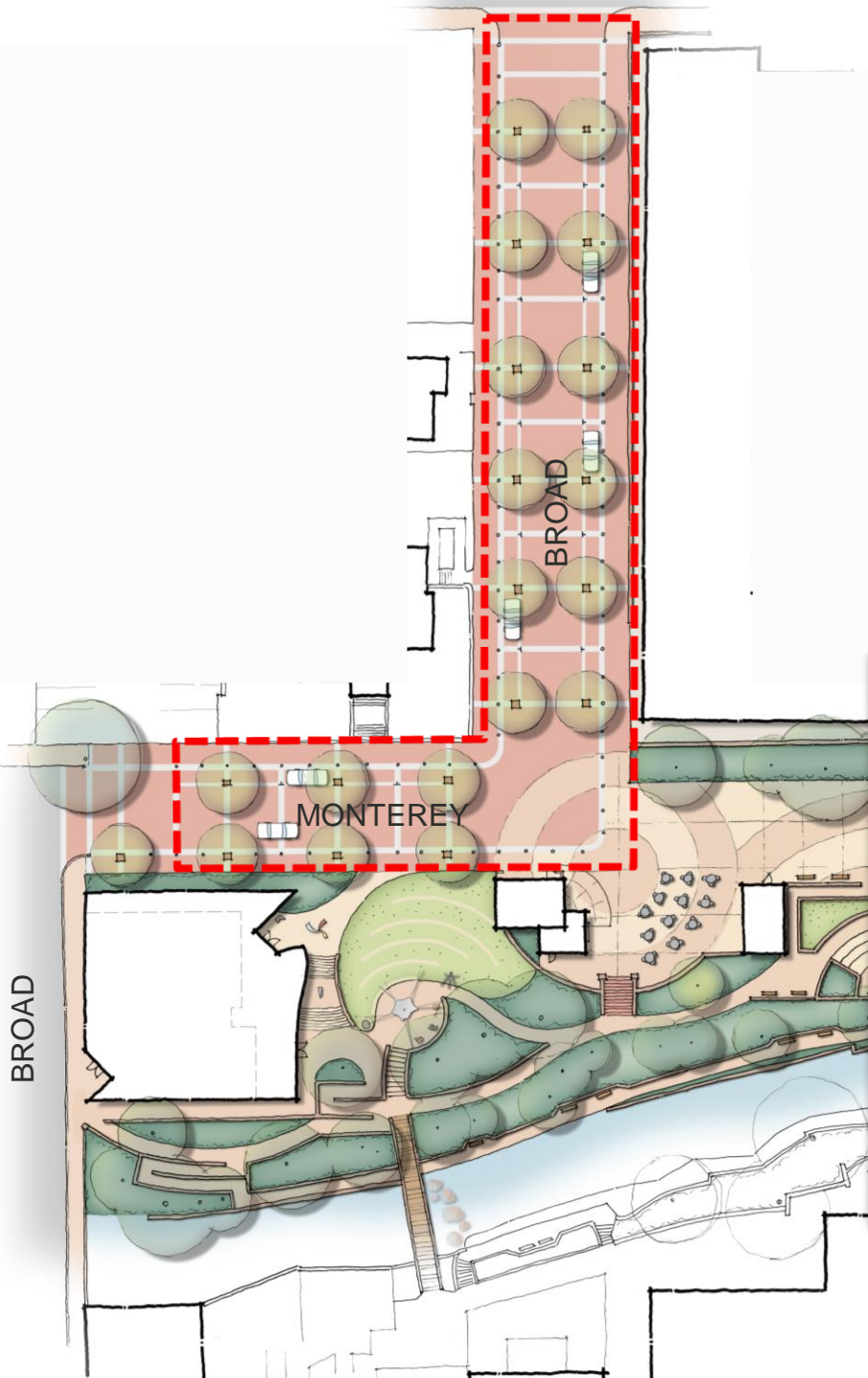
Concept A

The DOG-LEG:

- “Woonerf” – flexible street/plaza
- Circulation is unchanged from today
- Curbs are eliminated
- Attractive plaza expansion
- Traffic calming



Concept A



The DOG-LEG:

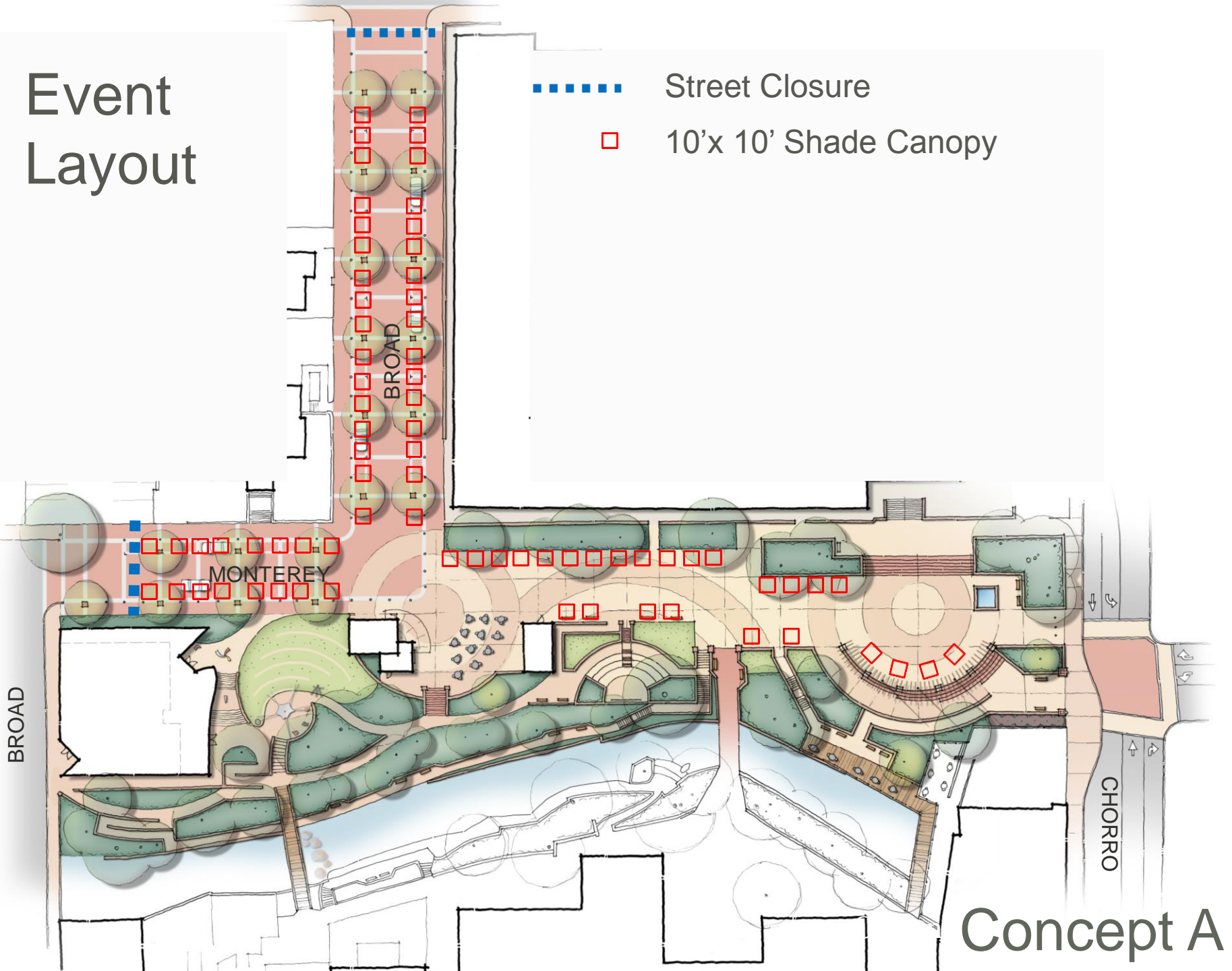
- “Woonerf” – flexible street/plaza
- Circulation is unchanged from today
- **Curbs are eliminated**
- Attractive plaza expansion
- Traffic calming



Concept A

Event Layout

- Street Closure
- 10'x 10' Shade Canopy



Concept A

Potential Stage Locations



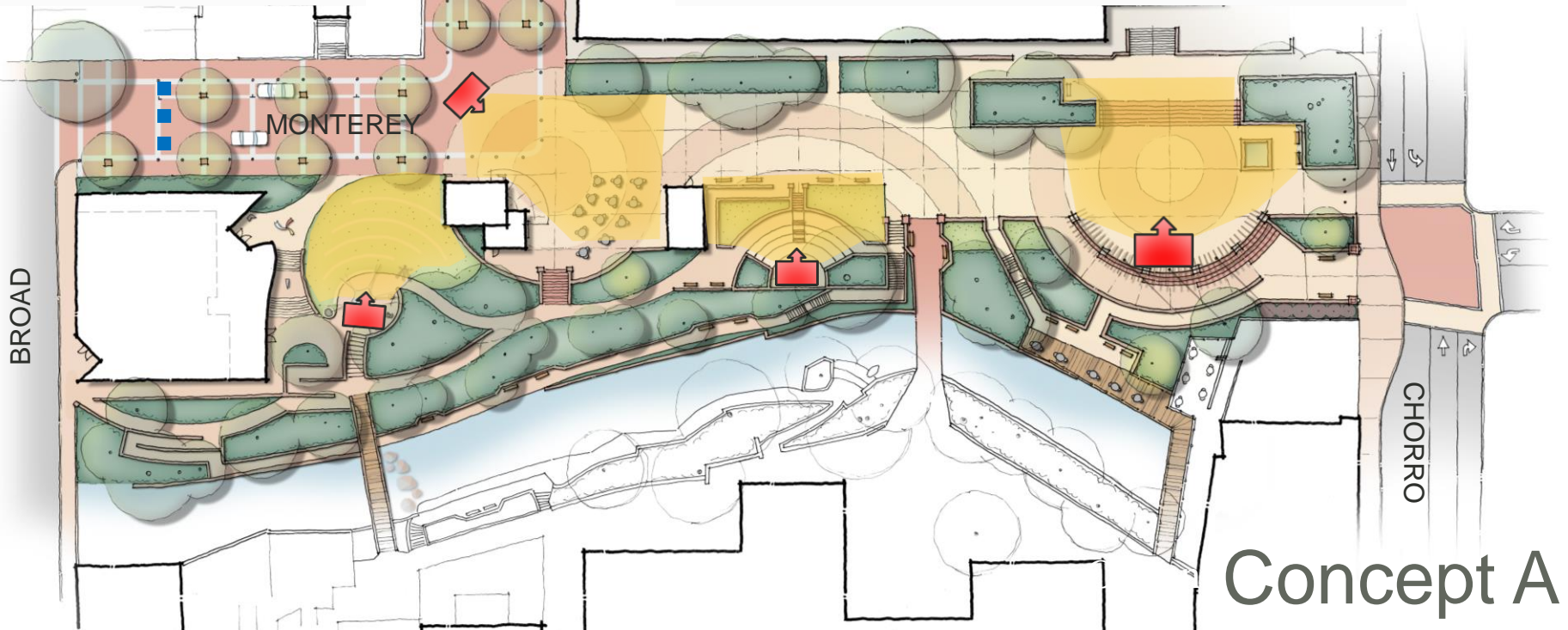
Potential Stage Location



Audience Viewing Area



Street Closure





Carousel

Christmas
Tree

Santa's
House

MONTEREY

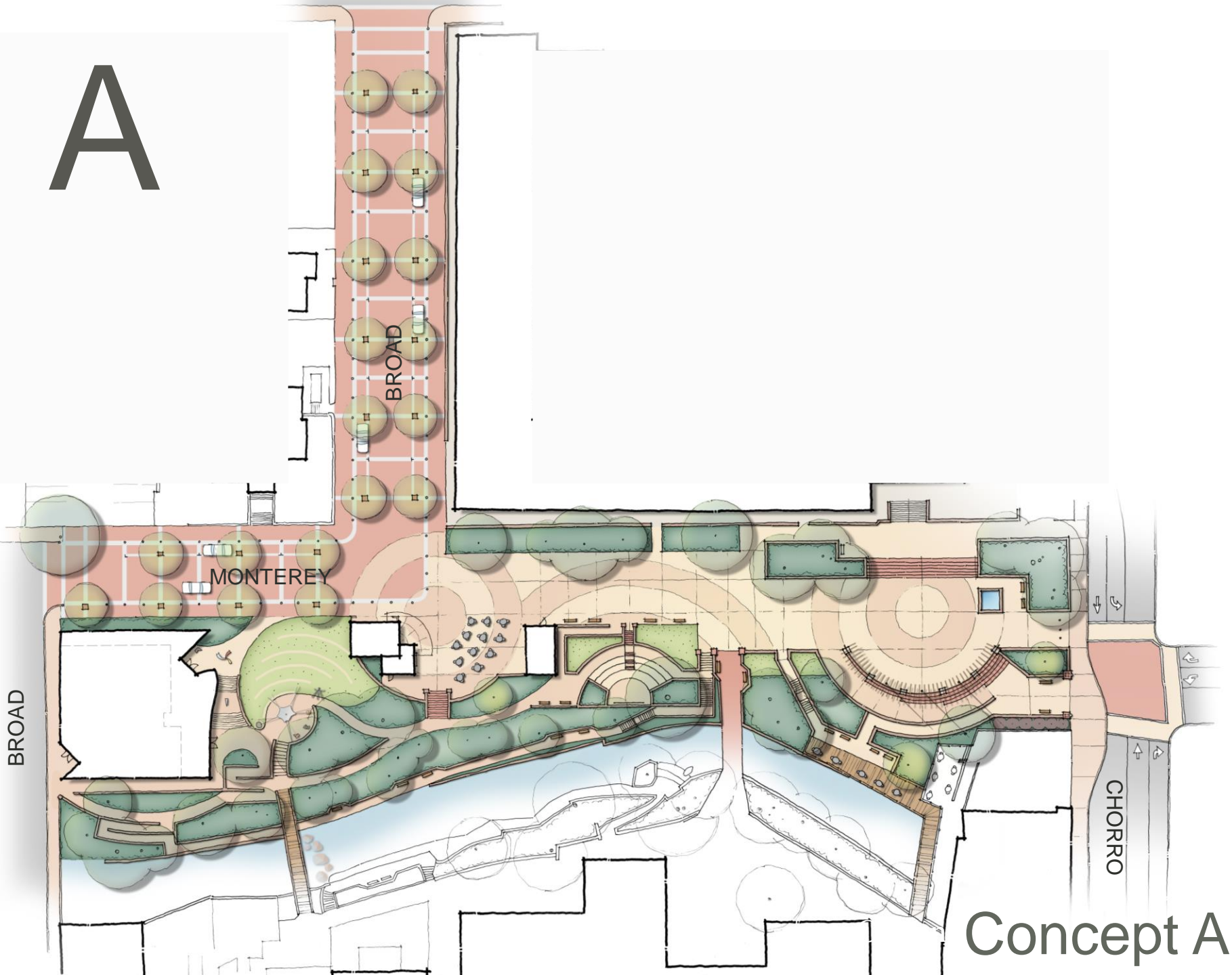
BROAD

BROAD

CHORRO

Concept A

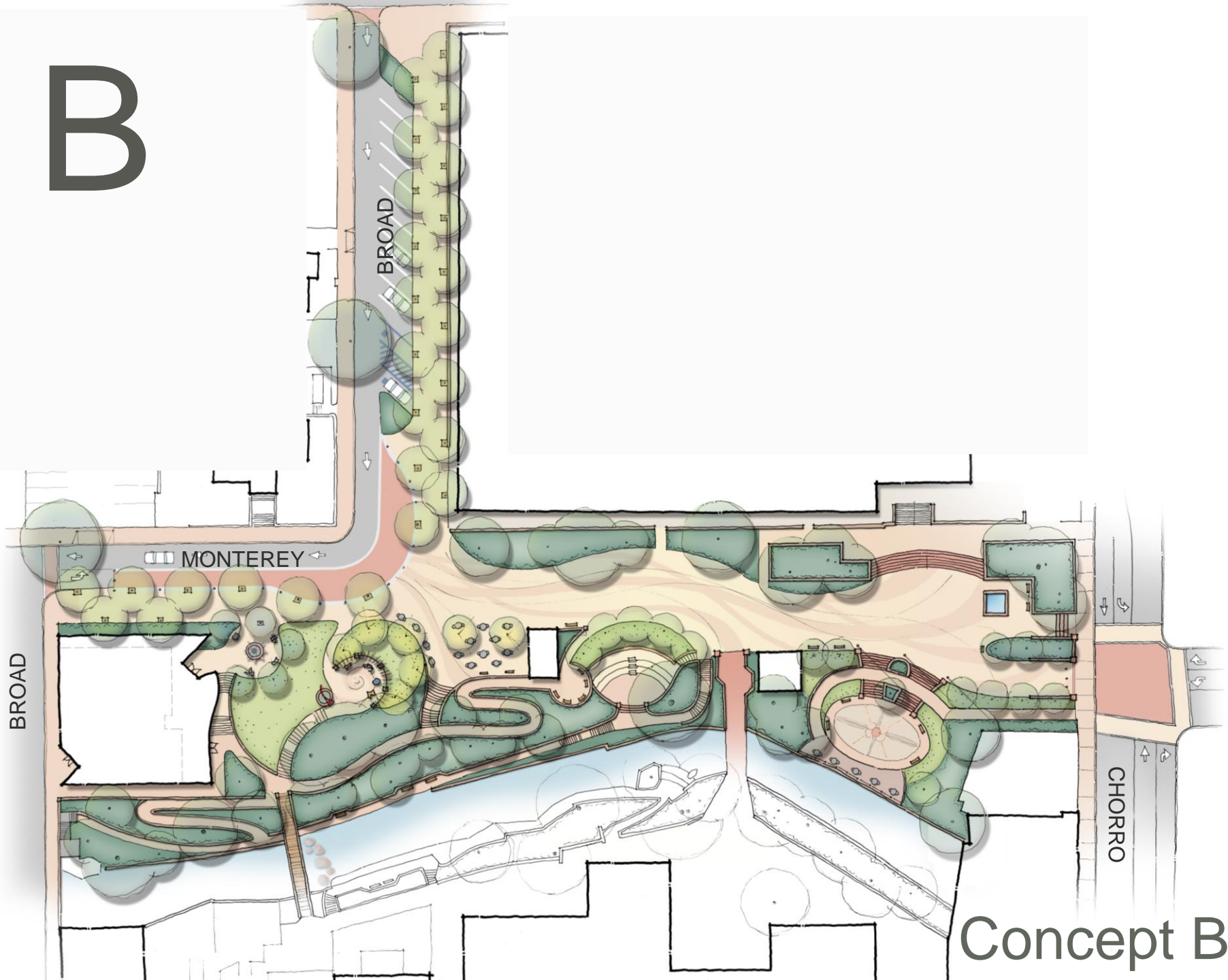
A



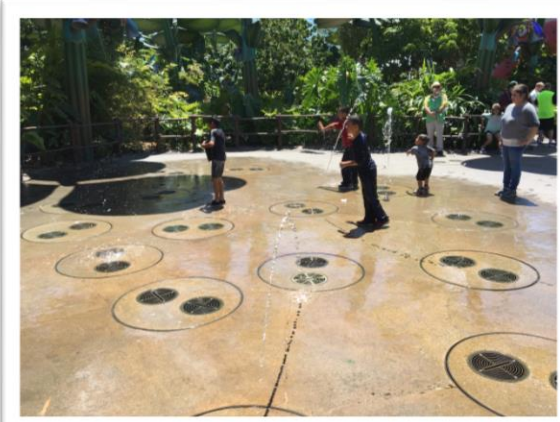
CHORRO

Concept A

B



Concept B



FEATURES INCLUDE:

- Prominent pedestrian gateway
- Sunken creek-side patio
- **In-grade splash pad**
- New restrooms
- Flowing circulation pattern

BROAD

BROAD

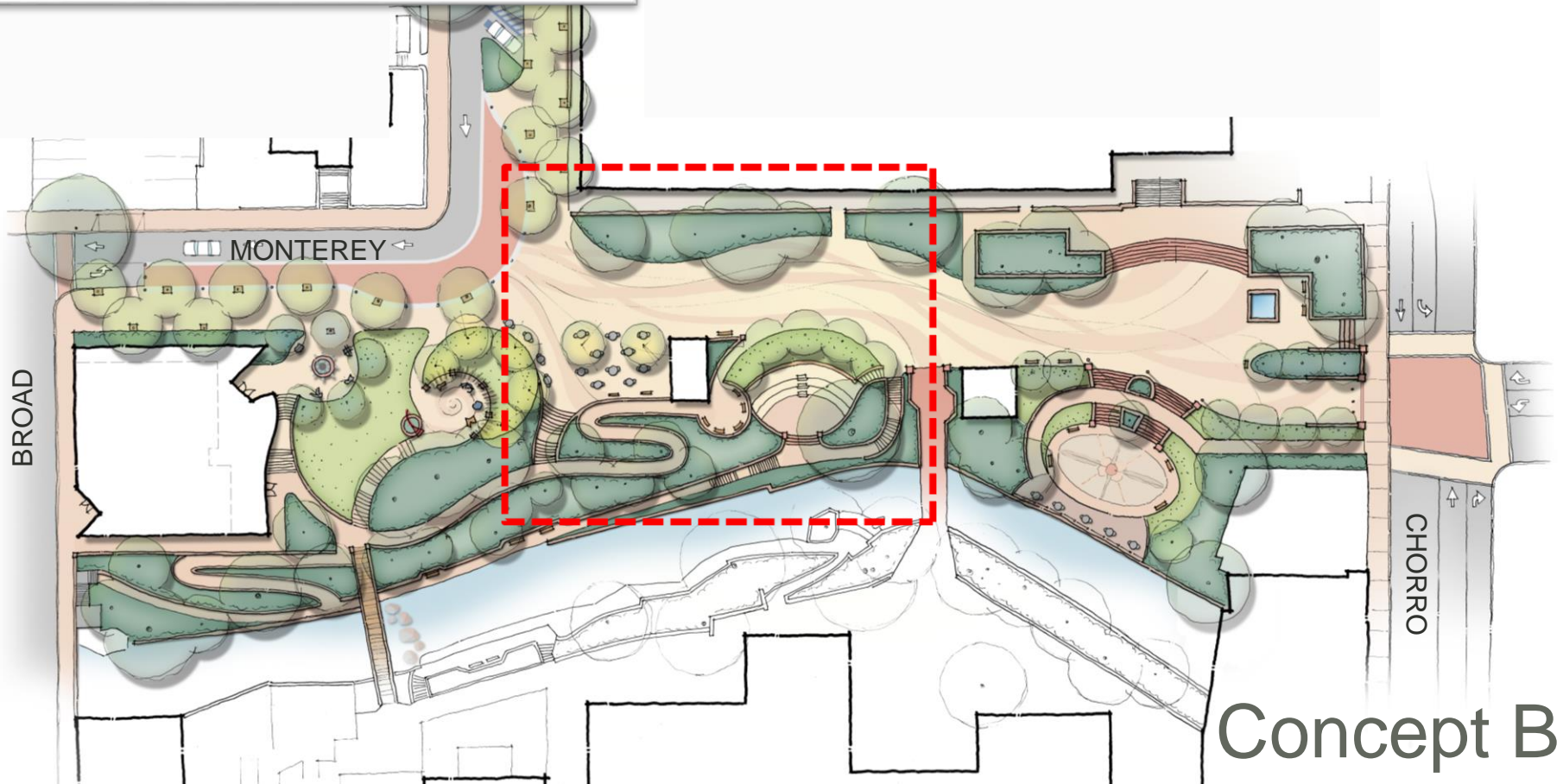
CHORRO

Concept B



FEATURES INCLUDE:

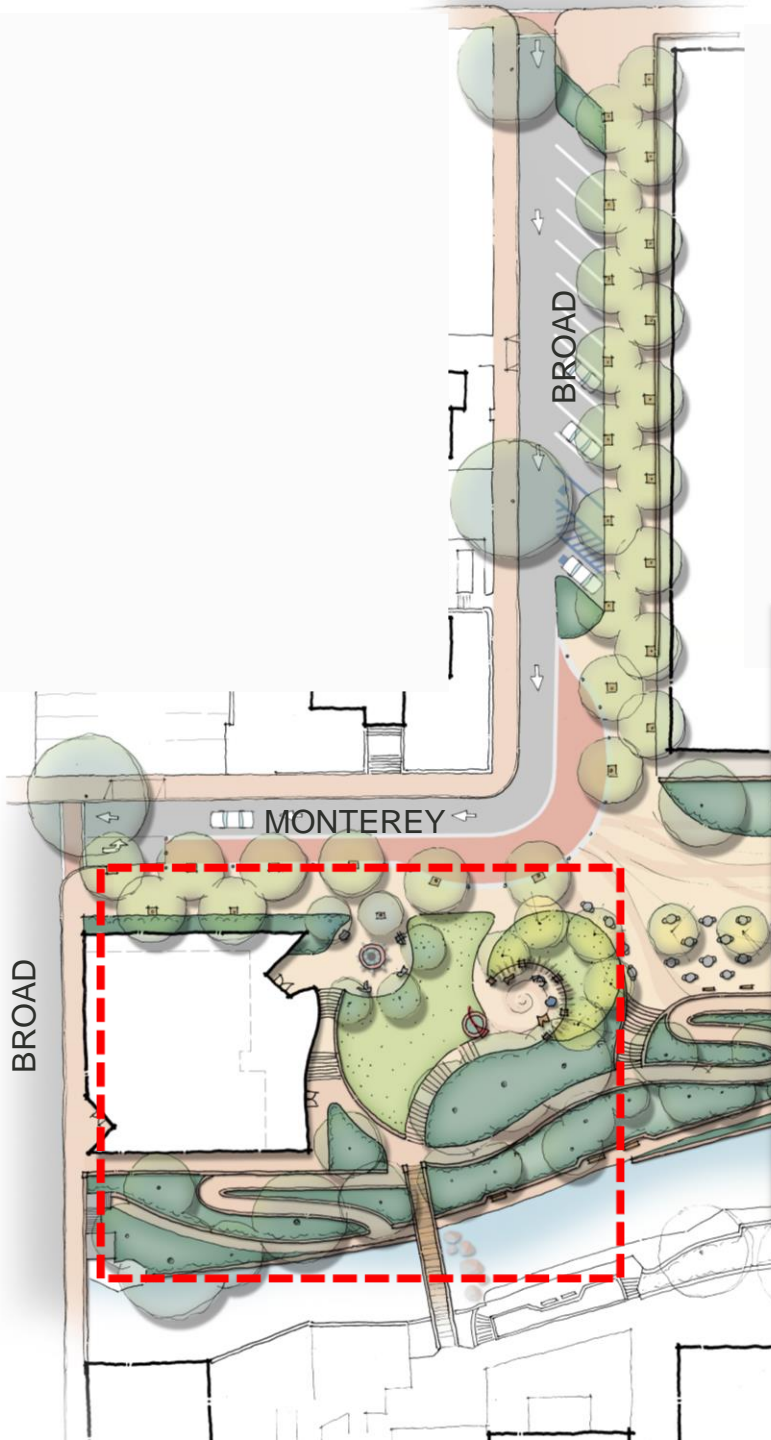
- New plaza/gathering area
- Widened, curvilinear circulation route
- Enhanced amphitheater
- Repurposed historic adobe



Concept B

FEATURES INCLUDE:

- Sculpture garden & natural play features
- Accessible pathways to bridge and creek
- Coordinated with Museum of Art expansion plans

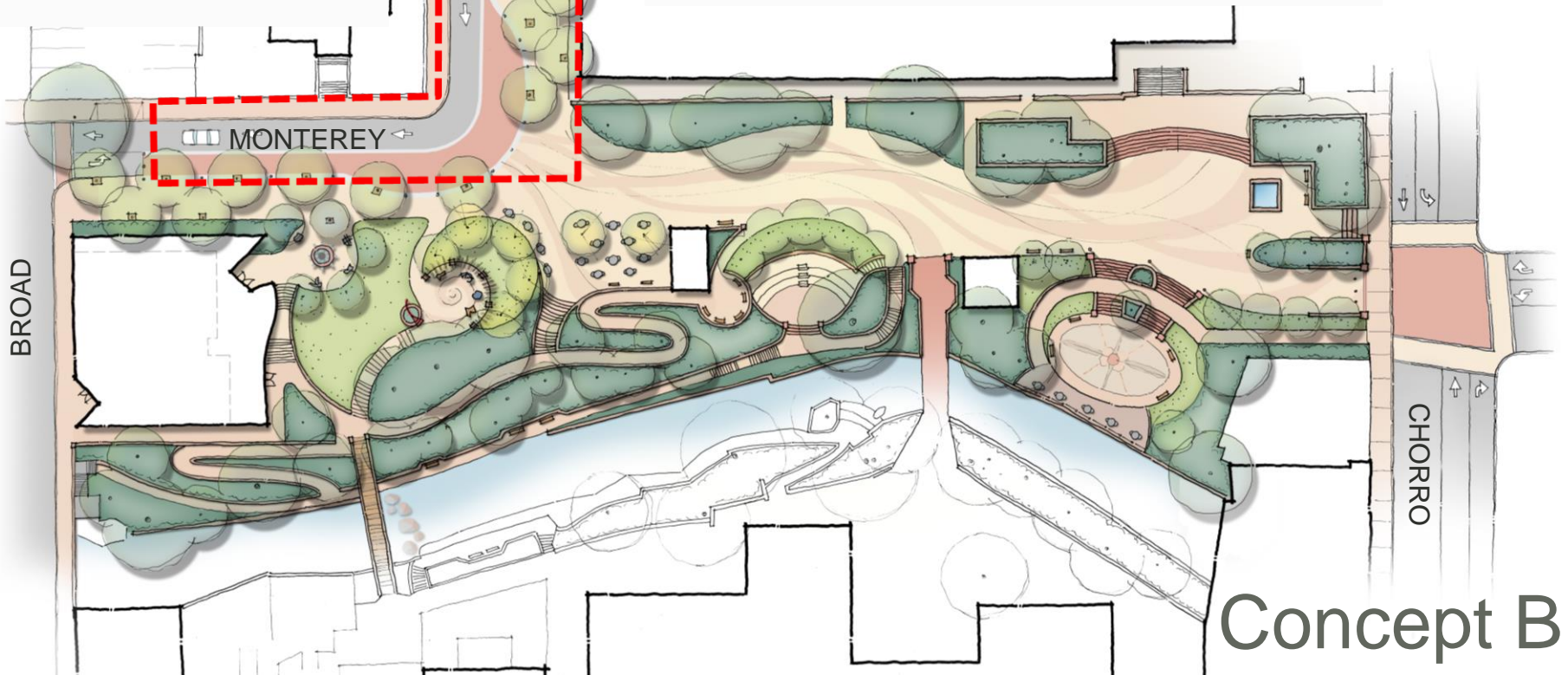


RO
Concept B



The DOG-LEG:

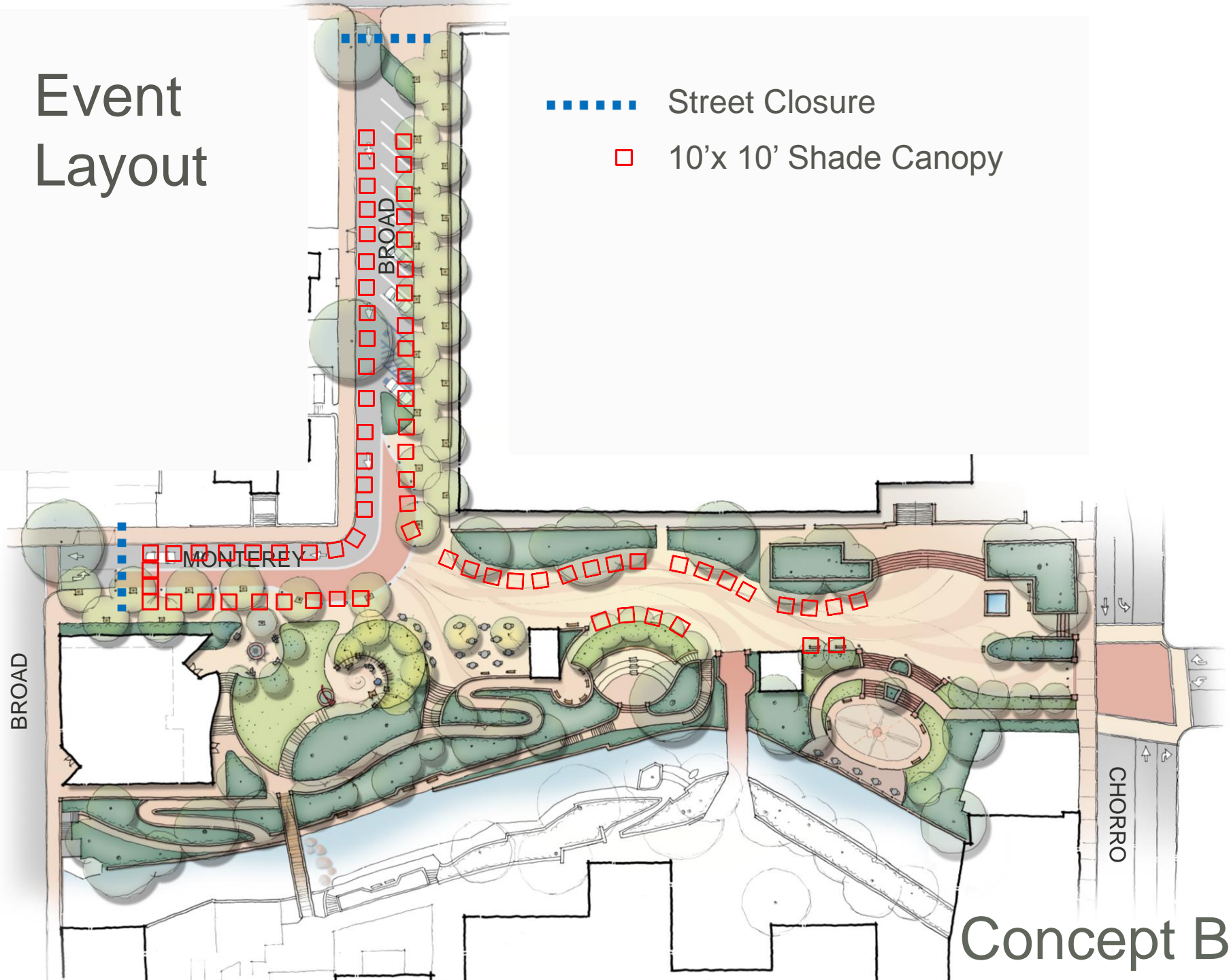
- Convert to one-way with angled parking
- Passenger loading area
- Remove curbs adjacent to plaza
- More generous sidewalk widths



Concept B

Event Layout

- Street Closure
- 10'x 10' Shade Canopy



Concept B

Potential Stage Locations



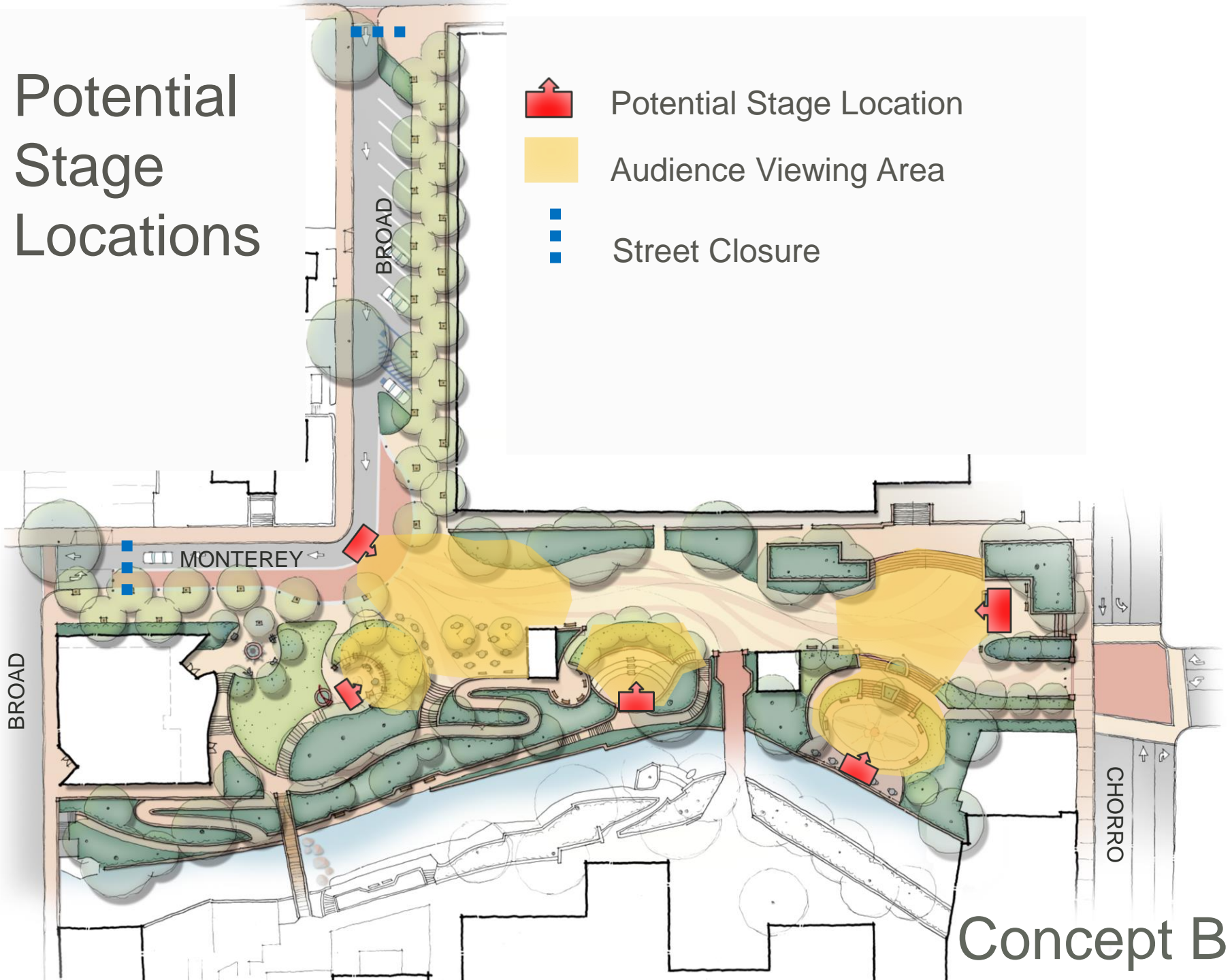
Potential Stage Location



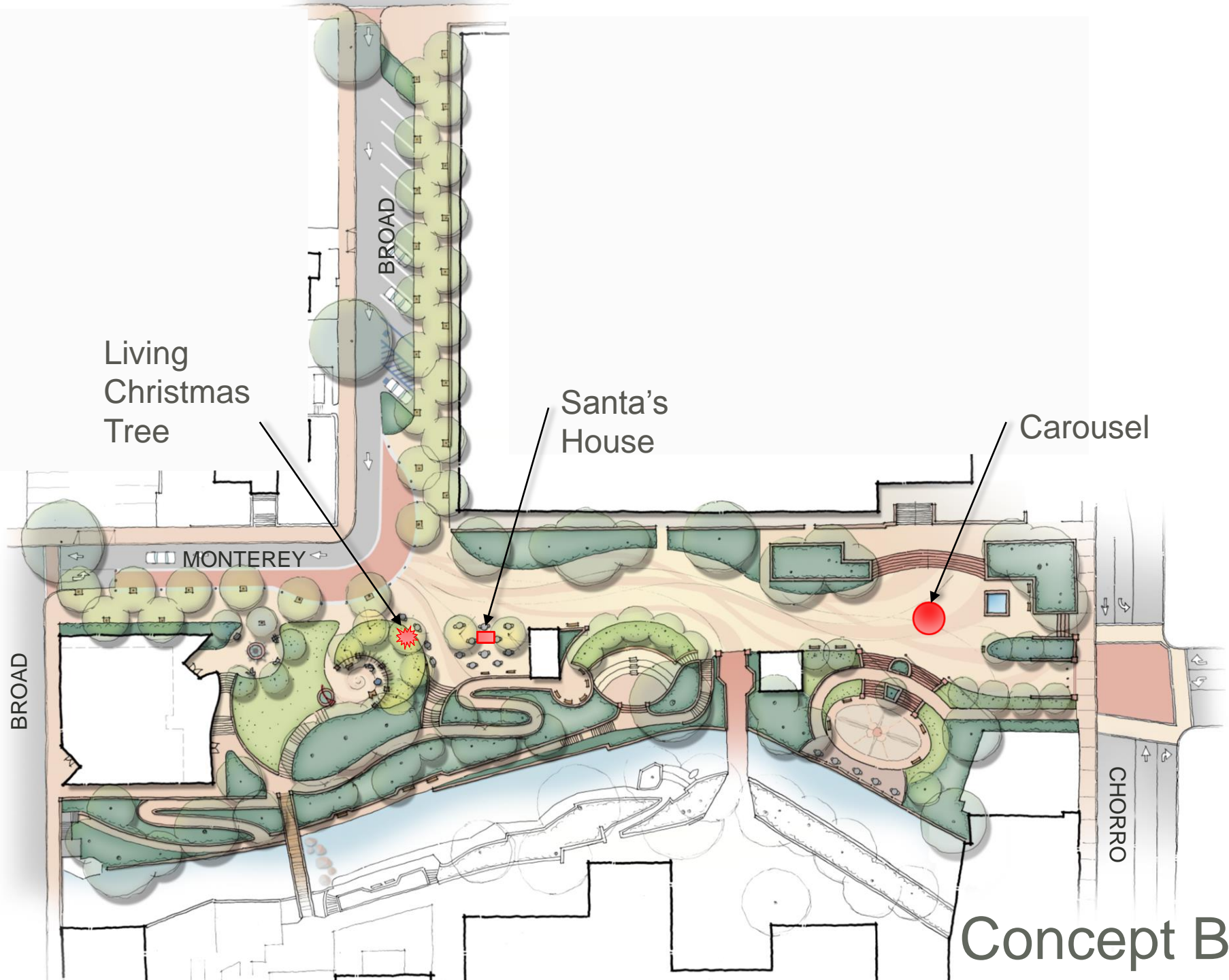
Audience Viewing Area



Street Closure



Concept B



Living
Christmas
Tree

Santa's
House

Carousel

BROAD

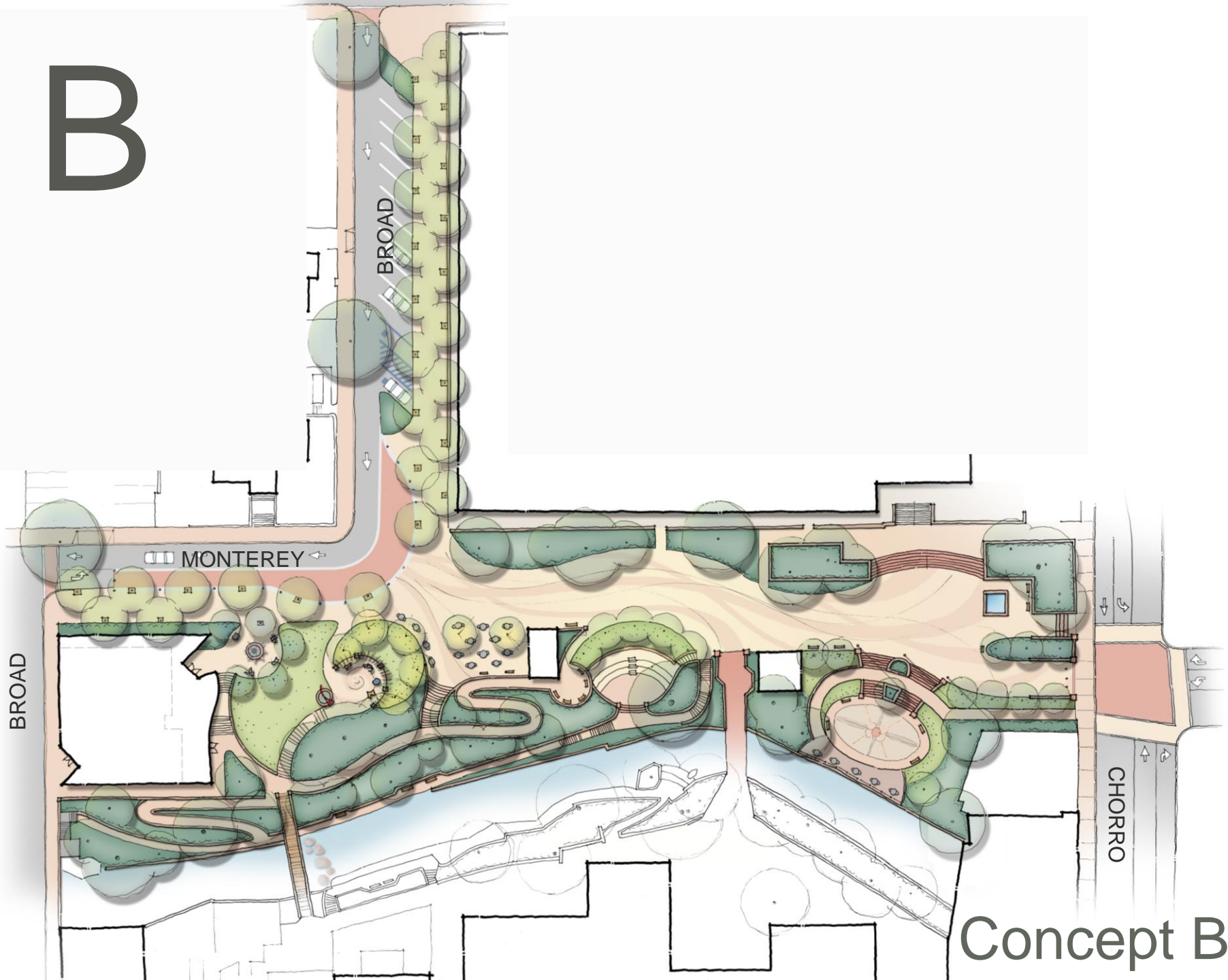
MONTEREY

BROAD

CHORRO

Concept B

B



Concept B

Design Alternatives

Primary Differences

- Overall design style
- Broad Street dog-leg
- Restroom location
- Café
- Expanded or Enhanced Main Plaza

