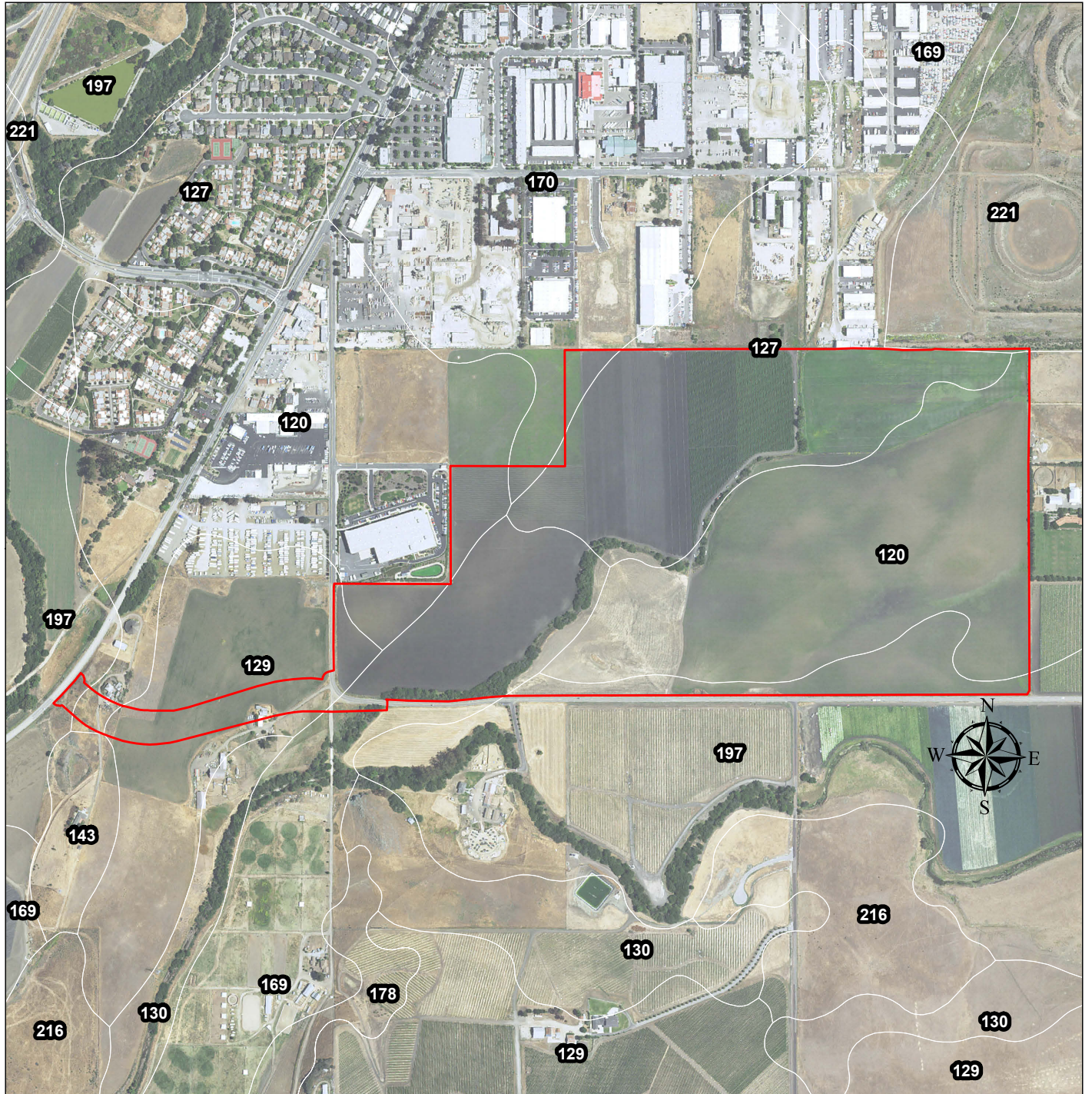



Figure 5. USDA Soils Map



 Study Area

0 500 1,000 2,000 3,000 Feet

120: Concepcion loam, 2 to 5 percent slopes
 127: Cropley clay, 0 to 2 percent slopes
 129: Diablo clay, 5 to 9 percent slopes

169: Marimel sandy clay loam, occasionally flooded
 170: Marimel silty clay loam, drained
 197: Salinas silty clay loam, 0 to 2 percent slopes
 221: Xererts-Xerolls-Urban land complex, 0 to 15 percent slopes

Figure 6. National Wetlands Inventory

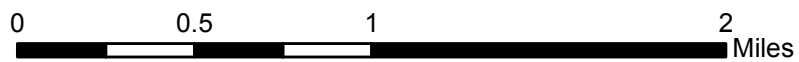
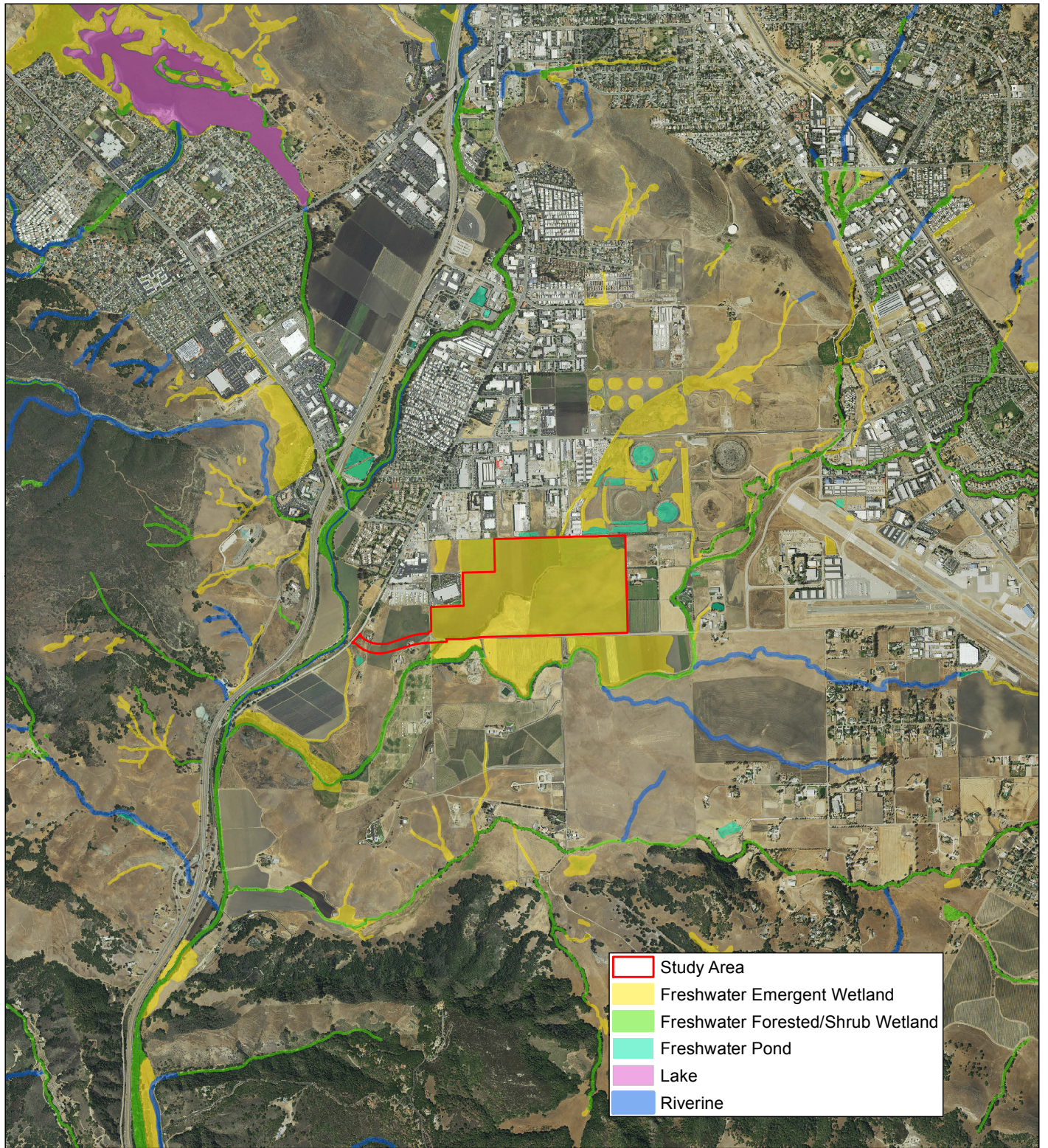


Figure 7. FEMA/FIRM Map

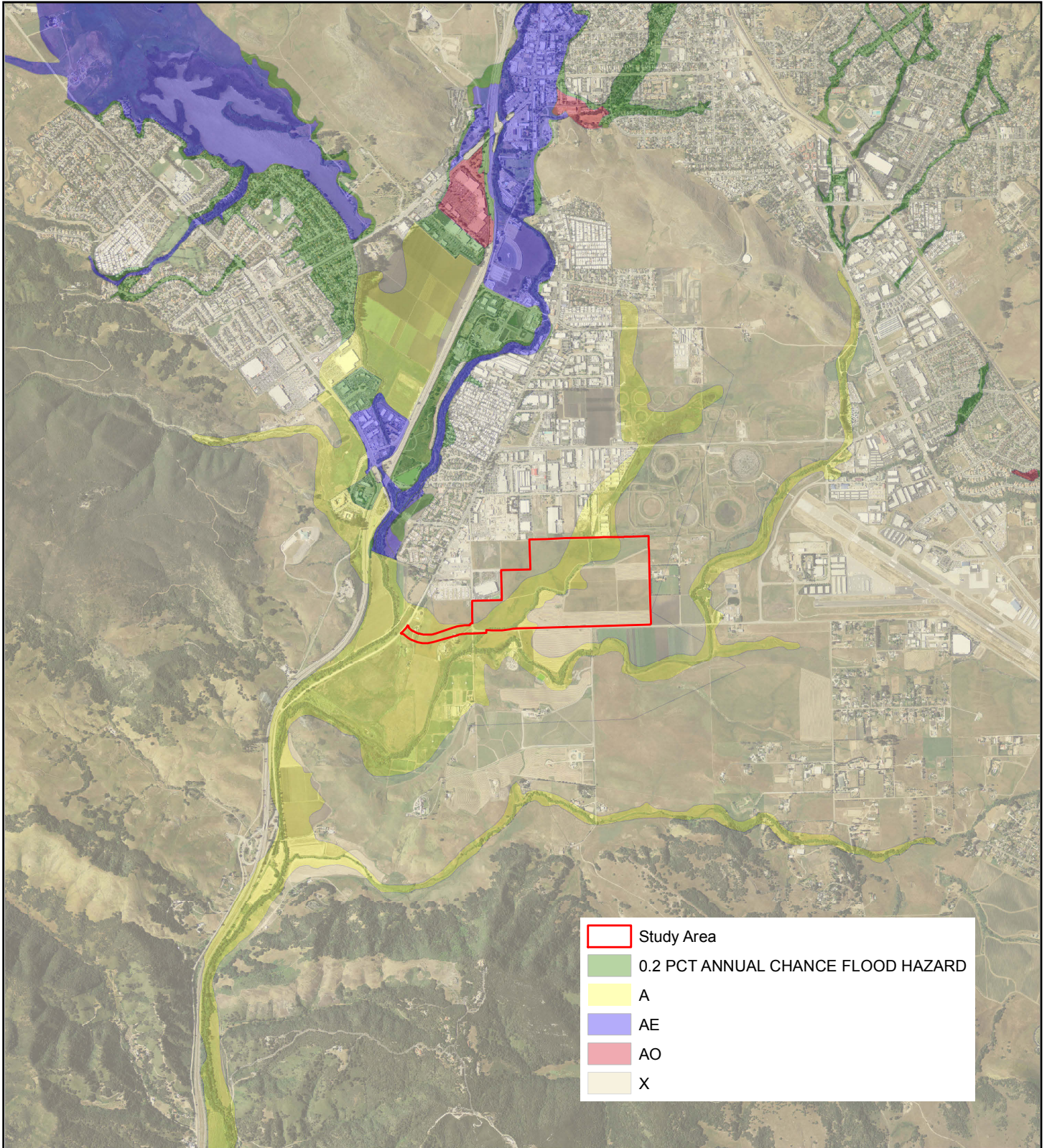


Figure 8. Aerial Imagery History

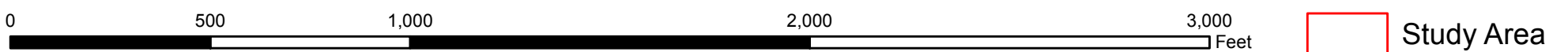
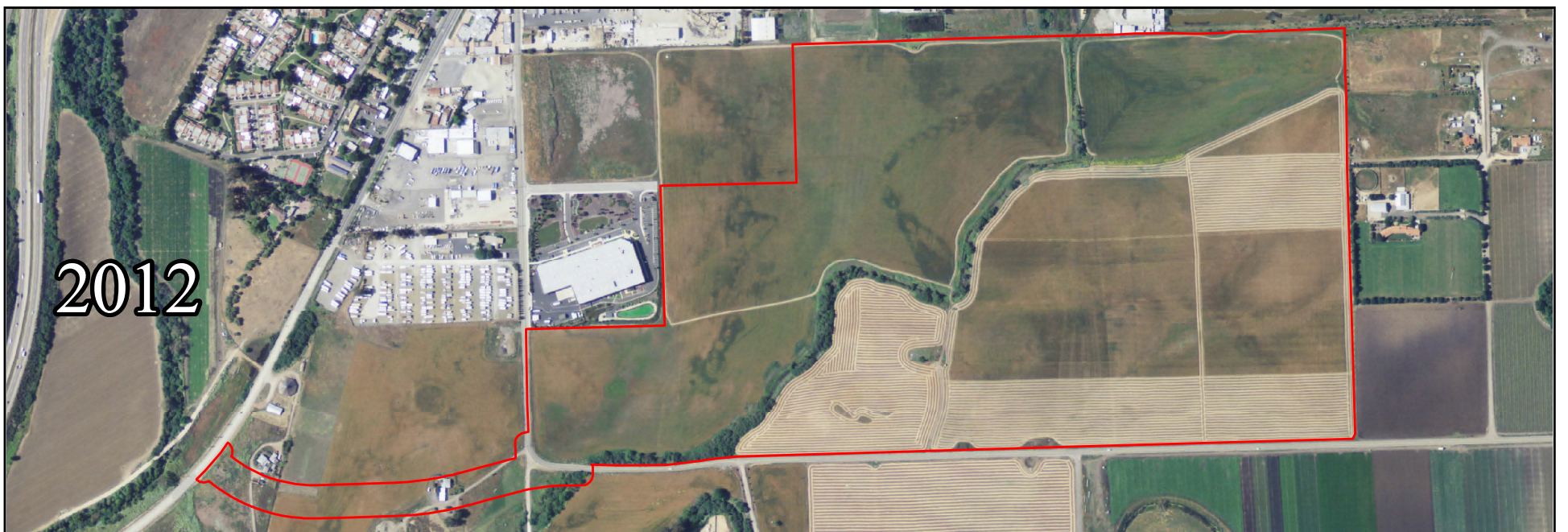
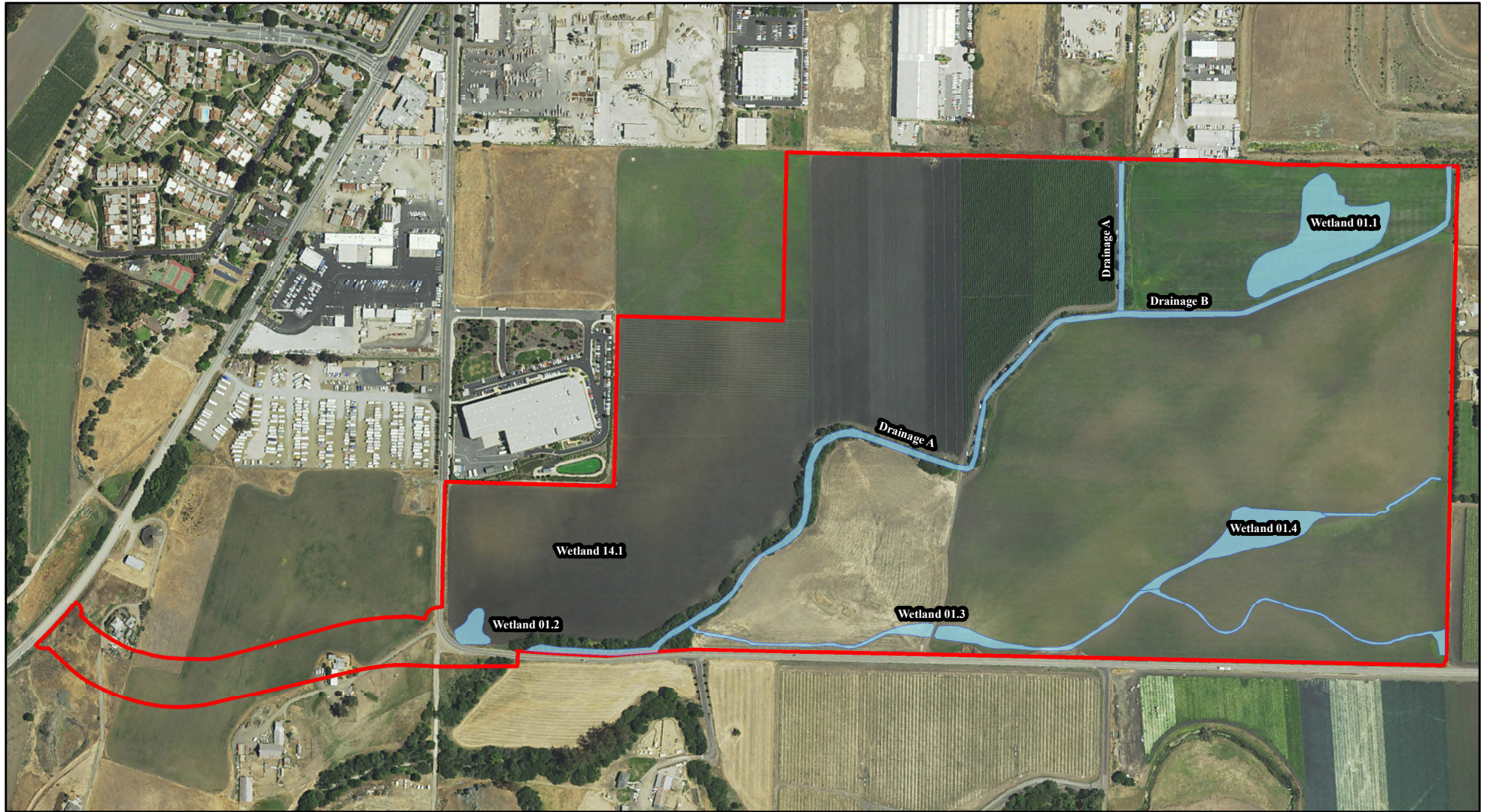




Figure 9. Previous Delineation



 Study Area  2001 Potential Federal Jurisdiction

0 500 1,000 2,000 Feet



7.0 References

- 33 CFR 320-332. U.S. Army Corps of Engineers Regulatory Program Regulations. (Current through 2/17/2011). Text from Code of Federal Regulations. Available from: <http://ecfr.gpoaccess.gov>. Accessed 21 February 2011.
- 40 CFR 230. Guidelines for specification of disposal sites for dredged or fill material. (Current through 2/17/2011). Text from Code of Federal Regulations. Available from: <http://ecfr.gpoaccess.gov>. Accessed 21 February 2011.
- California Department of Fish and Game. 2014. Fish and Game Code Section 1600-1616. Available online at <http://www.leginfo.ca.gov>. Accessed September 4, 2014.
- California Public Resource Code § 30121. http://www.coastal.ca.gov/la/wetland_def.html.
- California Water Code § 13050(e). <http://www.leginfo.ca.gov>
- Cannon. 2015. Draft Drainage Report; Avila Ranch, Tentative Tract Map. Prepared for Avila Ranch, LLC. San Luis Obispo. December 17.
- Cowardin, L. M., V. Carter, F. C. Golet, and E. T. LaRoe. 1979. Classification of wetlands and deepwater habitats of the United States. U.S. Department of the Interior, Fish and Wildlife Service, Washington, D.C.
- Federal Emergency Management Agency (FEMA). 2005. Flood Insurance Rate Map, Santa Barbara County, California; Panels 1235 and 1230, Map number 06083C. Available from <http://msc.fema.gov/>.
- Hickman, James C. 1993. The Jepson Manual. University of California Press, Berkeley and Los Angeles, California.
- McDaniel, Paul, ed. 2011. The Twelve Soil Orders: Soil Taxonomy. University of Idaho, Moscow, Soil and Land Resources Division. Available online at <http://soils.cals.uidaho.edu/soilorders/index.htm>.]
- Munsell Soil Color Charts. 2000 (Revised Edition). Washable Edition.
- Olberding Environmental, Inc. 2002. Location of areas potentially subject to U.S. Army Corps of Engineers Jurisdiction: Wetland/U.S. Waters Delineation for the Avila Ranch Property. San Luis Obispo. February.
- Rosatti, T.J. ed. 2008. Jepson Flora Project, Index to California Plant Names. Updated September 5, 2006. Online at <http://ucjeps.berkeley.edu/db/icpn/>.
- State of California. 2010. Porter-Cologne Water Quality Control Act. With Additions and Amendments Effective January 1, 2010. California Water Code, Division 7. Water Quality. Effective January 1, 2010. Available online at http://www.swrcb.ca.gov/laws_regulations/docs/portercologne.pdf
- State Water Resources Control Board. 2001. State Regulation Of “Isolated” Waters. Memorandum. Available online at http://www.swrcb.ca.gov/water_issues/programs/cwa401/docs/stateregulation_isolatedwaters.pdf

- U.S. Army Corps of Engineers (USACE). 1987. Corps of Engineers Wetlands Delineation Manual. Technical Report Y-87-1. Environmental Laboratory. Vicksburg, MS: U.S. Army Engineer Waterways Experiment Station.
- _____. 2003. Interim Guidance concerning waters of the U.S. in light of SWANCC (App A of Advance Notice of Proposed Rulemaking on CWA definition of waters of the U.S., published in 68 Fed. Reg. 1995. Jan 15. [Accessed October 2009] Online at <http://www.spn.usace.army.mil/regulatory/>.
- _____. 2005. Regulatory Guidance Letter 05-05: Ordinary High Water Mark Identification. December 7.
- _____. 2008a. A Field Guide to the Identification of the Ordinary High Water Mark (OHWM) in the Arid West Region of the Western United States. Ed. R.W. Lichvar and S.M. McColley. ERDC/CRREL TR-08-12. Hanover, NH: U.S. Army Engineer Research and Development Center.
- _____. 2008b. A Regional supplement to the Corps of Engineers Wetland Delineation Manual: Arid West Region (Version 2.0). Ed. J.S. Wakeley, R.W. Lichvar, and C.V. Noble. ERDC/EL TR-08-28. Vicksburg, MS: U.S. Army Engineer Research and Development Center.
- _____. 2010. Updated Datasheet for the Identification of the Ordinary High Water Mark (OHWM) in the Arid West Region of the United States. Ed. K.E. Curtis and R.W. Lichvar. ERDC/CRREL TN-10-1. Hanover, NH: U.S. Army Engineer Research and Development Center.
- U.S. Department of Agriculture (USDA), Farm Service Agency, Aerial Photography Field Office. 2014. Aerial Photomosaic of Santa Barbara County. Available online through <http://gis.apfo.usda.gov/arcgis/services>. Farm Service Agency, Aerial Photography Field Office, National Agriculture Imagery Program (NAIP) U.S. Department of Agriculture, (USDA).
- U.S. Department of Agriculture (USDA), National Cooperative Soil Survey (NCSS). 1973. Soil Survey of Santa Barbara County, California, South Coastal Part.
- U.S. Department of Agriculture (USDA), Natural Resources Conservation Service (NRCS). 1998. Keys to Soil Taxonomy, Eighth Edition, 1998.
- _____. 2008. SSURGO Data for Santa Barbara County, California, South Coastal Part. Version 4. USDA, NRCS, National Cooperative Soil Survey (NCSS).
- _____. 2010. Field Indicators of Hydric Soils in the United States. Version 7.0. G.W. Hurt and L.M. Vasilas (eds.). USDA, NRCS in cooperation with the National Technical Committee for Hydric Soils (NTCHS).
- U.S. Department of Agriculture (USDA), Soil Survey Staff, Natural Resources Conservation Service. 2014. Available online at <http://websoilsurvey.nrcs.usda.gov>. Accessed 10/15/2014.
- U.S. Environmental Protection Agency (USEPA) and U.S. Army Corps of Engineers (USACE). 2008. Clean Water Act Jurisdiction Following the U.S. Supreme Court's Decision in *Rapanos v. United States & Carabell v. United States*.

Western Regional Climate Center. 2015. Monthly Total Precipitation (inches) for Arroyo Grande California RAWS Station, NWS RAWS Station 044915. <http://www.raws.dri.edu/cgi-bin/rawMAIN.pl?caCCAR>. Accessed December 29, 2015.