

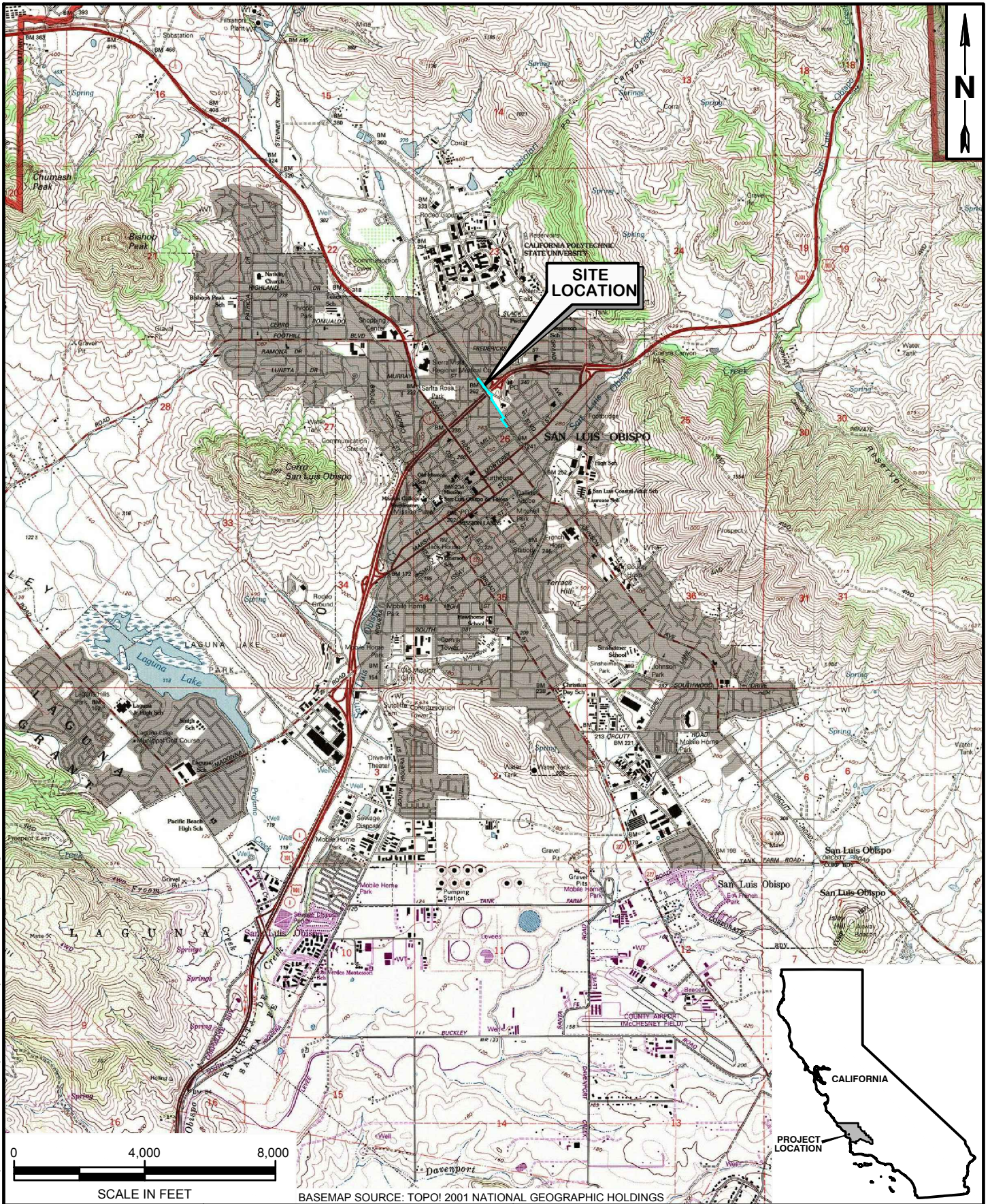
# **ATTACHMENTS**

---

# **ATTACHMENT 1**

---

## **Figure 1 – Site Location Map**



Z:\Current\Projects\1502-2212 City SLO PW - Railroad Safety Trail\Graphics\City SLO Railroad Safety Trail.dwg, 11/10/2016 9:20:16 AM

**padre**  
 associates, inc.  
 ENGINEERS, GEOLOGISTS &  
 ENVIRONMENTAL SCIENTISTS

PROJECT NAME: Railroad Safety Trail City of San Luis Obispo San Luis Obispo County, CA	
PROJECT NUMBER: 1502-2213	DATE: October 2016

SITE LOCATION MAP

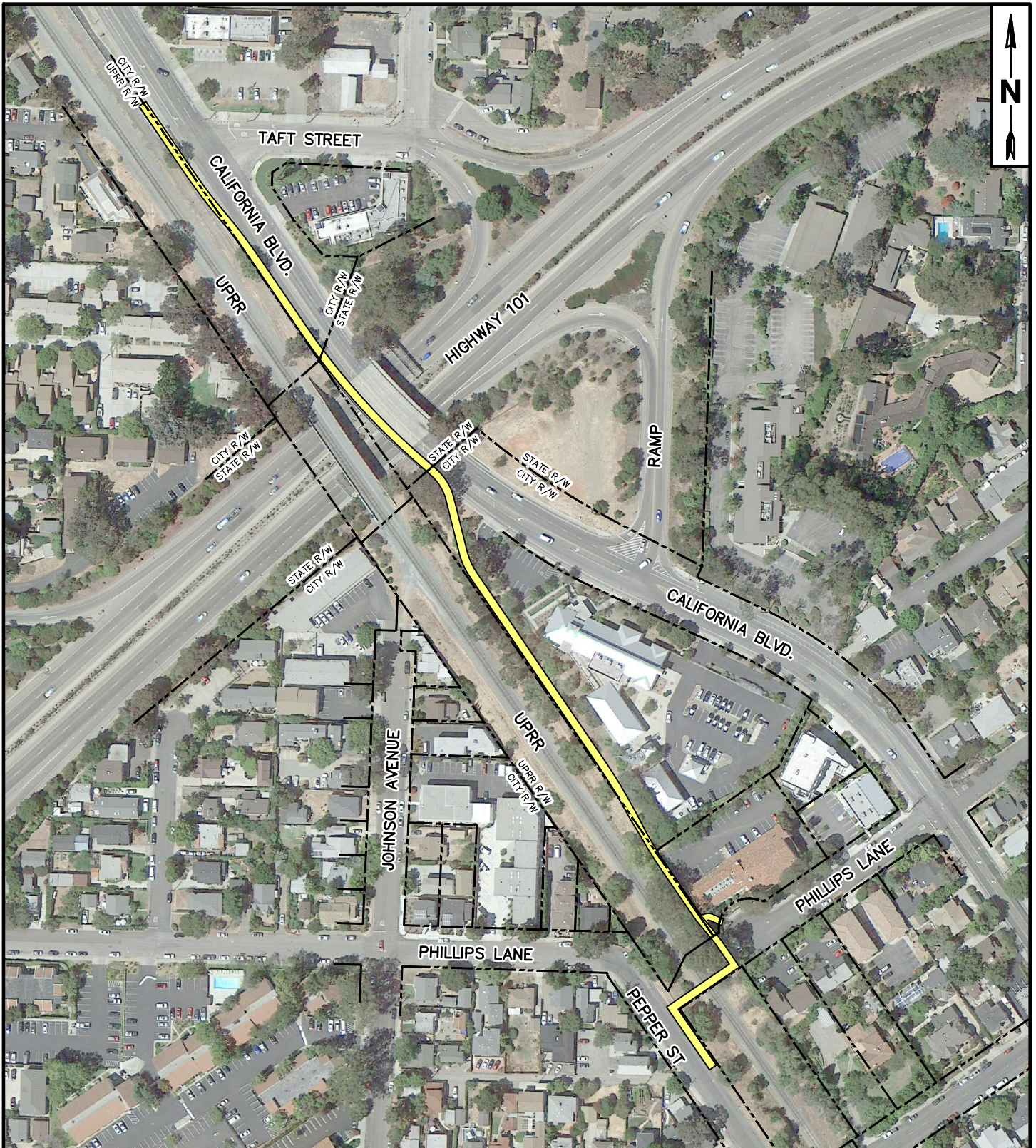
FIGURE  
 1

BASEMAP SOURCE: TOPOI 2001 NATIONAL GEOGRAPHIC HOLDINGS

**ATTACHMENT 2**


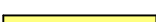
---

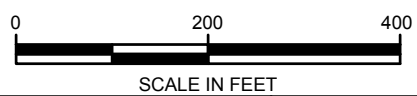
**Figure 2 – Site Plan**



BASEMAP SOURCE: GOOGLE EARTH PRO; IMAGE DATE: 8-23-2013

**LEGEND**

-  RIGHT OF WAY
-  PROPOSED RAILROAD SAFETY TRAIL



Z:\Current Projects\1502-2212 City SLO PW - Railroad Safety Trail\Graphics\City SLO Railroad Safety Trail.dwg, 11/10/2016 9:31:17 AM

**padre**  
associates, inc.  
ENGINEERS, GEOLOGISTS &  
ENVIRONMENTAL SCIENTISTS

PROJECT NAME: Railroad Safety Trail City of San Luis Obispo San Luis Obispo County, CA	
PROJECT NUMBER: 1502-2213	DATE: October 2016

SITE PLAN

FIGURE  
2

**ATTACHMENT 3**

---

**Project Plans**

# general notes:

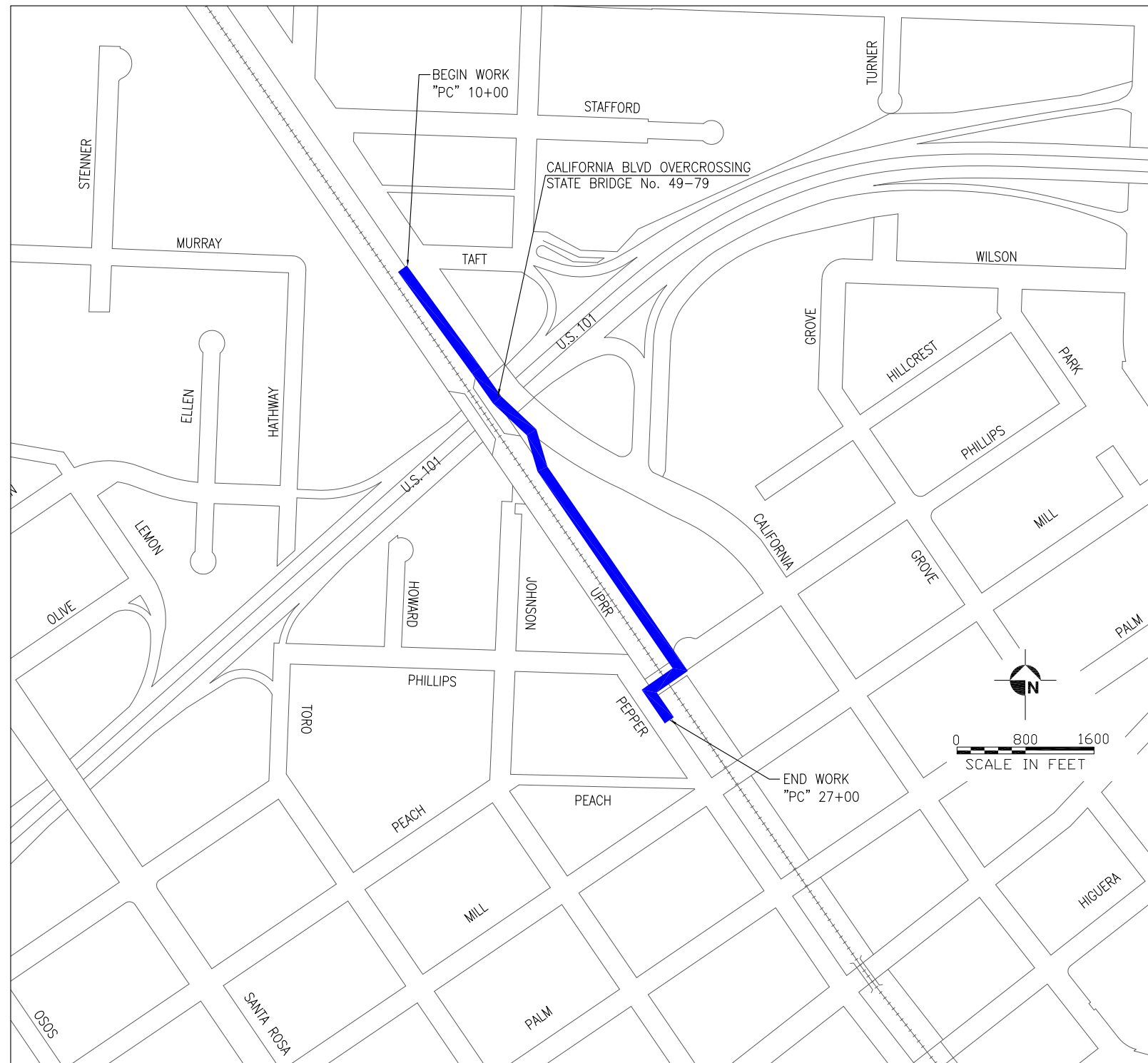
- IT SHALL BE THE RESPONSIBILITY OF THE CONTRACTOR OR PERMITTEE TO CONTACT "UNDERGROUND SERVICE ALERT OF NORTHERN CALIFORNIA" BY PHONE AT 8-1-1 FORTY-EIGHT (48) HOURS PRIOR TO START OF CONSTRUCTION FOR LOCATION OF POWER, TELEPHONE, OIL AND NATURAL GAS UNDERGROUND FACILITIES. CONTRACTOR OR PERMITEE SHALL ALSO CONTACT THE APPROPRIATE AGENCY FOR THE LOCATION OF CABLE T.V., WATER, SEWER, DRAINAGE OR UNDERGROUND FACILITIES.
- THE CONTRACTOR SHALL POSSESS A CLASS 'A' LICENSE AT THE TIME THE CONTRACT IS AWARDED.

# abbreviations

- PVI - POINT OF VERTICAL INTERSECTION
- LVC - LENGTH OF VERTICAL CURVE
- "PC" - PROPOSED CENTERLINE ALIGNMENT
- OG - ORIGINAL GROUND
- PG - PROFILE GRADE
- BB - BEGIN BRIDGE
- EB - END BRIDGE
- ELEV - ELEVATION
- BVCE - BEGIN VERTICAL CURVE ELEVATION
- BVCS - BEGIN VERTICAL CURVE STATION
- STA - STATION
- EVCE - END VERTICAL CURVE ELEVATION
- EVCS - END VERTICAL CURVE STATION
- LVC - LENGTH OF VERTICAL CURVE
- K - HORIZONTAL DISTANCE REQUIRED FOR 1% CHANGE IN SLOPE OF A VERTICAL CURVE
- PCC - PORTLAND CEMENT CONCRETE
- BC - BACK OF CURB OR BEGIN CURVE
- PRC - POINT OF REVERSE CURVE
- TC - TOP OF CURB
- FG - FINISHED GRADE
- LIP - LIP OF GUTTER
- FL - FLOWLINE
- ELEV - ELEVATION
- Exist - EXISTING
- Eng - ENGINEERING
- Std - STANDARD
- UPRR - UNION PACIFIC RAILROAD
- R/W - RIGHT OF WAY

Reference Documents:  
 City Standard Specifications - January 2016 Edition  
 City Engineering Standards - January 2016 Edition  
 Caltrans Standard Plans - 2010  
 Caltrans Standard Specifications - 2010  
 UPRR Technical Specifications for the Construction of Industrial Tracks - <http://www.up.com/customers/ind-dev/operations/specs/track>  
 CPUC General Orders - <http://www.cpuc.ca.gov/generalorders/>

**50% PS&E SUBMITTAL  
 NOT FOR CONSTRUCTION**



# index to plans

sheet no.	description
1	TITLE SHEET
2-5	TYPICAL SECTIONS
6-9	LAYOUT
10-13	PROFILE



10680 White Rock Rd., Suite 100  
 Rancho Cordova, California 95670



ORIGINAL SCALE IN INCHES FOR REDUCED PLANS: 0 1 2 3

NO.	DATE	REVISION DESCRIPTION	APPROVED
△			
△			
△			



San Luis Obispo County, California

# Project Plans for the construction of the Railroad Safety Trail Taft to Pepper Project

**SPECIFICATION NO.** \_\_\_\_\_

<b>APPROVED BY</b>  Barbara Lynch R.C.E. C053418 City Engineer	DATE	04-08-16
	FILE NO./LOCATION	
	SHEET	1 OF 13

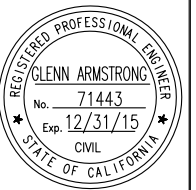


**RAILROAD SAFETY TRAIL - TAFT TO PEPPER**

**TYPICAL SECTIONS**

PROJECT TITLE:

SHEET TITLE:



DESIGNED BY:  
A. BEDAL

DRAWN BY:  
A. BEDAL

CHECKED BY:  
G. ARMSTRONG

APPROVED BY:  
M. IMBRIANI

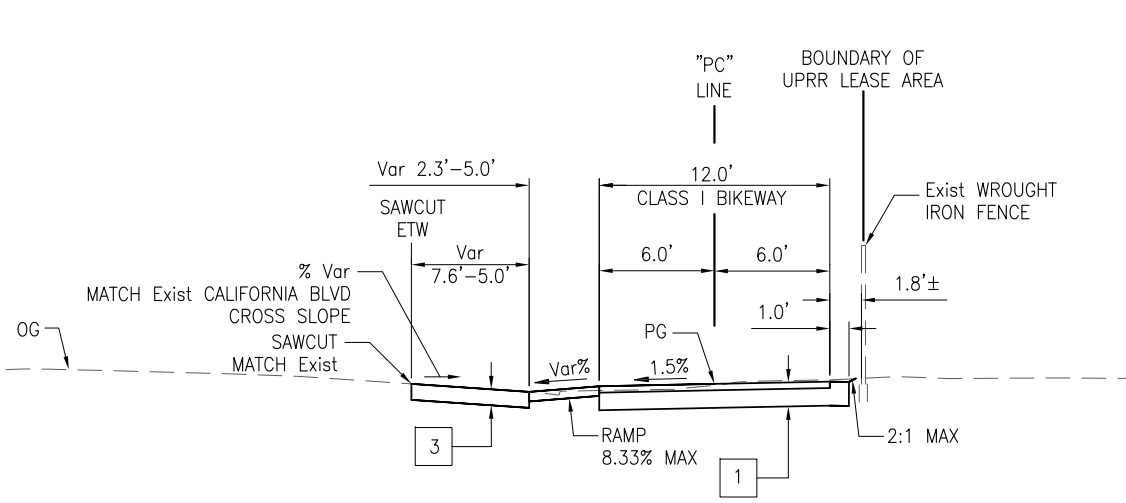
SCALE:  
N.T.S

DATE:  
04-08-16

CITY SPECIFICATION NO.  
SPEC NO

PLAN FILE NO. / LOCATION  
(CITY USE)

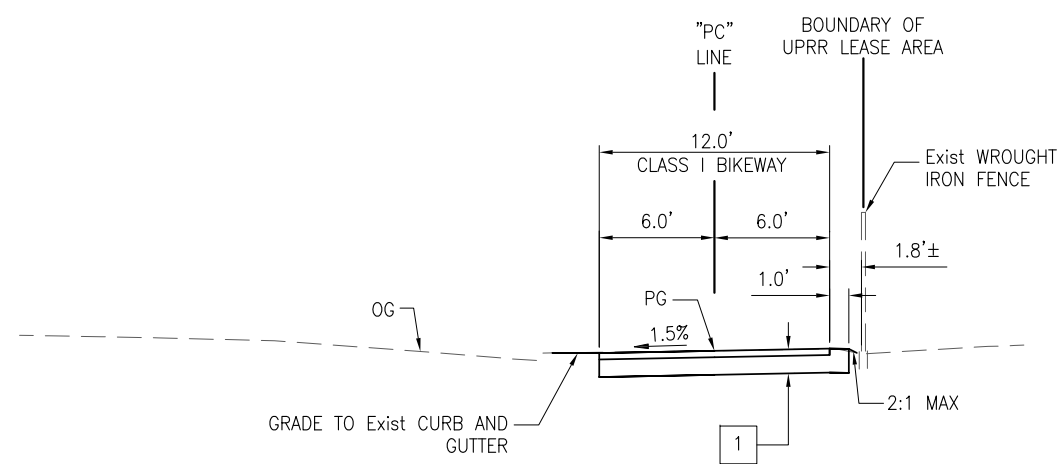
SHEET NO.



**"PC" LINE**  
STA 10+28.00 TO STA 10+42.73

**PAVEMENT STRUCTURAL SECTIONS**

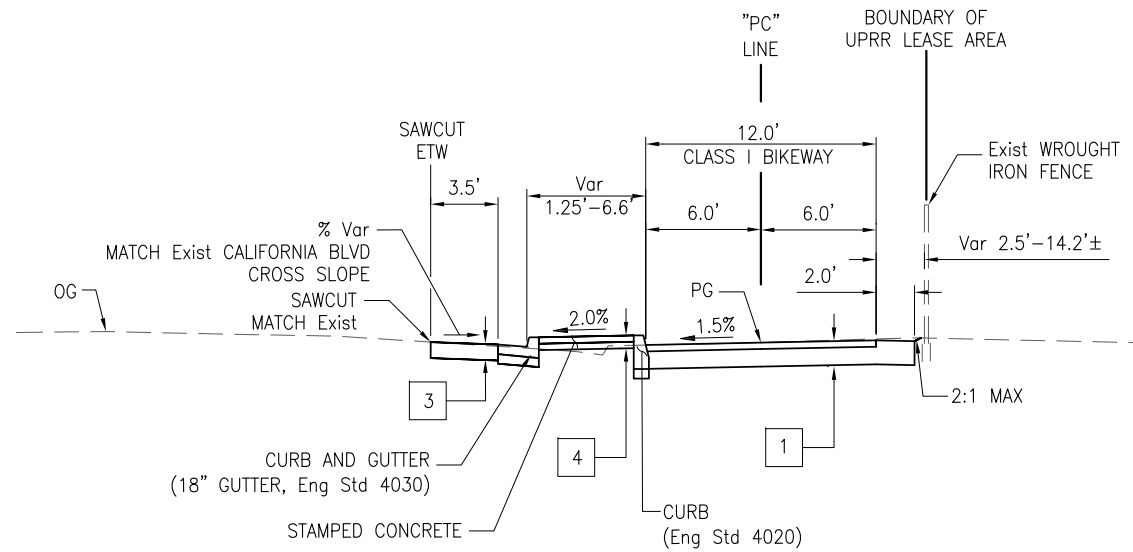
- 1 0.33' HOT MIX ASPHALT (TYPE A)  
1.0' AB (CLASS 2) WITH TRIAXIAL GEOGRID  
(TENSAR TX 140 OR EQUAL) INSTALLED AT  
THE BOTTOM OF THE CLASS 2 BASE
- 2 0.33' PCC CONCRETE  
0.33' AB (CLASS 2)
- 3 0.83' HOT MIX ASPHALT (TYPE A)
- 4 0.33' PCC STAMPED CONCRETE  
0.33' AB (CLASS 2)



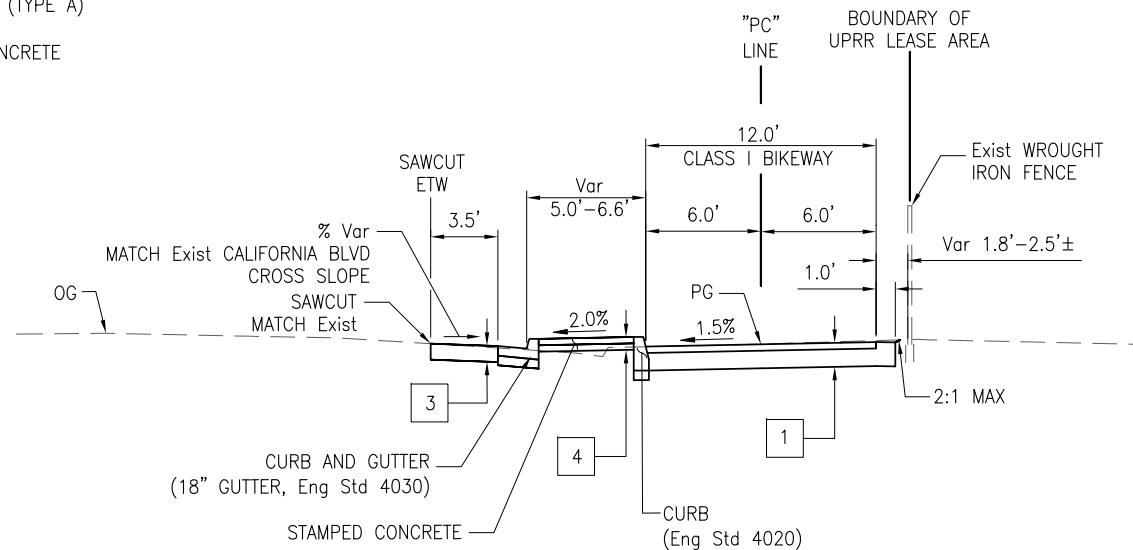
**"PC" LINE**  
STA 10+00.00 TO STA 10+28.00

**NOTES:**

1. ETW IDENTIFIES THE LOCATION OF THE OUTER EDGE LINE TRAFFIC STRIPE.
2. ALL CURBS TO BE 6" HIGH AS MEASURED FROM ADJACENT PAVEMENT SURFACE.
3. THE TRIAXIAL GEOGRID TO BE BID AS AN ADDITIVE ALTERNATE.



**"PC" LINE**  
STA 11+00.00 TO STA 12+61.35



**"PC" LINE**  
STA 10+42.73 TO STA 11+00.00

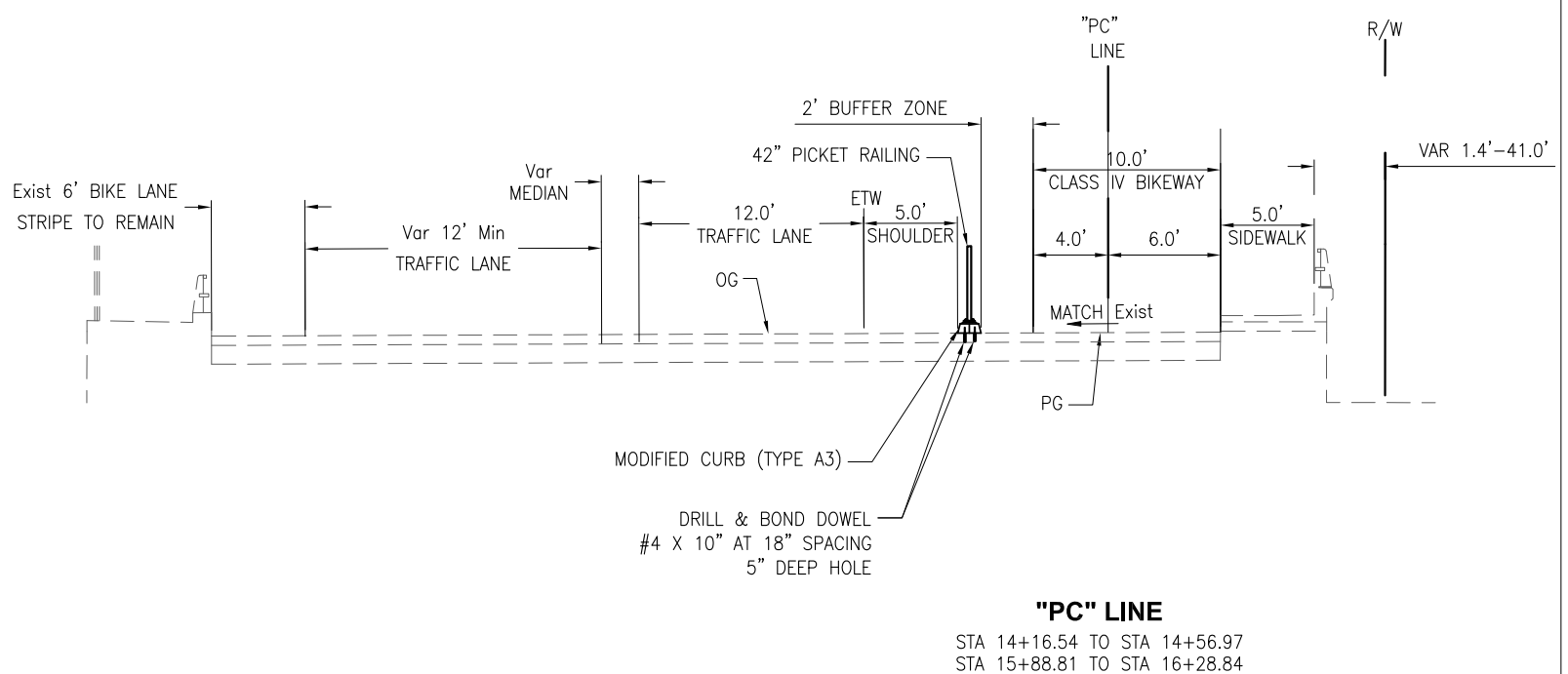
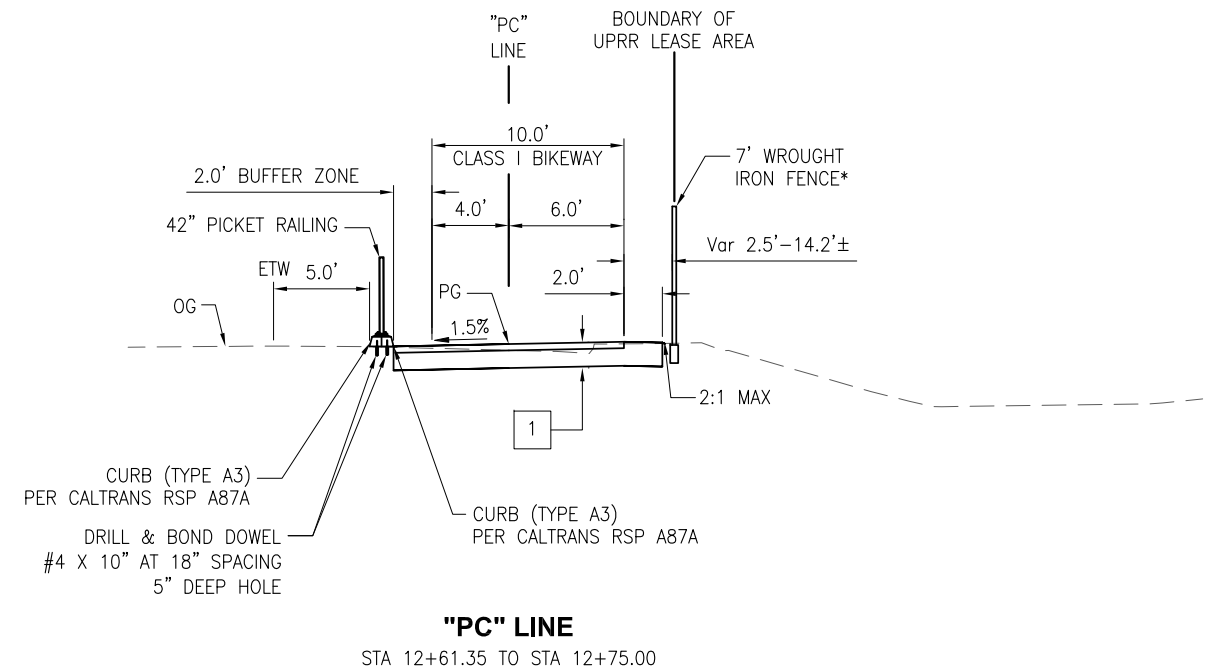
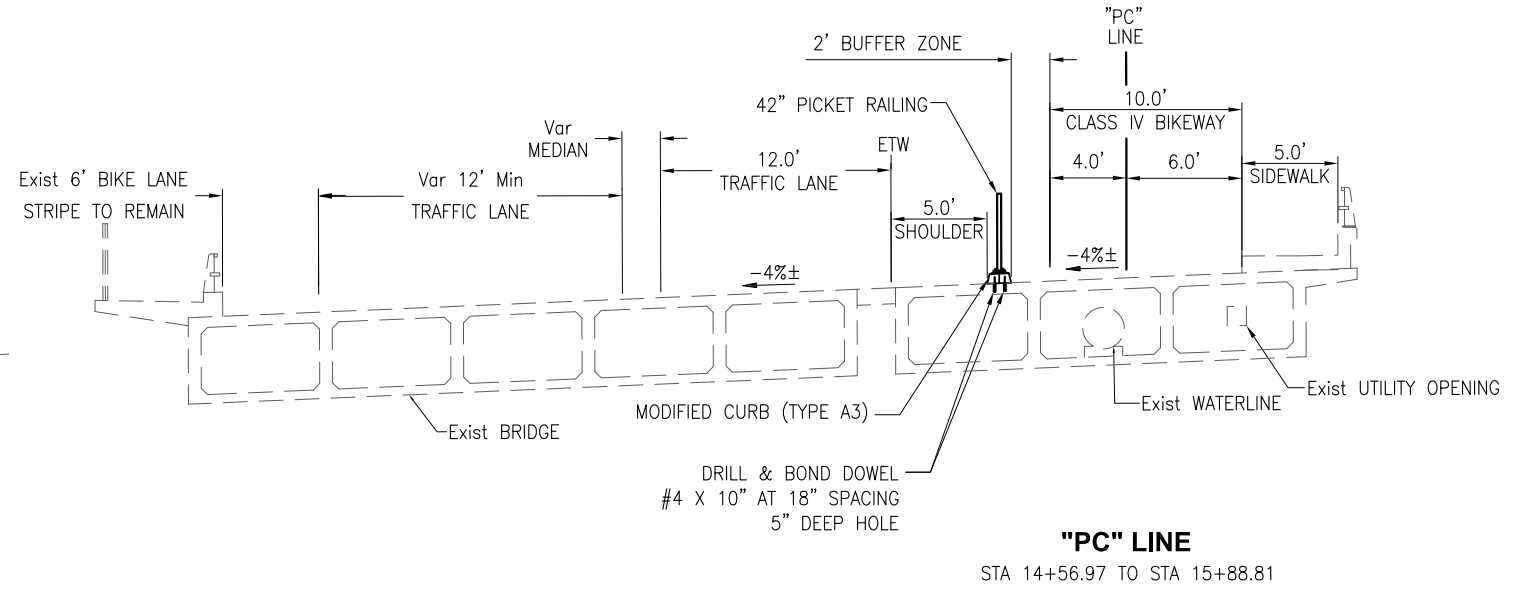
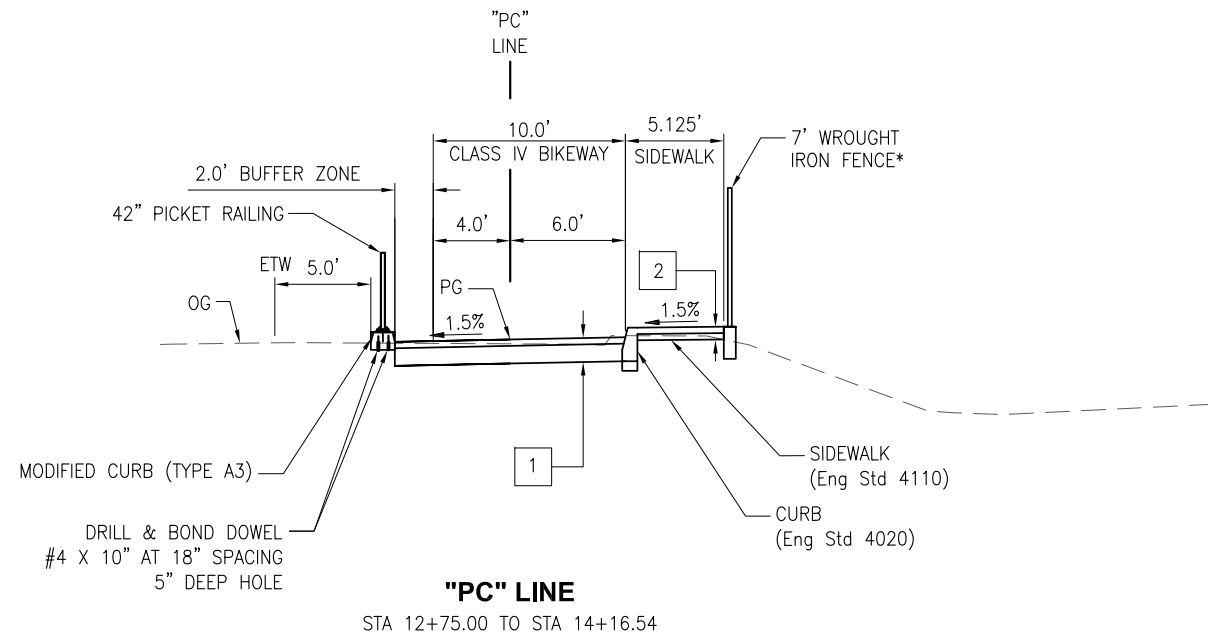
**50% PS&E SUBMITTAL  
NOT FOR CONSTRUCTION**





**RAILROAD SAFETY TRAIL - TAFT TO PEPPER**

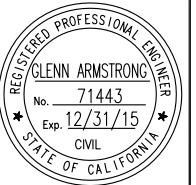
**TYPICAL SECTIONS**



50% PS&E SUBMITTAL  
NOT FOR CONSTRUCTION

PROJECT TITLE:

SHEET TITLE:



DESIGNED BY:	A. BEDAL
DRAWN BY:	A. BEDAL
CHECKED BY:	G. ARMSTRONG
APPROVED BY:	M. IMBRIANI
SCALE:	N.T.S
DATE:	04-08-16
CITY SPECIFICATION NO.:	SPEC NO
PLAN FILE NO. / LOCATION:	(CITY USE)
SHEET NO.:	

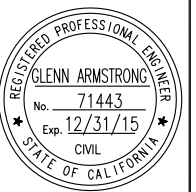


**RAILROAD SAFETY TRAIL - TAFT TO PEPPER**

**TYPICAL SECTIONS**

PROJECT TITLE:

SHEET TITLE:



DESIGNED BY:  
A. BEDAL

DRAWN BY:  
A. BEDAL

CHECKED BY:  
G. ARMSTRONG

APPROVED BY:  
M. IMBRIANI

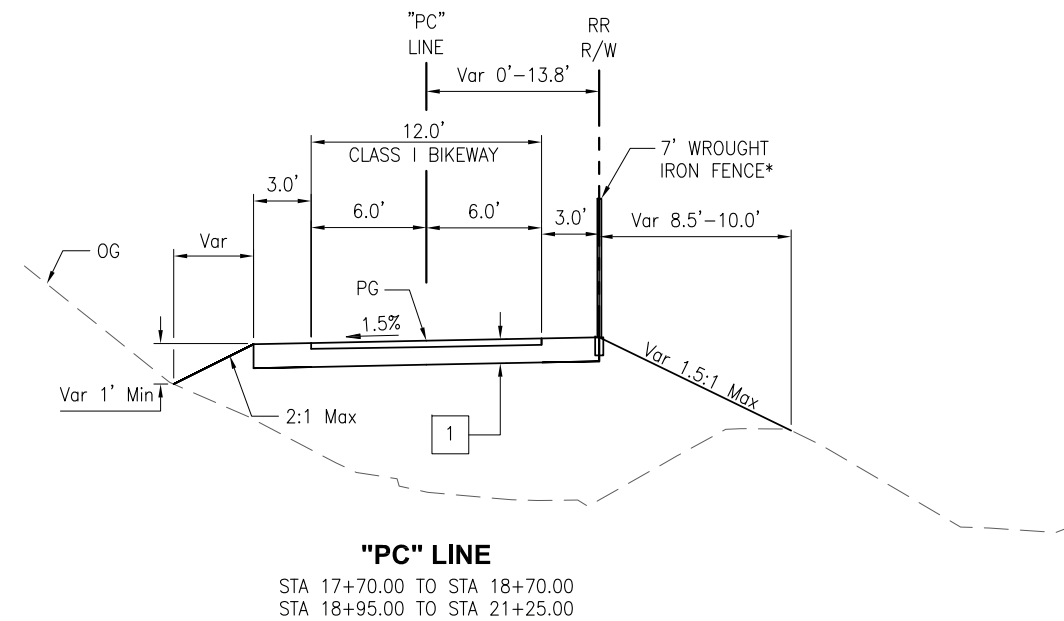
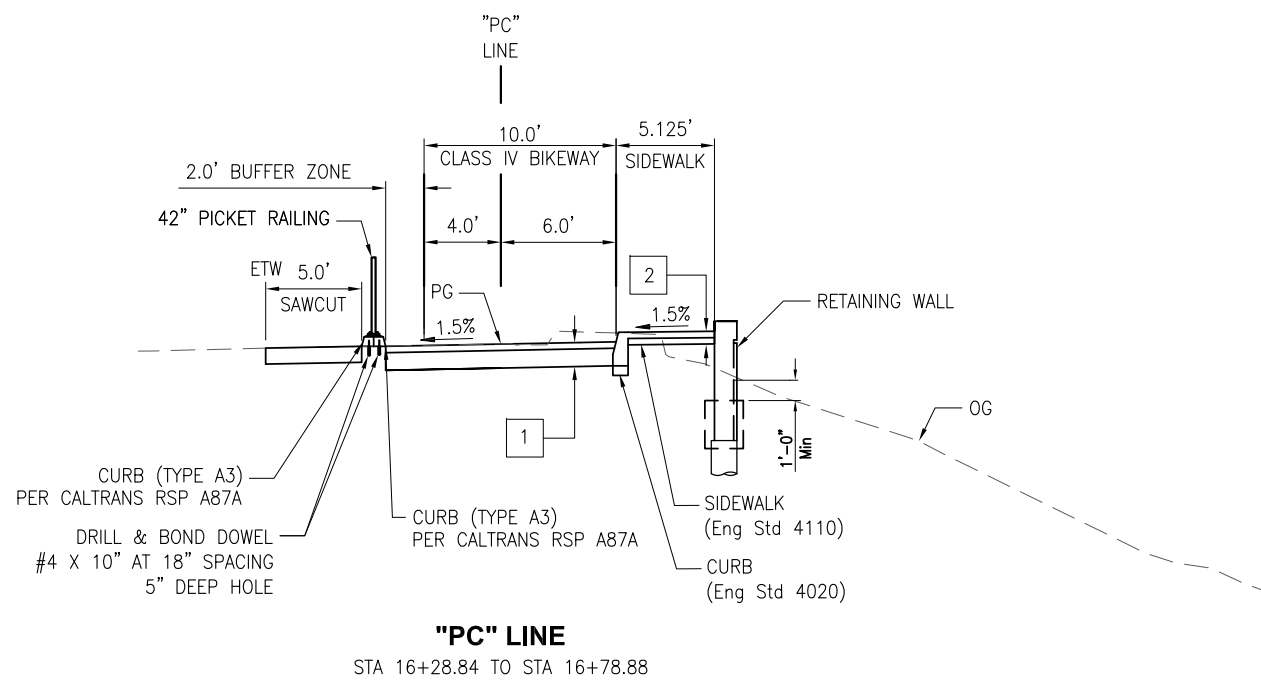
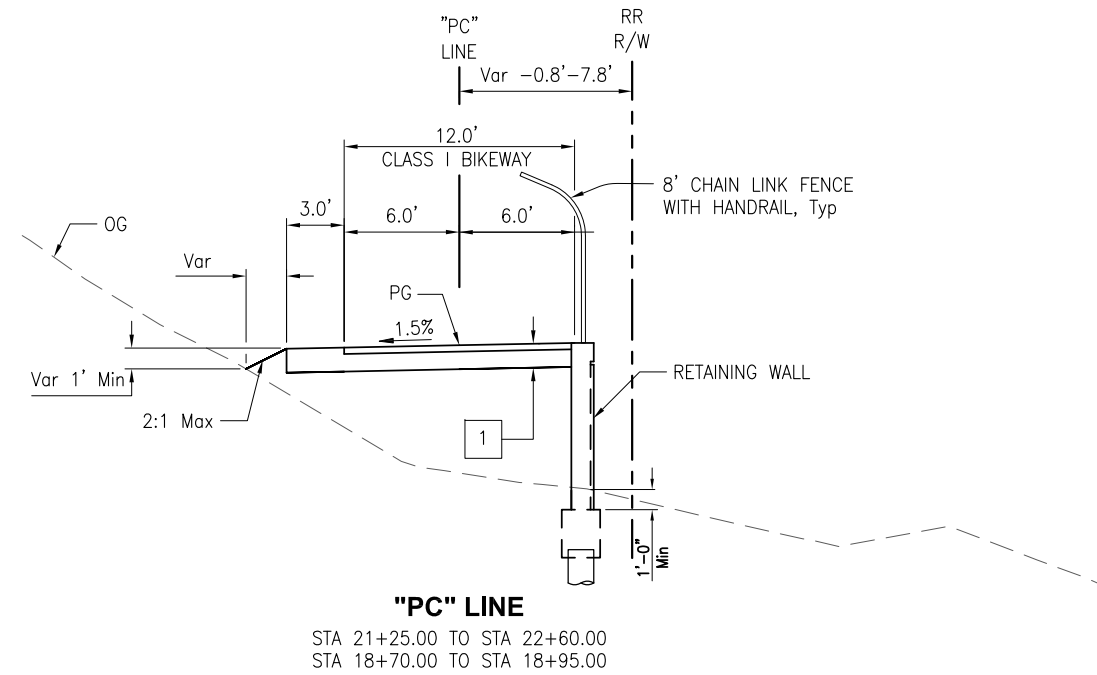
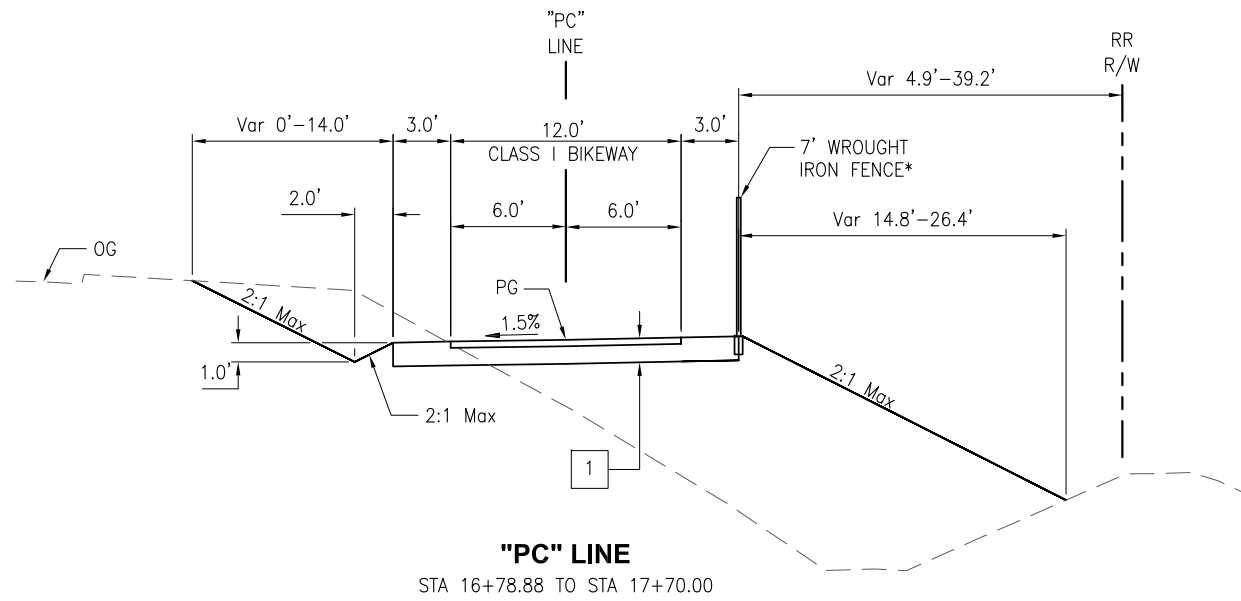
SCALE:  
N.T.S

DATE:  
04-08-16

CITY SPECIFICATION NO.  
SPEC NO

PLAN FILE NO. / LOCATION  
(CITY USE)

SHEET NO.

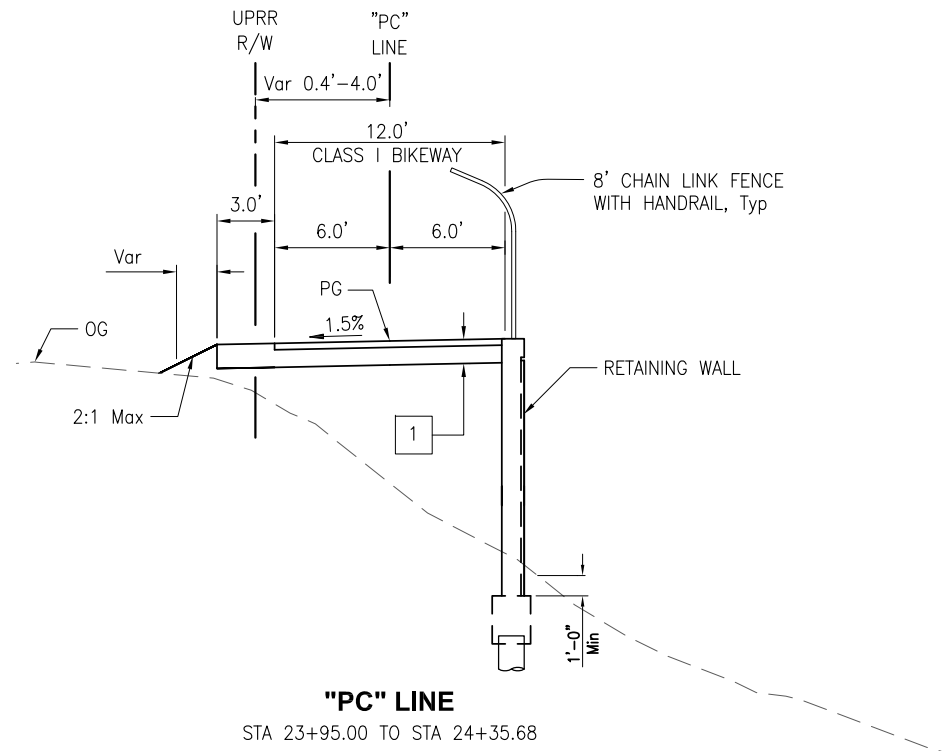


50% PS&E SUBMITTAL  
NOT FOR CONSTRUCTION

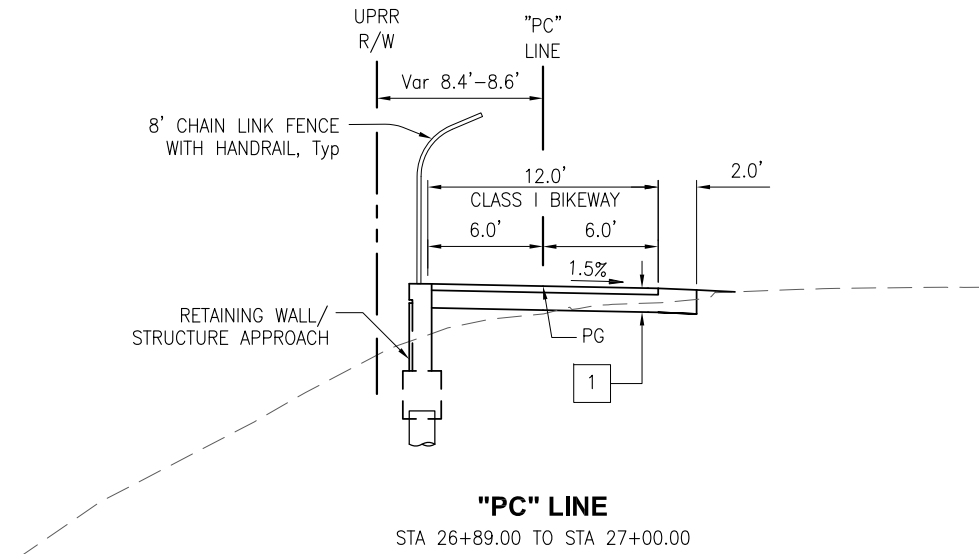


**RAILROAD SAFETY TRAIL - TAFT TO PEPPER**

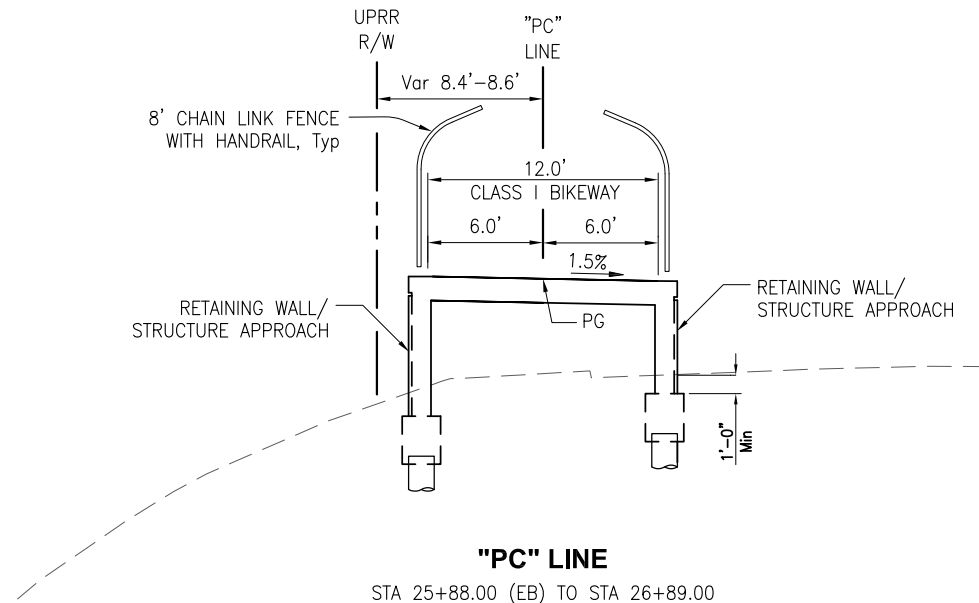
**TYPICAL SECTIONS**



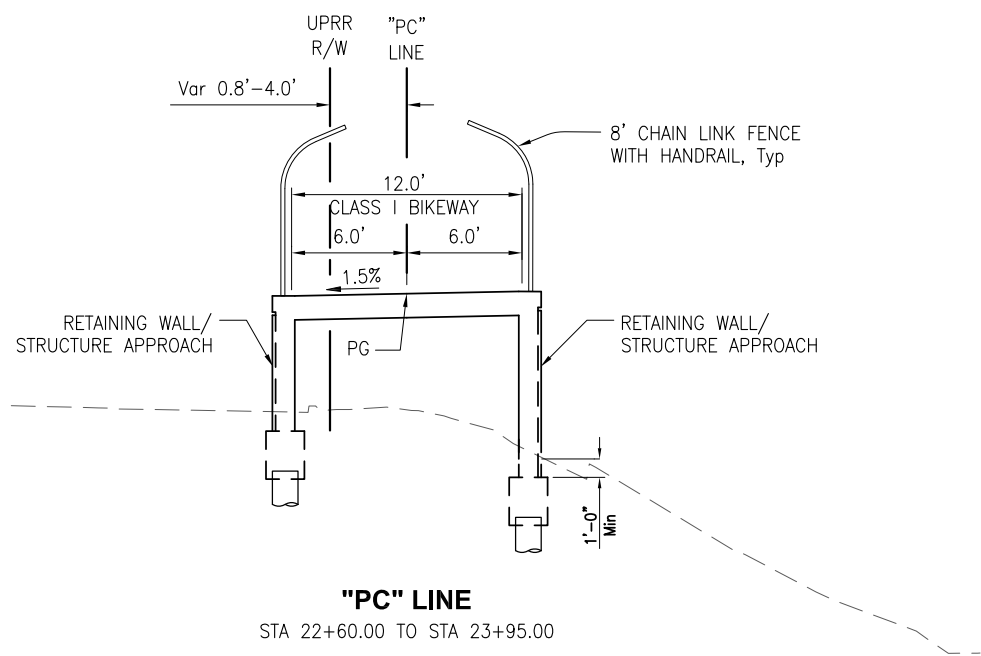
**"PC" LINE**  
STA 23+95.00 TO STA 24+35.68



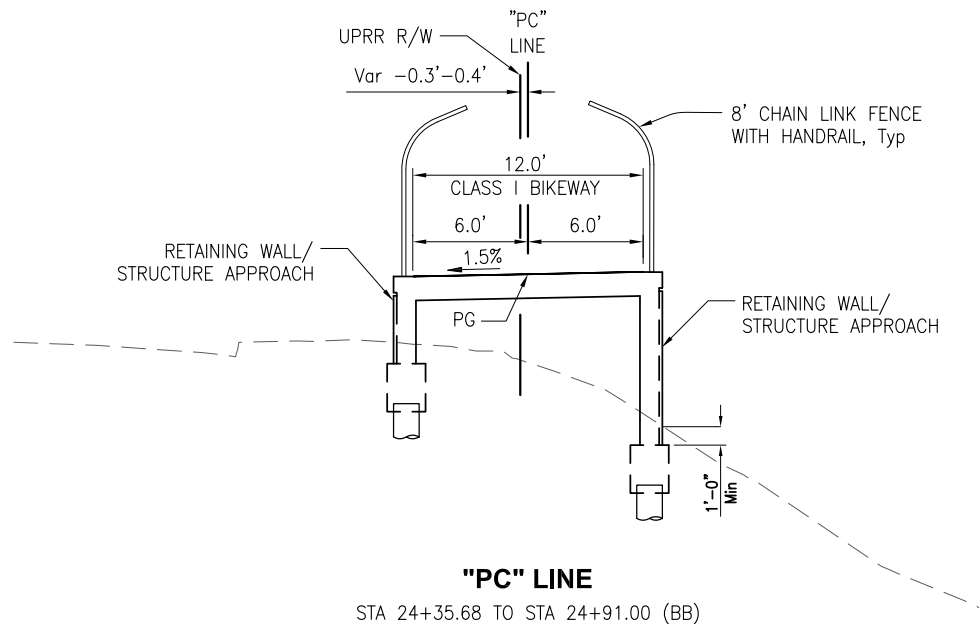
**"PC" LINE**  
STA 26+89.00 TO STA 27+00.00



**"PC" LINE**  
STA 25+88.00 (EB) TO STA 26+89.00



**"PC" LINE**  
STA 22+60.00 TO STA 23+95.00

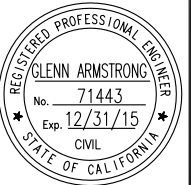


**"PC" LINE**  
STA 24+35.68 TO STA 24+91.00 (BB)

50% PS&E SUBMITTAL  
NOT FOR CONSTRUCTION

PROJECT TITLE:

SHEET TITLE:



DESIGNED BY: A. BEDAL  
DRAWN BY: A. BEDAL  
CHECKED BY: G. ARMSTRONG  
APPROVED BY: M. IMBRIANI  
SCALE: N.T.S.  
DATE: 04-08-16  
CITY SPECIFICATION NO. SPEC NO  
PLAN FILE NO. / LOCATION (CITY USE)  
SHEET NO.

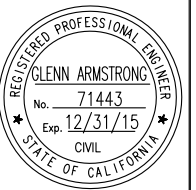


**RAILROAD SAFETY TRAIL - TAFT TO PEPPER**

LAYOUT

PROJECT TITLE:

SHEET TITLE:



DESIGNED BY:

A. BEDAL

DRAWN BY:

A. BEDAL

CHECKED BY:

G. ARMSTRONG

APPROVED BY:

M. IMBRIANI

SCALE:

1"=20'

DATE:

04-08-16

CITY SPECIFICATION NO.

SPEC NO

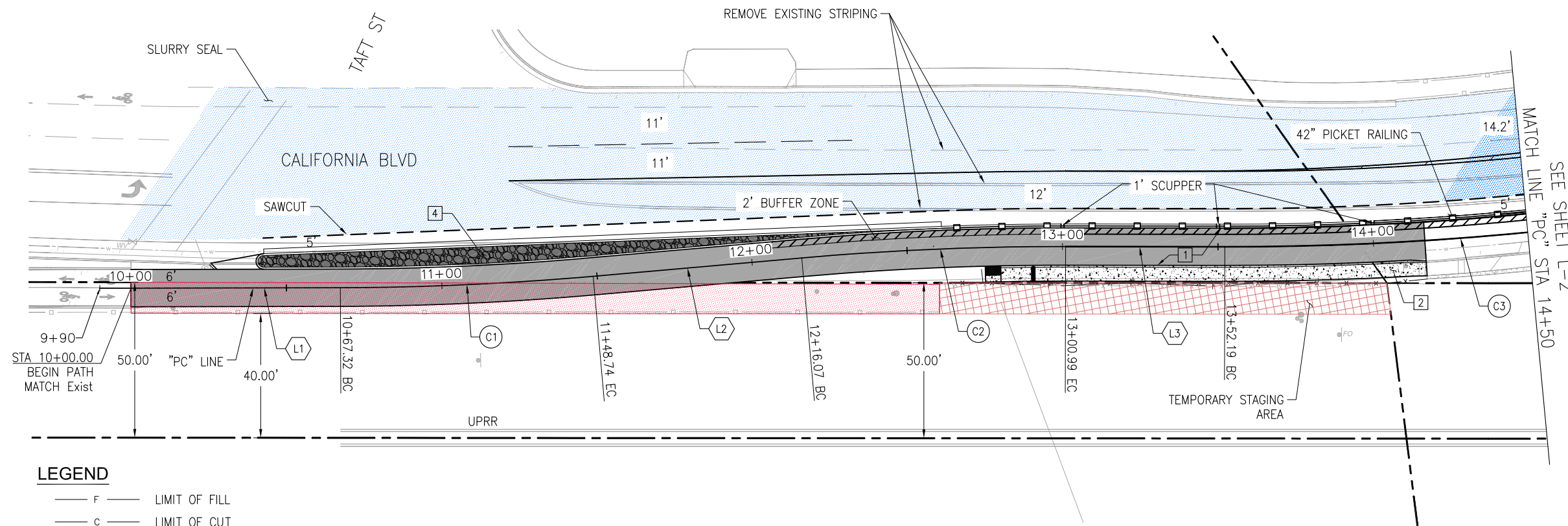
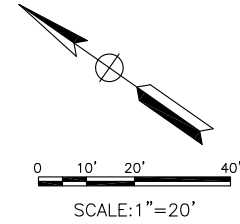
PLAN FILE NO. / LOCATION

(CITY USE)

SHEET NO.

CURVE DATA				
CURVE	R	Δ	T	L
C1	950.00'	4°54'38.52"	40.74'	81.42'
C2	950.00'	5°07'18.12"	42.49'	84.92'
C3	994.00'	14°29'20.04"	126.35'	251.36'

LINE TABLE		
LINE	DISTANCE	BEARING
L1	77.32'	S34°29'33"E
L2	67.33'	S39°24'11"E
L3	51.20'	S34°16'53"E



**PLAN**  
1"=20'

**LEGEND**

- F — LIMIT OF FILL
- C — LIMIT OF CUT
- x-x- WROUGHT IRON FENCE
- - - Exist R/W
- - - CENTERLINE OF Exist RAILROAD TRACKS
- - - PAVEMENT SAWCUT
- ▲-▲- RETAINING WALL/STRUCTURE APPROACH
- PATH
- STAMPED CONCRETE
- SIDEWALK
- SLURRY SEAL
- EXISTING ACCESS RIGHTS ON UPRR R/W
- ADDITIONAL ACCESS RIGHTS ON UPRR R/W
- T.C.E. ON UPRR R/W
- PERMANENT EASEMENT REQUIRED FROM DEPARTMENT OF GENERAL SERVICES
- CONSTRUCTION STAGING AREAS

50% PS&E SUBMITTAL  
NOT FOR CONSTRUCTION

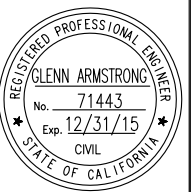


**RAILROAD SAFETY TRAIL - TAFT TO PEPPER**

LAYOUT

PROJECT TITLE:

SHEET TITLE:



DESIGNED BY: A. BEDAL

DRAWN BY: A. BEDAL

CHECKED BY: G. ARMSTRONG

APPROVED BY: M. IMBRIANI

SCALE: 1"=20'

DATE: 04-08-16

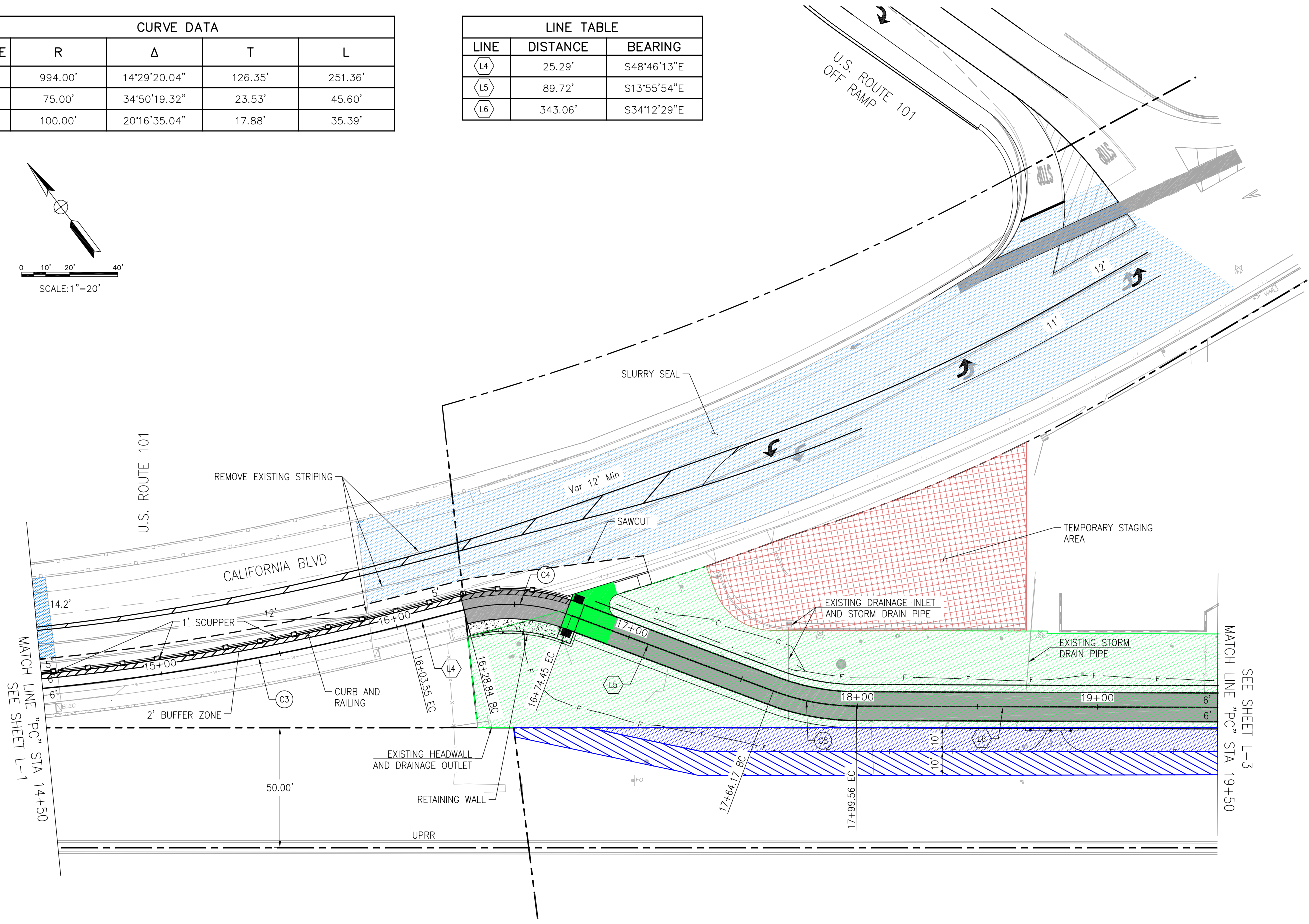
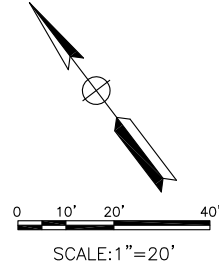
CITY SPECIFICATION NO. SPEC NO

PLAN FILE NO. / LOCATION (CITY USE)

SHEET NO.

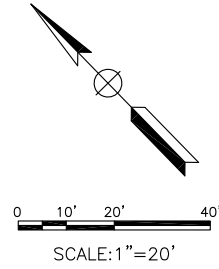
CURVE DATA				
CURVE	R	Δ	T	L
C3	994.00'	14°29'20.04"	126.35'	251.36'
C4	75.00'	34°50'19.32"	23.53'	45.60'
C5	100.00'	20°16'35.04"	17.88'	35.39'

LINE TABLE		
LINE	DISTANCE	BEARING
L4	25.29'	S48°46'13"E
L5	89.72'	S13°55'54"E
L6	343.06'	S34°12'29"E



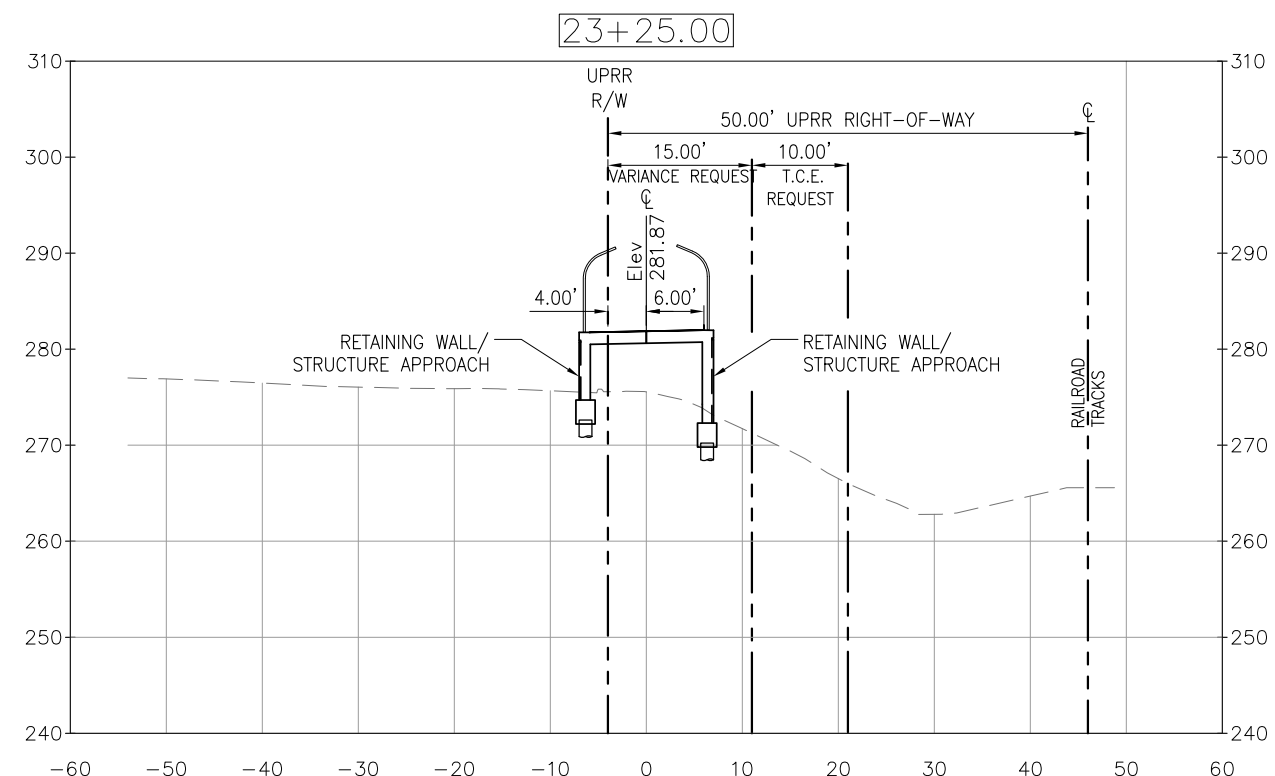
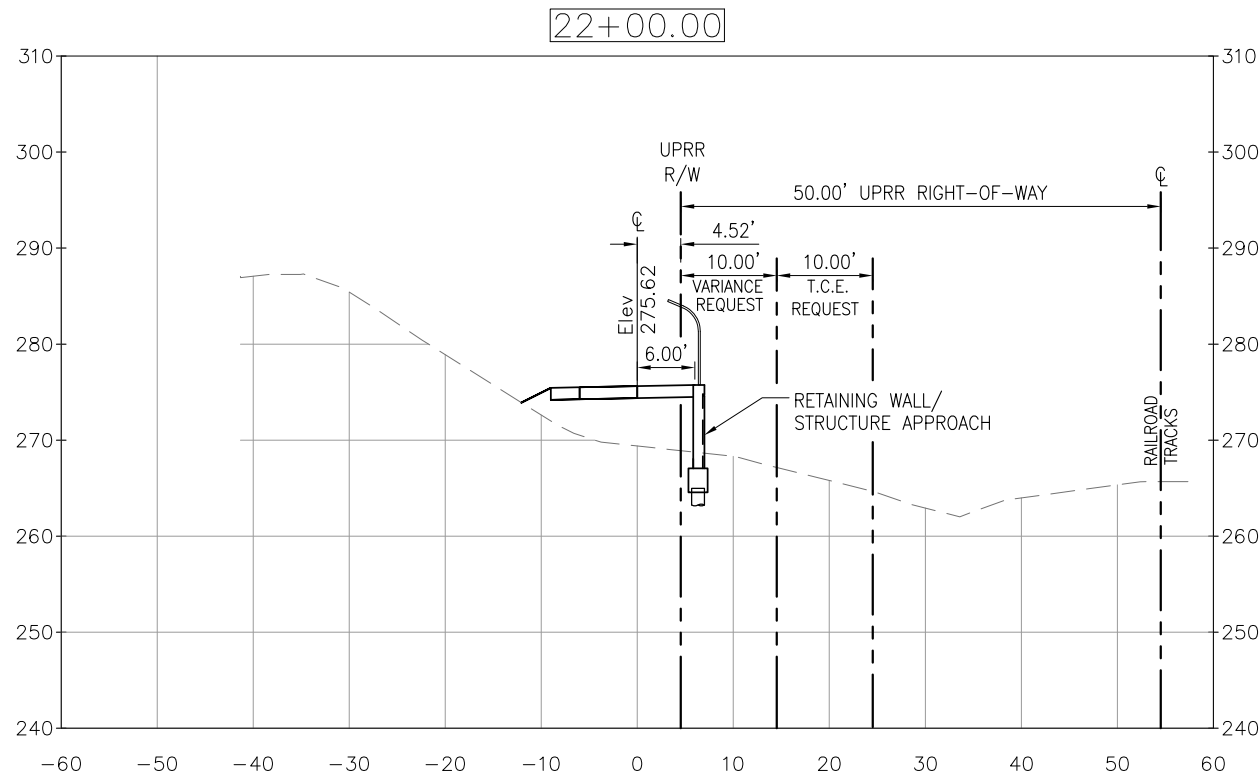
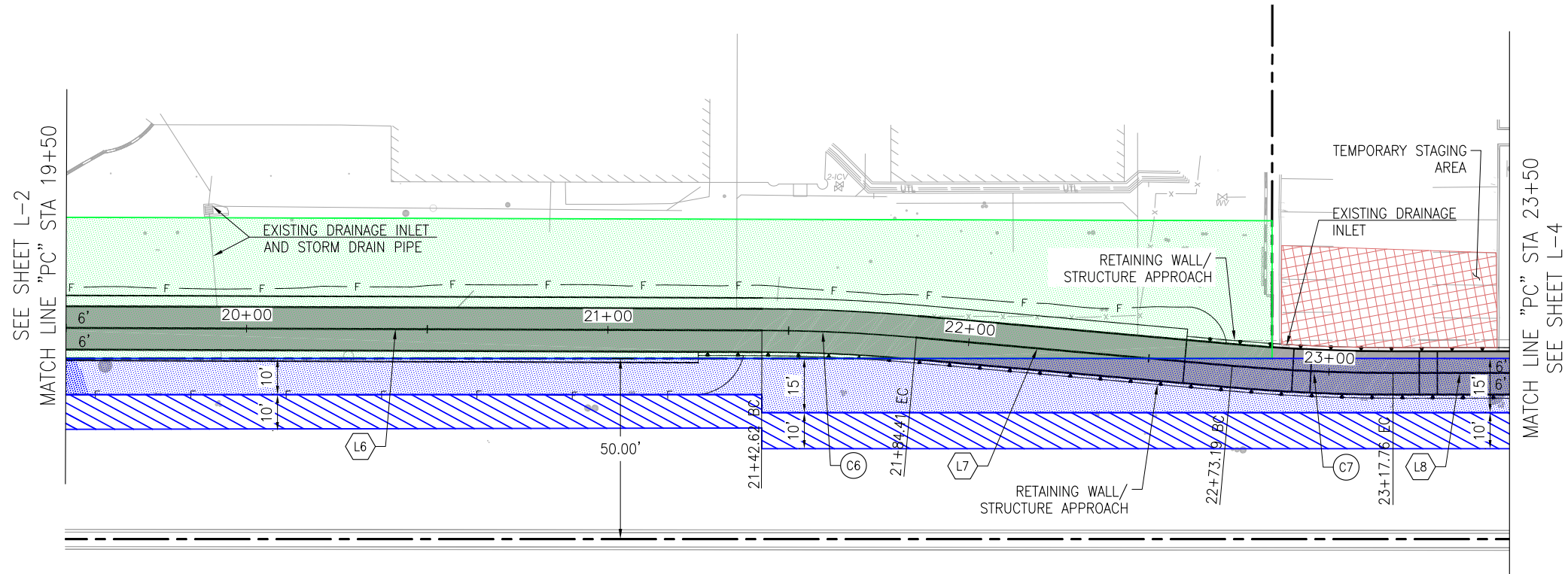
**PLAN**  
1"=20'

50% PS&E SUBMITTAL  
NOT FOR CONSTRUCTION



CURVE DATA				
CURVE	R	$\Delta$	T	L
C6	500.00'	4°54'13.32"	21.41'	42.79'
C7	500.00'	5°06'23.76"	22.30'	44.56'
C8	100.00'	5°34'19.92"	4.87'	9.73'
C9	100.00'	5°34'19.92"	4.87'	9.73'

LINE TABLE		
LINE	DISTANCE	BEARING
L6	343.06'	S34°12'29"E
L7	87.78'	S29°18'15"E
L8	78.05'	S34°24'39"E
L9	31.46'	S39°58'59"E



50% PS&E SUBMITTAL  
NOT FOR CONSTRUCTION

L-3



RAILROAD SAFETY TRAIL - TAFT TO PEPPER

LAYOUT

PROJECT TITLE:

SHEET TITLE:



DESIGNED BY:  
A. BEDAL

DRAWN BY:  
A. BEDAL

CHECKED BY:  
G. ARMSTRONG

APPROVED BY:  
M. IMBRIANI

SCALE:  
1"=20'

DATE:  
04-08-16

CITY SPECIFICATION NO.  
SPEC NO

PLAN FILE NO. / LOCATION  
(CITY USE)

SHEET NO.

8 of 13

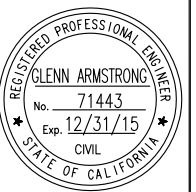


**RAILROAD SAFETY TRAIL - TAFT TO PEPPER**

LAYOUT

PROJECT TITLE:

SHEET TITLE:



DESIGNED BY:  
A. BEDAL

DRAWN BY:  
A. BEDAL

CHECKED BY:  
G. ARMSTRONG

APPROVED BY:  
M. IMBRIANI

SCALE:  
1"=20'

DATE:  
04-08-16

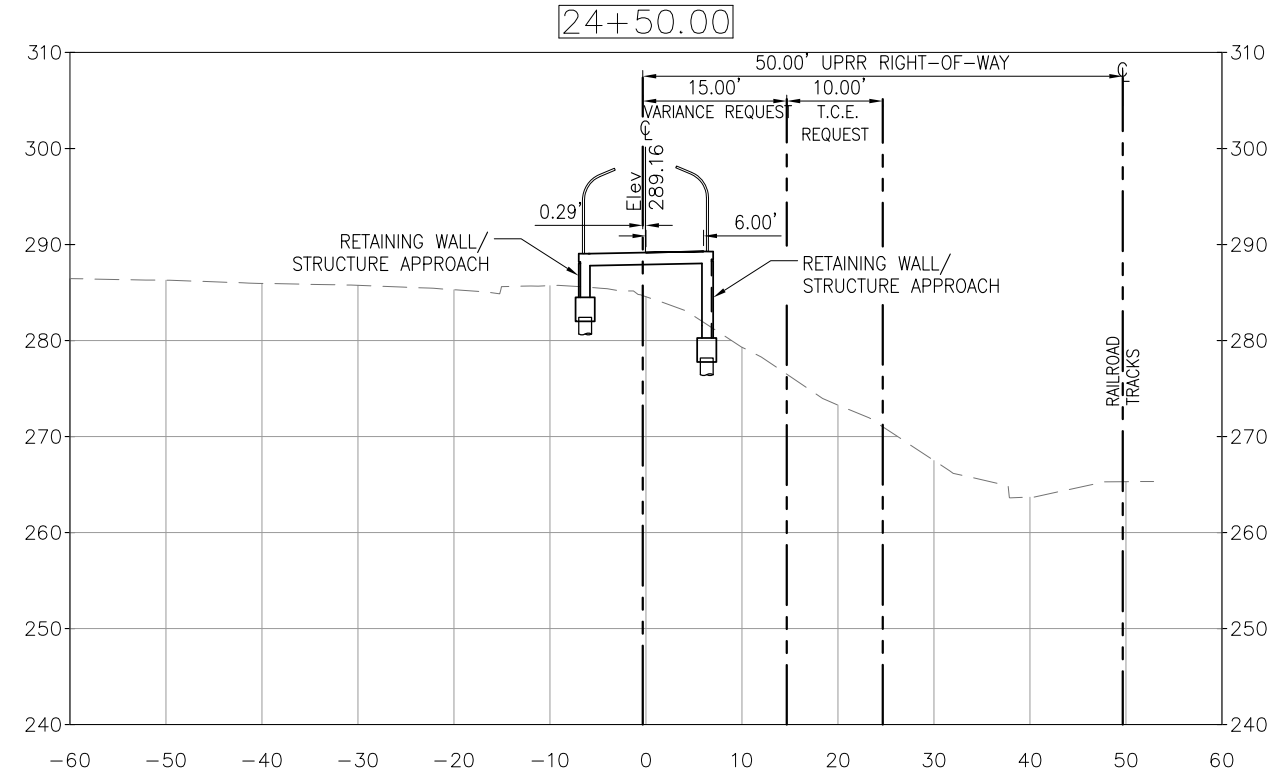
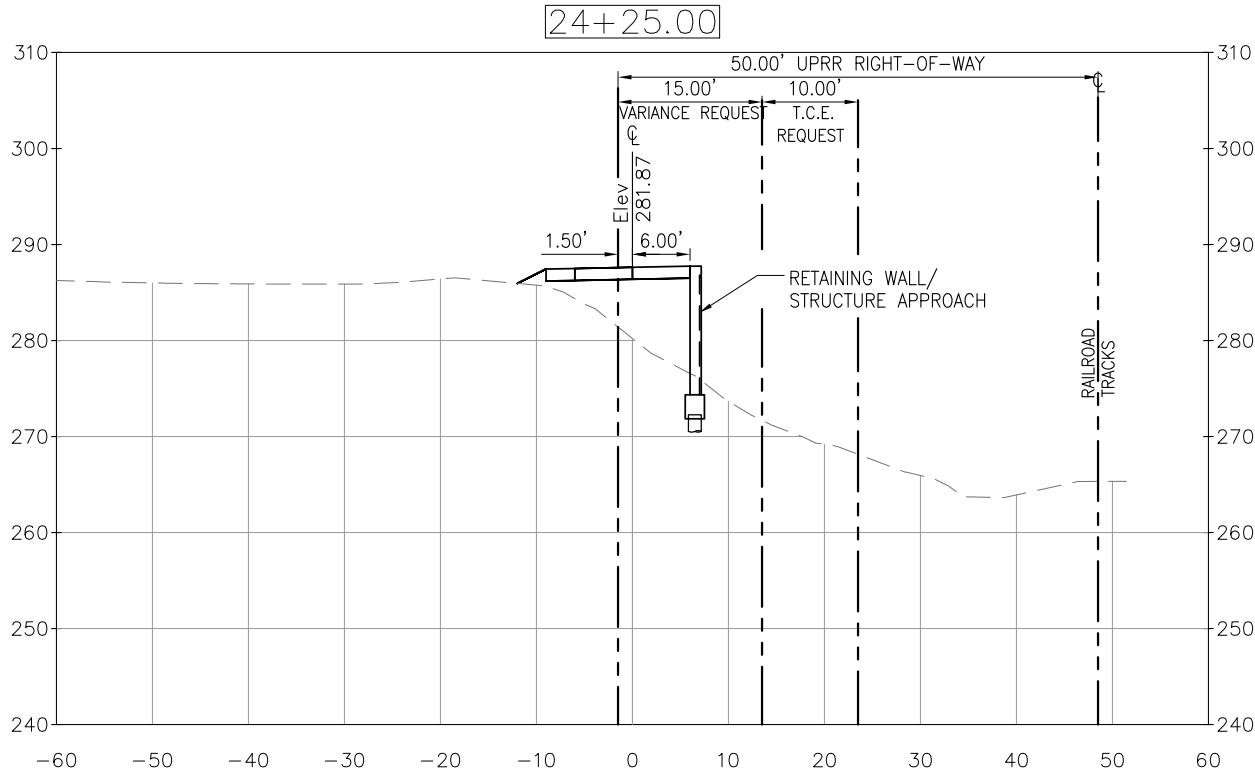
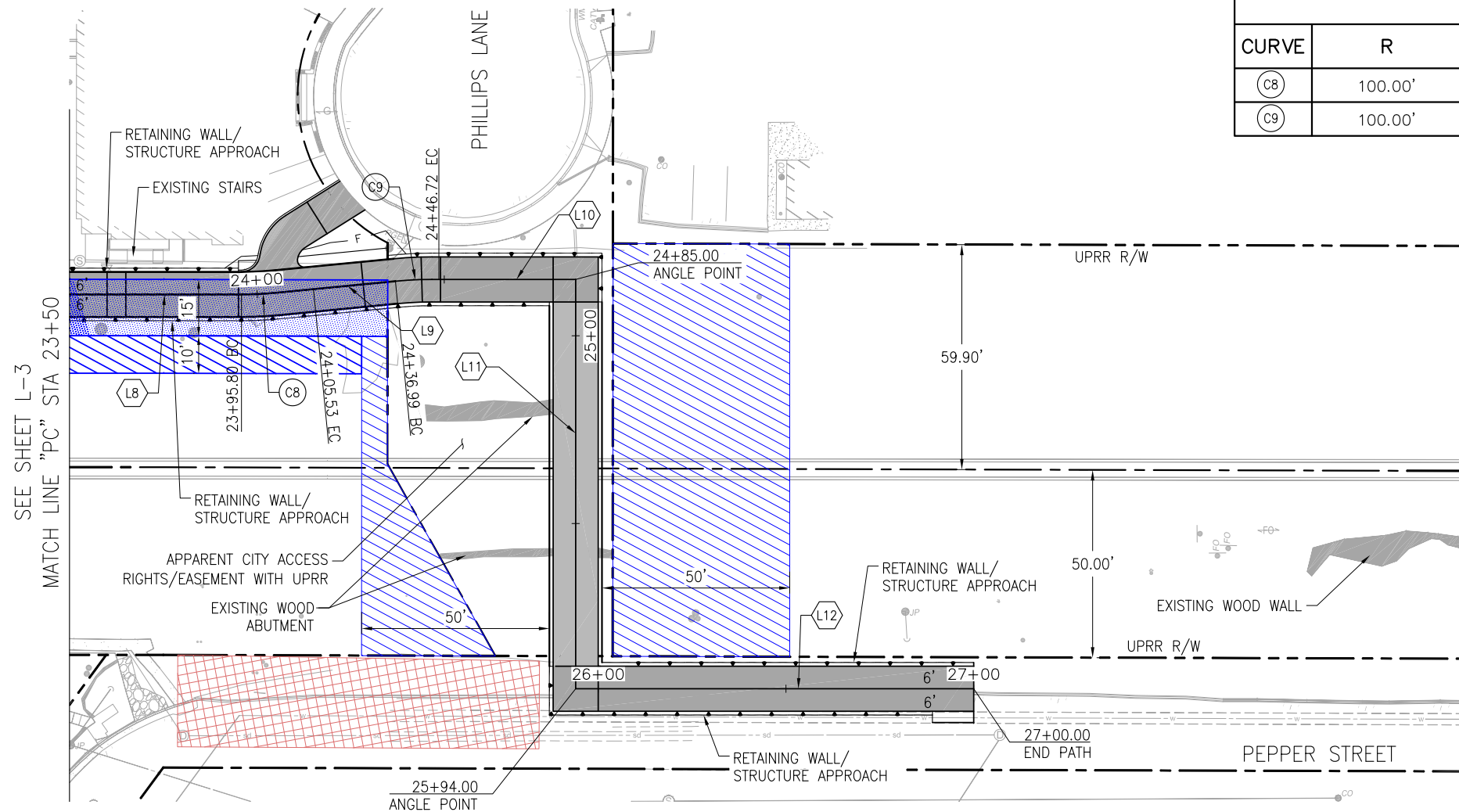
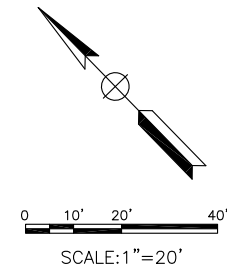
CITY SPECIFICATION NO.  
SPEC NO

PLAN FILE NO. / LOCATION  
(CITY USE)

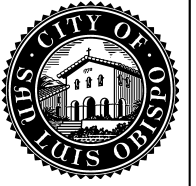
SHEET NO.

CURVE DATA				
CURVE	R	Δ	T	L
Ⓢ8	100.00'	5°34'19.92"	4.87'	9.73'
Ⓢ9	100.00'	5°34'19.92"	4.87'	9.73'

LINE TABLE		
LINE	DISTANCE	BEARING
Ⓢ10	38.28'	S34°24'39"E
Ⓢ11	109.00'	S55°35'21"E
Ⓢ12	106.00'	S34°24'39"E

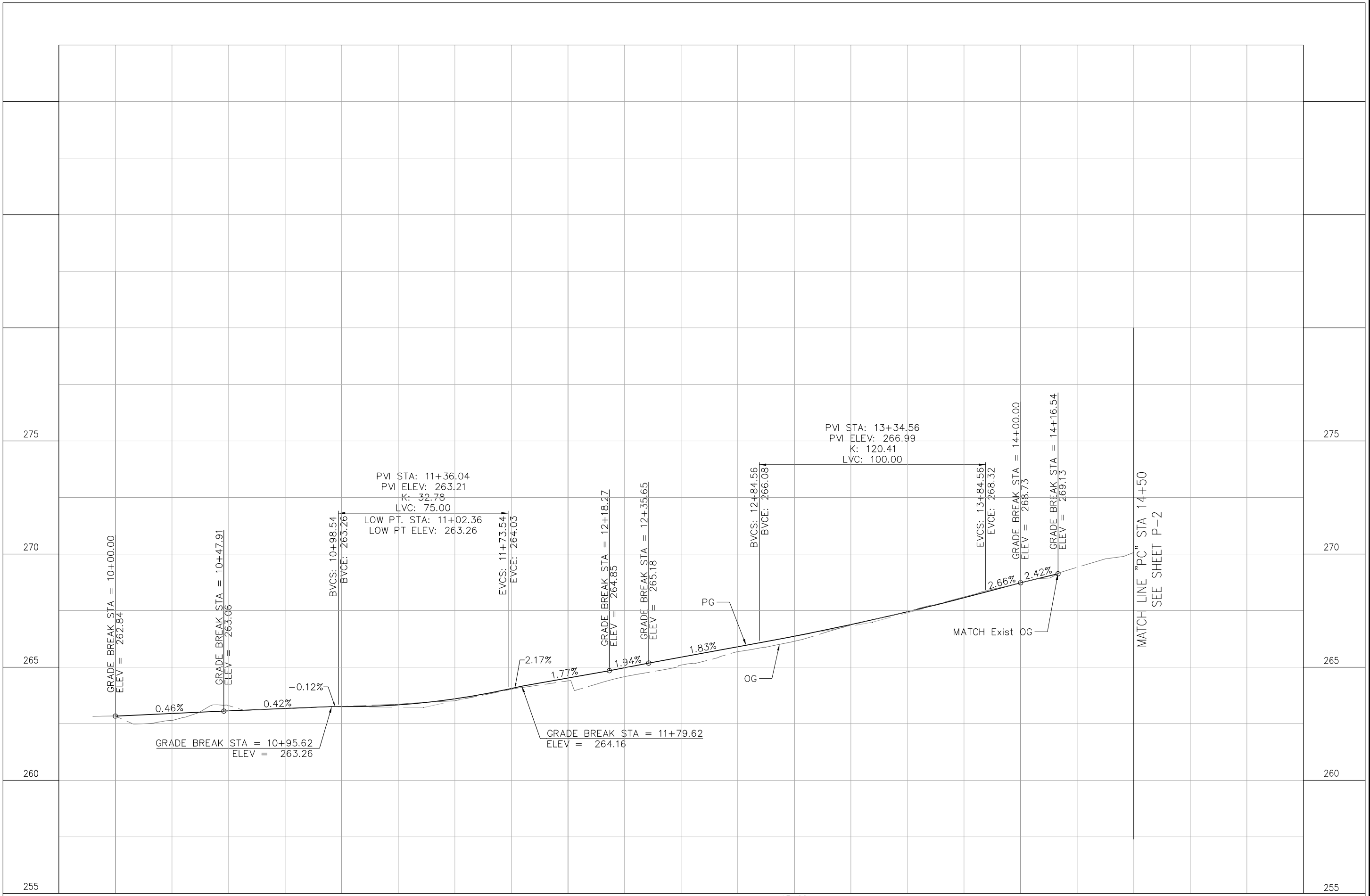


50% PS&E SUBMITTAL  
NOT FOR CONSTRUCTION

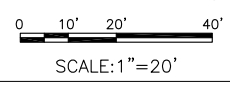


RAILROAD SAFETY TRAIL - TAFT TO PEPPER

PROFILE



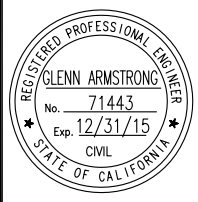
**PROFILE**  
 HORZ: 1"=20'  
 VERT: 1"=2'



50% PS&E SUBMITTAL  
 NOT FOR CONSTRUCTION

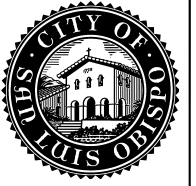
PROJECT TITLE:

SHEET TITLE:



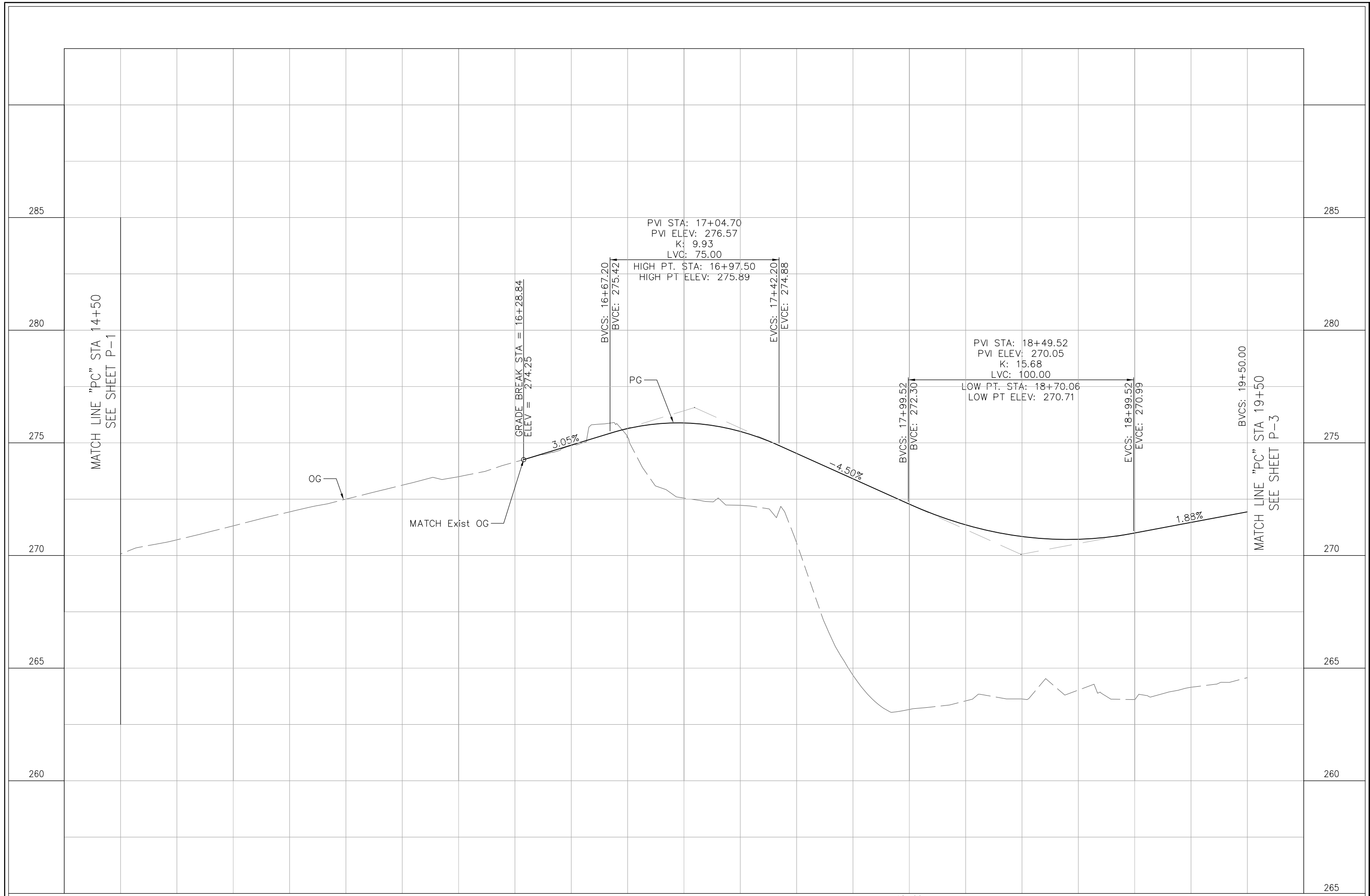
DESIGNED BY:  
 A. BEDAL  
 DRAWN BY:  
 A. BEDAL  
 CHECKED BY:  
 G. ARMSTRONG  
 APPROVED BY:  
 M. IMBRIANI  
 SCALE:  
 1"=20' H & 1"=2' V  
 DATE:  
 04-08-16  
 CITY SPECIFICATION NO.  
 SPEC NO  
 PLAN FILE NO. / LOCATION  
 (CITY USE)  
 SHEET NO.



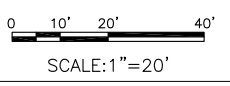


**RAILROAD SAFETY TRAIL - TAFT TO PEPPER**

**PROFILE**



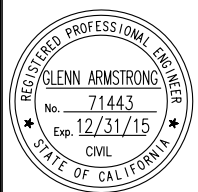
**PROFILE**  
 HORZ: 1"=20'  
 VERT: 1"=2'



**50% PS&E SUBMITTAL**  
**NOT FOR CONSTRUCTION**

PROJECT TITLE:

SHEET TITLE:



DESIGNED BY:  
A. BEDAL

DRAWN BY:  
A. BEDAL

CHECKED BY:  
G. ARMSTRONG

APPROVED BY:  
M. IMBRIANI

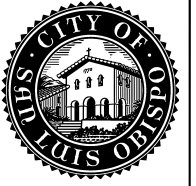
SCALE:  
1"=20' H & 1"=2' V

DATE:  
04-08-16

CITY SPECIFICATION NO.  
SPEC NO

PLAN FILE NO. / LOCATION  
(CITY USE)

SHEET NO.

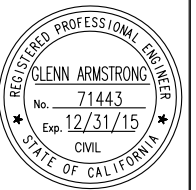


RAILROAD SAFETY TRAIL - TAFT TO PEPPER

PROFILE

PROJECT TITLE:

SHEET TITLE:



DESIGNED BY: A. BEDAL

DRAWN BY: A. BEDAL

CHECKED BY: G. ARMSTRONG

APPROVED BY: M. IMBRIANI

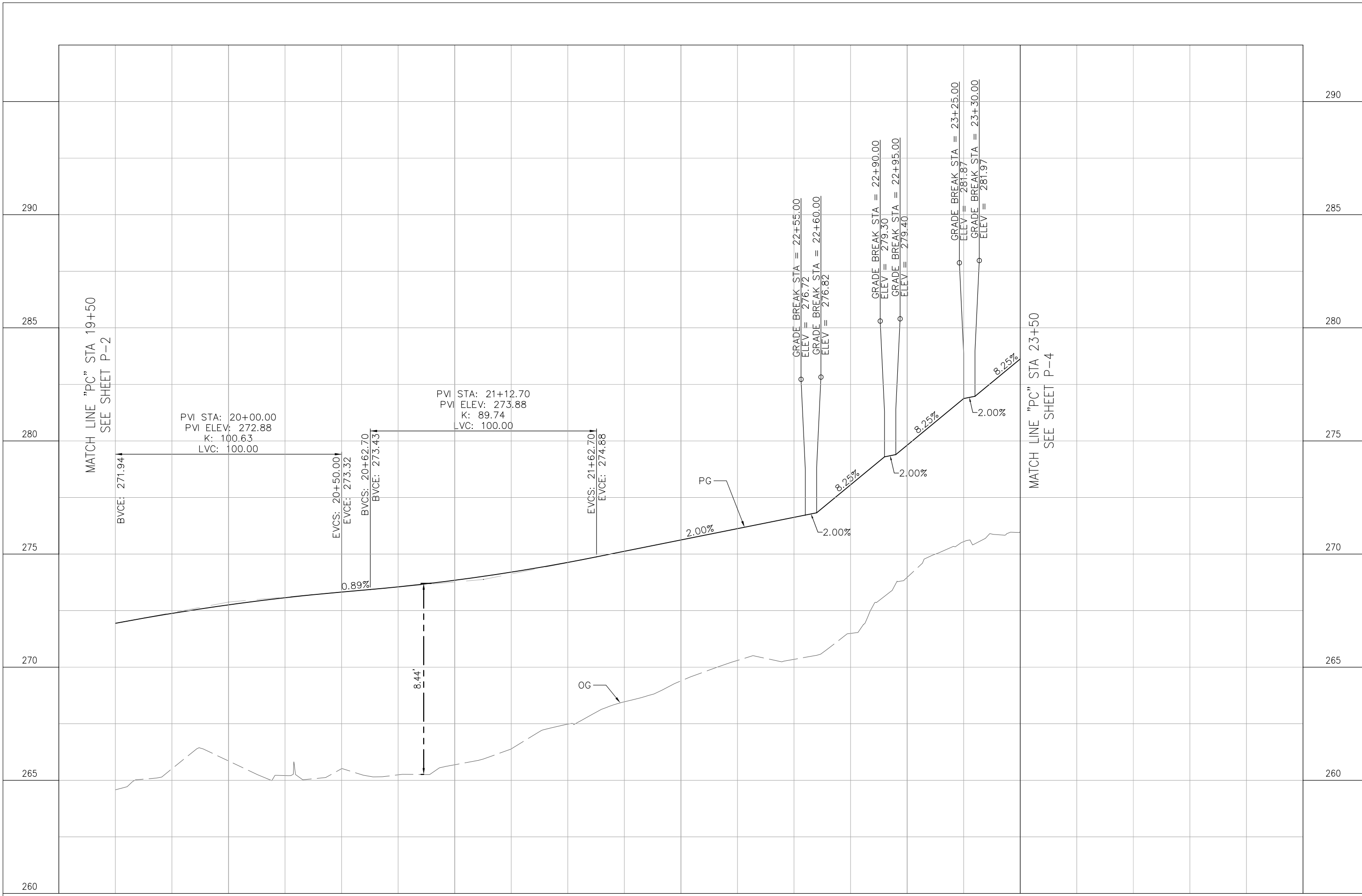
SCALE: 1"=20' H & 1"=2' V

DATE: 04-08-16

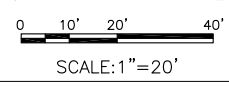
CITY SPECIFICATION NO. SPEC NO

PLAN FILE NO. / LOCATION (CITY USE)

SHEET NO.



**PROFILE**  
HORZ: 1"=20'  
VERT: 1"=2'



50% PS&E SUBMITTAL  
NOT FOR CONSTRUCTION

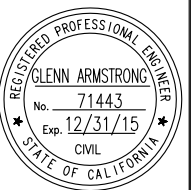


**RAILROAD SAFETY TRAIL - TAFT TO PEPPER**

**PROFILE**

PROJECT TITLE:

SHEET TITLE:



DESIGNED BY:  
A. BEDAL

DRAWN BY:  
A. BEDAL

CHECKED BY:  
G. ARMSTRONG

APPROVED BY:  
M. IMBRIANI

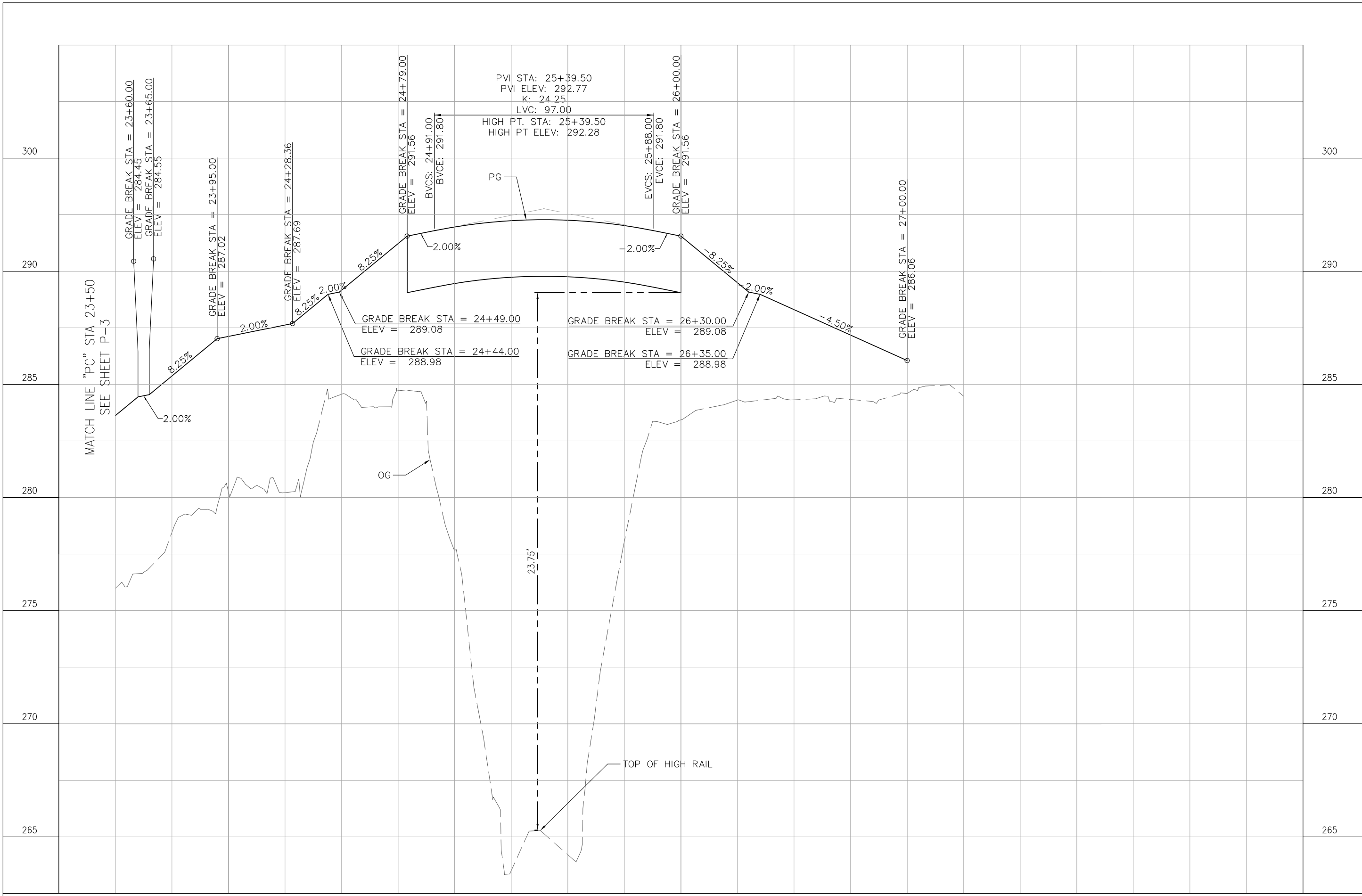
SCALE:  
1"=20' H & 1"=2' V

DATE:  
04-08-16

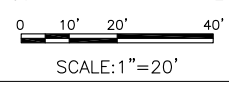
CITY SPECIFICATION NO.  
SPEC NO

PLAN FILE NO. / LOCATION  
(CITY USE)

SHEET NO.



**PROFILE**  
HORZ: 1"=20'  
VERT: 1"=2'



50% PS&E SUBMITTAL  
NOT FOR CONSTRUCTION