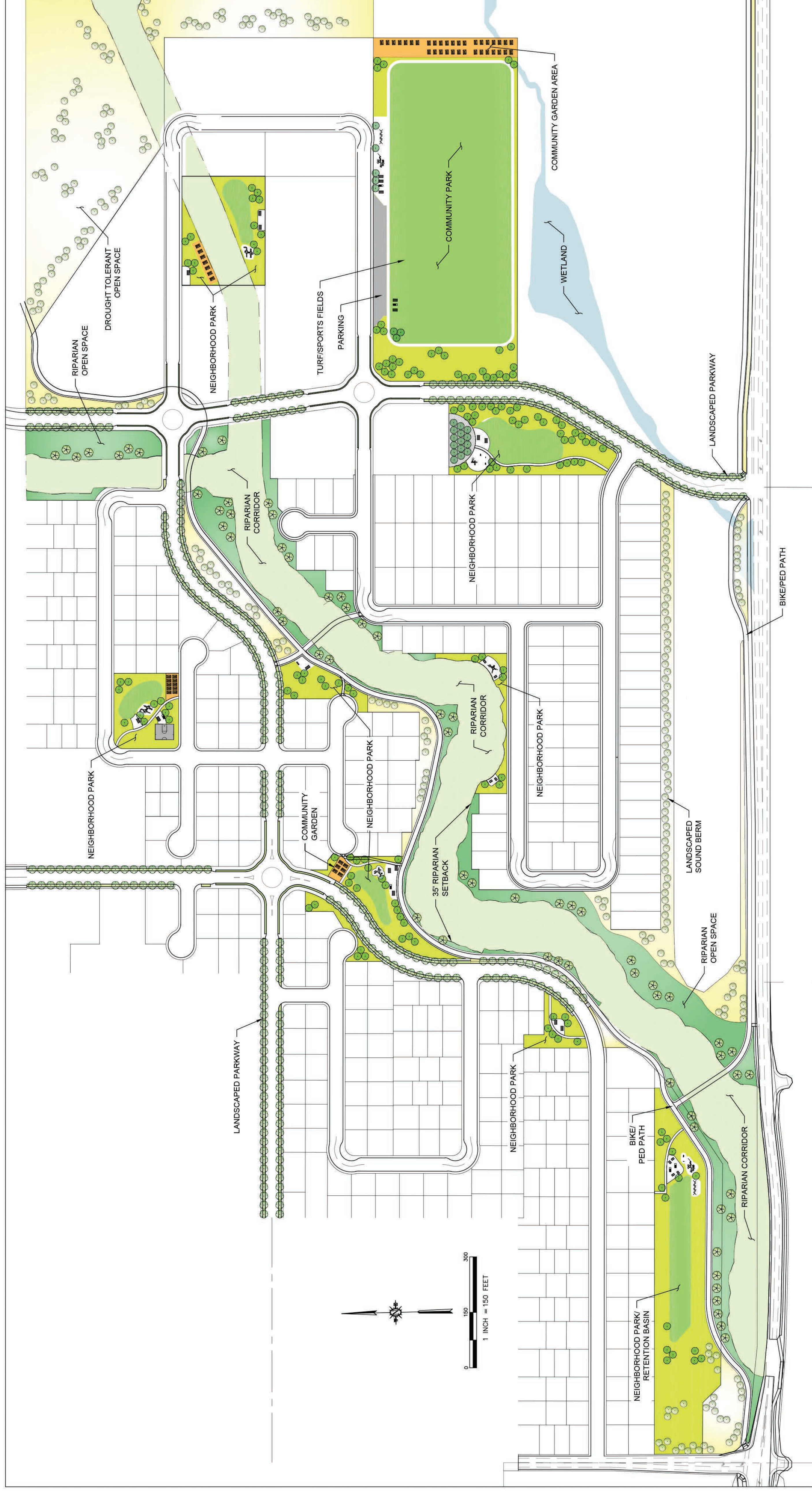


Appendix D

Avila Ranch Conceptual Landscape Plan







**PLANT PALETTE**

**DROUGHT TOLERANT OPEN SPACE TREES**

- Asclepias californica* / California Buckeye
- Lythodium floribundus* / Spicy Willow
- Myrica californica* / Pacific Wax Myrtle
- Populus fremontii* / Fremont Cottonwood
- Quercus agrifolia* / Coast Live Oak Multi-Trunk
- Umbellularia californica* / California Laurel

**PARK TREES**

- Asclepias californica* / California Buckeye
- Abutilon menziesii* / Pacific Madrone
- Chilopsis linearis* / Desert Willow
- Lythodium floribundus* / Spicy Willow
- Parkinsonia aculeata* / Mexican Palo Verde
- Pinus coulteri* / Coulter Pine
- Platanus chinensis* / Chinese Platane
- Prunus ilicifolia* / California Cherry
- Quercus agrifolia* / Coast Live Oak
- Searsia (Rhus) lanosa* / African Sumac
- Ulmus parvifolia* / Sempervirens / Chinese Evergreen Elm
- Ulmus x Frontier* / American Elm
- x Chitalpa taskentensis* / Chitalpa

**RIPIARIAN OPEN SPACE TREES**

- Juglans californica* / Southern California Black Walnut
- Platanus racemosa* / California Sycamore
- Populus fremontii* / Fremont Cottonwood

**PARKWAY TREES**

- Agave flexuosus* / Peppermint Tree
- Albizia julibrissin* / Silk Tree
- Abutilon x 'Marina'* / Abutilon Standard
- Brechynium populinum* / Bottle Tree
- Cassia leptophylla* / Gold Medallion Tree
- Catalpa speciosa* / Northern Catalpa
- Celtis occidentalis* / Western Redbud
- Lagerstroemia x 'Acoma'* / Crepe Myrtle
- Leptospermum laevigatum* / Australian Tea Tree
- Leptospermum x 'Dark Shadows'* / Tea Tree
- Platanus chinensis* / Chinese Platane
- Robinia x ambigua* / Locust
- Searsia (Rhus) lancea* / African Sumac
- Ulmus parvifolia* / Sempervirens / Chinese Evergreen Elm

**COMMUNITY ORCHARD**

- Citrus x aurantifolia* / Bears Lime / Bears Line
- Citrus x limon* / Eureka / Eureka Lemon
- Citrus x sinensis* / Valencia / Sweet Orange
- Malus domestica* / Apple
- Prunus americana* / Apricot
- Prunus persica* / Peach
- Pyrus communis* / Common Pear

**DROUGHT TOLERANT OPEN SPACE**

- Achillea millefolium* / Yarrow
- Achillea millefolium 'Paprika'* / Red Yarrow
- Baccharis pilularis consanguinea* / Poza Surf / Lowly Coyote Brush
- Baccharis pilularis* / Pigeon Point / Coyote Brush
- Eriogonum californicum* / Everett's Choice / California Fuchsia
- Eriogonum arborescens* / Santa Cruz Island Buckwheat
- Eriogonum umbellatum* / Sulflower Buckwheat
- Heteromeles arbutifolia* / Toyon
- Leymus condensatus* / Canyon Pinus / Native Blue Rye
- Muhlenbergia dubia* / Pine Muhly
- Muhlenbergia rigens* / Deer Grass
- Salvia spathacea* / Las Pitas / Hummingbird Sage
- Sida pulchra* / Purple Needle Grass
- Zauschneria californica* / California Fuchsia

**DROUGHT TOLERANT OPEN SPACE**

- Baccharis salicifolia* / Sticky Seepwillow
- Calycanthus occidentalis* / Spice Bush
- Carex praegracilis* / Slender Sedge
- Cornus californica* / Dogwood
- Cornus stolonifera* / Dogwood
- Frangula (Rhamnus) californica* / Coffee Berry
- Heteromeles arbutifolia* / Toyon
- Juncus patens* / California Gray Rush
- Ribes viburnifolium* / Evergreen Currant

**RIPIARIAN OPEN SPACE**

**DROUGHT TOLERANT PARKS**

- Asclepias tuberosa* / Butterfly Milkweed
- Baccharis pilularis* / Coyote Brush
- Calycanthus occidentalis* / Spice Bush
- Carex dumulicola* / Berkeley Sedge
- Ceanothus thyrsiflorus* / Blue Blossom
- Eriogonum fasciculatum* / Theodore Payne's Buckwheat
- Hesperaloe parviflora* / Brakelights™ / Brakelights Red Yucca
- Muhlenbergia dubia* / Pine Muhly
- Salvia leucantha* / Mexican Bush Sage
- Salvia spathacea* / Hummingbird Sage
- Salvia x 'Allen Chickering'* / Sage
- Senecio serpens* / Blue Chalksticks

**DROUGHT TOLERANT PARKWAYS**

- Aloe x 'Always Red'* / Aloe
- Actinostaphylos uva-ursi* / 'Pant Reyes' / Kinnikinnick
- Arctostaphylos x 'Pacific Mist'* / Pacific Mist Manzanilla
- Artemisia x 'Powis Castle'* / Powis Castle Artemisia
- Baccharis pilularis* / Dwarf Coyote Brush
- Beschomera yuccoides* / Amole
- Carex dumulicola* / Berkeley Sedge
- Ceanothus x 'Centennial'* / Centennial Ceanothus
- Ercalla californica* / California Ercalla
- Eriogonum fasciculatum* / Theodore Payne's Buckwheat
- Grevillea x 'Australora'* / Camerbury Gold / Grevillea
- Hesperaloe parviflora* / Red Yucca
- Salvia leucantha* / Mexican Bush Sage
- Salvia x 'Allen Chickering'* / Sage
- Teucrium chamaedrys* / Germander
- Zauschneria californica* / California Fuchsia

**COMMUNITY GARDEN SPACE**

- Cynodon dactylon* / Bermuda Grass

**TURF**

- Cynodon dactylon* / Bermuda Grass

**Cannon**  
 1050 Southwood Drive  
 San Luis Obispo, CA 93401  
 P 805-544-7407 F 805-544-5863

THESE DRAWINGS ARE INSTRUMENTS OF SERVICE AND ARE THE PROPERTY OF CANNON DESIGN GROUP. THEY SHALL NOT BE USED FOR ANY OTHER PROJECT WITHOUT THE WRITTEN PERMISSION OF CANNON DESIGN GROUP.

AVILA RANCH DEVELOPMENT  
 TRACT 3089 – VESTING TENTATIVE MAP  
 CONCEPTUAL LANDSCAPE PLAN

CITY OF SAN LUIS OBISPO, CA

DRAWN BY: JMD DATE: 2016-10-28 CA JOB NO: 110926  
 CHECKED BY: JCR SCALE: 1" = 150' SHEET: LI OF 39



