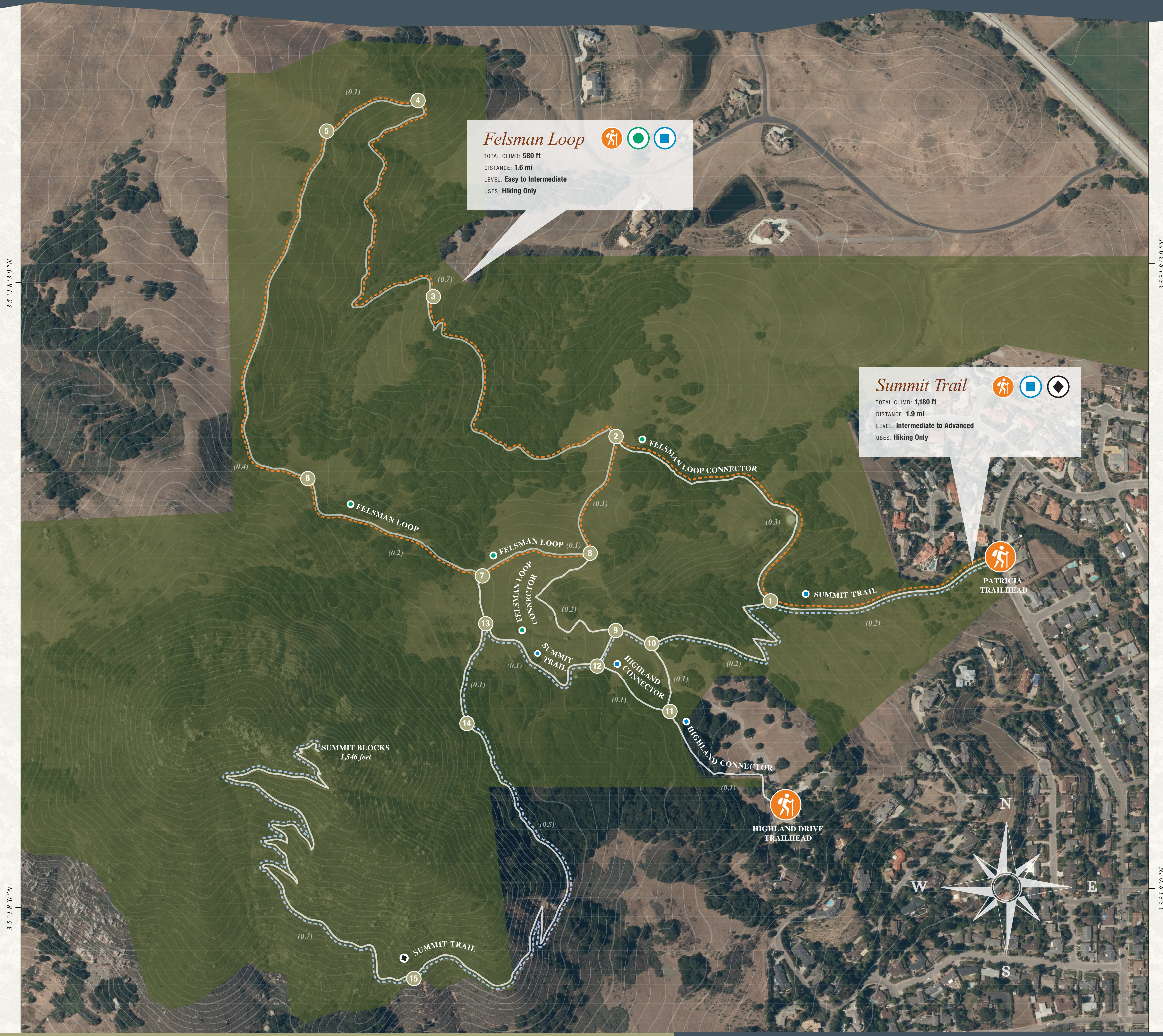


Bishop Peak

natural reserve



Please observe the following City of San Luis Obispo Open Space rules:

- All dogs must be on leash
 - Authorized motor vehicles only
 - No camping overnight
 - Obey trail closures when posted
 - Prohibited entry to any riparian area
 - Do not disturb natural resources
 - No smoking or fires
 - Alcohol is prohibited
 - Slacklining and paragliding are prohibited
 - Open Space closed from one hour after sunset until one hour before sunrise
 - Duty to care and control animals
 - Amplified noise/music is prohibited
 - Improper disposal of trash or litter is prohibited
 - Possession or discharge of weapons is prohibited
 - Travel on designated trails, no construction without authorization
 - No organized recreational groups or large gathering
 - Bicycles are NOT permitted in this Open Space
- For more information and downloadable trail maps visit Ranger Service page at www.slocity.org



Violators will be cited under San Luis Obispo Municipal Codes; Fines in excess of \$561

SUGGESTED ROUTES

- DISTANCE: 3.5 miles round trip
TOTAL CLIMB: 580 feet
USAGE: Hiking Only
LEVEL: Easy to Intermediate
- DISTANCE: 3.8 miles round trip
TOTAL CLIMB: 1,060 feet
USAGE: Hiking Only
LEVEL: Intermediate to Advanced

TRAIL LEVELS

- EASY:** Trail surface mostly smooth, few technical features or steep sections
- INTERMEDIATE:** Some sections with steep grades, rocks, loose gravel, or exposure
- ADVANCED:** Combinations of steep grades, rocks, loose gravel, exposure, or narrow sections

1 Circled numbers indicate trail intersections



Please respect private property and stay on trails.

In case of emergency dial 911. For Ranger Service call (805) 781-7302.

