

# APPENDIX L

---

## Agricultural Resources

*This Page Intentionally Left Blank.*

**Land Evaluation Worksheet**

**Land Capability Classification (LCC) and Storie Index Scores**

A	B	C	D	E	F	G	H
Soil Map Unit	Project Acres	Proportion of Project Area	LCC	LCC Rating	LCC Score	Storie Index	Storie Index Score
127	43.9	38.24%	IIs	80	30.59	60	22.94
130	16	13.94%	IIIe	70	9.76	60	8.36
131	7.3	6.36%	IVe	50	3.18	40	2.54
162	1.8	1.57%	IIIe	70	1.1	80	1.26
164	14.5	12.63%	VIe	20	2.53	60	7.58
183	21.8	18.99%	VIIe	10	1.9	20	3.8
197	3.7	3.22%	I	100	3.22	100	3.22
221	2.9	2.53%	VIII	0	0	0	0
300	2.9	2.53%	VIe	20	.51	60	1.52
<b>Totals</b>	114.8	(Must Sum to 1.0)			<b>LCC Total Score</b> 52.79	<b>Storie Index Total Score</b>	51.22

**Site Assessment Worksheet 1**

**Project Size Score**

	I	J	K
	LCC Class I - II	LCC Class III	LCC Class IV - VIII
	43.9		
		16	
			7.3
		1.8	
			14.5
			21.8
	3.7		
			2.9
			2.9
<b>Total Acres</b>	47.6	17.8	49.4
<b>Project Size Scores</b>	80	10	20
<b>Highest Project Score Size</b>	80		

**Site Assessment Worksheet 2. – Water Resources Availability**

A Project Proportion	B Water Source	C Proportion of Project Area	D Water Availability Score	E Weighted Availability Score (C x D)
1	Groundwater or recycled water	1	25	25
2				
3				
4				
5				
6				
		(Must Sum to 1.0)	<b>Total Water Resource Score</b>	25

**Site Assessment Worksheet 3.**  
**Surrounding Agricultural Land and Surrounding Protected Resource Land**

A	B	C	D	E	F	G
<b>Zone of Influence</b>						
Total Acres	Acres in Agriculture	Acres of Protected Resource Land	Percent in Agriculture (A/B)	Percent Protected Resource Land (A/C)	Surrounding Agricultural Land Score (From Table)	Surrounding Protected Resource Land Score (From Table)
			15%	60-64%	0	50

**NOTES**

**Final LESA Score Sheet**

**Calculation of the Final LESA Score:**

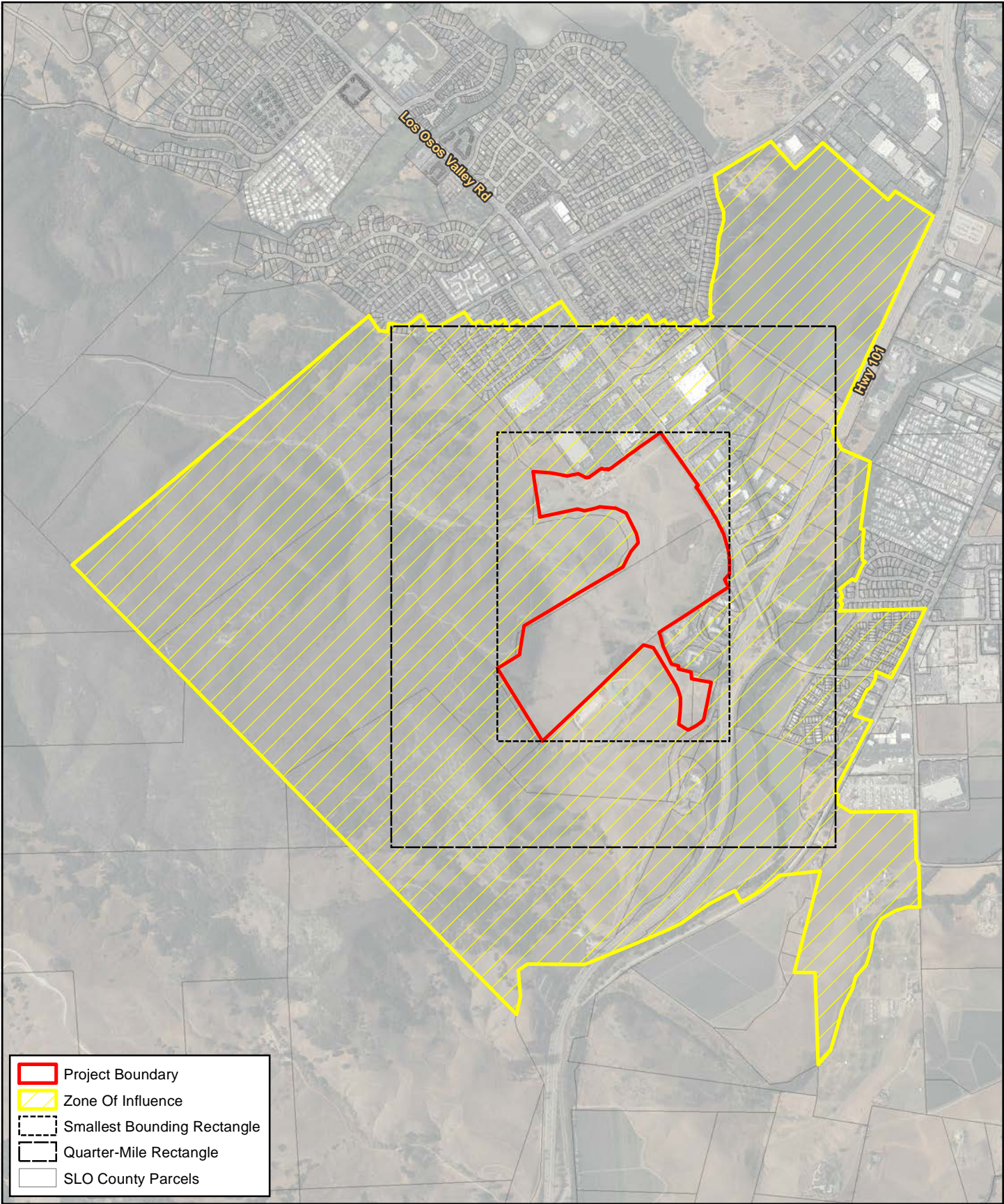
- (1) Multiply each factor score by the factor weight to determine the weighted score and enter Factor Scores column.
- (2) Sum the weighted factor scores for the LE factors to determine the total LE score for the project.
- (3) Sum the weighted factor scores for the SA factors to determine the total SA score for the project.
- (4) Sum the total LE and SA scores to determine the Final LESA Score for the project.

	<b>Factor Scores</b>	<b>Factor Weight</b>	<b>Weighted Factor Scores</b>
<b>LE Factors</b>			
Land Capability Classification	<1> 52.79	25%	13.2
Storie Index	<2> 51.22	25%	12.81
<i>LE Subtotal</i>		<b>50%</b>	<b>26.01</b>
<b>SA Factors</b>			
Project Size	<3> 80	15%	12
Water Resource Availability	<4> 25	15%	3.75
Surrounding Agricultural Land	<5> 0	15%	0
Protected Resource Land	<6> 50	5%	2.5
<i>SA Subtotal</i>		<b>50%</b>	<b>18.25</b>
<b>Final LESA Score</b>			<b>44.26</b>

For further information on the scoring thresholds under the California Agricultural LESA Model, consult Section 4 of the Instruction Manual.

## California LESA Model Scoring Thresholds

Total LESA Score	Scoring Decision
0 to 39 points	Not considered significant
40 to 59 points	Considered significant <u>only</u> if LE <u>and</u> SA subscores are each <u>greater</u> than or equal to 20 points
60 to 79 points	Considered significant <u>unless</u> either LE <u>or</u> SA subscore is <u>less</u> than 20 points
80 to 100 points	Considered significant



- Project Boundary
- Zone Of Influence
- Smallest Bounding Rectangle
- Quarter-Mile Rectangle
- SLO County Parcels

0 500 1,000 2,000 Feet



1:20,000

Basemap by County of San Luis Obispo, 2014.

### Zone of Influence Map