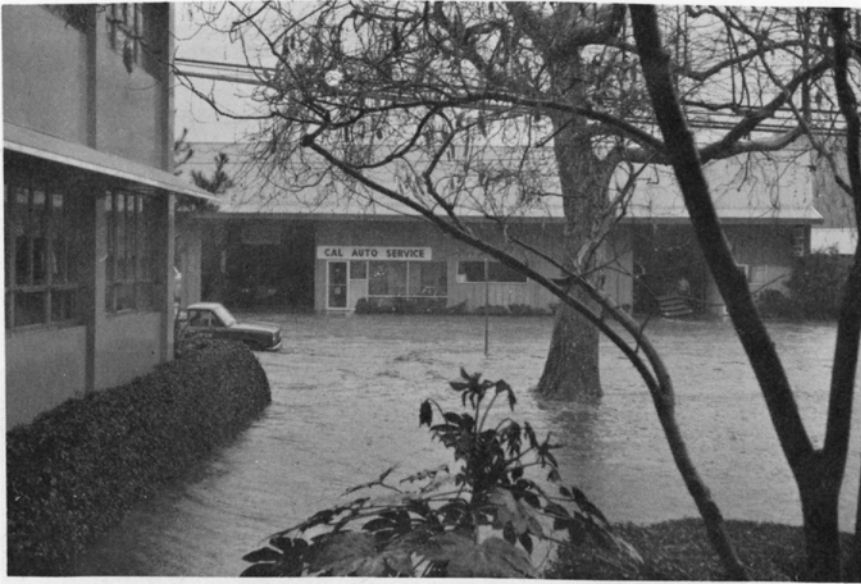




U.S. Highway 101 becomes impassable near the confluence of San Luis Obispo Creek and Prefumo Creek.



Motorists abandoned vehicles along Higuera Street.



Floodwaters along Higuera Street, damaged commercial establishments.



Vehicles in the Division of Highways parking lot are submerged by floodwaters.



Cleanup operations by the city and volunteers commenced immediately after the storm.



Floodwaters overtop San Luis Obispo Creek downstream from Madonna Road bridge.



U.S. Highway 101 became impassable to motorists.



Trees and brush were uprooted by the erosive velocity of floodwaters within the creek.



Erosion of land and damaged patios along Stenner Creek.



Floodwaters inundated this house on Broad Street and Lincoln Avenue.



Residents in the Laguna Lake area resort to motorboats as a means of transportation.



Flood victims take to the rowboat along Oceanaire Drive as floodwaters 3 feet deep inundated the Laguna Lake area.



Bridge crossing Prefumo Creek indicates results of damages caused by floodwaters.



Silt deposit was a major problem along Prefumo Creek, as is evident from view of this bridge.



Erosion along Prefumo Creek caused damage to this property.





Floodwaters from an unnamed creek in the City of Morro Bay inundated this home west of State Highway 1.