

The underpass on Johnson Avenue was blocked off for hours after it filled to the brim with water.



Almost total destruction was the result of flooding in the south section of the city, as at this mobile home park.

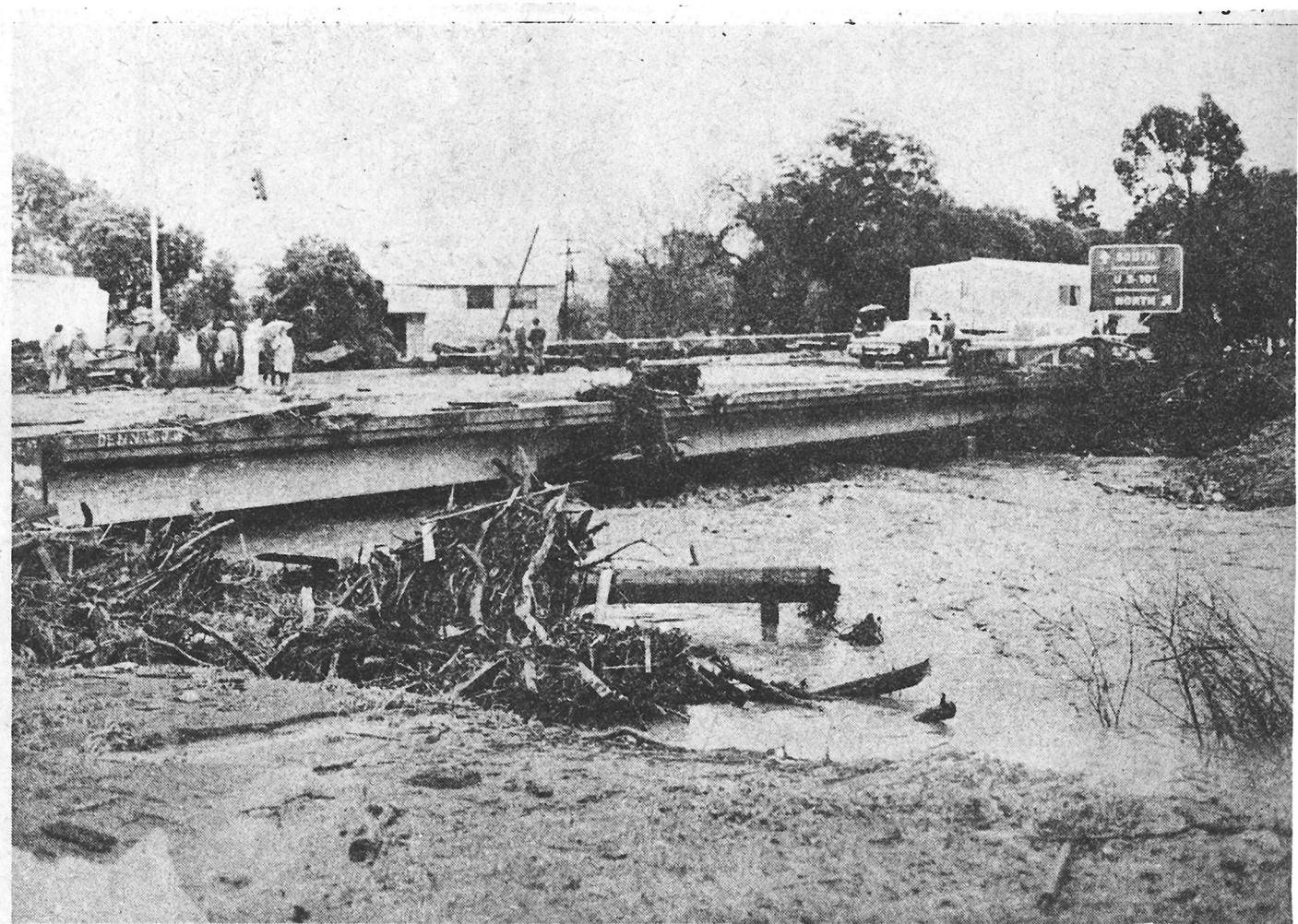


Photo by Chris Bagdikian

The bridge at the intersection of Marsh, Higuera and Route 101 was closed due to high water and debris. The guard rails were torn off the bridge and a mobile home was shoved across the bridge, at far right.



Boats were pressed into service to rescue families in the Laguna Lake section of San Luis Obispo, the community hit hardest by flooding.



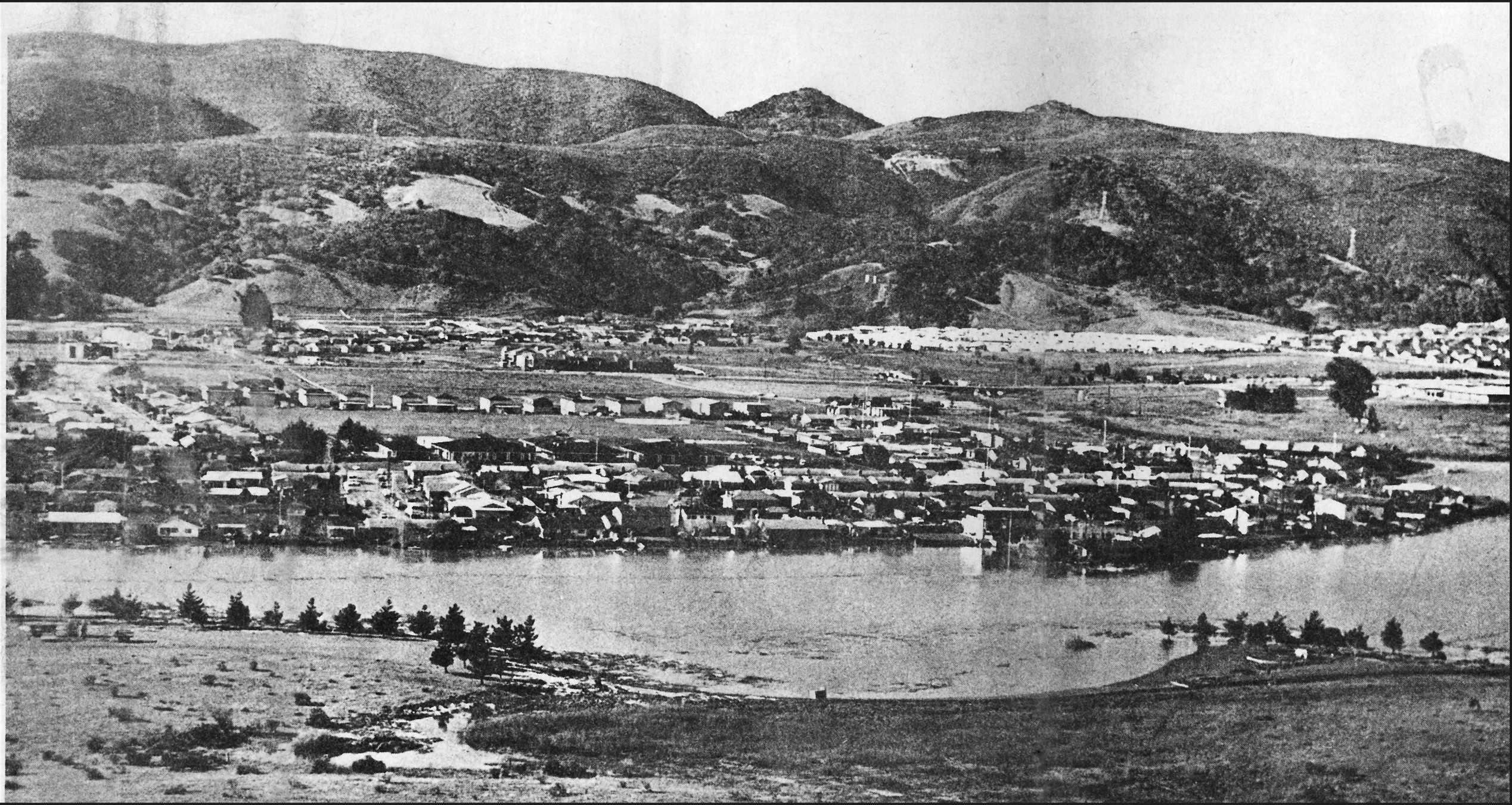
George Acosta scoops and pushes mud and debris away from ADX Drug at 237 Higuera St. on Saturday, two days after floodwaters barreled down the thoroughfare.



Navy reservists move a dumpster off mucky Higuera Street near Marsh Street intersection as part of the laborious effort to clean up the area after the flood.

**This was the scene after normally calm Laguna Lake began to recede after last week's heavy flooding. Many of the homes on the far side of the lake were inundated as the lake became a sprawling river during heavy rains that fell on the area.**

Photo by Richard Palmer





Numerous boats worked in the Laguna Lake area to rescue residents who were stranded in their homes by rising waters.