

**ATP Tier 1 Project List**

Corridor	User	Type	ID	Location	Cross Street A	Cross Street B	Miles	% Ridership Potential	Notes	Notable Constraints
	Ped	Crossing Improvement (Major)	J-31	Los Osos Valley Rd	Diablo Dr			17	Potential hybrid beacon	
	Ped	Crossing Improvement (Major)	J-2	Los Osos Valley Rd	Prefumo Canyon Rd			17	Potential hybrid beacon	
	Ped	Crossing Improvement (Minor)	J-1	Los Osos Valley Rd	Royal Way			17	Explore adding crosswalk on south leg	
	Ped/Bike	Crossing Improvement (Major)	J-33	Los Osos Valley Rd	Madonna Rd			17	Potential protected intersection or bike/ped scramble phase	Requires right-of-way
	Ped/Bike	Crossing Improvement (Major)	J-8	Los Osos Valley Rd	Froom Ranch Way			17	Planned protected intersection	
	Ped	Crossing Improvement (Major)	J-25	Los Osos Valley Rd	Auto Park Way			17	Planned protected intersection	
	Ped	Crossing Improvement (Major)	J-9	Los Osos Valley Rd	Calle Joaquin			17	Potential bike/ped scramble	Requires Caltrans coordination. May require right-of-way
	Ped/Bike	Grade-Separated Crossing	I-42	Los Osos Valley Rd	US 101 NB			17	Potential ped/bike tunnel	Requires Caltrans coordination, right-of-way, and jurisdictional permits for work near creek.
Madonna Road		Shared-Use Path	15	Madonna Rd	Madonna Inn	Oceanaire Dr	0.6	20		
		Protected Bike Lane	225	Madonna Rd	Madonna Inn	Higuera St	0.42	20		Requires Caltrans coordination
		Crossing Improvement (Major)	J-30	Madonna Rd	Madonna Inn			20	Potential bike/ped scramble	Requires Caltrans coordination
		Crossing Improvement (Major)	J-61	Madonna Rd	Between Oceanaire & Dalidio			20	Planned hybrid beacon at San Luis Ranch multifamily entry	
Oceanaire Neighborhood Greenway	Bike	Shared-Use Path	81, 5	Froom Ranch Way	Los Osos Valley Rd	Oceanaire Dr	0.23	20		
	Ped/Bike	Neighborhood Greenway	214	Oceanaire Dr	Froom Ranch Way	Atascadero St	0.41	20		
	Ped/Bike	Neighborhood Greenway	215	Atascadero St	Oceanaire Dr	Galleon Way	0.28	20		
	Ped/Bike	Neighborhood Greenway	220	Galleon Way	Atascadero St	Oceanaire Dr	0.31	20		
	Bike	Protected Bike Lane	218	Oceanaire Dr	Galleon Way	Los Osos Valley Rd	0.16	20	Two-way protected bikeway linking to LOVR Safe Routes to School Path	Requires parking removal
	Ped/Bike	Crossing Improvement (Major)	J-62	Froom Ranch Way	Oceanaire Dr			20	Planned hybrid beacon	Requires focused feasibility and access analysis
	Ped/Bike	Crossing Improvement (Major)	J-32	Madonna Rd	Oceanaire Dr			20	Potential bike/ped scramble	Requires focused feasibility and access analysis
South Street	Bike	Protected Bike Lane	35	South St	Higuera St	Broad St	0.78	20		May require parking removal or modifying median
	Ped/Bike	Crossing Improvement (Major)	J-24	South St	King St			20	Potential hybrid beacon or RRFB	
	Ped	Crossing Improvement (Minor)	J-48	South St	Meadow St			20	Potential RRFB	
Mill Street	Ped/Bike	Neighborhood Greenway	260	Mill St	Chorro St	Pepper St	0.45	36	May be candidate for advisory bike lanes	
Morro Street	Ped/Bike	Neighborhood Greenway	235	Morro St	Marsh St	Mill St	0.27	36		
Railroad Safety Trail	Ped/Bike	Shared-Use Path	169	++	Tiburon Way	Orcutt Rd	0.5	36		May require UPRR coordination & right-of-way. Requires widening of existing Bullock Lane culvert, potential jurisdictional permits required for work near creek.
	Bike	Protected Bike Lane	259	Pepper St	Marsh St	Phillips Ln	0.32	36		
	Ped/Bike	Shared-Use Path	75, 76		Phillips Ln	Taft St	0.27	36		
	Ped/Bike	Grade-Separated Crossing	I-24	++	Pepper St	Phillips Ln	0.04	36	Planned ped/bike bridge.	
	Ped/Bike	Grade-Separated Crossing	I-3		Tank Farm Road			36	Ped/bike bridge over Tank Farm Rd.	May require UPRR coordination.
	Ped/Bike	Grade-Separated Crossing	I-36		Industrial Way			36	Ped/bike bridge over UPRR tracks	Requires UPRR coordination & right-of-way

### ATP Tier 1 Project List

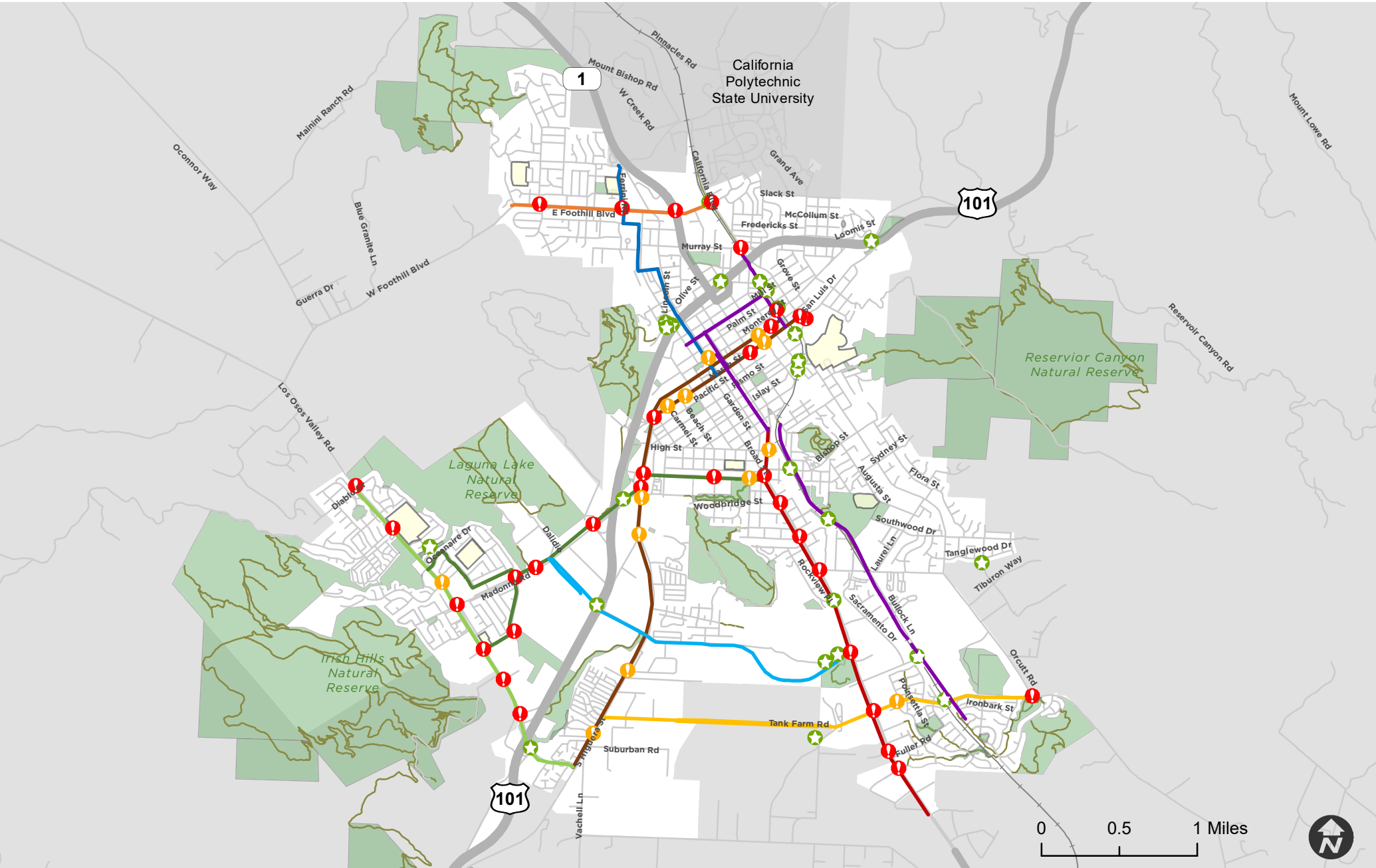
Corridor	User	Type	ID	Location	Cross Street A	Cross Street B	Miles	% Ridership Potential	Notes	Notable Constraints
Anholm Neighborhood Greenway	Bike/Ped	Neighborhood Greenway	278	Chorro St	Marsh St	Palm St	0.19	19		
	Bike	Protected Bike Lane	200	Chorro St	Palm St	Mission St	0.59	19	Two-way protected bikeway	Requires parking removal
	Ped/Bike	Neighborhood Greenway	199	Mission St	Broad St	Chorro St	0.13	19		
	Bike	Protected Bike Lane	197	Broad St (SB)	Mission St	Ramona Dr	0.3	19		Requires parking removal
	Bike/Ped	Neighborhood Greenway	236	Broad St (NB)	Mission St	Ramona Dr	0.3	19		
	Bike	Protected Bike Lane	197	Ramona Dr	Broad St	Palomar Ave	0.1	19	Two-way protected bikeway	Requires parking removal
	Ped/Bike	Shared-Use Path	196	++	Ramona Dr	Foothill Blvd	0.11	19		
	Ped/Bike	Neighborhood Greenway	221	Ferrini Rd	Foothill Blvd	Highland Dr	0.3	19		
Ped	Crossing Improvement (Minor)	J-26		Chorro St	Monterey St			19	Potential pedestrian scramble	
Broad Street/Santa Barbara Corridor	Bike	Protected Bike Lane	37	Broad St	Farmhouse Ln	South St	2.42	26		May required some parking removal Orcutt to South St.
	Ped	Crossing Improvement (Major)	J-43	Broad St	Aerovista Pl			26	Potential signal/roundabout/hybrid beacon. Alternate solution is mid-block crossing @ Fuller Rd.	
	Ped	Crossing Improvement (Major)	J-44	Broad St	Fiero Lane			26	Potential signal/roundabout/hybrid beacon. Alternate solution is mid-block crossing @ Fuller Rd.	
	Ped/Bike	Crossing Improvement (Major)	J-39	Broad St	Tank Farm Road			26	Potential protected intersection	
	Ped/Bike	Crossing Improvement (Major)	J-74	Broad St	Rockview			26	Potential signal/hybrid beacon.	
	Ped/Bike	Crossing Improvement (Major)	J-46	Broad St	Orcutt Road			26	Potential protected intersection or bike/ped scramble phase	
	Ped/Bike	Crossing Improvement (Major)	J-20	Broad St	Lawrence Dr			26	Potential signal/hybrid beacon	
	Ped/Bike	Crossing Improvement (Major)	J-21	Broad St	Woodbridge St			26	Potential signal/hybrid beacon	
	Ped/Bike	Crossing Improvement (Major)	J-15	Broad St	South St			26	Potential protected intersection or bike/ped scramble phase	
	Bike	Protected Bike Lane	228	Santa Barbara St	Broad St	Upham St	0.32	26		
Ped/Bike	Crossing Improvement (Minor)	J-57		Santa Barbara St	High St			26	Potential median, RRFB. Alternate solution is crossing mid-block at staircase to Railroad Square parking lot	
Foothill Blvd	Bike	Protected Bike Lane	14	Foothill Blvd	Los Cerros Dr	California Blvd	1.28	11		
	Ped/Bike	Crossing Improvement (Major)	J-4	Foothill Blvd	Patricia Dr			11	Potential to expand signalization to Foothill/Los Cerros.	
	Ped/Bike	Crossing Improvement (Major)	J-3	Foothill Blvd	Ferrini Rd			11	Hybrid beacon	
	Ped/Bike	Crossing Improvement (Major)	J-6	Foothill Blvd	Santa Rosa St			11	Potential protected intersection or bike/ped scramble phase	Requires Caltrans coordination. May require right-of-way
	Ped/Bike	Crossing Improvement (Major)	J-7	Foothill Blvd	California Blvd			11	Potential protected intersection or ped/bike scramble	Requires UPRR coordination & right-of-way

**ATP Tier 1 Project List**

Corridor	User	Type	ID	Location	Cross Street A	Cross Street B	Miles	% Ridership Potential	Notes	Notable Constraints
	Ped/Bike	Grade-Separated Crossing	I-29	Foothill Blvd	UPRR			11	Potential ped/bike bridge	Requires UPRR coordination & right-of-way
Higuera Street	Bike	Protected Bike Lane	242,36,26	Higuera St	CITY LIMIT	Pepper St	3.82	40		May require auto lane reduction and/or widening & right-of-way
	Ped/Bike	Crossing Improvement (Minor)	J-50	Higuera St	Las Praderas Dr			40	Potential RRFB, median refuge	
	Ped/Bike	Crossing Improvement (Minor)	J-49	Higuera St	Granada Dr			40	Explore adding crosswalk on south leg	
	Ped/Bike	Crossing Improvement (Minor)	J-41	Higuera St	Elks Ln			40	Potential RRFB, median refuge	
	Ped/Bike	Crossing Improvement (Minor)	J-47	Higuera St	Bridge St			40	Potential RRFB, median refuge. Future protected intersection/roundabout with ultimate realignment of Madonna/Higuera	Ultimate configuration requires redevelopment of Caltrans property
	Ped/Bike	Crossing Improvement (Major)	J-40	Higuera St	Madonna Rd			40	Potential protected intersection or ped/bike scramble	May require right-of-way
	Ped/Bike	Crossing Improvement (Major)	J-18	Higuera St	South St			40	Potential protected intersection or ped/bike scramble	May require right-of-way
	Ped/Bike	Crossing Improvement (Major)	J-22	Higuera St	Marsh St			40	Potential ped/bike scramble or future roundabout	May require Caltrans coordination
	Ped/Bike	Crossing Improvement (Major)	J-73	Higuera St	Court St			40		
	Ped/Bike	Crossing Improvement (Minor)	J-28	Higuera St	Toro St			40	Potential RRFB, median refuge/diverter	
	Ped/Bike	Crossing Improvement (Major)	J-60	Higuera St	Johnson St				Potential hybrid beacon	
Marsh Street	Bike	Shared-Use Path	25	Marsh St	Madonna Inn Bike Path	Higuera St	0.21	40	Alternate design strategy may include widening existing shared-use path	Requires Caltrans coordination. May require right-of-way
	Bike	Protected Bike Lane	27	Marsh St	Higuera St	California Blvd	1.14	40		Requires auto lane reduction or partial street parking removal
	Bike	Protected Bike Lane	20	California Blvd	Marsh St	San Luis Dr	0.04	40		May require auto lane reduction or deferral until unless roadway is widened with future replacement of existing bridge
	Ped/Bike	Crossing Improvement (Major)	J-29	Marsh St	Santa Rosa St			40	Potential bike/ped scramble	
	Ped/Bike	Crossing Improvement (Minor)	J-72	Marsh St	Carmel			40	Potential RRFB	
	Ped/Bike	Crossing Improvement (Minor)	J-71	Marsh St	Beach			40	Potential RRFB	
	Ped	Crossing Improvement (Minor)	J-56	Marsh St	Toro St			40	Potential RRFB, median refuge/diverter	
	Ped	Crossing Improvement (Major)	J-37	Marsh St	California Blvd			40	Potential bike/ped scramble	
Ped/Bike	Crossing Improvement (Major)	J-11	California Blvd	San Luis Dr			40	Potential signal/compact roundabout	May require right-of-way	
Los Osos Valley Road	Bike	Protected Bike Lane	213,206,224,34	Los Osos Valley Rd	Diablo Dr	S Higuera St	2.36	17		Requires some parking removal and NB auto lane reduction between Madonna and Oceanaire.
	Ped/Bike	Shared-Use Path	210	Los Osos Valley Rd	Descanso St	Laguna Ln	0.27	17		May require consolidating NB protected bike lane with sidewalk-level shared-use path

ATP Tier 1 Project List										
Corridor	User	Type	ID	Location	Cross Street A	Cross Street B	Miles	% Ridership Potential	Notes	Notable Constraints
	Ped/Bike	Grade-Separated Crossing	I-4		Lawrence Dr or Francis			36	Ped/bike bridge over UPRR tracks	Requires UPRR coordination & right-of-way
	Ped/Bike	Crossing Improvement (Major)	J-17	Pepper St	Monterey St			36	Long-term plan is a ped/bike bridge. Interim solution may include RRFB & median refuge/diverter	Requires UPRR coordination & right-of-way
	Ped/Bike	Crossing Improvement (Major)	J-64	California Blvd	Taft St			36	Planned roundabout	
Prado/Dalidio	Bike	Protected Bike Lane	261	Dalidio/Prado	Madonna Rd	Elks Ln	0.47	17	South side of Prado (Madonna to Froom) will be a shared-use path	
	Bike	Protected Bike Lane	261	Prado Rd	Elks Ln	Serra Meadows Rd	0.71	17		
	Bike	Bike Lane	104	Prado Rd	Serra Meadows Rd	Broad St	1.03	17		
	Ped/Bike	Shared-Use Path	105	Prado Rd (North Side)	Serra Meadows Rd	Broad St	1.09	17		
	Ped/Bike	Shared-Use Path	106	Prado Rd (South Side)	Serra Meadows Rd	Broad St	0.86	17		
	Ped/Bike	Shared-Use Path	127	Dalidio Dr	Madonna Rd	-	0.3	17		
	Ped/Bike	Crossing Improvement (Major)	I-2	Prado Rd	Damon-Garcia Sports Field			17	Potential ped/bike undercrossing	
Tank Farm Road	Bike	Protected Bike Lane	33	Tank Farm Rd	S. Higuera St	Horizon Ln	0.46	11		
	Ped/Bike	Shared-Use Path	64,157,267	Tank Farm Rd (North Side)	Horizon Ln	Santa Fe Rd	0.94	11		Requires roadway widening and right-of-way
	Bike	Protected Bike Lane	31, 32	Tank Farm Rd	Santa Fe Rd	Orcutt Rd	1.33	11		May required auto lane reduction.
	Ped	Crossing Improvement (Minor)	J-13	Tank Farm Rd	Poinsettia St			11	Potential RRFB & median refuge	
	Ped/Bike	Crossing Improvement (Major)	J-65	Tank Farm Rd	Orcutt Road			11	Planned roundabout	





# San Luis Obispo

## Tier 1 Bicycle and Pedestrian Project Corridors

- Anholm Neighborhood Greenway
- Broad St / Santa Barbara Corridor
- Foothill Blvd
- Higuera St/Marsh St
- Los Osos Valley Rd
- Madonna Rd/Oceanaire NG/South St
- Mill/Morro/Railroad Safety Trail
- Prado/Dilidio
- Tank Farm Rd

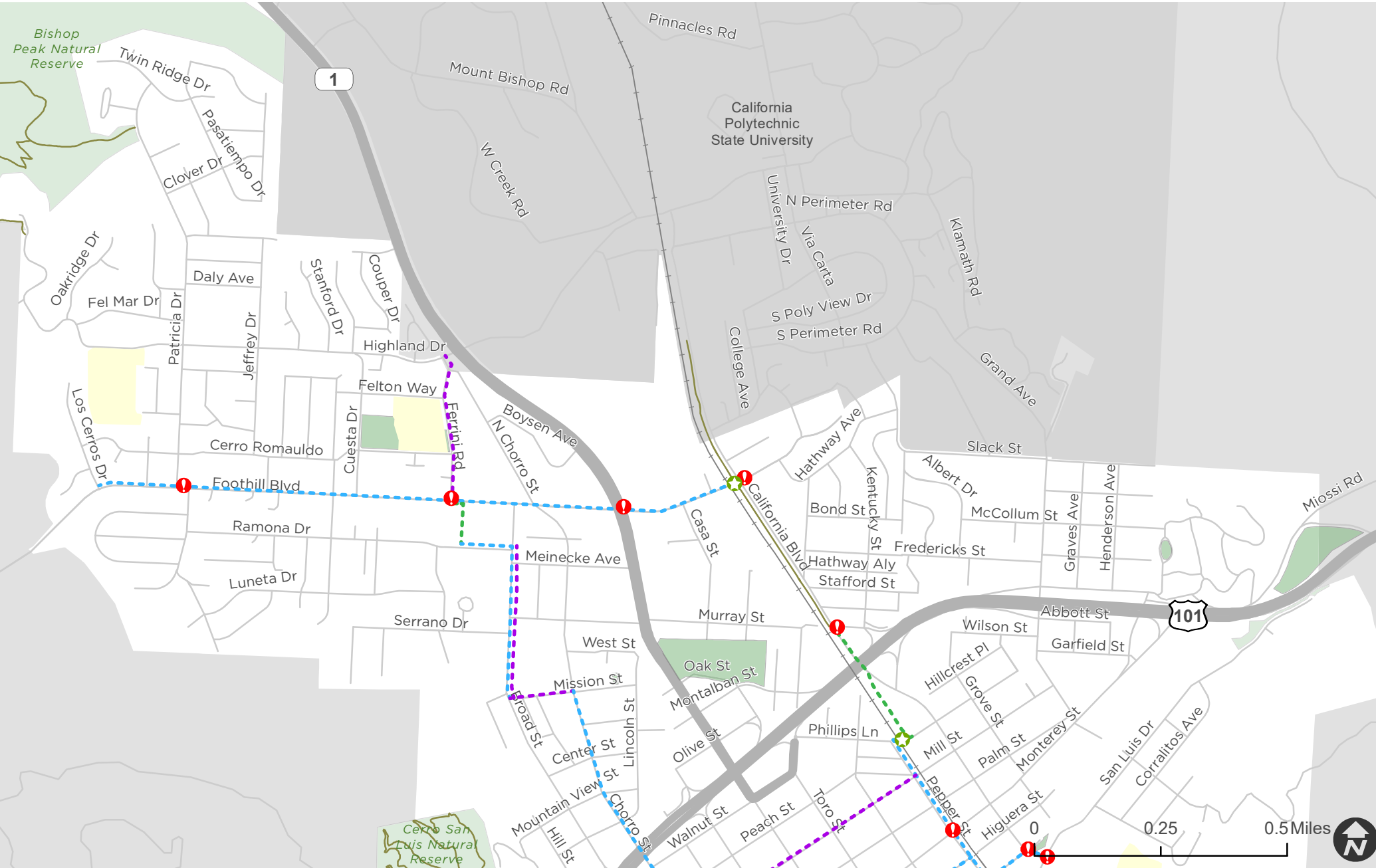
- Proposed Bicycle/Pedestrian Major Crossing Improvement
- Proposed Bicycle/Pedestrian Minor Crossing Improvement
- Proposed Bicycle/Pedestrian Grade-Separated Crossing

- School
- Park or Open Space
- Rail
- Trails

Sources:  
City of San Luis Obispo

*\*See Ch. 5 for proposed bikeway and crossing types.*





# San Luis Obispo

## Tier 1 Bicycle and Pedestrian Project Corridors - North

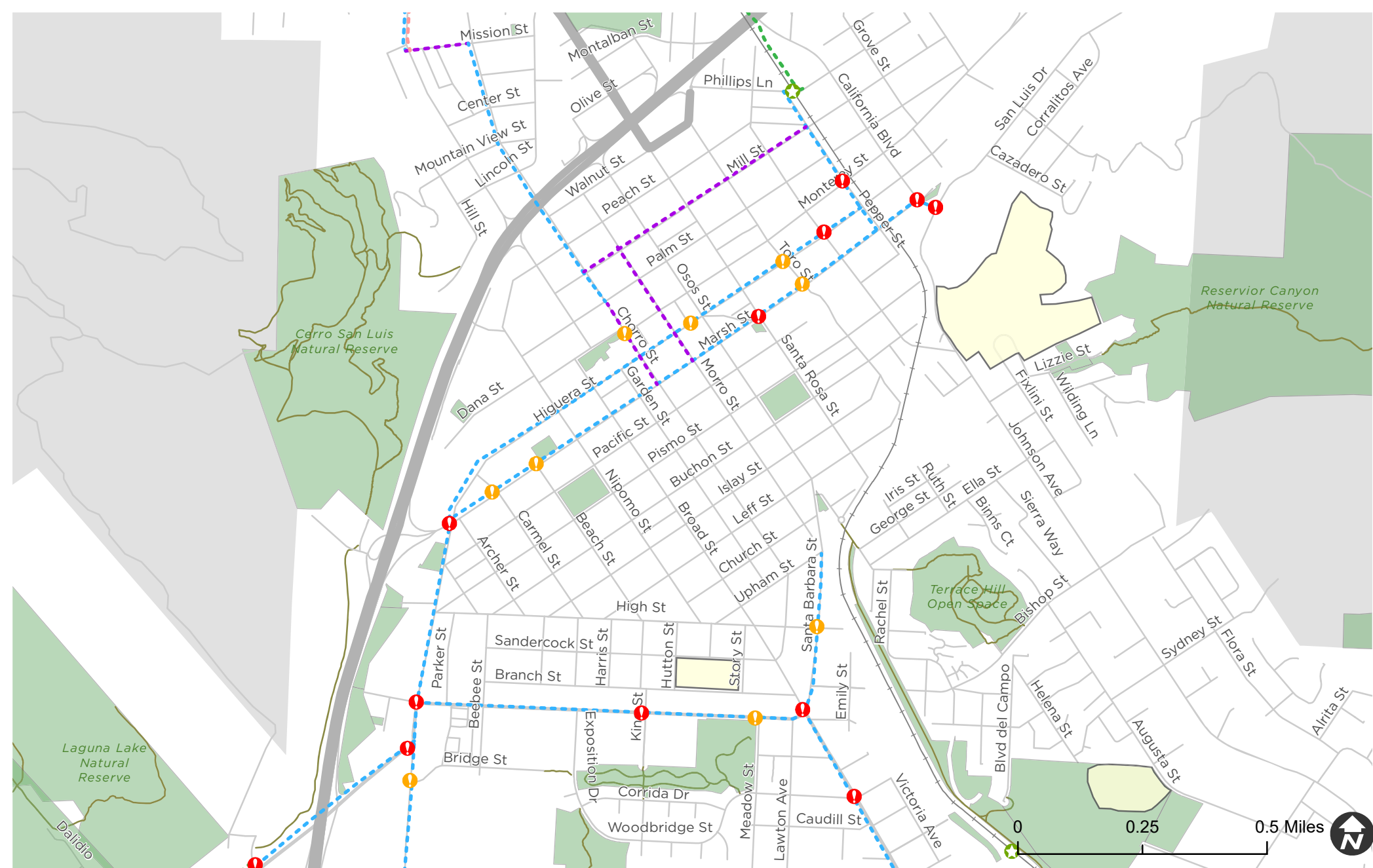
- - - Shared-Use Path
- - - Protected Bicycle Lane
- - - Bicycle Lane
- - - Neighborhood Greenway

- ! Proposed Bicycle/Pedestrian Major Crossing Improvement
- ★ Proposed Bicycle/Pedestrian Grade-Separated Crossing

- School
- Park or Open Space
- Rail
- Trails

Sources:  
City of San Luis Obispo





Sources:  
City of San Luis Obispo

# San Luis Obispo

## Tier 1 Bicycle and Pedestrian Project Corridors - Central

- - - Shared-Use Path
- - - Protected Bicycle Lane
- - - Bicycle Lane
- - - Neighborhood Greenway
- ! Proposed Bicycle/Pedestrian Major Crossing Improvement
- ! Proposed Bicycle/Pedestrian Minor Crossing Improvement
- \* Proposed Bicycle/Pedestrian Grade-Separated Crossing
- School
- Park or Open Space
- Rail
- Trails





Sources:  
City of San Luis Obispo

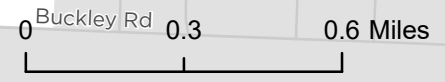
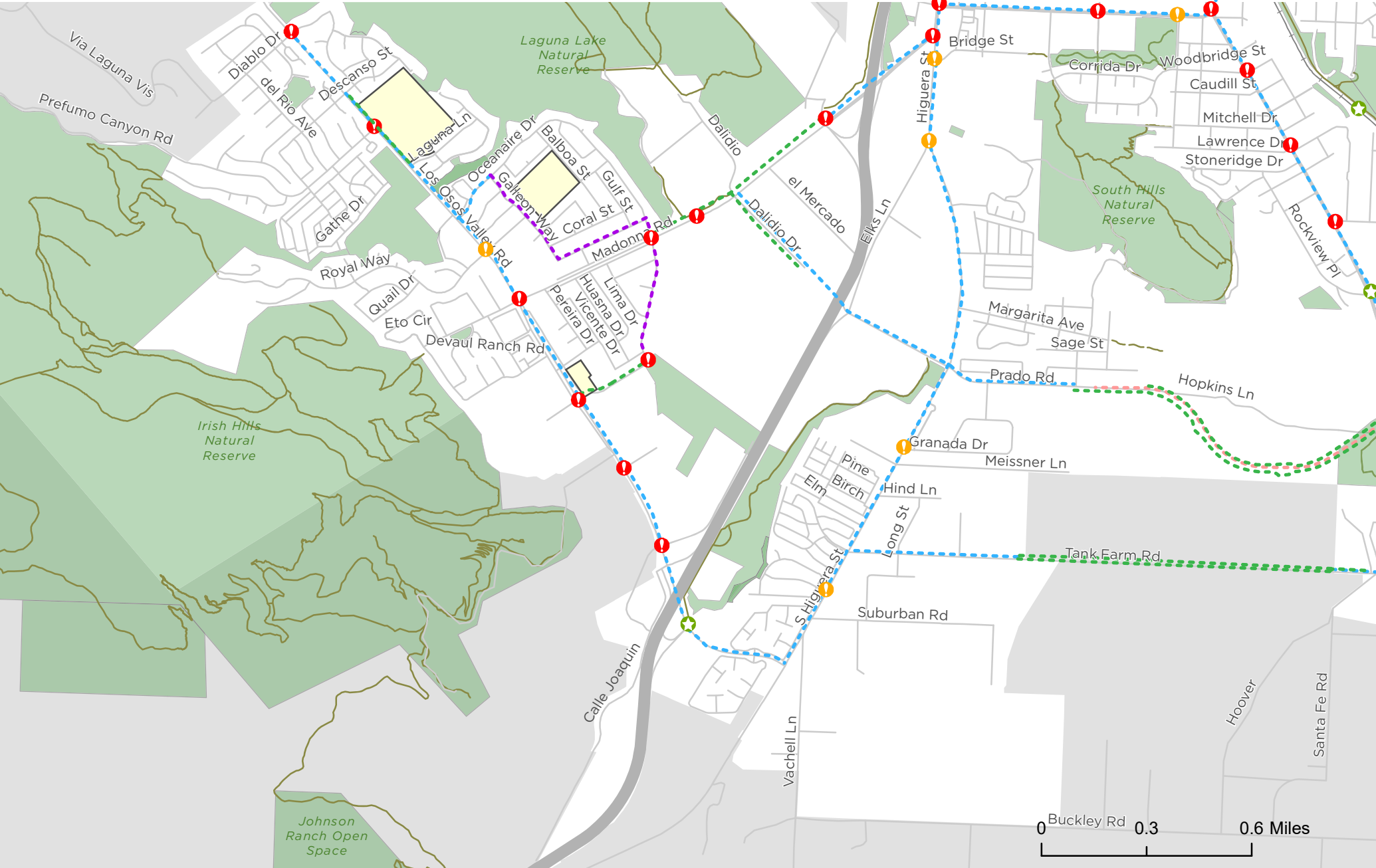
# San Luis Obispo

## Tier 1 Bicycle and Pedestrian Project Corridors - Southeast

- - - Shared-Use Path
- - - Protected Bicycle Lane
- - - Bicycle Lane
- - - Neighborhood Greenway
- ! Proposed Bicycle/Pedestrian Major Crossing Improvement
- ! Proposed Bicycle/Pedestrian Minor Crossing Improvement
- ★ Proposed Bicycle/Pedestrian Grade-Separated Crossing
- School
- Park or Open Space
- Rail
- Trails







# San Luis Obispo

## Tier 1 Bicycle and Pedestrian Project Corridors - Southwest

Sources:  
City of San Luis Obispo

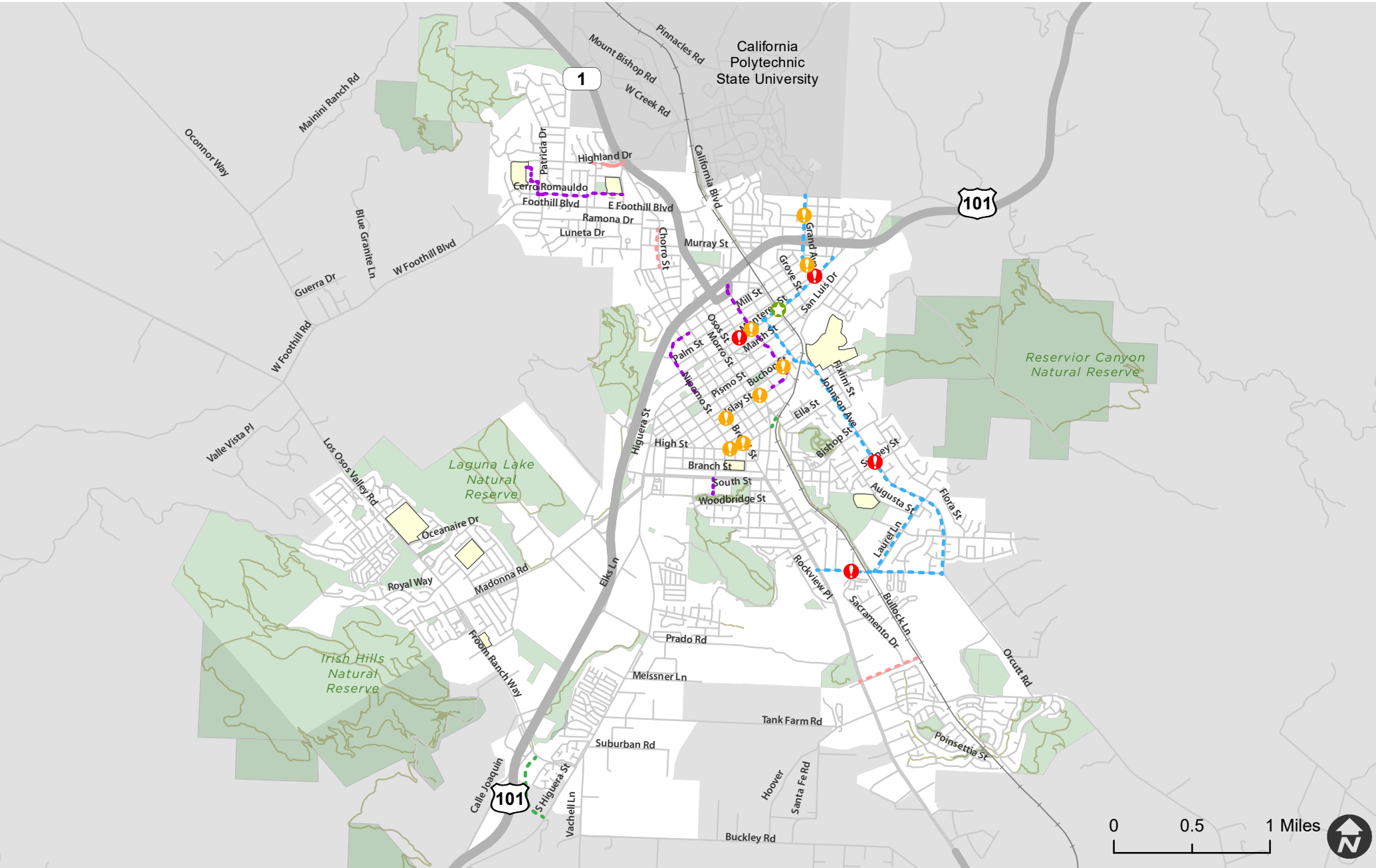
- - - - Shared-Use Path
- - - - Protected Bicycle Lane
- - - - Bicycle Lane
- - - - Neighborhood Greenway
- ! Proposed Bicycle/Pedestrian Major Crossing Improvement
- ! Proposed Bicycle/Pedestrian Minor Crossing Improvement
- ★ Proposed Bicycle/Pedestrian Grade-Separated Crossing
- School
- Park or Open Space
- Rail
- Trails



ATP Tier 2 Project List											
Corridor	User	Type	ID	Location	Cross Street A	Cross Street B	Miles	Ridership Potential	Notes	Notable Constraints	
Bob Jones Trail	Ped/Bike	Shared-Use Path	70	BJT	S. Higuera St	Los Osos Valley Rd	0.19		City/County Project. If the County is able to secure funding for the portion from Avila Beach to the Octagon Barn, this segment will be recategorized as a Tier 1 project.	Requires right-of-way, jurisdictional permits for work near creek, potential loss of ag land.	
Broad Street	Ped/Bike	Crossing Improvement (Minor)	J-55	Broad St	Upham St						
Cerro Romauldo Neighborhood Greenway	Ped/Bike	Neighborhood Greenway	123	Cerro Romauldo Ave	Ferrini Rd	Patricia Dr	0.55				
Cerro Romauldo Neighborhood Greenway	Ped/Bike	Neighborhood Greenway	123	Patricia Dr	Cerro Romauldo Ave	Craig Way	0.08				
Cerro Romauldo Neighborhood Greenway	Ped/Bike	Neighborhood Greenway	123	Craig Way	Patricia Dr	Jaycee Dr	0.05				
Cerro Romauldo Neighborhood Greenway	Ped/Bike	Neighborhood Greenway	123	Jaycee Dr	Craig Way	Bishop Peak Elementary	0.13				
Chorro Street	Bike	Bike Lane	238	Chorro St	Mission St	Meinecke Ave	0.25		Northbound bikelane only		
Grand Avenue	Bike	Protected Bike Lane	239	Grand Ave	Monterey St	Slack St	0.54			Requires auto lane reduction.	
Grand Avenue	Ped/Bike	Crossing Improvement (Minor)	J-38	Grand Ave	McCullum St		0.13		Potential for RRFB & median refuge		
Grand Avenue	Ped/Bike	Crossing Improvement (Minor)	J-66	Grand Ave	Mill St				Potential for RRFB & median refuge		
Highland Drive	Bike	Bike Lane	111	Highland Dr	Cuesta Dr	Cuesta Dr	0.2			May require partial parking removal on south side of Highland near Ferrini	
Industrial Way	Bike	Bike Lane	51	Industrial Wy	Broad St	Railroad Safety Trail	0.39			May require partial parking removal.	
Islay Street Neighborhood Greenway	Ped/Bike	Neighborhood Greenway	132	Islay St	Santa Rosa	Toro St	0.14				
Islay Street Neighborhood Greenway	Ped/Bike	Crossing Improvement (Minor)	J-67	Islay St	Broad St				Potential for RRFB		
Islay Street Neighborhood Greenway	Ped/Bike	Crossing Improvement (Minor)	J-68	Islay St	Osos St				Potential for RRFB		
Johnson Avenue	Bike	Protected Bike Lane	19	Johnson Ave	Monterey St	Orcutt Rd	2.13			May require parking removal and/or auto lane reductions.	
Johnson Avenue	Bike/Ped	Crossing Improvement (Major)	J-63	Johnson Ave	Sydney St						
Laurel Lane	Bike	Protected Bike Lane		Laurel Lane	Johnson Ave	Orcutt Rd				May require parking removal	
Monterey Street	Bike	Protected Bike Lane	18	Monterey St	Santa Rosa St	Buena Vista Ave	0.79			May require parking removal and lane configurations	
Monterey Street	Ped/Bike	Crossing Improvement (Major)	J-36	Monterey St	Grand Ave				Potential protected intersection or pike/ped scramble.	May require right-of-way	
Monterey Street	Ped/Bike	Crossing Improvement (Major)	J-27	Monterey St	Santa Rosa St				Potential bike box, dedicated bike/ped scramble		
Monterey Street	Ped/Bike	Crossing Improvement (Minor)	J-16	Monterey St	Toro St				Potential RRFB & median/diverter		
Nipomo-King Neighborhood Greenway	Ped/Bike	Neighborhood Greenway	24	Nipomo St/Peach St	Marsh St	Chorro	0.47			May require traffic volume management north of Higuera St. Potential for diverter/turn restrictions at Peach/Chorro	
Orcutt Road	Bike	Protected Bike Lane	244	Orcutt Rd	Broad St	Johnson Ave	0.81			May require partial parking removal east of Laurel	
Orcutt Road	Ped/Bike	Crossing Improvement (Major)	J-69	Orcutt Rd	Sacramento/Duncan				Planned traffic signal		
Toro Neighborhood Greenway	Ped/Bike	Neighborhood Greenway	131	Toro St	Islay St	US 101	0.69				
Toro Neighborhood Greenway	Ped/Bike	Crossing Improvement (Minor)	J-70	Toro St	Buchon St				Potential neighborhood traffic circle		

Project ID numbers correspond to mapping in the Public Viewer  
<http://slocity.maps.arcgis.com/apps/webappviewer/index.html?id=d0c9ddaa42a444bda8d5940e05891eb7>

Project ID numbers correspond to mapping in the Public Viewer  
<http://slocity.maps.arcgis.com/apps/webappviewer/index.html?id=d0c9ddaa42a444bda8d5940e05891eb7>



Sources:  
City of San Luis Obispo

# San Luis Obispo

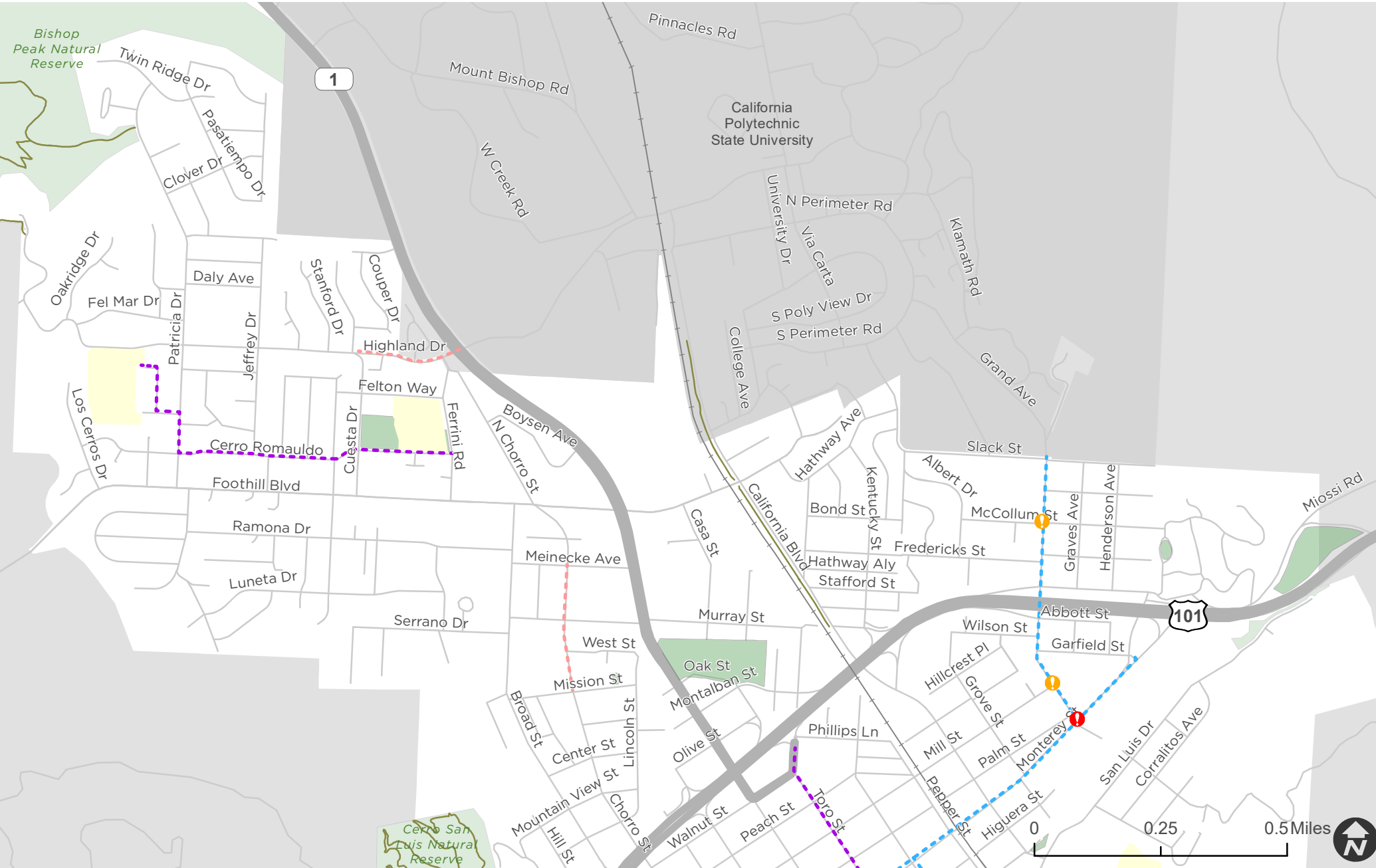
## Tier 2 Bicycle and Pedestrian Project Corridors

- - - Shared-Use Path
- - - Protected Bicycle Lane
- - - Bicycle Lane
- - - Neighborhood Greenway

- Proposed Bicycle/Pedestrian Major Crossing Improvement
- Proposed Bicycle/Pedestrian Minor Crossing Improvement
- Proposed Bicycle/Pedestrian Grade-Separated Crossing

- School
- Park or Open Space
- Rail
- Trails





# San Luis Obispo

## Tier 2 Bicycle and Pedestrian Project Corridors - North

- - - Bicycle Lane
- - - Neighborhood Greenway
- - - Protected Bicycle Lane

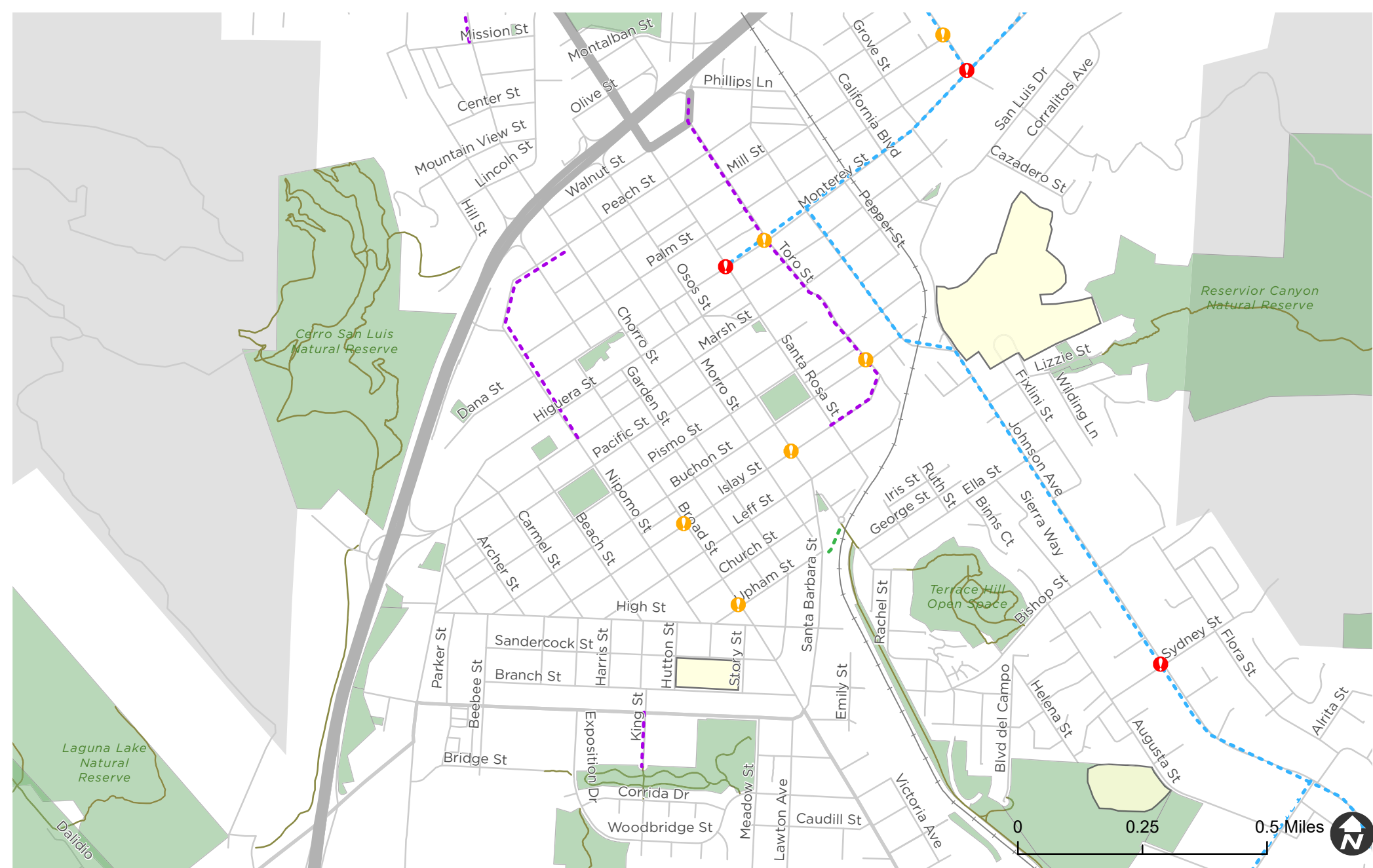
- Proposed Bicycle/Pedestrian Major Crossing Improvement
- Proposed Bicycle/Pedestrian Minor Crossing Improvement

- School
- Park or Open Space
- Rail
- Trails

Sources:  
City of San Luis Obispo







Sources:  
City of San Luis Obispo

# San Luis Obispo

## Tier 2 Bicycle and Pedestrian Project Corridors - Central

- - - - Protected Bicycle Lane
- - - - Neighborhood Greenway
- ! Proposed Bicycle/Pedestrian Major Crossing Improvement
- ! Proposed Bicycle/Pedestrian Minor Crossing Improvement
- School
- Park or Open Space
- Rail
- Trails



Sources:  
City of San Luis Obispo

# San Luis Obispo

## Tier 2 Bicycle and Pedestrian Project Corridors - Southeast

- - - Bicycle Lane
- - - - Protected Bicycle Lane
- ! Proposed Bicycle/Pedestrian Major Crossing Improvement
- School
- Park or Open Space
- Rail
- Trails





# San Luis Obispo

## Tier 2 Bicycle and Pedestrian Project Corridors - Southwest

Sources:  
City of San Luis Obispo

- - - - Shared-Use Path
- - - - Neighborhood Greenway
- School
- Park or Open Space
- - - - Protected Bicycle Lane
- Rail
- Trails



ATP Tier 3 Project List									
Corridor	User	Type	ID	Location	Cross Street A	Cross Street B	Miles	Notes	Notable Constraints
US 101 / Marsh St Undercrossing	Bike	Bike Lane	53	Marsh St	Fernandez Ln	Higuera St	0.27		Requires Caltrans coordination
Avila Ranch	Ped/Bike	Shared-Use Path	186	-	Tank Farm Rd	Buckley Rd	1.03		A portion of path requires additional right-of-way
Avila Ranch	Ped/Bike	Shared-Use Path	191	Internal	-	-	0.11		
Avila Ranch	Ped/Bike	Shared-Use Path	185	Buckley Rd	S Higuera St	Avila Ranch Eastern Boundary	0.78	Includes ped/bike bridge over creek	
Avila Ranch	Bike	Bike Lane	71	Buckley Rd	S Higuera St	Avila Ranch Eastern Boundary	0.78		
Avila Ranch	Bike	Bike Lane	10	Horizon Ln	Buckey Rd	Suburban Rd	0.79		
Avila Ranch	Bike	Bike Lane	188	Earthwood Ln	.2 mi east of Vachell	Suburban Rd	0.54		
Avila Ranch	Bike	Bike Route	241	Earthwood Ln	Vachell Ln	.2 mi east of Vachell	0.21		
Avila Ranch	Bike	Bike Lane	22	Short St	-	Suburban Rd	0.11		
Avila Ranch	Bike	Bike Lane	7	Venture Ln	Vachell Ln	Horizon Ln	0.69		
Avila Ranch	Bike	Bike Lane	8	Suburban Rd	S Higuera St	Horizon Ln	1.04		
Avila Ranch	Ped/Bike	Grade-Separated Crossing	I-13	-	Creek	-			
Bishop Street/ Roundhouse Street	Bike	Bike Lane	39	Roundhouse St	Santa Barbara St	Bushnell St	0.23		
Bishop Street/ Roundhouse Street	Bike	Bike Lane	39	Bishop St	Bushnell St	Johnson Ave	0.44		
Bishop Street/ Roundhouse Street	Bike	Grade-Separated Crossing	I-46	Bishop St	Bushnell/UPRR			Auto/ped/bike bridge over UPRR	Requires UPRR right-of-way, construction of Bishop Street Extension
Bob Jones Trail	Ped/Bike	Shared-Use Path	21	BJT	Prado Rd	Brooks St	1.2		Requires right-of-way, jurisdictional permits for work near creek
Bob Jones Trail	Ped/Bike	Shared-Use Path	66	BJT	South St	Marsh St	0.42		Requires right-of-way, jurisdictional permits for work near creek
Bob Jones Trail	Bike	Neighborhood Greenway	223	Brooks St/South St			0.12		
Bob Jones Trail	Ped/Bike	Grade-Separated Crossing	I-9	BJT	Creek			Ped/bike bridge	
Bob Jones Trail	Ped/Bike	Grade-Separated Crossing	I-10	BJT	Madonna Rd			Ped/bike bridge/tunnel	
Bob Jones Trail	Ped/Bike	Grade-Separated Crossing	I-11	BJT	Creek			Ped/bike bridge	
Bob Jones Trail	Ped/Bike	Grade-Separated Crossing	I-12	BJT	Creek			Ped/bike bridge	
Broad Street	Ped/Bike	Shared-Use Path	100	Broad (West Side)	Prado	Rockview	0.42		Requires right-of-way
California Boulevard	Bike	Protected Bike Lane	20	California Blvd	Marsh St	Monterey St	0.12		May require auto lane reductions, some parking removal
Capitolio Way	Bike	Bike Lane	139	Capitolio Way	Broad St	Sacramento Dr	0.15		May require parking removal
Capitolio Way	Ped/Bike	Crossing Improvement (Minor)	J-45	Capitolio Way	Sacramento Dr			Potential all-way stop	
El Captain	Ped/Bike	Shared-Use Path	138	-	El Captain Way	Poinsettia St	0.04		
Ella Street Greenway	Bike	Shared-Use Path	141	--	Jennifer St Bridge	Henry St	0.12		Requires UPRR right-of-way
Ella Street Greenway	Ped/Bike	Neighborhood Greenway	55	Iris St	Henry St	Ruth St	0.09		
Ella Street Greenway	Ped/Bike	Neighborhood Greenway	55	Ruth St	Iris St	Ella St	0.08		
Ella Street Greenway	Ped/Bike	Neighborhood Greenway	55	Ella St	Ruth St	Fixlini St	0.26		
Elks Lane Bike Lane	Bike	Bike Lane	159	Elks Lane	Prado Rd	S. Higuera	0.66		Requires Prado Interchange construction. May require shoulder widening
Flora Street/Fixlini Street Greenway	Ped/Bike	Neighborhood Greenway	246	Fixlini St	Lizzie St	Fixlini St	0.24		
Flora Street/Fixlini Street Greenway	Ped/Bike	Shared-Use Path	63	--	Fixlini St	Bishop St	0.2		
Flora Street/Fixlini Street Greenway	Ped/Bike	Neighborhood Greenway	246	Flora St	Bishop St	Southwood Dr	1		
Flora Street/Fixlini Street Greenway	Ped/Bike	Neighborhood Greenway	246	Southwood Dr	Flora St	Sequoia Dr	0.13		
Flora Street/Fixlini Street Greenway	Ped/Bike	Neighborhood Greenway	246	Sequoia Dr	Southwood Dr	Tanglewood Dr	0.17		
Flora Street/Fixlini Street Greenway	Ped/Bike	Grade-Separated Crossing	I-5	Tanglewood Dr				Ped/bike bridge over creek south of Tanglewood	Requires right-of-way, jurisdictional permits for work near creek
Froom Ranch Way	Ped/Bike	Shared-Use Path	182	West side of Froom Ranch Wy	Oceanaire Dr	Dalidio Dr	0.53		
Froom Ranch Way	Bike	Bike Lane	183	Froom Ranch Way	Oceanaire Dr	Dalidio Dr	0.49		

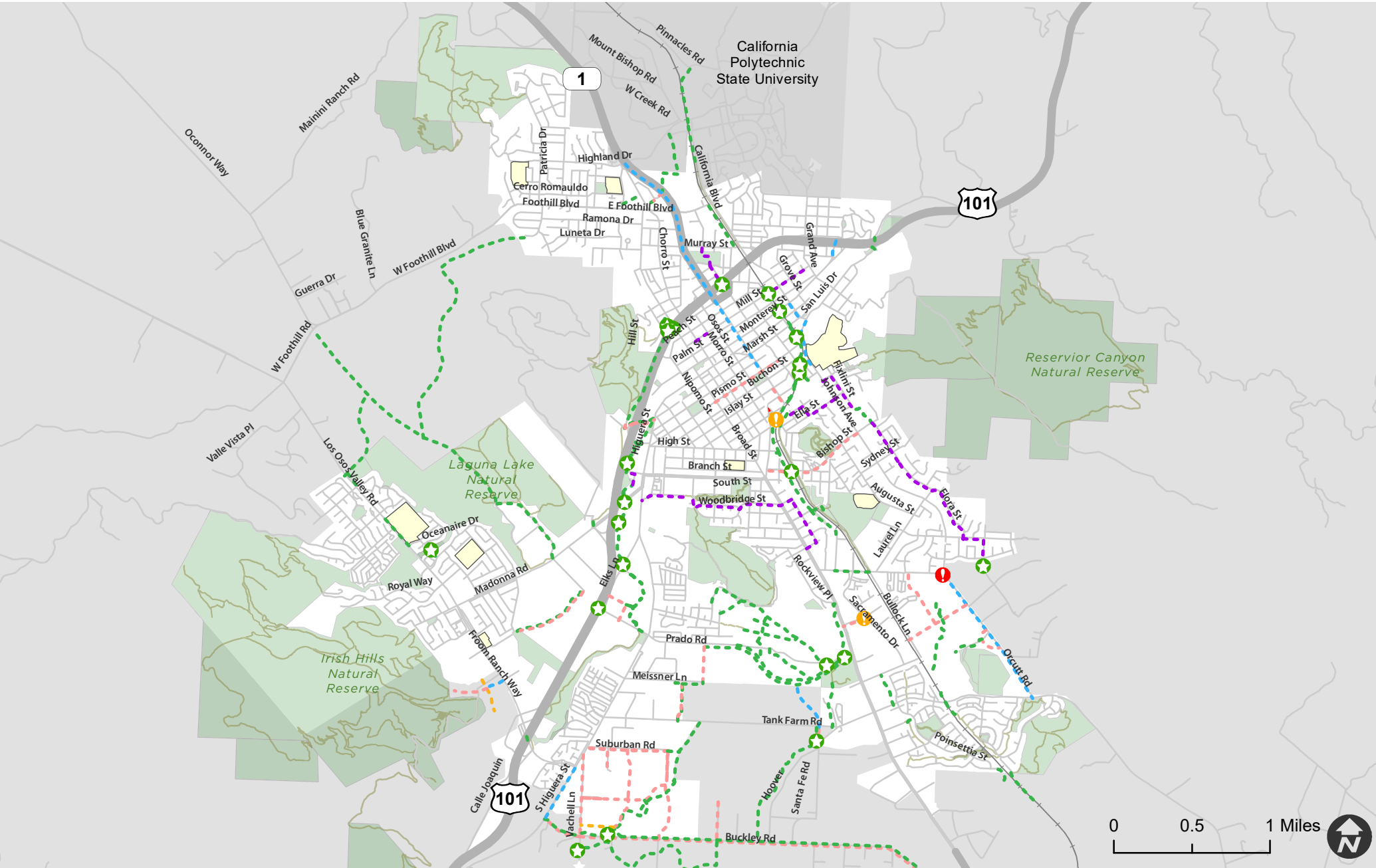
ATP Tier 3 Project List										
Corridor	User	Type	ID	Location	Cross Street A	Cross Street B	Miles	Notes	Notable Constraints	
High Street	Ped/Bike	Crossing Improvement (Minor)	J-51	High St	Beebee St					
High Street	Ped/Bike	Crossing Improvement (Minor)	J-54	High St	Carmel St					
Highland/Santa Rosa Bypass	Ped/Bike	Shared-Use Path	122		Ferrini Rd	Chorro St	0.12			Requires right-of-way/easement
Highland/Santa Rosa Bypass	Bike	Bike Lane	147	Boysen Ave	Shared Use Path	Santa Rosa St	0.07			May require parking removal
Highland/Santa Rosa Bypass	Ped/Bike	Shared-Use Path	122		Chorro	Boysen	0.07			Requires right-of-way/easement
Hwy 101 Shared Use Path	Ped/Bike	Shared-Use Path	114	US 101	Marsh St	N Broad St	0.77			
Hwy 101 Shared Use Path	Ped/Bike	Grade-Separated Crossing	I-37	US 101	Broad St				Ped/bike bridge	Requires Caltrans coordination
Hwy 101 Shared Use Path	Ped/Bike	Grade-Separated Crossing	I-38	US 101	Broad St				Ped/bike bridge	Requires Caltrans coordination
Industrial Way	Ped/Bike	Intersection Improvement (Minor)	J-14	Industrial Wy	Bougainvillea St	Sacramento Dr			Ped/bike access gate	Requires coordination with Residential HOA
Industrial / Tank Farm Bypass	Ped/Bike	Shared-Use Path	144		Tank Farm Rd	Industrial Wy	0.21			Requires right-of-way
Johnson Avenue	Ped/Bike	Intersection Improvement (Minor)	J-12	Johnson Ave	Southwood Dr				Potential RRFB & median refuge	
Johnson Avenue	Ped/Bike	Intersection Improvement (Major)	J-42	Johnson Ave	Orcutt Rd				Potential roundabout	Requires right-of-way
Laguna Middle School Bridge	Ped/Bike	Grade-Separated Crossing	125		Oceanaire Dr	Vista del Lago	0.11		Ped/bike bridge	Requires right-of-way
Laguna Lake Paths	Ped/Bike	Shared-Use Path	222	Laguna Lake Park	Madonna Rd	City Limit	1.05			
Margarita Area Shared-Use Pathways	Ped/Bike	Shared-Use Path	Various	Varies	Varies		2.97		Various planne shared-use paths throughout Margarita Specific Plan Area	
Margarita Area Shared-Use Pathway Xings	Ped/Bike	Grade-Separated Crossing	Various	Varies (2 locations)	Varies				Ped/bike bridge/tunnel crossing creek and Prado Rd	
Margarita Area (Acacia Creek Path)	Ped/Bike	Shared-Use Path	264	West side of Acacia Creek	Tank Farm Rd	Damon-Garcia Sports Fields	0.29			
Madonna Inn Path	Ped/Bike	Shared-Use Path	30	Madonna Shared Use Path	Madonna Rd	Madonna Inn	0.03		Improve connection from Madonna Road shared-use path to Madonna Inn Path	Requires Caltrans coordination & right-of-way
Orcutt Road	Ped/Bike	Shared-Use Path	154	-	McMillan Ave	Laurel Ln	0.22			Requires UPRR coordination
Orcutt Road	Bike	Protected Bike Lane	38	Orcutt Rd	Johnson Ave	Tank Farm	0.96			May require widening
Orcutt Area	Bike	Bike Lane	163	Ranch House Road	Tiburon	Orcutt Rd	0.35			
Orcutt Area	Ped/Bike	Shared-Use Path	171	-	Righetti Ranch Rd	Tiburon	0.48			
Orcutt Area	Ped/Bike	Shared-Use Path	172	-	Tiburon	South Morros	0.12			May be constructed as shares street (woonerf)
Orcutt Area	Bike	Bike Lane	161	Tiburon Rd	Ranch House/Bullock	Orcutt Rd	0.43			
Orcutt Area	Bike	Bike Lane	168	Imel Ranch Rd	Orcutt Rd	Orcutt Rd	0.21			
Orcutt Area	Ped/Bike	Shared-Use Path	175	-	Righetti Ranch Ph 2	Righetti Ranch Ph 3	0.22			
Osos Street	Ped/Bike	Crossing Improvement (Minor)	J-52	Osos St	Leff St				Potential RRFB & median refuge	
Railroad Safety Trail (west side)	Ped/Bike	Shared-Use Path	80	-	McMillan Ave	Amtrak Station	1.09		Parallel to UPRR tracks on west side	Requires UPRR right-of-way
Railroad Safety Trail (west side)	Ped/Bike	Shared-Use Path	153	California Blvd	Murray St	Foothill Blvd	0.32		Parallel to UPRR tracks on west side	Requires UPRR right-of-way
Railroad Safety Trail (west side)	Ped/Bike	Shared-Use Path	178	-	Francis Ave	Sinsheimer Park	0.1		Parallel to UPRR tracks on west side	Requires UPRR right-of-way
Railroad Safety Trail (west side)	Ped/Bike	Shared-Use Path	143	Railroad Safety Trail	Marsh St	Phillips Ln/Pepper St	0.32		Parallel to UPRR tracks on west side	Requires UPRR right-of-way
Railroad Safety Trail (west side)	Ped/Bike	Shared-Use Path	102	Railroad Safety Trail	Santa Rosa St	Marsh St	0.53		Parallel to UPRR tracks on west side	Requires UPRR right-of-way
Railroad Safety Trail	Ped/Bike	Shared-Use Path	149	Railroad Safety Trail	Santa Barbara St	Santa Rosa St	0.23		Parallel to UPRR tracks on west side	Requires UPRR right-of-way
Railroad Safety Trail	Ped/Bike	Crossing Improvement (Minor)	J-23	Railroad Ave	Osos St				New ramp from Jennifer St Bridge	Requires UPRR right-of-way
Railroad Safety Trail	Ped/Bike	Grade-Separated Crossing	I-19	Railroad Safety Trail	Fairview St/Penny Ln					Requires UPRR right-of-way
Railroad Safety Trail	Ped/Bike	Grade-Separated Crossing	I-20	Railroad Safety Trail	Johnson Ave					Requires UPRR right-of-way

ATP Tier 3 Project List									
Corridor	User	Type	ID	Location	Cross Street A	Cross Street B	Miles	Notes	Notable Constraints
Railroad Safety Trail	Ped/Bike	Shared-Use Path	95	Railroad Safety Trail	Ironbark St	Tank Farm Rd	0.1		Requires UPRR right-of-way
Railroad Safety Trail	Ped/Bike	Shared-Use Path	234	Railroad Safety Trail	Tank Farm Rd	Existing Railroad Safety Trail	0.08		Requires UPRR right-of-way
Railroad Safety Trail	Ped/Bike	Shared-Use Path	74	Railroad Safety Trail	Railroad Safety Trail	Pismo St	0.01		Requires UPRR right-of-way
Railroad Safety Trail	Ped/Bike	Grade-Separated Crossing	I-41	Railroad Safety Trail	Creek				Requires UPRR right-of-way
Railroad Safety Trail	Ped/Bike	Grade-Separated Crossing	I-21	Railroad Safety Trail	Monterey St				Requires UPRR right-of-way
Railroad Safety Trail	Ped/Bike	Grade-Separated Crossing	I-23	Railroad Safety Trail	Mill St			Undercrossing below Mill St	Requires UPRR right-of-way
Santa Fe Road	Bike	Bike Lane	46	Santa Fe Rd	Tank Farm Rd	Hoover Ave	0.1		
Santa Fe Road	Bike/Ped	Grade-Separated Crossing	I-17	Santa Fe Rd	Creek			New Santa Fe Bridge south of Tank Farm	Requires right-of-way, jurisdictional permits for work near creek
Santa Fe Road	Bike	Protected Bike Lane	107	Santa Fe Road	Tank Farm Rd	Prado Rd	0.34		
Suburban Connector	Ped/Bike	Shared-Use Path	9,204	-	Suburban Rd	Open Space	0.07	Extends from terminus of Suburban Rd to north-south path	Requires right-of-way
Santa Rosa Street	Bike	Bike Lane	152	Santa Rosa St	Railroad Ave	Islay St	0.12		
Santa Rosa Street	Bike	Protected Bike Lane	263	Santa Rosa St	Pismo St	Walnut St	1.1		Requires parking removal and/or auto lane reduction
Serra Meadows to Tank Farm Connector	Bike	Bike Lane	253	-	Tank Farm Rd	Meissner Ln	0.24	New commercial collector between Tank Farm and Grenada	
Serra Meadows to Tank Farm Connector	Ped/Bike	Shared-Use Path	251	-	Tank Farm Rd	Meissner Ln	0.3		
Serra Meadows to Tank Farm Connector	Ped/Bike	Shared-Use Path	255	Meissner Ln	-	-	0.14	Connects Meissner with new road south of Prado/Serra Meadows roundabout	
Serra Meadows to Tank Farm Connector	Bike	Bike Lane	177	-	Prado Rd	-	0.22		
Toro/Lemon/Casa Street Greenway	Bike	Shared-Use Path	128	-	Toro St	Lemon St	0.08		Requires right-of-way
Toro/Lemon/Casa Street Greenway	Ped/Bike	Neighborhood Greenway	129	Lemon St/Santa Rosa Park	US 101	Murray St	0.29		Requires right-of-way
Toro/Lemon/Casa Street Greenway	Ped/Bike	Grade-Separated Crossing	I-32	Toro St	US 101			Ped/bike bridge over US101	Requires Caltrans coordination
US 101 / Broad St Overcrossing	Ped/Bike	Grade-Separated Crossing	I-33	Broad St	US 101			Potential ped/bike bridge	Requires Caltrans coordination, closure of existing US 101/Broad ramps. Major improvements to US 101/Hwy 1 interchange required first.
Vachell Lane	Bike	Bike Lane	49	Vachell Ln	Buckley Rd	S. Higuera	0.52		
Woodbridge/Victoria Greenway	Ped/Bike	Neighborhood Greenway	248	Bridge St	Higuera St	Exposition Dr	0.29		
Woodbridge/Victoria Greenway	Ped/Bike	Neighborhood Greenway	248	Exposition Dr	Bridge St	Corrida Dr	0.06		
Woodbridge/Victoria Greenway	Ped/Bike	Neighborhood Greenway	248	Corrida Dr	Exposition Dr	Woodbridge St	0.29		
Woodbridge/Victoria Greenway	Ped/Bike	Neighborhood Greenway	248	Woodbridge St	Corrida Dr	Victoria Ave	0.36		
Woodbridge/Victoria Greenway	Ped/Bike	Neighborhood Greenway	247	Victoria Ave	Woodbridge St	Mutsuhito Ave	0.32		
Woodbridge/Victoria Greenway	Ped/Bike	Neighborhood Greenway	247	Mutsuhito Ave	Broad St	Victoria Ave	0.7		



<b>Non-City Projects</b>									
Corridor	User	Type	ID	Location	Cross Street A	Cross Street B	Miles	Notes	Notable Constraints
Buckley Road	Ped/Bike	Shared-Use Path	185	Buckley Rd (County)	Avila Ranch boundary	Edna Rd	2		Requires County coordination
Buckley Road	Bike	Bike Lane	71	Buckley Rd (County)	Avila Ranch boundary	Edna Rd	2		Requires County coordination
Buckley Road Extension Path	Ped/Bike	Shared-Use Path	69		S. Higuera St	Vachell	0.27		Requires County coordination
Buckley Area, East Fork Bikeway	Ped/Bike	Shared-Use Path	72	-	Buckley Rd	-	1.28		Requires County coordination
California Blvd	Ped/Bike	Shared-Use Path	82	California Blvd	Spanos Stadium	Sports Complex Rd	0.62		Requires Cal Poly coordination
Cuesta Park to San Luis Drive Connector	Ped/Bike	Grade Separated Crossing	I-27	-	US 101				Requires Caltrans coordination
Edna-Price Canyon Trail	Ped/Bike	Shared-Use Path			Snapdragon Way				Requires County coordination
Esperanza Lane	Bike	Bike Lane	54	Esperanza Ln	Buckley Rd	Northern Terminus	0.25		Requires County coordination
Highland/Santa Rosa Bypass	Ped/Bike	Shared-Use Path	56		Santa Rosa St	Highland Dr	0.51		Requires Cal Poly coordination
Highland/Santa Rosa Bypass	Ped/Bike	Crossing Improvement (Major)	I-44	Santa Rosa St	Boysen Ave			Ped/bike bridge or hybrid beacon	Requires Caltrans coordination
Hoover Avenue Path	Bike	Shared-Use Path	176	Parallel to Hoover	Santa Fe Road	Buckley Road	0.94		Requires County coordination
Laguna Lake Paths	Ped/Bike	Shared-Use Path	155		Laguna Lake/City Limit	San Jose Ct	1.81		Requires County coordination
Laguna Lake Paths	Ped/Bike	Shared-Use Path	222		Laguna Lake/City Limit	Foothill Blvd	1.18		Requires County coordination
Laguna Lake Paths	Ped/Bike	Shared-Use Path	158		Los Osos Valley Rd	Laguna Lake Path	0.7		Requires County coordination
Railroad Safety Trail	Ped/Bike	Shared-Use Path	73	RRST	City Limit	Sweetbay Ln	0.27		Requires County coordination
Santa Rosa / Cal Poly	Ped/Bike	Grade Separated Crossing	I-25	California Blvd	Creek			Ped/bike bridge	Requires Cal Poly coordination
Santa Rosa / Cal Poly	Ped/Bike	Grade Separated Crossing	I-26	Orchard Rd	Creek			Ped/bike bridge	Requires Cal Poly coordination
Santa Rosa Street (Highway 1)	Bike	Protected Bike Lane	263	Santa Rosa St	Walnut St	Highland Dr	0.53		Requires Caltrans coordination
Santa Rosa Street	Ped/Bike	Crossing Improvement (Major)	J-34	Santa Rosa St	Murray St			Improve bike detection	Requires Caltrans coordination
Santa Rosa Street	Ped/Bike	Crossing Improvement (Major)	J-5	Santa Rosa St	Highland Dr			Potential protected intersection and/or bike box, bike signal	Requires Caltrans coordination
Railroad Safety Trail	Ped/Bike	Shared Use Path	84	-	Union Pacific Railroad	-	0.04		Requires SLCUSD coordination
Vachell/East Fork Bikeway Bridge	Ped/Bike	Grade-Separated Crossing	I-18	Vachell	Creek Crossing			Ped/bike bridge	Requires County coordination

These are projects which have been identified in the Plan but are under the jurisdiction of other agencies.



Sources:  
City of San Luis Obispo

# San Luis Obispo

## Tier 3 & Non-City Bicycle and Pedestrian Project Corridors

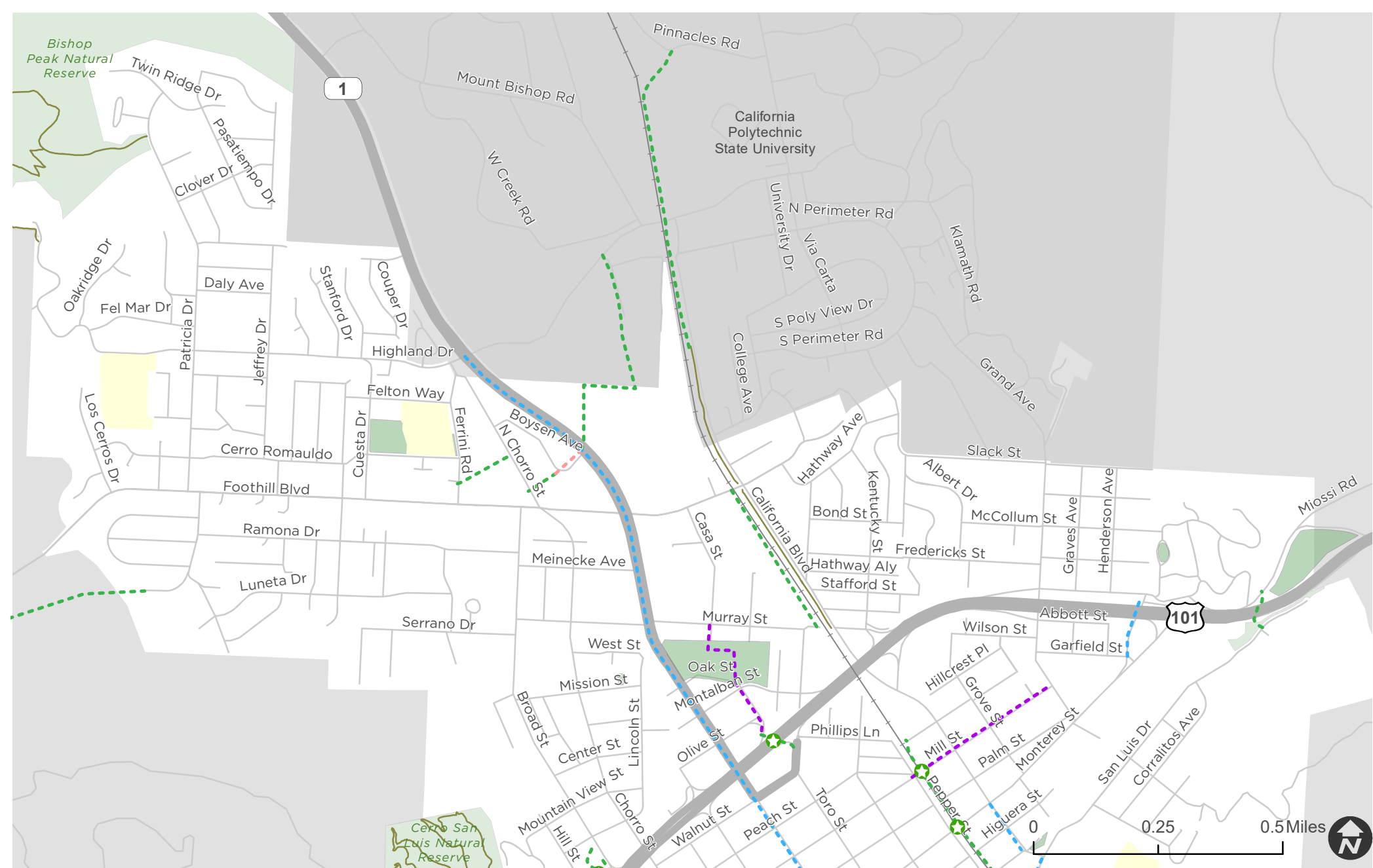
- - - Shared-Use Path
- - - Protected Bicycle Lane
- - - Bicycle Lane
- - - Neighborhood Greenway
- - - Bicycle Route

- ! Proposed Bicycle/Pedestrian Major Crossing Improvement
- ! Proposed Bicycle/Pedestrian Minor Crossing Improvement
- ★ Proposed Bicycle/Pedestrian Grade-Separated Crossing

- School
- Park or Open Space
- Rail
- Trails







# San Luis Obispo

## Tier 3 & Non-City Bicycle and Pedestrian Project Corridors

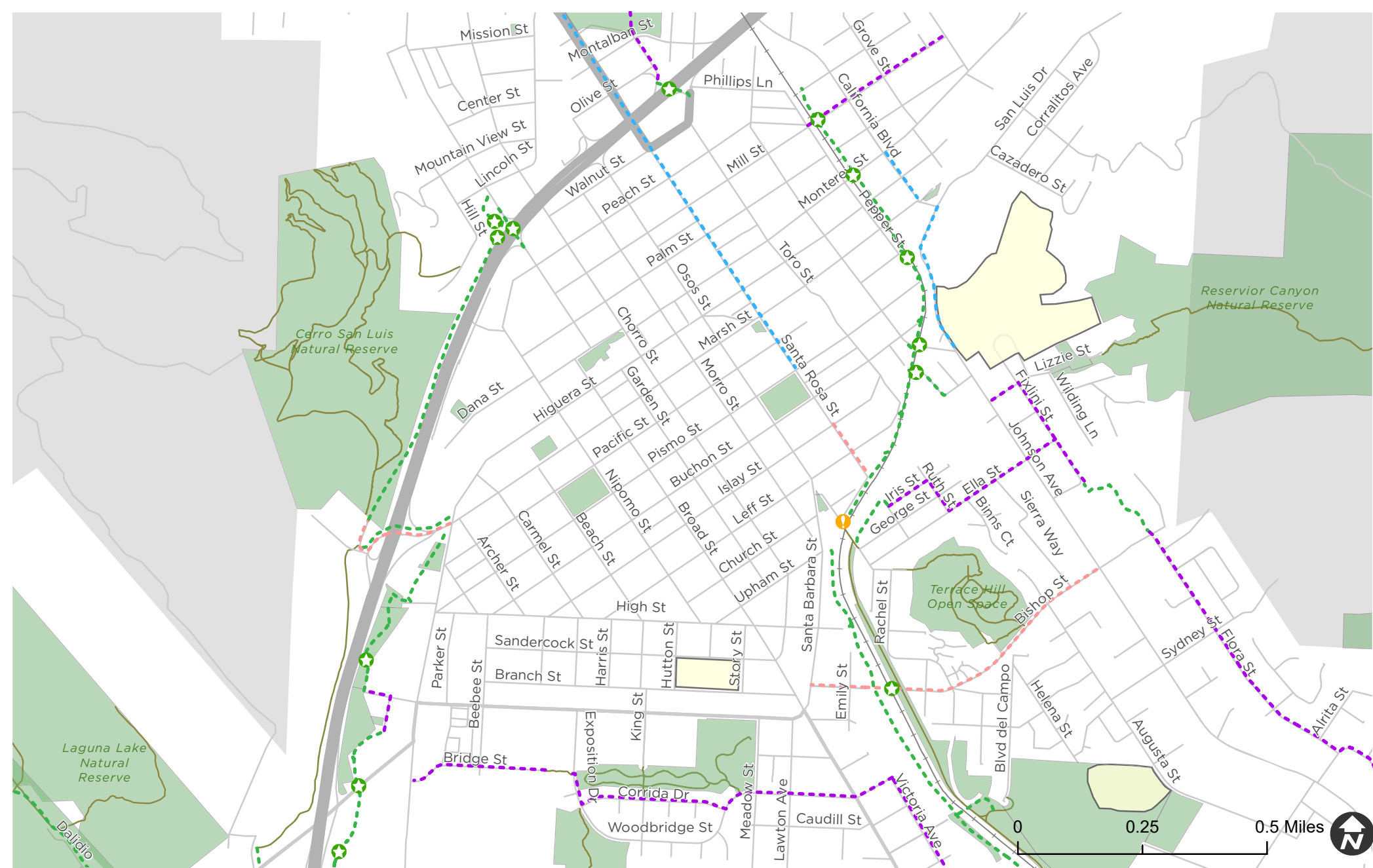
- - - Shared-Use Path
- - - Protected Bicycle Lane
- - - Bicycle Lane
- - - Neighborhood Greenway

Proposed Bicycle/Pedestrian Grade-Separated Crossing

- School
- Park or Open Space
- Rail
- Trails

Sources:  
City of San Luis Obispo





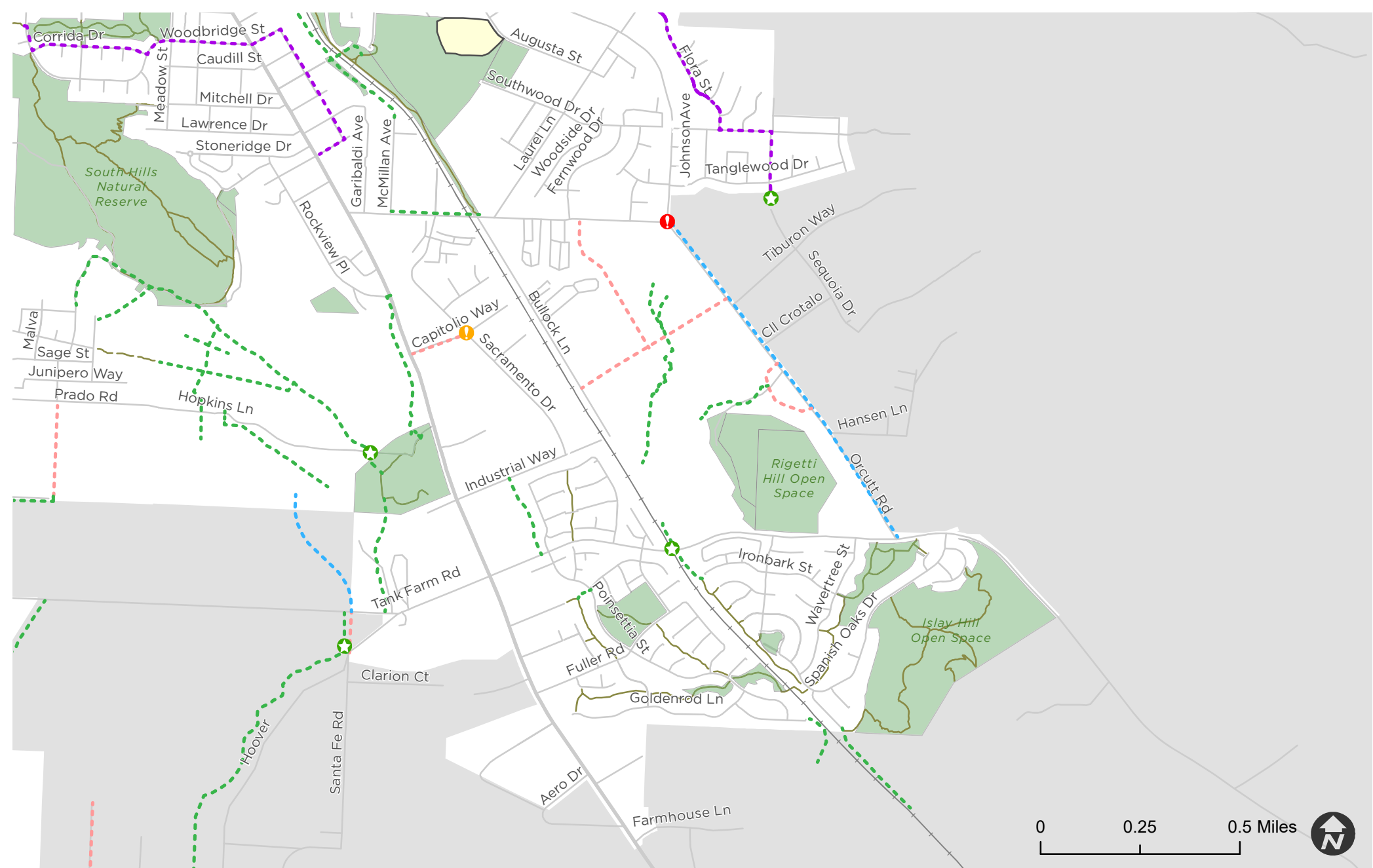
Sources:  
City of San Luis Obispo

# San Luis Obispo

## Tier 3 & Non-City Bicycle and Pedestrian Project Corridors

- - - Shared-Use Path
- - - Protected Bicycle Lane
- - - Bicycle Lane
- - - Neighborhood Greenway
- ! Proposed Bicycle/Pedestrian Major Crossing Improvement
- ! Proposed Bicycle/Pedestrian Minor Crossing Improvement
- ★ Proposed Bicycle/Pedestrian Grade-Separated Crossing
- School
- Park or Open Space
- Rail
- Trails





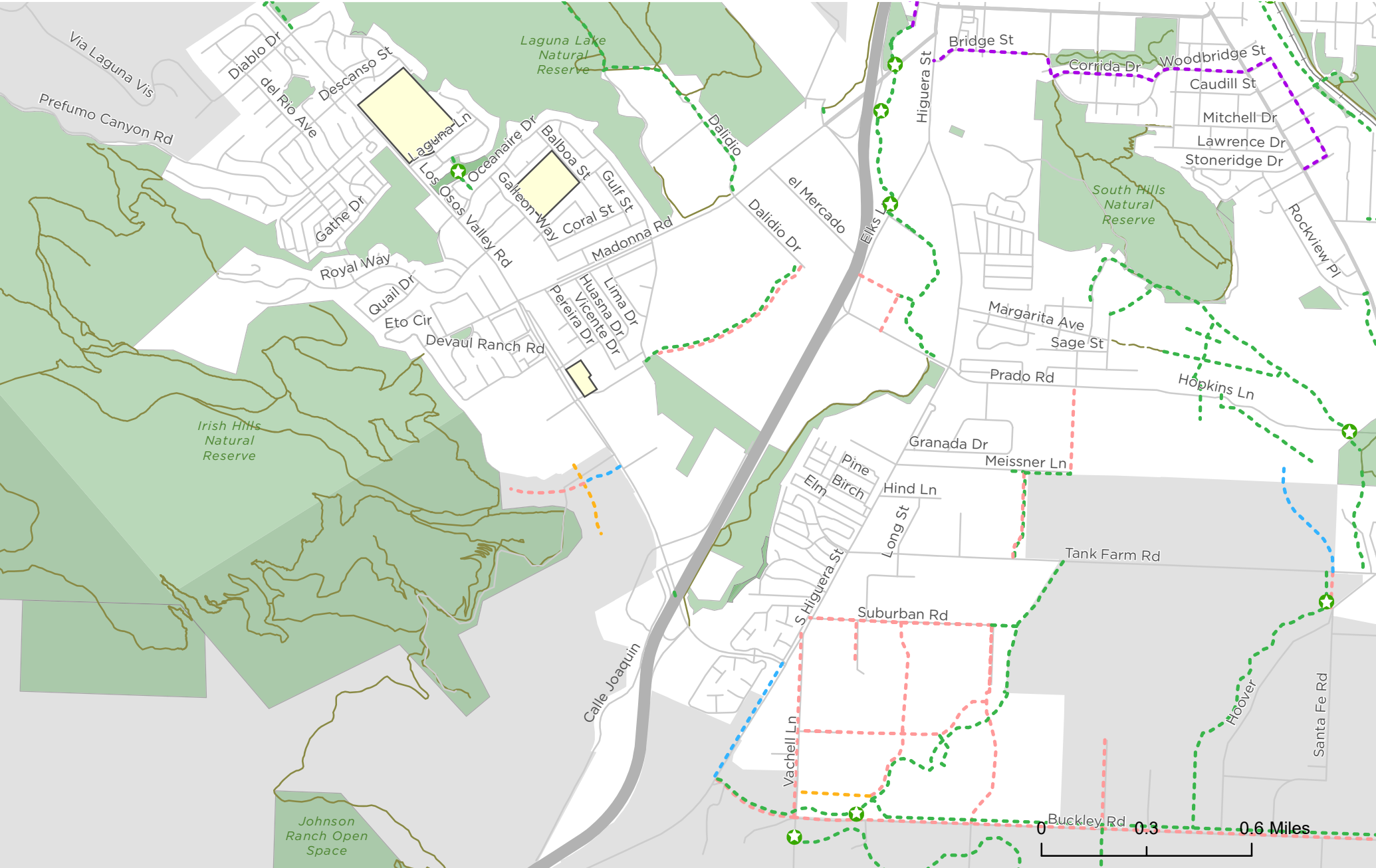
# San Luis Obispo

## Tier 3 & Non-City Bicycle and Pedestrian Project Corridors

- - - Shared-Use Path
- - - Protected Bicycle Lane
- - - Bicycle Lane
- - - Neighborhood Greenway
- ! Proposed Bicycle/Pedestrian Major Crossing Improvement
- ! Proposed Bicycle/Pedestrian Minor Crossing Improvement
- ★ Proposed Bicycle/Pedestrian Grade-Separated Crossing
- School
- Park or Open Space
- Rail
- Trails

Sources:  
City of San Luis Obispo





# San Luis Obispo

## Tier 3 & Non-City Bicycle and Pedestrian Project Corridors

- - - Shared-Use Path
- - - Protected Bicycle Lane
- - - Bicycle Lane
- - - Neighborhood Greenway
- \* Proposed Bicycle/Pedestrian Grade-Separated Crossing
- School
- Park or Open Space
- Rail
- Trails

Sources:  
City of San Luis Obispo

