

# HOW IS YOUR 1/2 PERCENT SALES TAX SPENT?



## ANNUAL COMMUNITY REPORT IN BRIEF Fiscal Year 2019–20 (JULY 2019 - JUNE 2020)



### WHAT IS THE LOCAL REVENUE MEASURE?

The Local Revenue Measure – also known as Measure G – is a one-half percent local sales tax approved by City voters in November 2006. It protects and maintains essential services and facilities, such as open space preservation, bike lanes and sidewalks, public safety, neighborhood street paving and code enforcement, flood protection, senior programs, and other vital services and capital improvement projects.

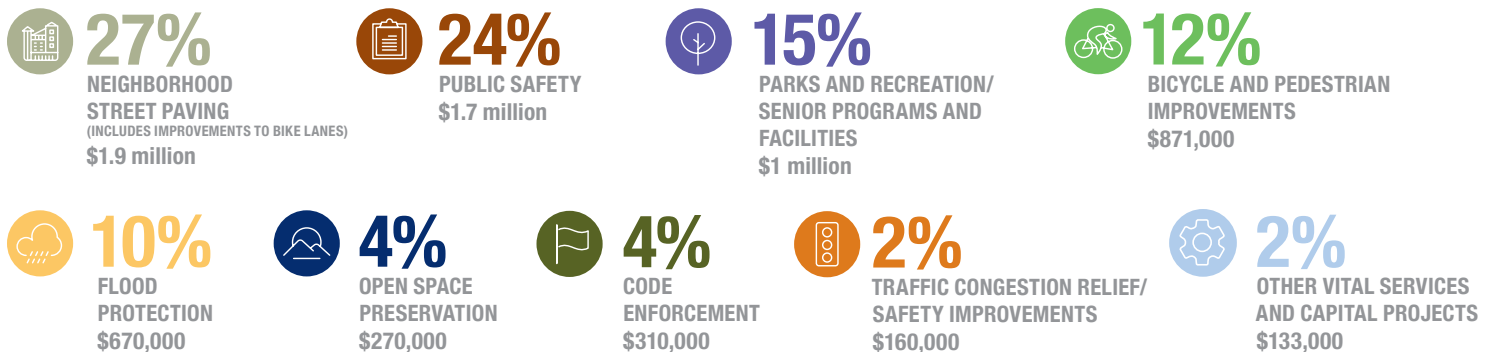
These community spending priorities help guide the Citizens' Revenue Enhancement Oversight Commission (REOC) when making recommendations to the Council about Local Revenue Measure uses. The Council uses the REOC's input, and additional public feedback, to prioritize use of the Local Revenue Measure funding as part of the City's two-year financial planning process.

#### COVID-19 Impacts

This report in brief highlights the revenue and uses of the Local Revenue Measure for the time frame beginning July 2019 and ending June 2020. Due to the economic impacts of the COVID-19 pandemic, Local Revenue Measure revenues were lower than originally projected. To offset the loss in revenues, the City reduced and deferred non-essential services and non-critical infrastructure projects while prioritizing essential City services such as public safety and emergency response.

The REOC will continue its oversight role on the use of the Local Revenue Measure to support accountability and public engagement efforts. The Local Revenue Measure continues to be a vital resource to deliver the community's highest priorities and support San Luis Obispo's economic stability, recovery and resiliency. Community members can learn more about the Local Revenue Measure by visiting [www.slocity.org/localrevenue](http://www.slocity.org/localrevenue).

### 2019–20 Local Revenue Measure funds were used on the following Council-adopted priorities:



### SPENDING HIGHLIGHTS



#### Open Space

Local Revenue Measure funding was used for preliminary steps toward securing a conservation easement for the Miossi Brothers La Cuesta Ranch. The Miossi Open Space is expected to formally open to the public in Spring 2021 featuring new trails, overlook benches, an informational kiosk and other standard trailhead amenities.



#### Public Safety

The Local Revenue Measure funded patrol officers and a Sergeant, including the Downtown Bicycle Officers. Downtown patrol has been instrumental in being a visual deterrent and enforcement option in the downtown core to keep residents, businesses and visitors safe.



#### Flood Protection

The Bullock Lane storm drain replaced a corrugated metal pipe culvert crossing at Bullock Lane. In addition to a new culvert pipe, the project included installation of a concrete headwall and rock slope protection features to guard against major storm events.



# REVENUES

Local one-half-percent sales tax revenue totaled **\$7.7 million** in 2019–20, which added approximately **13 percent** to the general fund. The Local Revenue Measure has generated more than **\$87.1 million** since its original adoption in November 2006.

**\$7.7M**

For every \$1 of revenue generated by the Local Revenue Measure, approximately **70¢** is paid by **visitors** and **30¢** is paid by **City residents**.

(This information was based on 2019 data and may change in the current and future fiscal years due to the impacts of the COVID-19 pandemic on our community.)

## Operating Uses (\$2.2M) // 32% – Funds positions that provide services

Examples of these costs include funding for positions such as police officers, open space rangers and flood control staff.

## Capital Uses (\$4.8M) // 68% – Funds construction and investment in equipment

Examples of capital expenditures were the South Broad Street Improvements, a conservation easement for the Miossi Brothers La Cuesta Ranch, and the Islay Hill Park Playground.



### Islay Hill Park

The Local Revenue Measure funded the replacement of the playground equipment and pathways at Islay Hill Park. The project also included new shade structures over the play areas, picnic tables and a hydration station.

## PROJECT HIGHLIGHT

### South Broad Street Improvements

As the main route to the San Luis Obispo County Airport, surrounding neighborhoods, shopping and the Damon Garcia Sports Fields, South Broad Street is used by pedestrians, bicyclists and vehicles. The project included the removal of failing asphalt pavement and replacement with a new asphalt section to meet the demands for a variety of modes of transportation using South Broad Street. The project also included the construction of six new curb ramps and substantial roadway striping changes to improve bicycle safety.



### Bicycle Improvements

Specific bicycle improvements included the installation of buffered bike lanes as well as the narrowing of vehicle travel lanes to increase bike lane widths.

