

HOW IS YOUR 1.5 PERCENT SALES TAX SPENT



ANNUAL COMMUNITY REPORT IN BRIEF

Fiscal Year 2020-21 (July 2020-June 2021)



WHAT IS THE LOCAL REVENUE MEASURE?

The Local Revenue Measure - also known as Measure G-20 is a one-and-a-half percent (1.5%) local sales tax approved by City voters in November 2020. It supports and maintains essential services and facilities, such as open space preservation, bike lanes and sidewalks, public safety, neighborhood street paving and code enforcement, flood protection, senior programs, and other services and capital improvement projects vital to a thriving community.

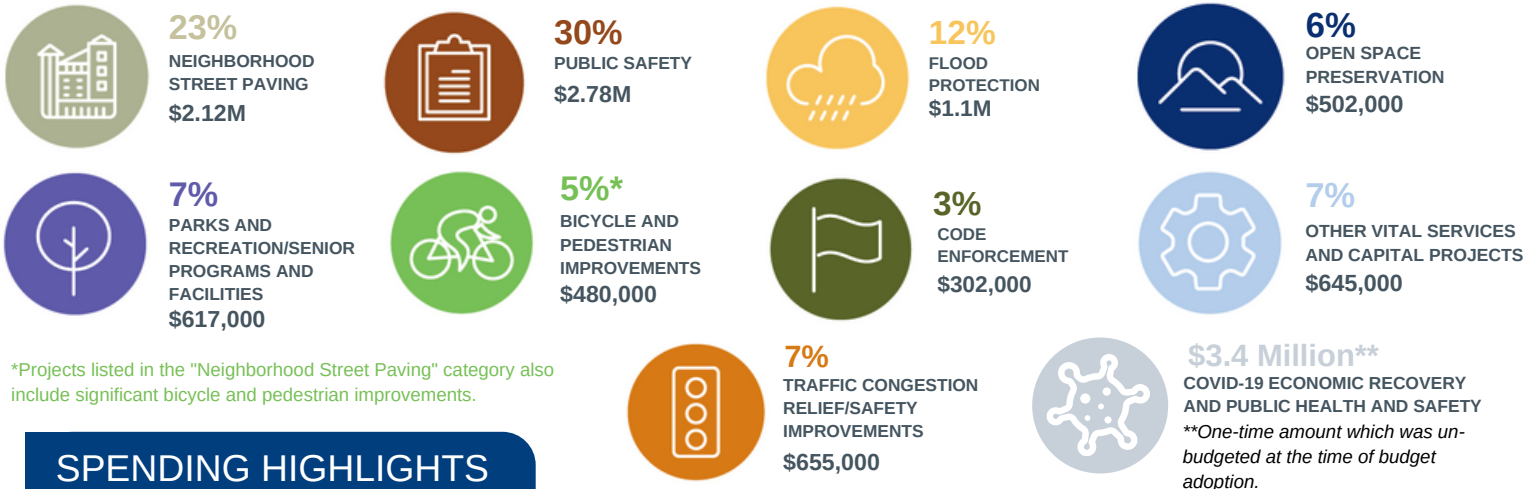
The adopted community spending priorities help guide the Citizens' Revenue Enhancement Oversight Commission (REOC) when making recommendations to the City Council about Local Revenue Measure uses. The Council uses the REOC's input, and additional public feedback, to prioritize use of the Local Revenue Measure funding as part of the City's two-year financial plan process.

This report in brief highlights the revenue and uses of the Local Revenue Measure from July 2020 and ending June 2021.

The REOC will continue its oversight role on the use of the Local Revenue Measure to support accountability, transparency, and public engagement efforts. The Local Revenue Measure continues to be a vital resource to deliver the community's highest priorities and support San Luis Obispo's economic stability, recovery and resiliency. Community members can learn more about the Local Revenue Measure by visiting www.slocity.org/localrevenue.



2020-21 Local Revenue Measure funds were used on the following Council-adopted priorities:



*Projects listed in the "Neighborhood Street Paving" category also include significant bicycle and pedestrian improvements.

SPENDING HIGHLIGHTS



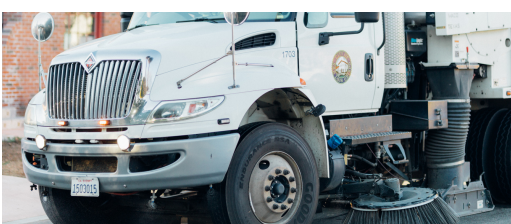
Economic Recovery and Public Health and Safety COVID-19

At the time that Measure G20 passed, there was an immediate need to invest in additional economic recovery efforts to support businesses and homeless services to assist the community's most vulnerable. The additional revenue collected from the increased local sales tax rate had not been included in the adopted budget as it became effective on April 1, 2021. On December 8, 2020 Council approved the allocation of \$3,425,000 from the augmented local transaction and use tax for economic recovery and community assistance efforts.



Miozzi Open Space

Rangers funded by the Local Revenue Measure have been working hard to unveil the City's latest trail project in the Miozzi Open Space. The 260-acre property currently has 3.1 miles of trail with an additional 3+ miles planned in the future. Rangers installed a 12-foot wide panoramic informational sign on the Open Space that allow users to learn more about the nine sisters (Morros) history.



Asset Maintenance

One of the major uses of Local Revenue Measure is for the maintenance of City infrastructure, including roads, parks, and public facilities. The Local Revenue Measure also helps fund the vehicles and equipment necessary to maintain the infrastructure. All City streets are swept on a regular basis. Visit the City's interactive website to see the street sweeping schedule: <https://www.slocity.org/living/maps/street-sweeping>

REVENUES

Local sales tax revenue totaled \$12.8 million in 2020–21, accounting for approximately 14.6 percent of general fund revenue. The Local Revenue Measure has generated more than \$100 million since its original adoption in November 2006.

\$12.8M

For every \$1 of revenue generated by the Local Revenue Measure, approximately 70¢ is paid by visitors and 30¢ is paid by City residents.

(This information was based on 2019 data and may change in the current and future fiscal years due to the impacts of the COVID-19 pandemic on our community.)

USES

Operating Uses (\$2.4M // 26%) – To fund positions that provide community services

Examples of these costs include funding for positions such as police officers, open space rangers and flood control staff.

Capital Uses (\$6.8M // 74%) – To fund construction and investment in infrastructure & equipment

Examples of capital expenditures include construction of major projects like the Marsh Street Bridge Replacement as well as the maintenance of City road and park infrastructure.



Streets Resurfacing and Reconstruction

The Local Revenue Measure helps fund the annual resurfacing and reconstruction of local streets. New road designs will help improve bicycle safety and promote multi-modal transportation. Specific roadway improvements for 2020-21 included the installation of buffered bike lanes as well as pedestrian crossing beacons along High and Nipomo Street.

PROJECT SPOTLIGHT

Marsh Street Bridge

In January 2021, the City completed the Marsh Street Bridge Replacement Project, which significantly improved the safety of a major connection to Downtown San Luis Obispo. Revitalization of the bridge is part of the City's ongoing efforts toward Downtown Vitality. The bridge, located between Osos and Santa Rosa Street at the San Luis Obispo Creek crossing, has stood for over a hundred years and in 2008 was determined to be structurally deficient. Replacement of the bridge was achieved thanks to the diligence of many agencies, contractors, and City staff.



To highlight the historical significance of the original bridge, energy-efficient LED fixtures were installed that replicate the original kerosene lamps that were lit along the bridge every evening. The guardrails mimic the historical structure as well.