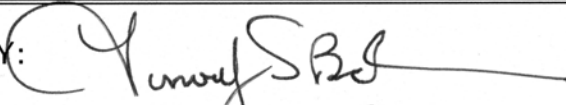


GUIDELINES FOR CONSTRUCTION ZONES

Engineering Standards – Appendix G
February 2014

APPROVED BY:


TIMOTHY SCOTT BOCHUM



Approved on: February 18, 2014

ADOPTED BY THE CITY COUNCIL OF SAN LUIS OBISPO
BY RESOLUTION NO. 10495 (2014 SERIES)
FEBRUARY 18, 2014

**PUBLIC WORKS DEPARTMENT
TRAFFIC ENGINEERING DIVISION**

919 Palm Street
San Luis Obispo, CA 93401
(805) 781-7200

GENERAL NOTES:












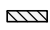
- A. These distances are guidelines only. Actual distances will be determined on an individual basis by the City. Before any work may be started in the street area:
 - 1. A traffic control plan shall be submitted to, and then approved by the City Engineer.
 - 2. Signs and delineation shall be in place, inspected and approved by a Public Works Inspector.
- B. During construction:
 - 1. A copy of the approved traffic control plan shall be kept on the job site at all times.
 - 2. All workers in the street area shall wear ANSI Class III safety apparel.
 - 3. Flaggers shall be used as required.
 - 4. All traffic control and devices shall comply with the Caltrans Traffic Manual / MUTCD.

FIGURE NOTES:

- 1. All signs and traffic control devices shall conform to the MUTCD and CALTRANS Standards.
- 2. All cones shall be 18" or higher. Cones used for night work shall be 28" or higher and reflectorized by a 6" band located 3" to 4" from the top of the cone and an additional 4" band located 2" below the 6" band.
- 3. Speeds on advisory plate to be determined by the City Engineer.
- 4. Temporary parking sign(s) must be placed a minimum of 30 hours in advance of work when parking removal is required to maintain a 10' minimum travel lane. Contact City of San Luis Obispo Police Department at 781-7312 for verification.
- 5. Use flashing arrow sign on roadways with three lanes or more in speed zones of 35 MPH or greater, or when required in approved Traffic Control Plan. Use high level warning device in speed zones of less than 35 MPH. A single flashing arrow sign (for each direction of travel) may be used in place of flashing beacons.
- 6. Flashing arrow sign (FAS) shall be Type I per Sec. 12-3.03 of the current Caltrans Standard Specifications. Operate FAS in Sequential arrow mode.
- 7. A G20-2 (C14) "END ROAD WORK" sign, as appropriate, shall be placed at the end of the work zone.
- 8. All warning signs for night lane closure shall be illuminated or reflectorized. All advance warning signs shall be supplemented with flashing beacons during night lane closures.
- 9. Provide access for all driveways.
- 10. Where signalized intersections are affected, provide notice to City Traffic Signal Maintenance Technician.
- 11. When construction signage is placed in a open bike lane, a 4' minimum lane for bicycle usage shall be maintained. If 4' minimum is unobtainable, signage shall be pole mounted.

FIGURE LEGEND

(PAGES 2-17)

-  Traffic Cone or Delineator
-  Sign (shown facing left)
-  Flashing Arrow Sign
-  High Level Warning Device (Flag Tree)
-  Portable Flashing Beacon (Night Work)
-  Direction of Travel (Not a Pavement Marking)
-  Manhole
-  Maintenance Vehicle w/ Flashing Lights
-  Flagger
-  Type II Barricade
-  Type III Barricade
-  Longitudinal Channelizing Device

**CHART A (All Figures)
MINIMUM DELINEATOR AND SIGN PLACEMENT**

TRAFFIC SPEED	TAPER LENGTH (L)	DELINEATOR SPACING		SIGN SPACING (S) (Advance of Taper)	BUFFER SPACE (B)
		(Taper)*	(Tangent)		
25 MPH	125'	26'	53'	100'	155'
30 MPH	190'	33'	66'	100'	200'
35 MPH	276'	39'	79'	100'	250'
40 MPH	328'	43'	85'	100'	305'
45 MPH	525'	46'	92'	328'	360'
50 MPH	600'	53'	105'	328'	425'
55 MPH	663'	59'	118'	328'	495'

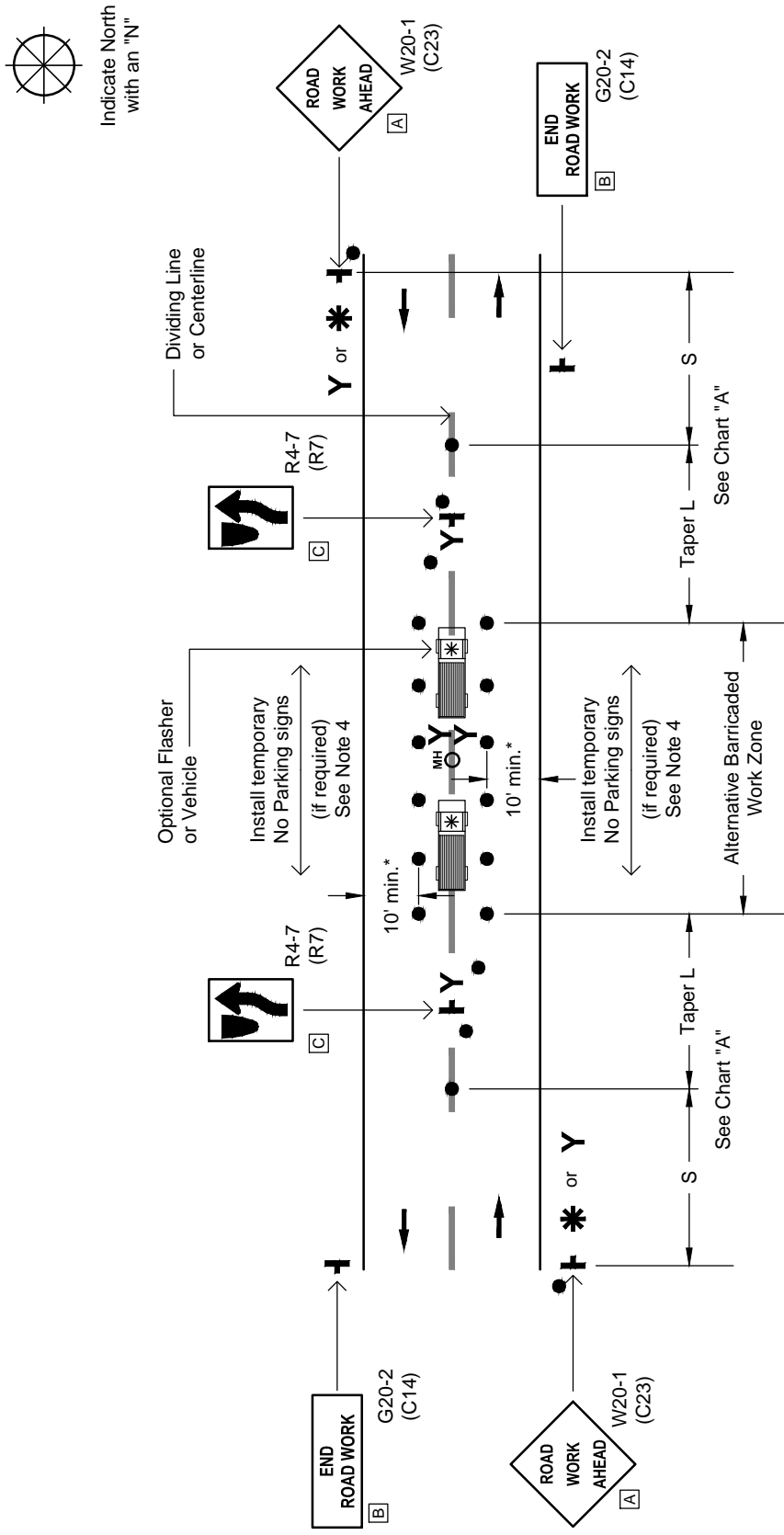
*12' STANDARD LANE WIDTH FOR CALCULATION PURPOSES. WIDER LANES REQUIRE ADDITIONAL LENGTH

REVISIONS	BY	APP	DATE
Figure Notes and Legend; Drafting	JDL	MH	4-13
Added Note 13	MH	BL	11-09

GUIDELINES FOR CONSTRUCTION ZONES

Engineering Standards - Appendix G

FIGURE A TWO-LANE WORK IN CENTER OF ROADWAY

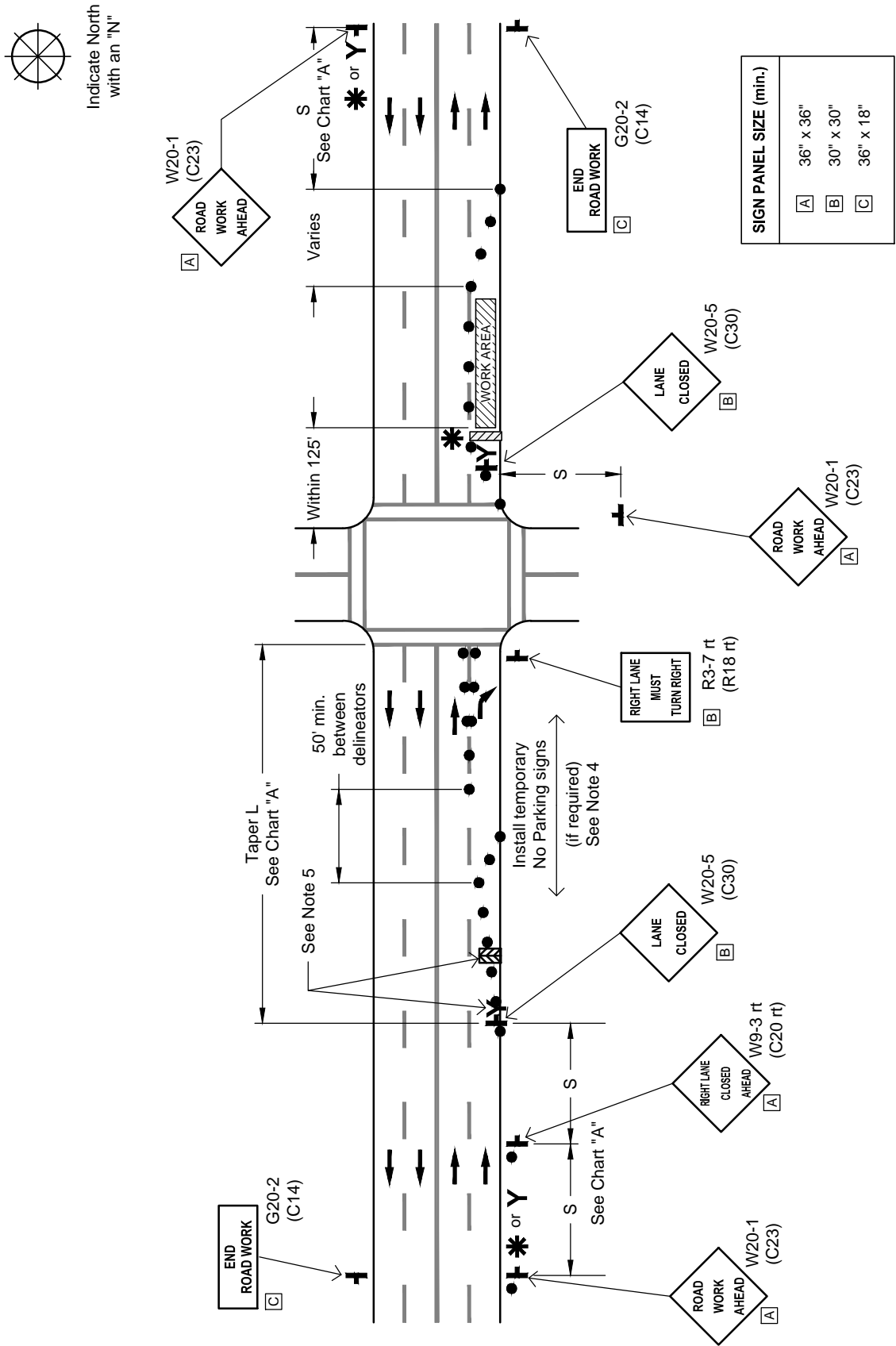


SIGN PANEL SIZE (min.)	
A	36" x 36"
B	36" x 18"
C	24" x 18"

* SEE PAGE 1 THIS APPENDIX FOR LEGEND, NOTES AND SPACING REQUIREMENTS.

REVISIONS	BY	APP	DATE
New Figure	MH	JDW	11-04
Drafting edits	JDL	MH	4-13

FIGURE C MULTI-LANE OUTSIDE LANE CLOSURE BEYOND INTERSECTION

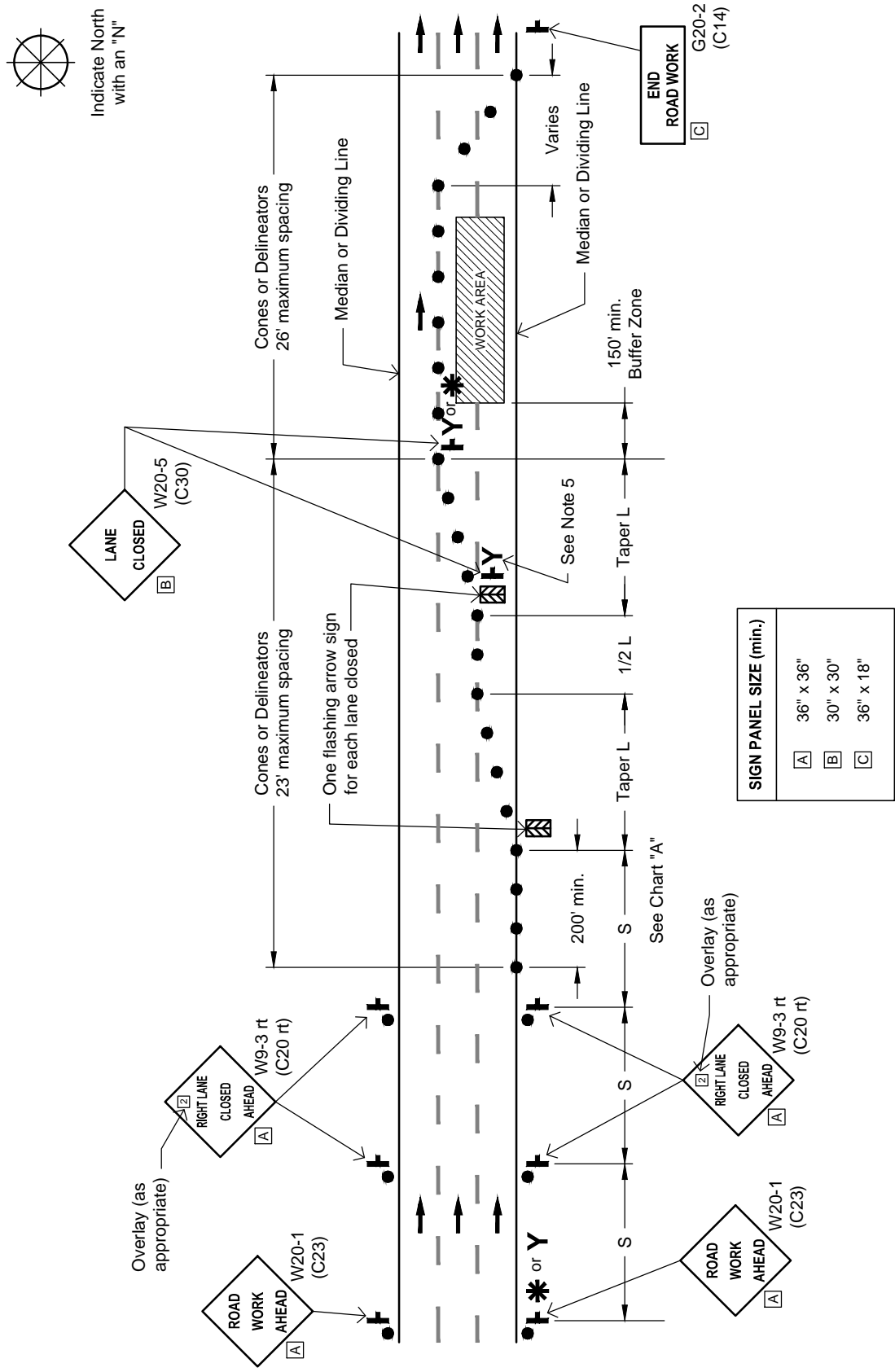


* SEE PAGE 1 THIS APPENDIX FOR LEGEND, NOTES AND SPACING REQUIREMENTS.

REVISIONS	BY	APP	DATE
New Figure	MH	JDW	11-04
Add W20-1, work area dimension	JDL	MH	4-13

FIGURE D MULTI-LANE ONE WAY MULTI-LANE CLOSURE

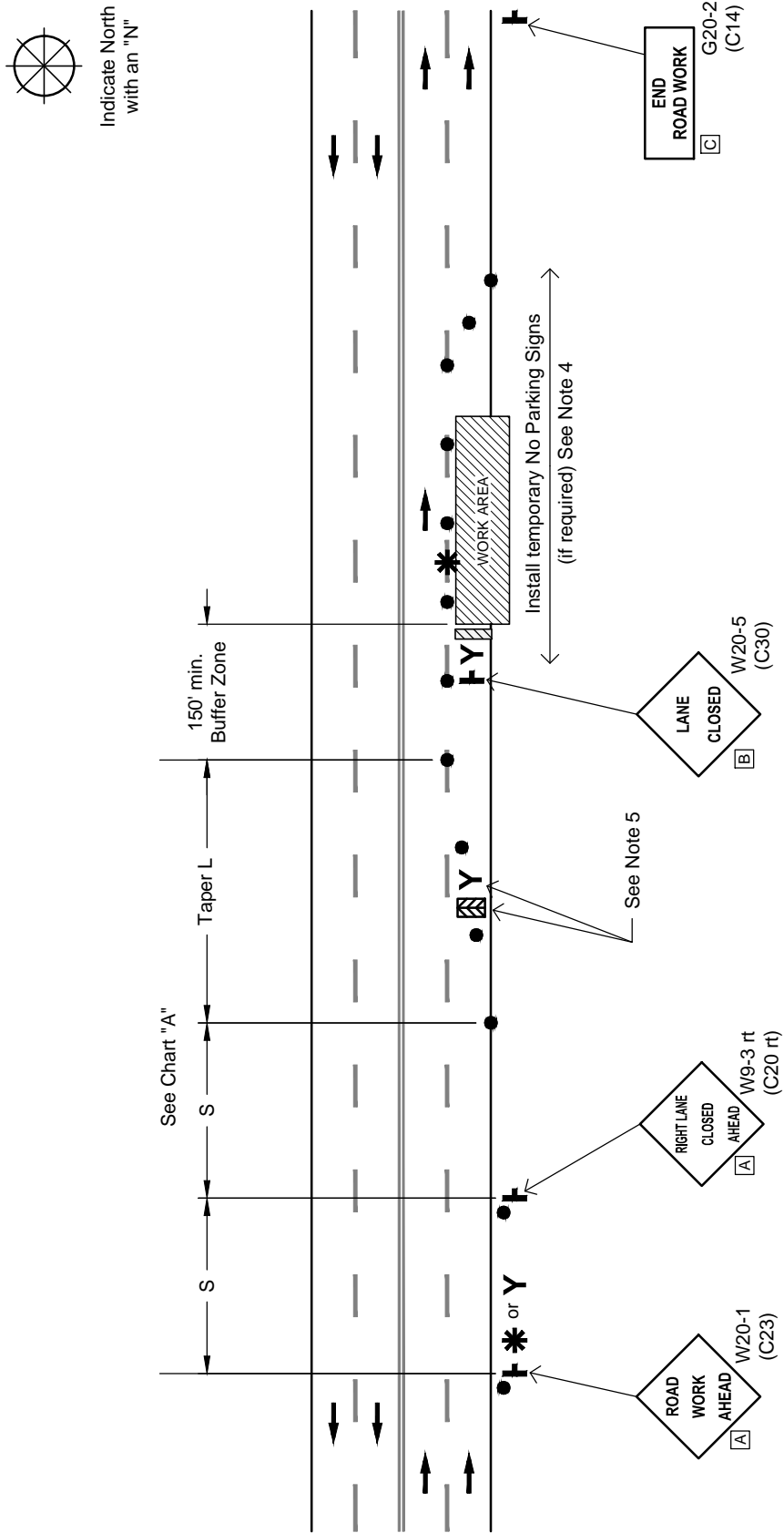
(LEFT AND RIGHT SIDE CLOSURE TO BE SIMILAR)



* SEE PAGE 1 THIS APPENDIX FOR LEGEND, NOTES AND SPACING REQUIREMENTS.

REVISIONS	BY	APP	DATE
New Figure	MH	JDW	11-04
Drafting edits	JDL	MH	4-13

FIGURE E MULTI-LANE OUTSIDE LANE CLOSURE

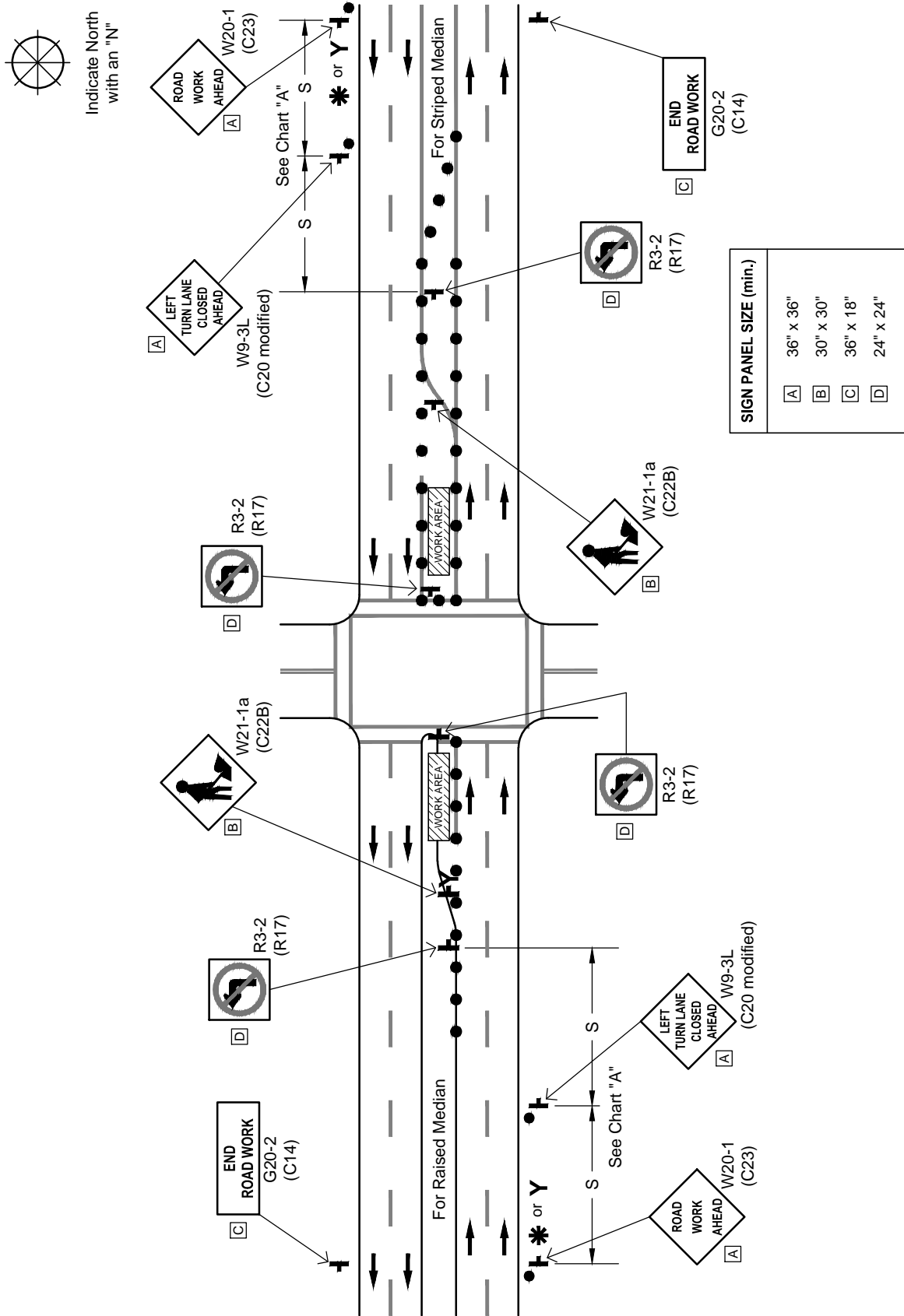


SIGN PANEL SIZE (min.)	
A	36" x 36"
B	30" x 30"
C	36" x 18"

* SEE PAGE 1 THIS APPENDIX FOR LEGEND, NOTES AND SPACING REQUIREMENTS.

REVISIONS	BY	APP	DATE
New Figure	MH	JDW	11-04
Drafting edits	JDL	MH	2-13

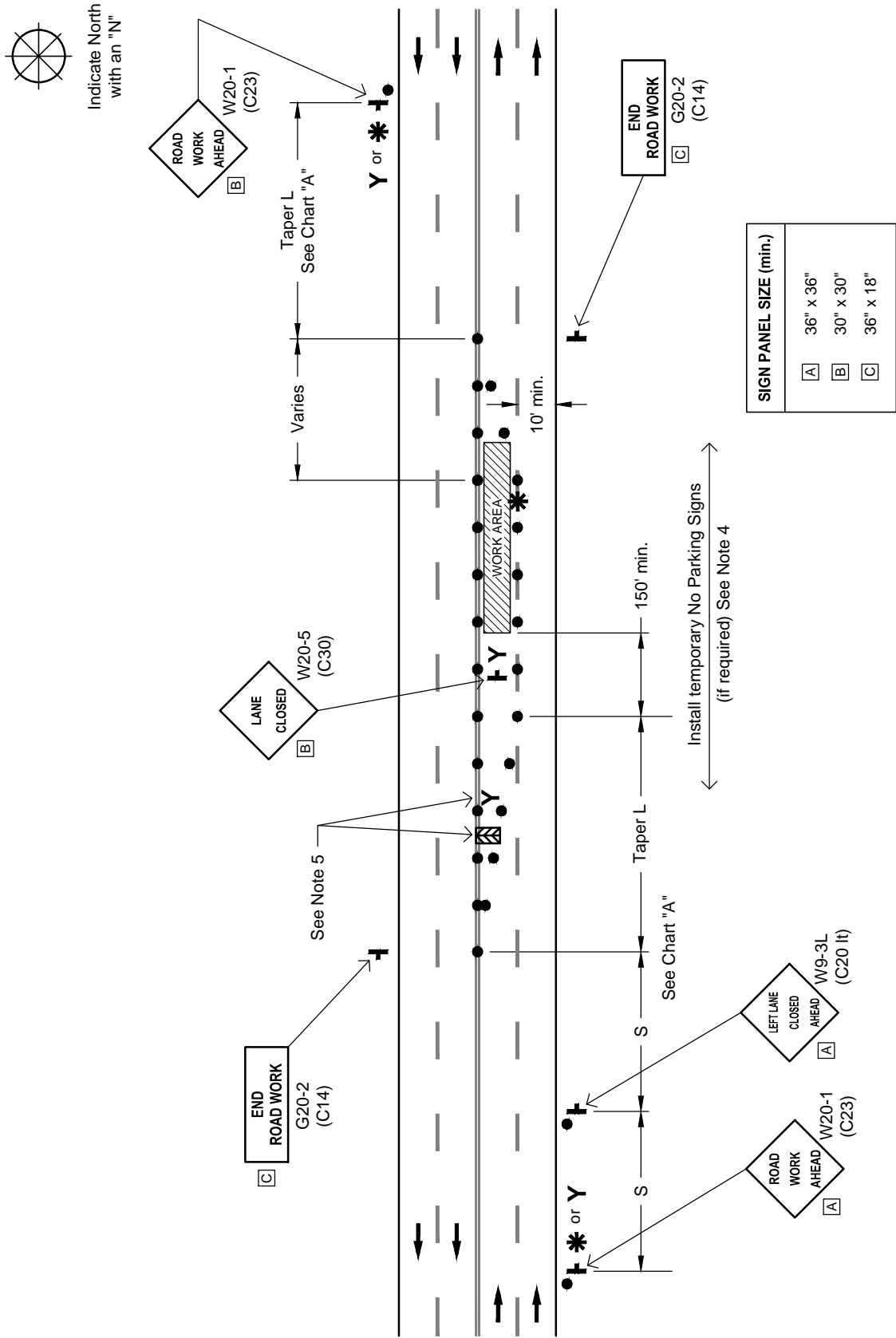
FIGURE F MULTI-LANE LEFT LANE CLOSURE BEYOND INTERSECTION



* SEE PAGE 1 THIS APPENDIX FOR LEGEND, NOTES AND SPACING REQUIREMENTS.

REVISIONS	BY	APP	DATE
New Figure	MH	JDW	11-04
Drafting edits	JDL	MH	2-13

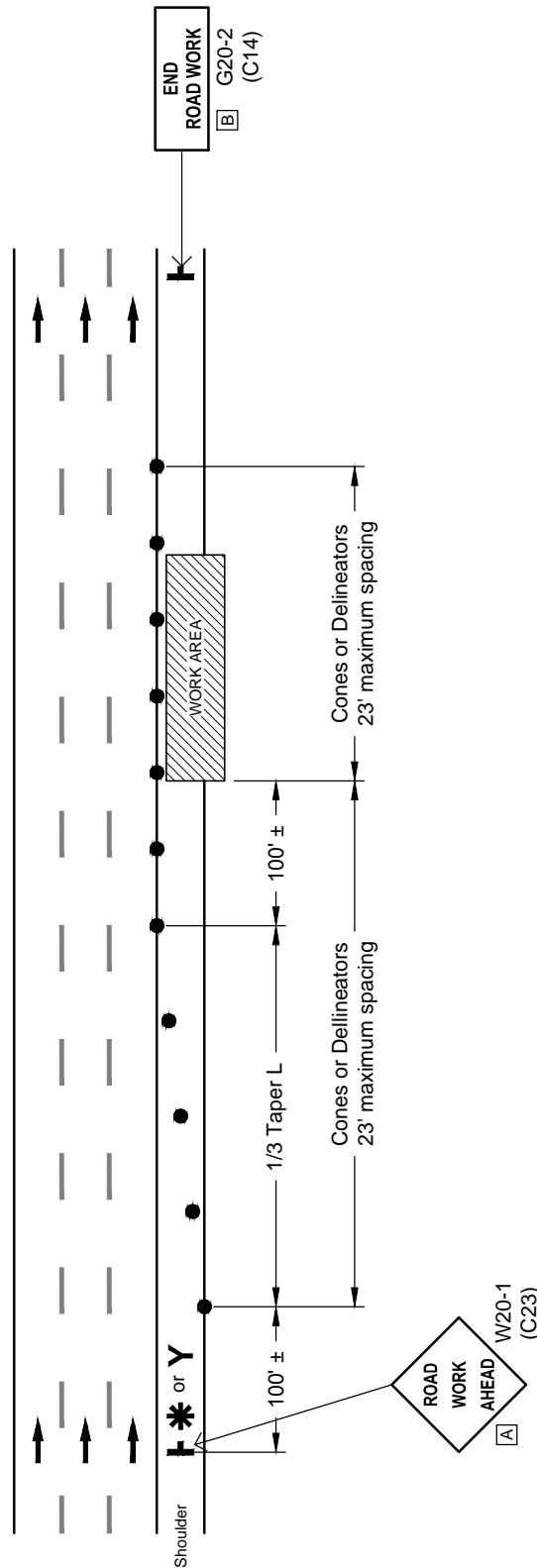
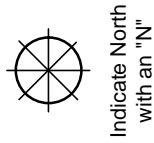
FIGURE G MULTI-LANE INSIDE LANE CLOSURE



* SEE PAGE 1 THIS APPENDIX FOR LEGEND, NOTES AND SPACING REQUIREMENTS.

REVISIONS	BY	APP	DATE
New Figure	MH	JDW	11-04
10' minimum lane; Drafting edits	JDL	MH	4-13

FIGURE H MULTI-LANE WORK WITHIN SHOULDER

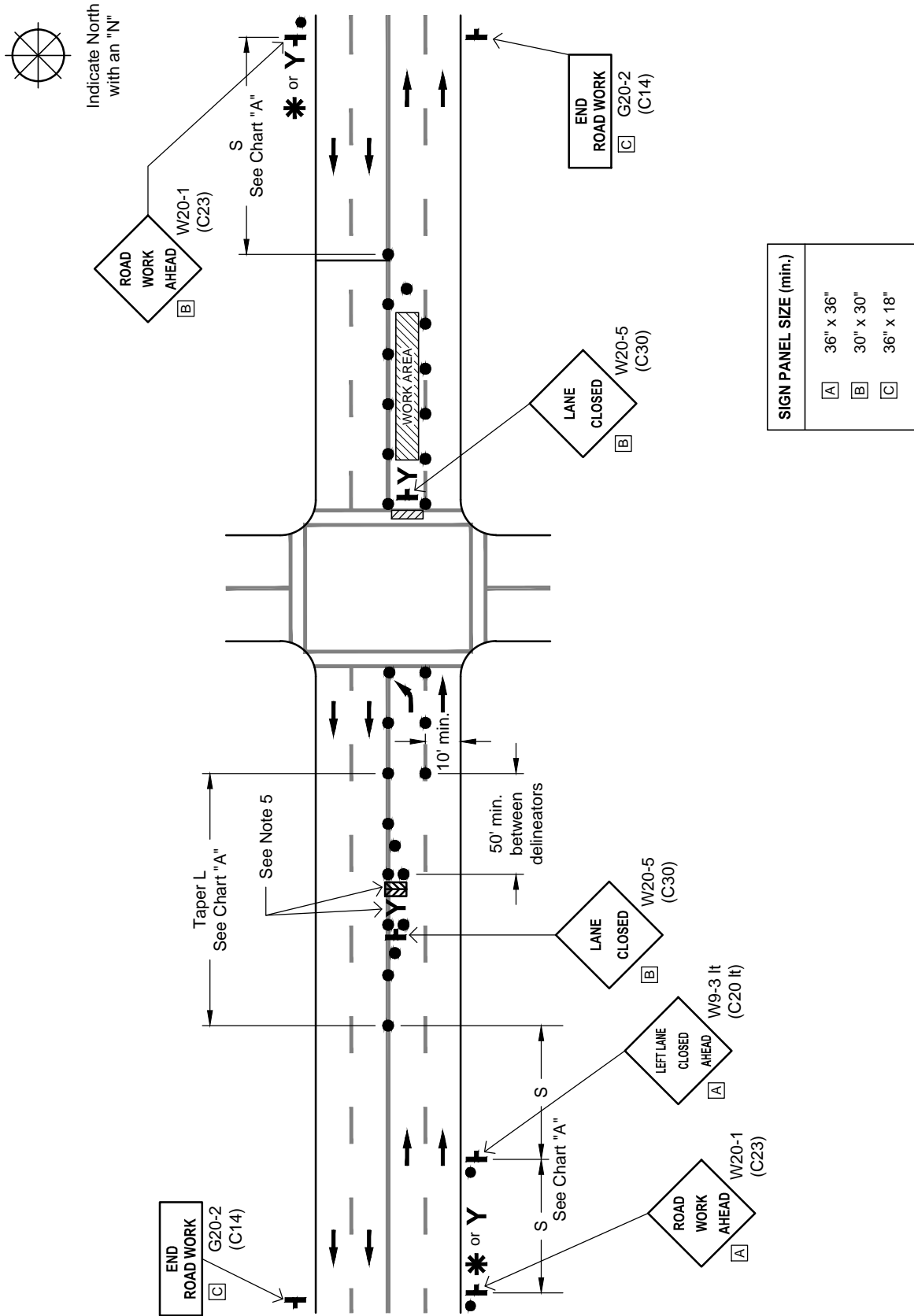


SIGN PANEL SIZE (min.)	
A	36" x 36"
B	36" x 18"

* SEE PAGE 1 THIS APPENDIX FOR LEGEND, NOTES AND SPACING REQUIREMENTS.

REVISIONS	BY	APP	DATE
New Figure	MH	JDW	11-04
Drafting edits	JDL	MH	3-13

FIGURE I MULTI-LANE INSIDE LANE CLOSURE BEYOND INTERSECTION



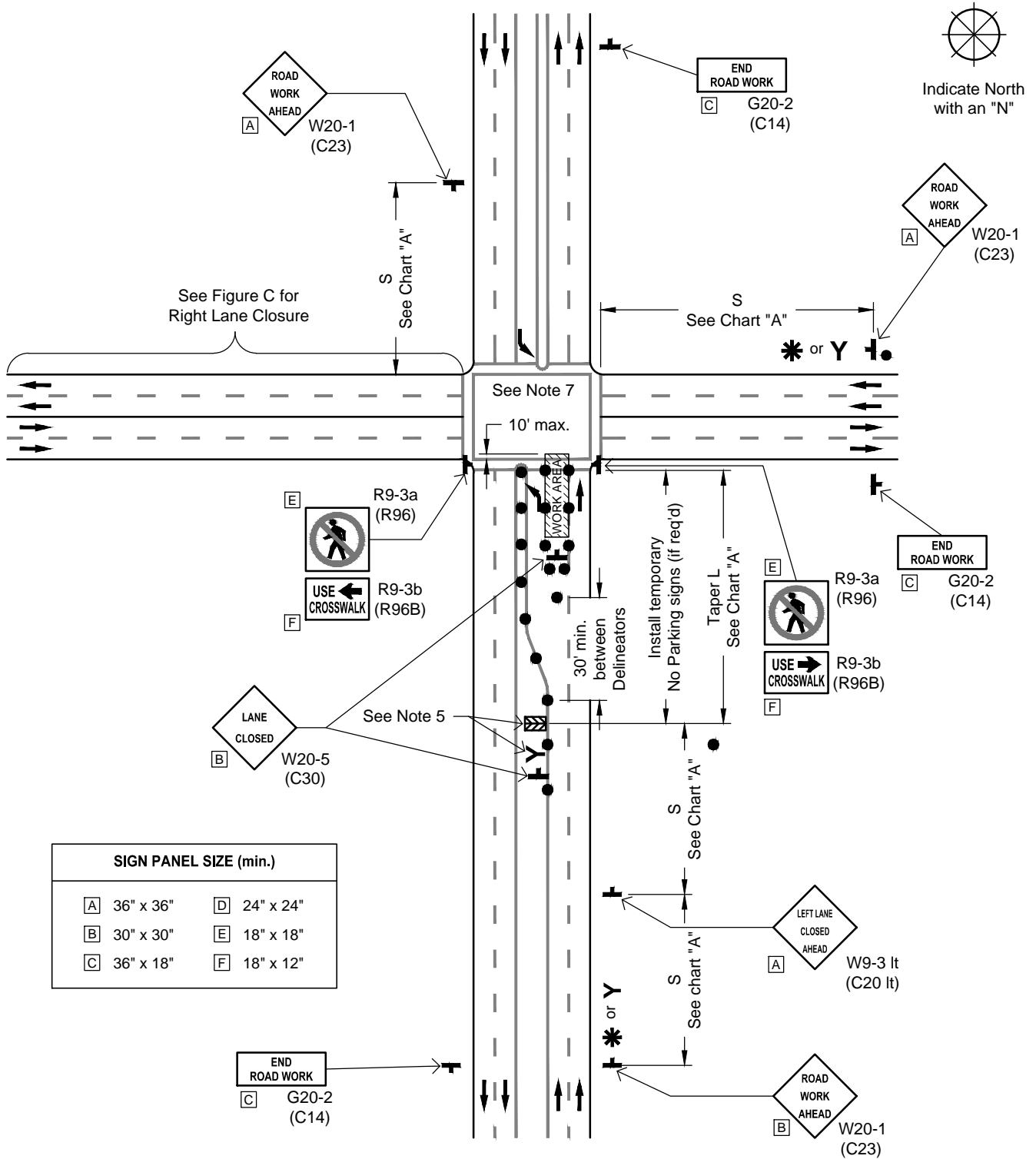
* SEE PAGE 1 THIS APPENDIX FOR LEGEND, NOTES AND SPACING REQUIREMENTS.

REVISIONS	BY	APP	DATE
New Figure	MH	JDW	11-04
Add Type III Barricade; drafting	JDL	MH	4-13

GUIDELINES FOR CONSTRUCTION ZONES

Engineering Standards - Appendix G

FIGURE J MULTI-LANE INSIDE LANE CLOSURE AT INTERSECTION



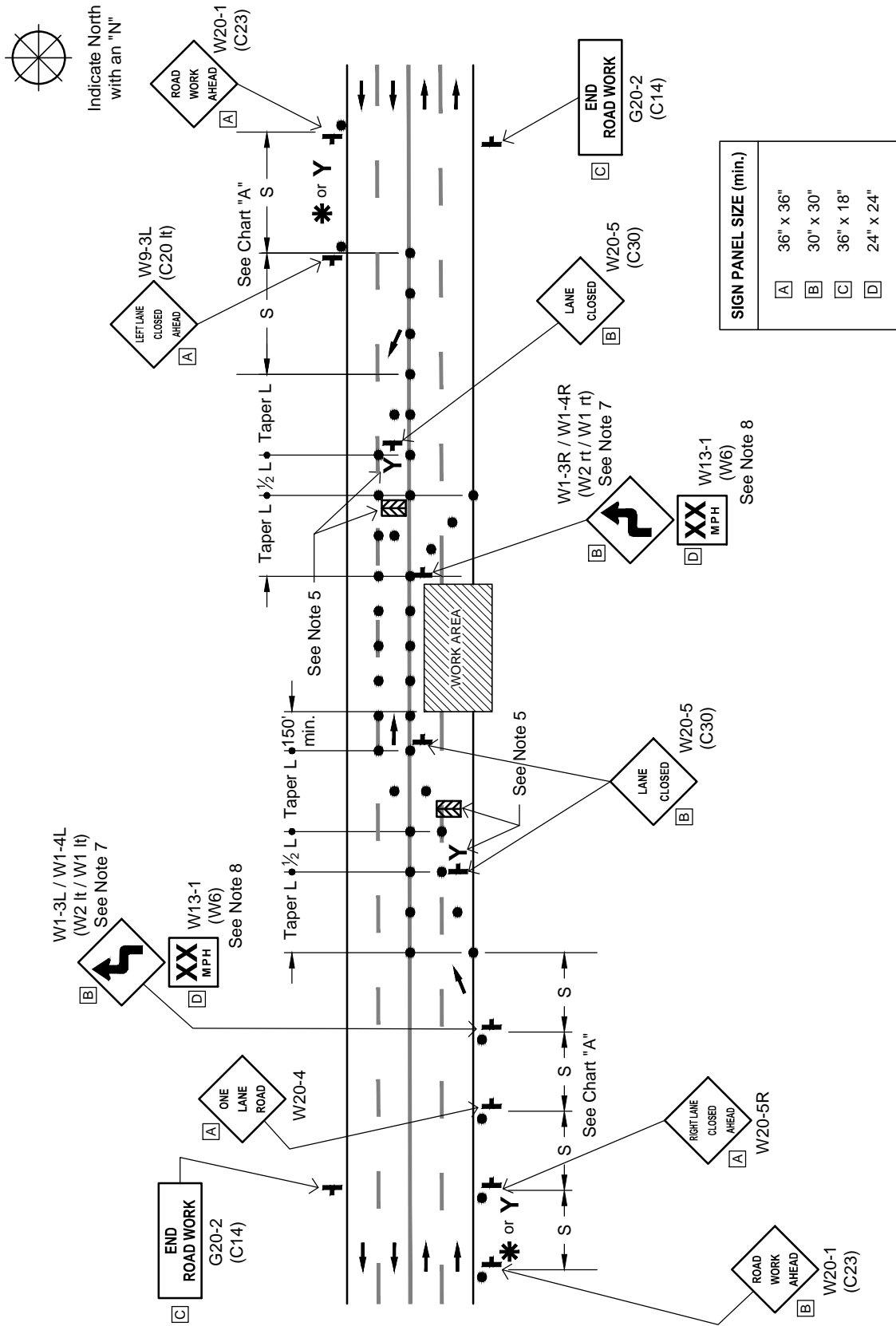
* SEE PAGE 1 THIS APPENDIX FOR LEGEND, NOTES AND SPACING REQUIREMENTS.

REVISIONS	BY	APP	DATE
New Figure	MH	JDW	11-04
Drafting edits	JDL	MH	4-13

GUIDELINES FOR CONSTRUCTION ZONES

Engineering Standards - Appendix G

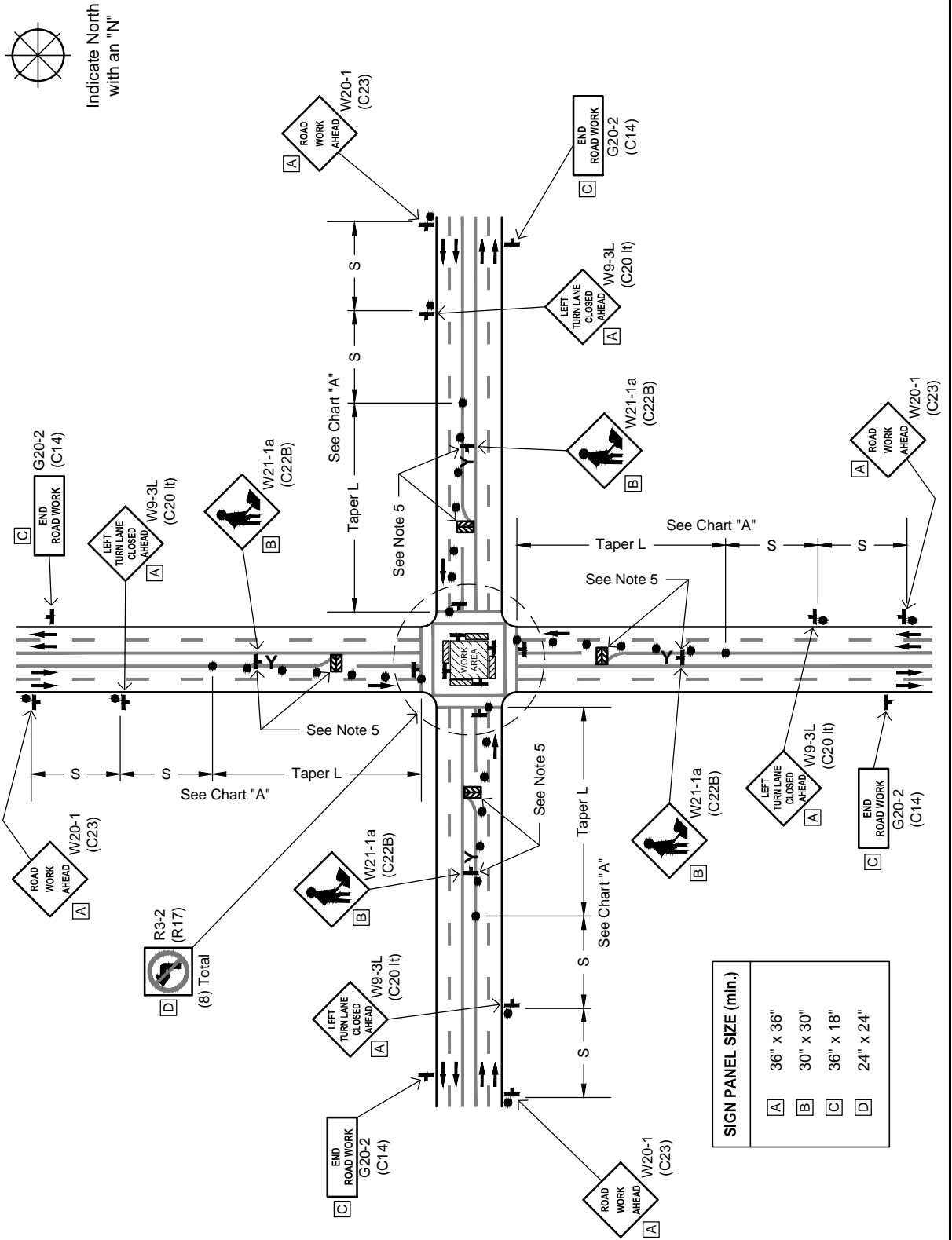
**FIGURE K
MULTI-LANE
CLOSING OF HALF ROAD**



* SEE PAGE 1 THIS APPENDIX FOR LEGEND, NOTES AND SPACING REQUIREMENTS.

REVISIONS	BY	APP	DATE
New Figure	MH	JDW	11-04
Right Lane Closed sign; drafting	JDL	MH	4-13

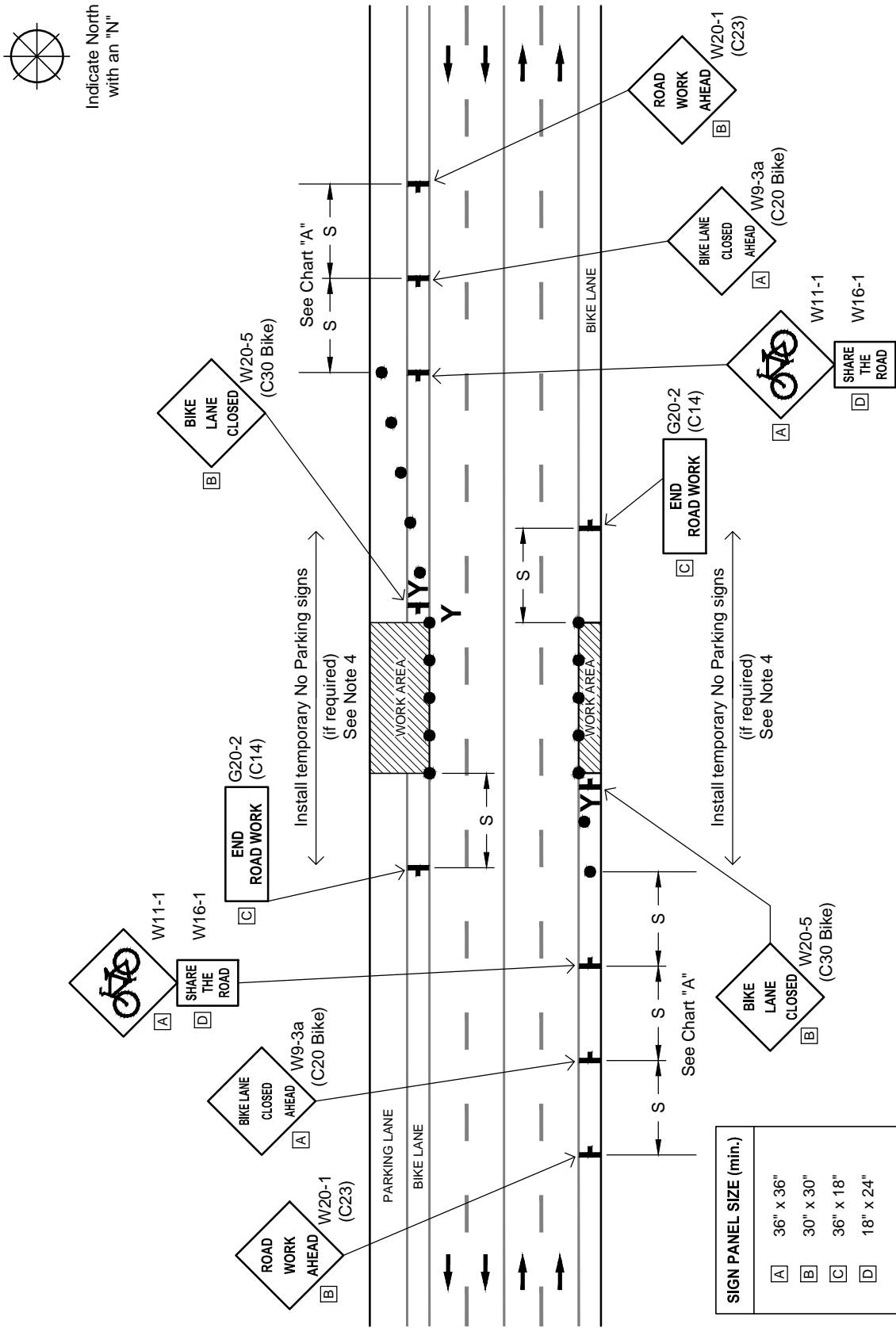
FIGURE L MULTI-LANE WORK WITHIN INTERSECTION



* SEE PAGE 1 THIS APPENDIX FOR LEGEND, NOTES AND SPACING REQUIREMENTS.

REVISIONS	BY	APP	DATE
New Figure	MH	JDW	11-04
Type III Barricade instead of cones	JDL	MH	4-13

FIGURE M
BICYCLE LANE CLOSURE

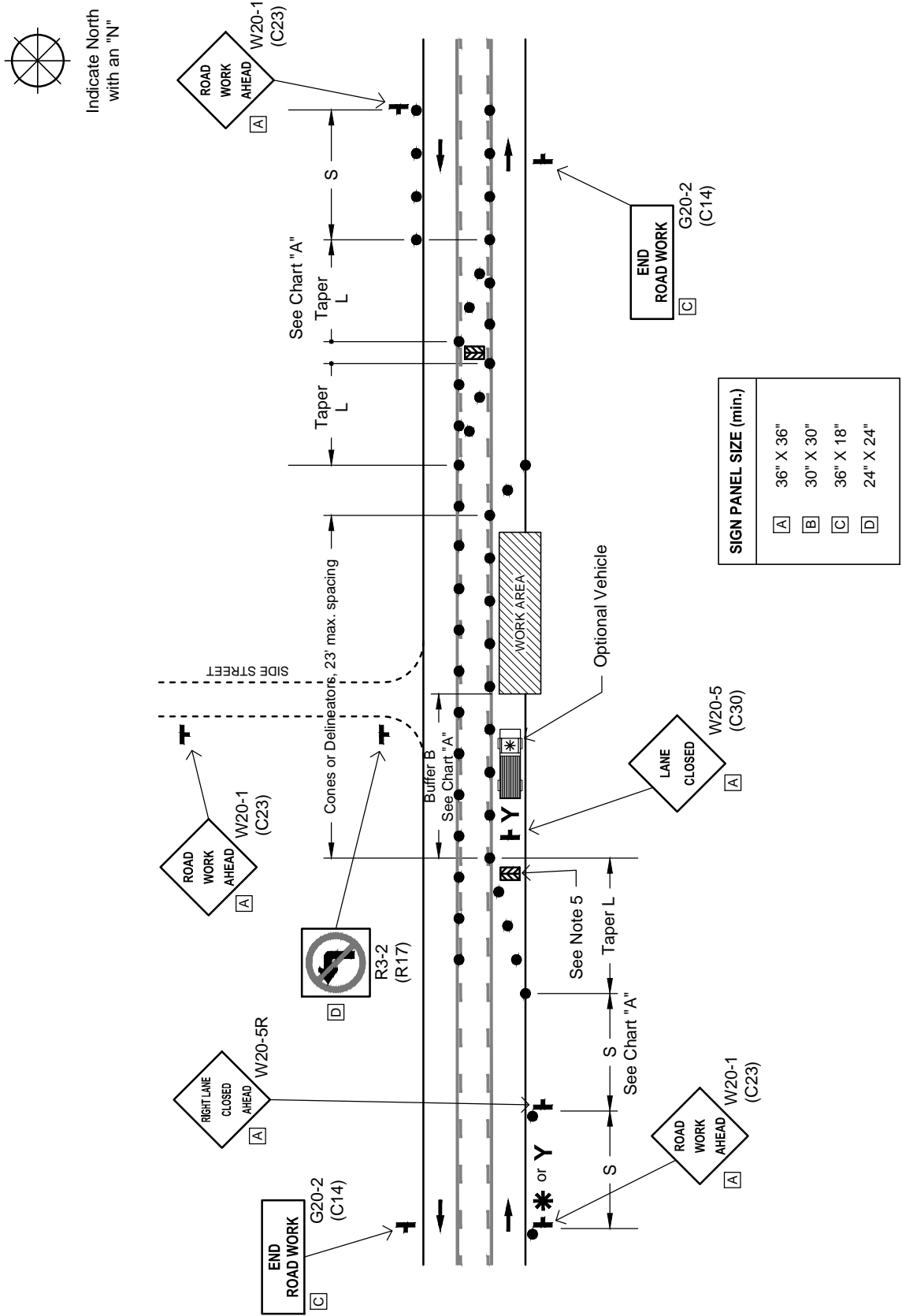


SIGN PANEL SIZE (min.)	
A	36" x 36"
B	30" x 30"
C	36" x 18"
D	18" x 24"

* SEE PAGE 1 THIS APPENDIX FOR LEGEND, NOTES AND SPACING REQUIREMENTS.

REVISIONS	BY	APP	DATE
New Figure	MH	JDW	11-04
Drafting edits	JDL	MH	4-13

FIGURE N TWO-LANE TWO WAY LEFT TURN LANE ONE WAY CLOSURE

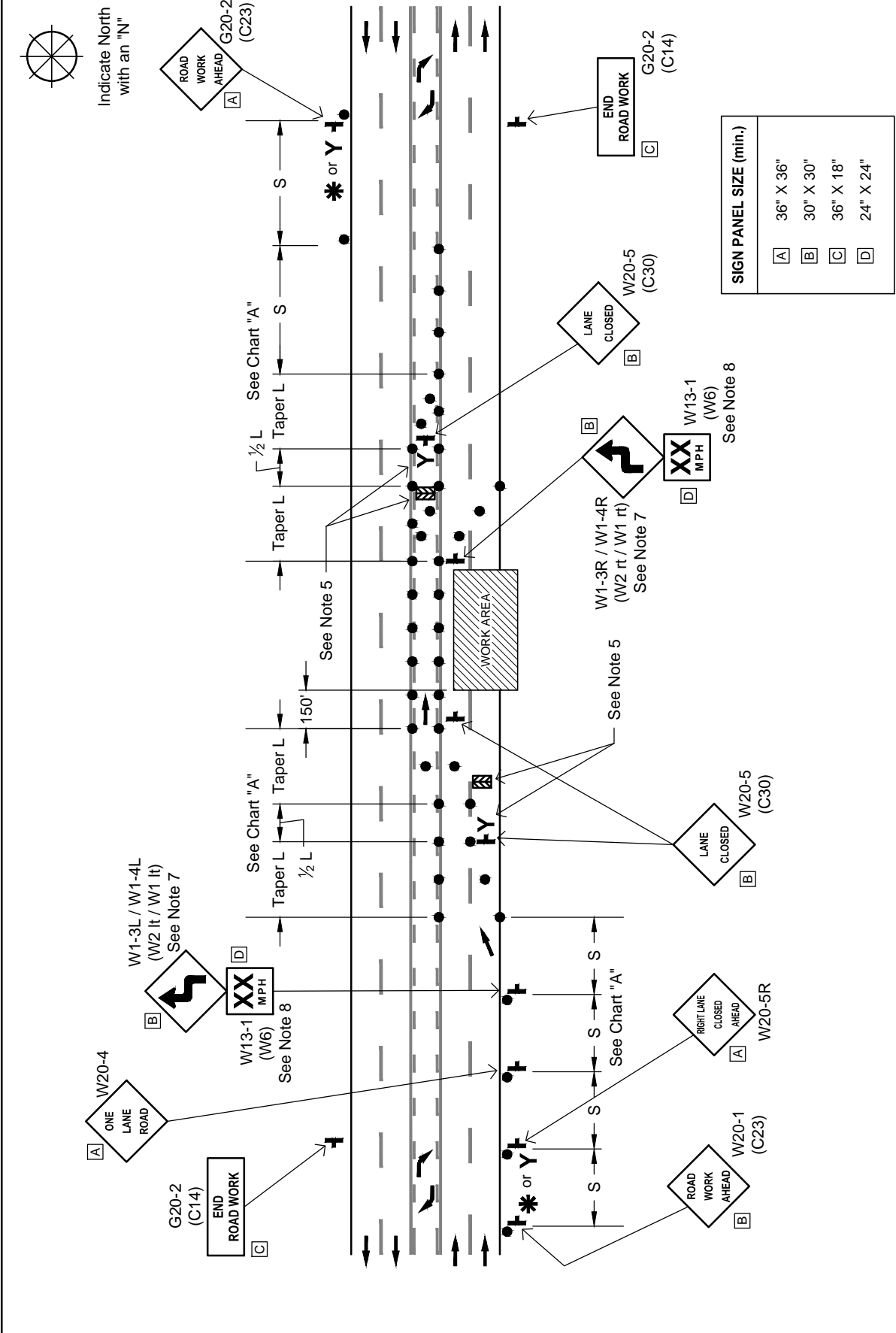


* SEE PAGE 1 THIS APPENDIX FOR LEGEND, NOTES AND SPACING REQUIREMENTS.

REVISIONS	BY	APP	DATE
New Figure	MH	JDW	11-04
Drafting edits	JDL	MH	4-13

FIGURE O

MULTI-LANE TWO WAY LEFT TURN LANE CLOSING OF HALF ROAD



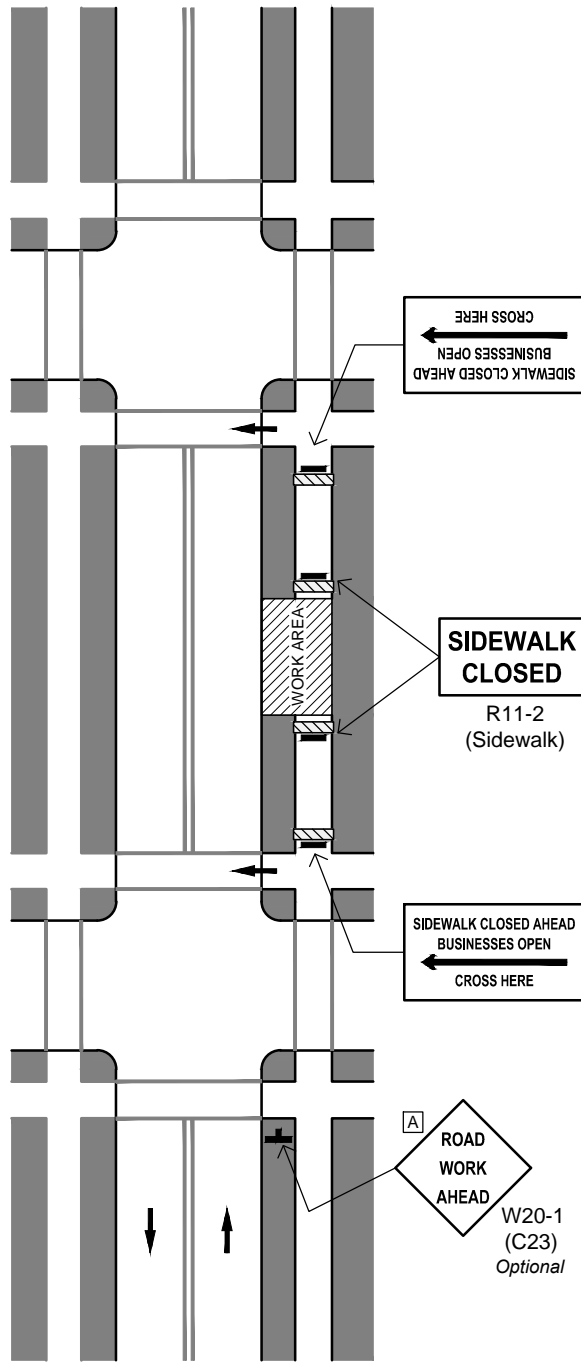
* SEE PAGE 1 THIS APPENDIX FOR LEGEND, NOTES AND SPACING REQUIREMENTS.

REVISIONS	BY	APP	DATE
New Figure	MH	JDW	11-04
W20-5R sign; Drafting edits	JDL	MH	4-13

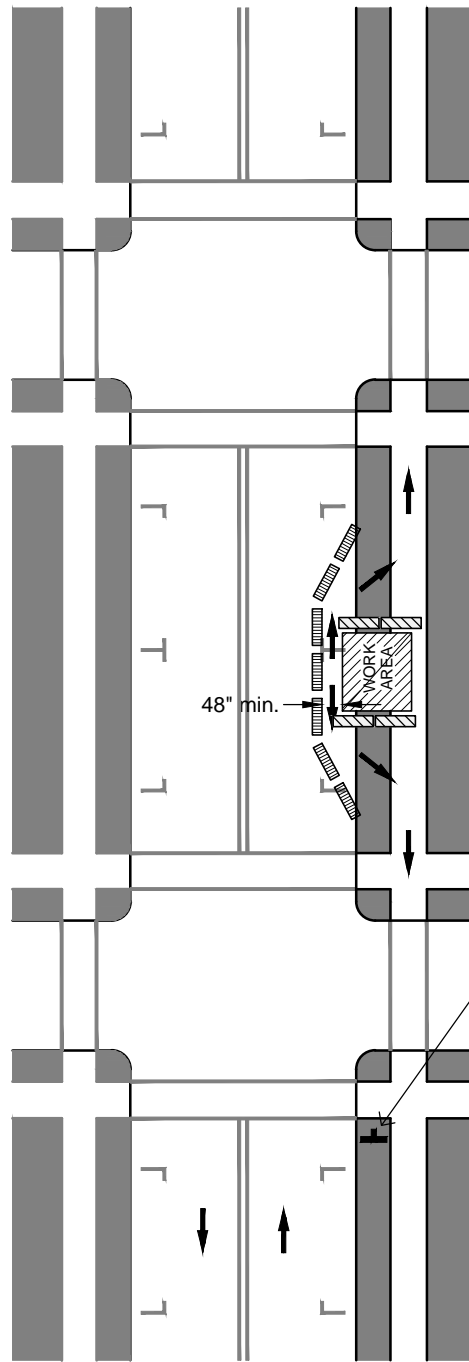
FIGURE P SIDEWALK CLOSURE



Indicate North with an "N"



SIDEWALK DETOUR
DETAIL 1



SIDEWALK DIVERSION
DETAIL 2

SIGN PANEL SIZE (min.)	
A	36" X 36"
B	30" X 30"
C	36" X 18"
D	10" X 24"

NOTE: TEMPORARY PEDESTRIAN ACCESS PATHWAYS SHALL COMPLY WITH ADA AND SHALL INCLUDE RAMPS AND HANDRAILS AS PER THE CALIFORNIA UNIFORM BUILDING CODE REQUIREMENT.

California MUTCD

REVISIONS	BY	APP	DATE
Add Detail Note	MH	BL	11-09
Drafting edits	JDL	MH	4-13

GUIDELINES FOR CONSTRUCTION ZONES

Engineering Standards - Appendix G