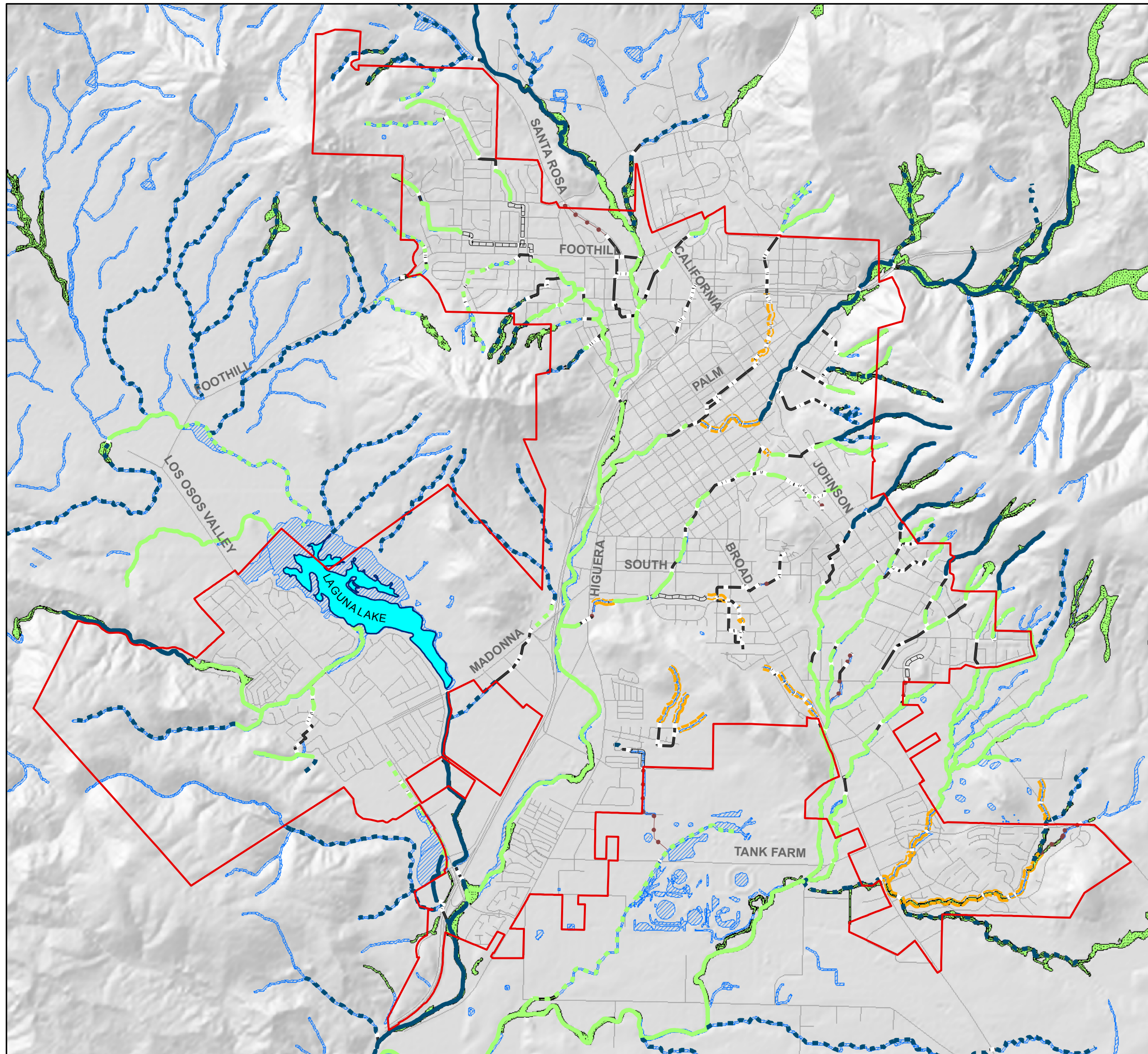




Figure 9: Creeks and Wetlands



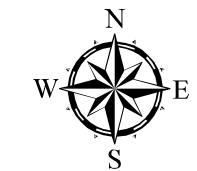
- City Limit
- Riparian Habitats
- Wetland Habitats
- Creeks**
- Perennial creek with good riparian corridor
- - - Intermittent creek with good riparian corridor
- Perennial creek with degraded corridor but able to be restored or repaired
- - - Intermittent creek with degraded corridor but able to be restored or repaired
- - - Perennial creek with degraded corridor, high encroachment, and difficulty in restoring
- Waterways**
- · · Drainage ditch
- Open concrete swale or channel
- Underground culvert or major bridge

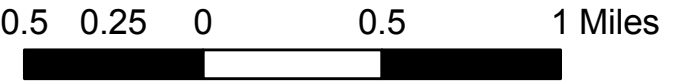


SLO GIS
city of san luis obispo



**city of
san luis obispo**





0.5 0.25 0 0.5 1 Miles