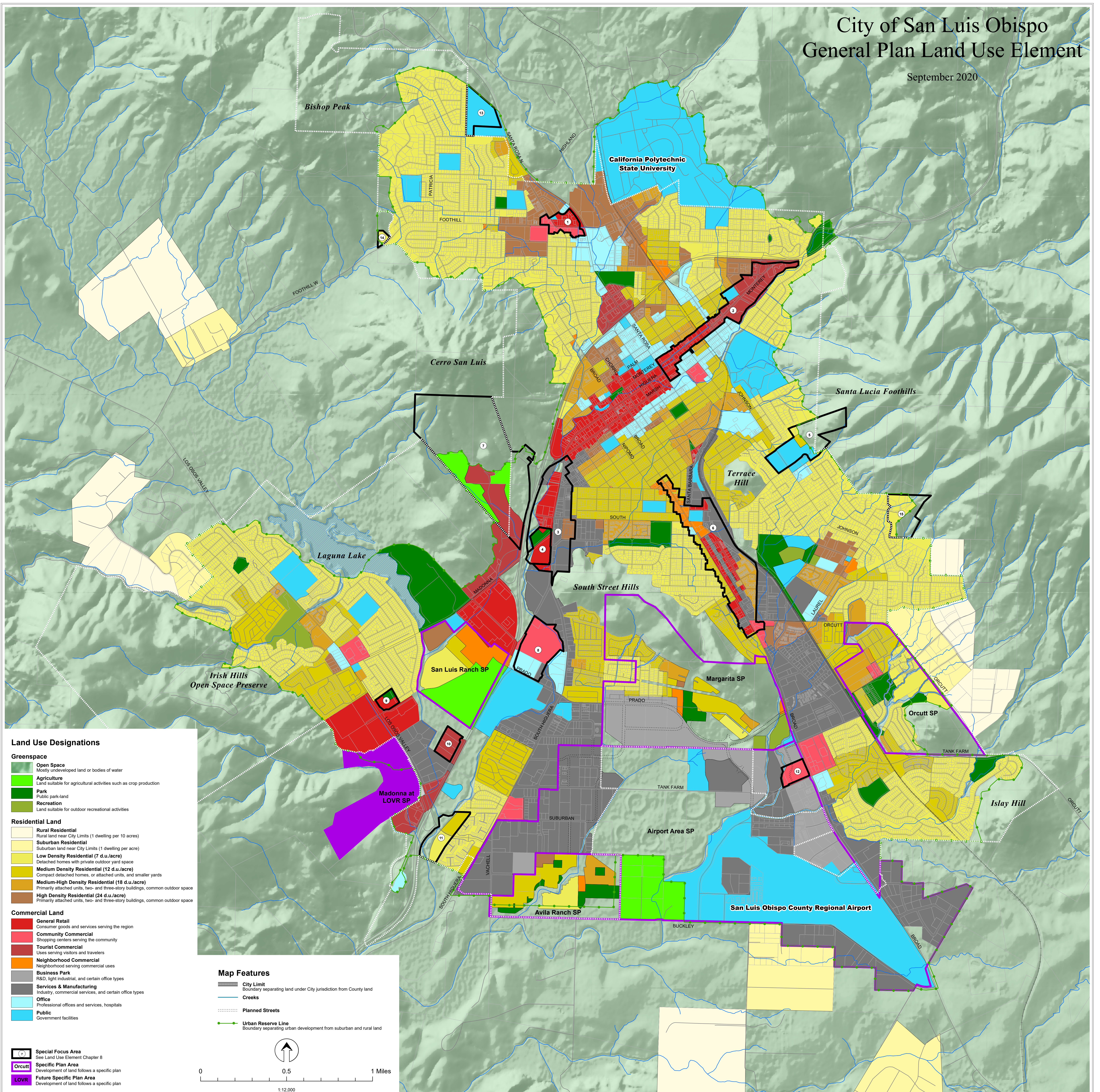


City of San Luis Obispo General Plan Land Use Element

September 2020



Land Use Designations

- Greenspace**
- **Open Space**
Mostly undeveloped land or bodies of water
 - **Agriculture**
Land suitable for agricultural activities such as crop production
 - **Park**
Public park-land
 - **Recreation**
Land suitable for outdoor recreational activities
- Residential Land**
- **Rural Residential**
Rural land near City Limits (1 dwelling per 10 acres)
 - **Suburban Residential**
Suburban land near City Limits (1 dwelling per acre)
 - **Low Density Residential (7 d.u./acre)**
Detached homes with private outdoor yard space
 - **Medium Density Residential (12 d.u./acre)**
Compact detached homes, or attached units, and smaller yards
 - **Medium-High Density Residential (18 d.u./acre)**
Primarily attached units, two- and three-story buildings, common outdoor space
 - **High Density Residential (24 d.u./acre)**
Primarily attached units, two- and three-story buildings, common outdoor space
- Commercial Land**
- **General Retail**
Consumer goods and services serving the region
 - **Community Commercial**
Shopping centers serving the community
 - **Tourist Commercial**
Uses serving visitors and travelers
 - **Neighborhood Commercial**
Neighborhood serving commercial uses
 - **Business Park**
R&D, light industrial, and certain office types
 - **Services & Manufacturing**
Industry, commercial services, and certain office types
 - **Office**
Professional offices and services, hospitals
 - **Public**
Government facilities
- Map Features**
- City Limit**
Boundary separating land under City jurisdiction from County land
 - **Creeks**
 - **Planned Streets**
 - **Urban Reserve Line**
Boundary separating urban development from suburban and rural land

- ? **Special Focus Area**
See Land Use Element Chapter 8
- **Orcutt Specific Plan Area**
Development of land follows a specific plan
- **LOVR Future Specific Plan Area**
Development of land follows a specific plan

