

slo

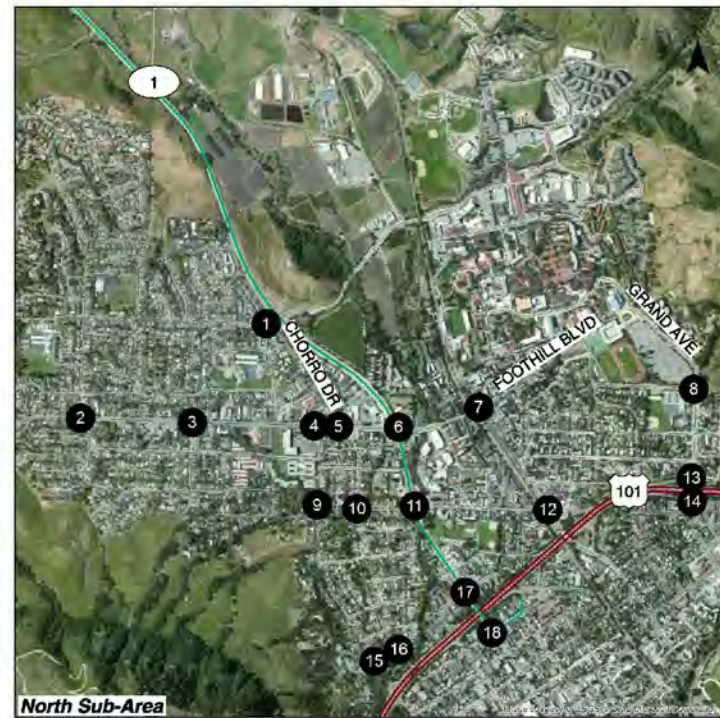
2035



LAND USE &
CIRCULATION
UPDATE

APPENDIX M: LOS GRAPHICS

Please see the next page.



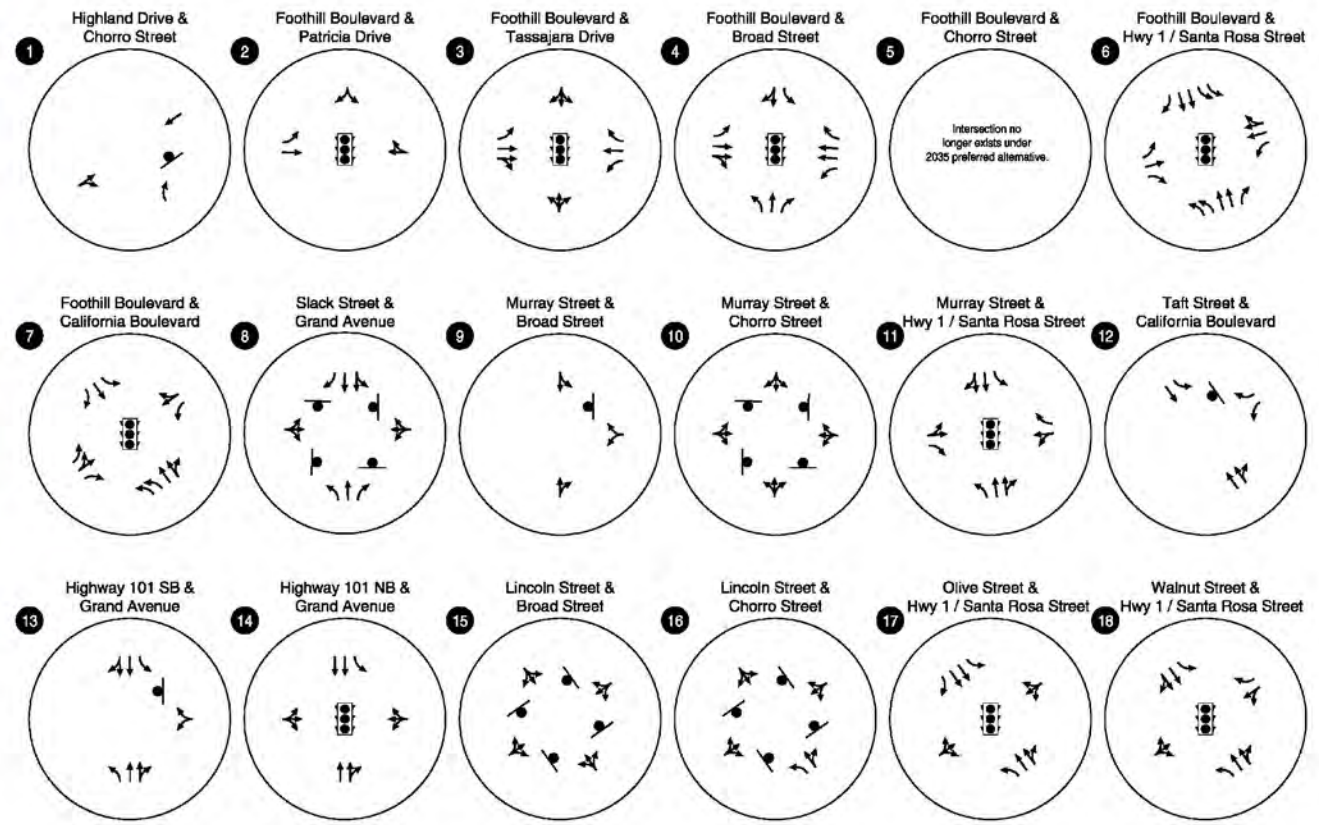
North Sub-Area



City of San Luis Obispo

LEGEND

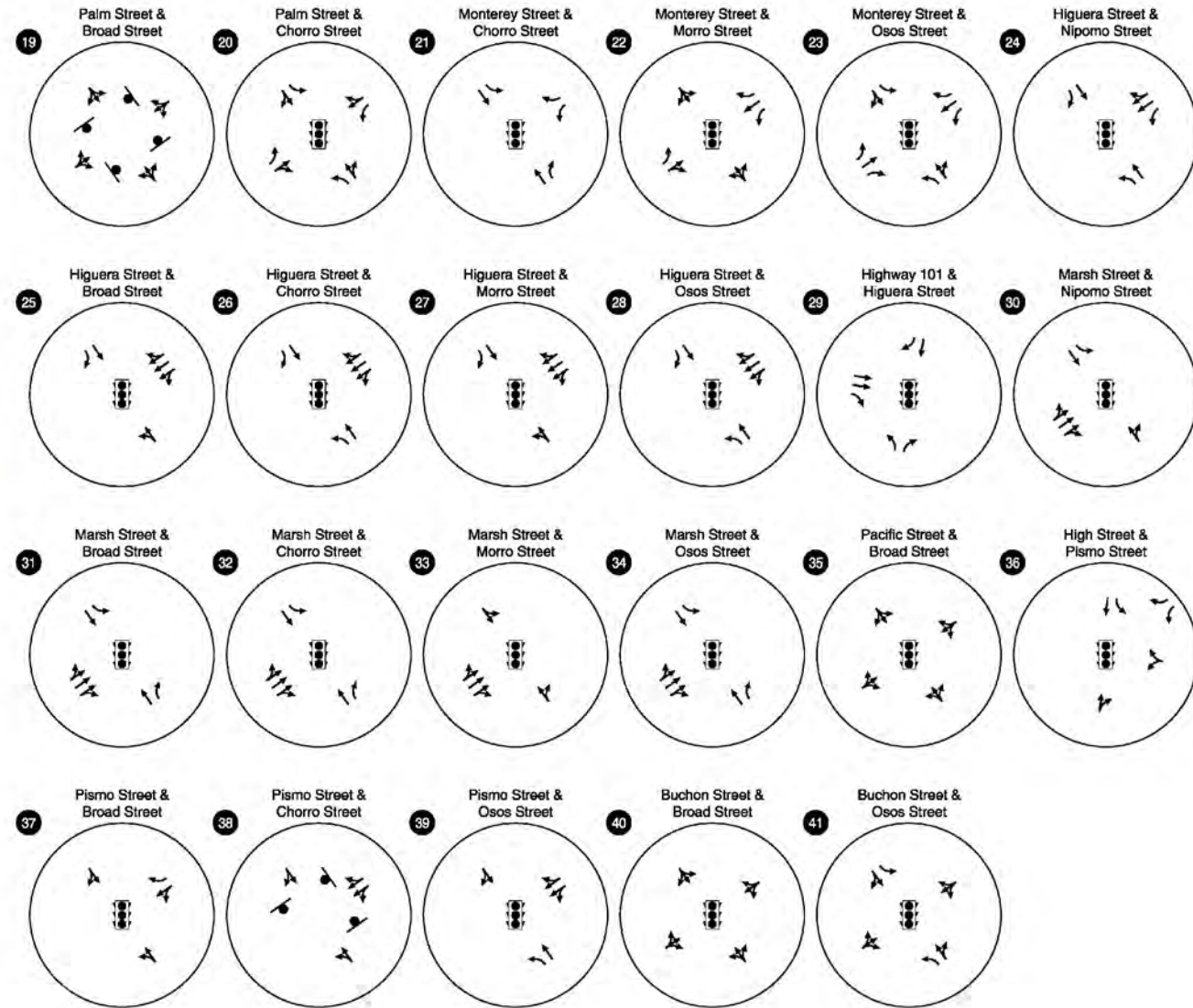
-  - STOP SIGN
-  - TRAFFIC SIGNAL

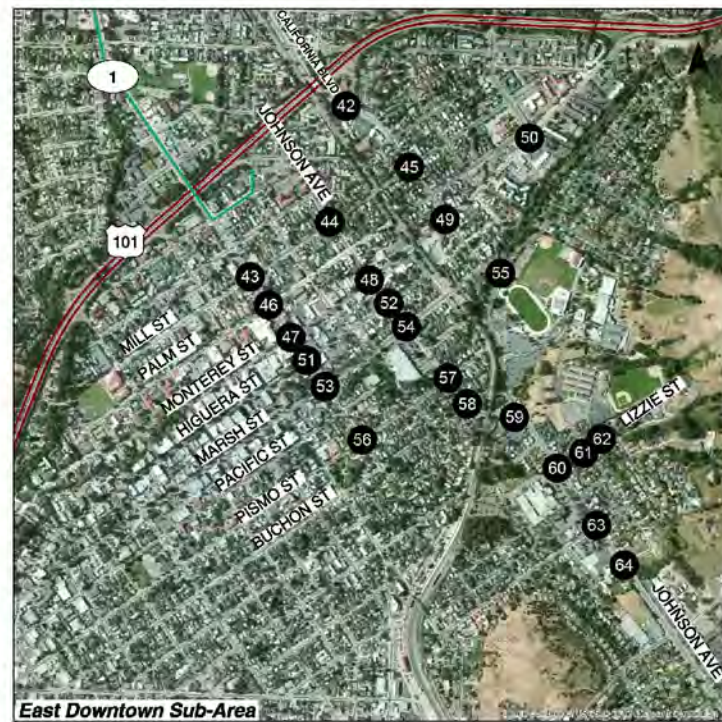






LEGEND

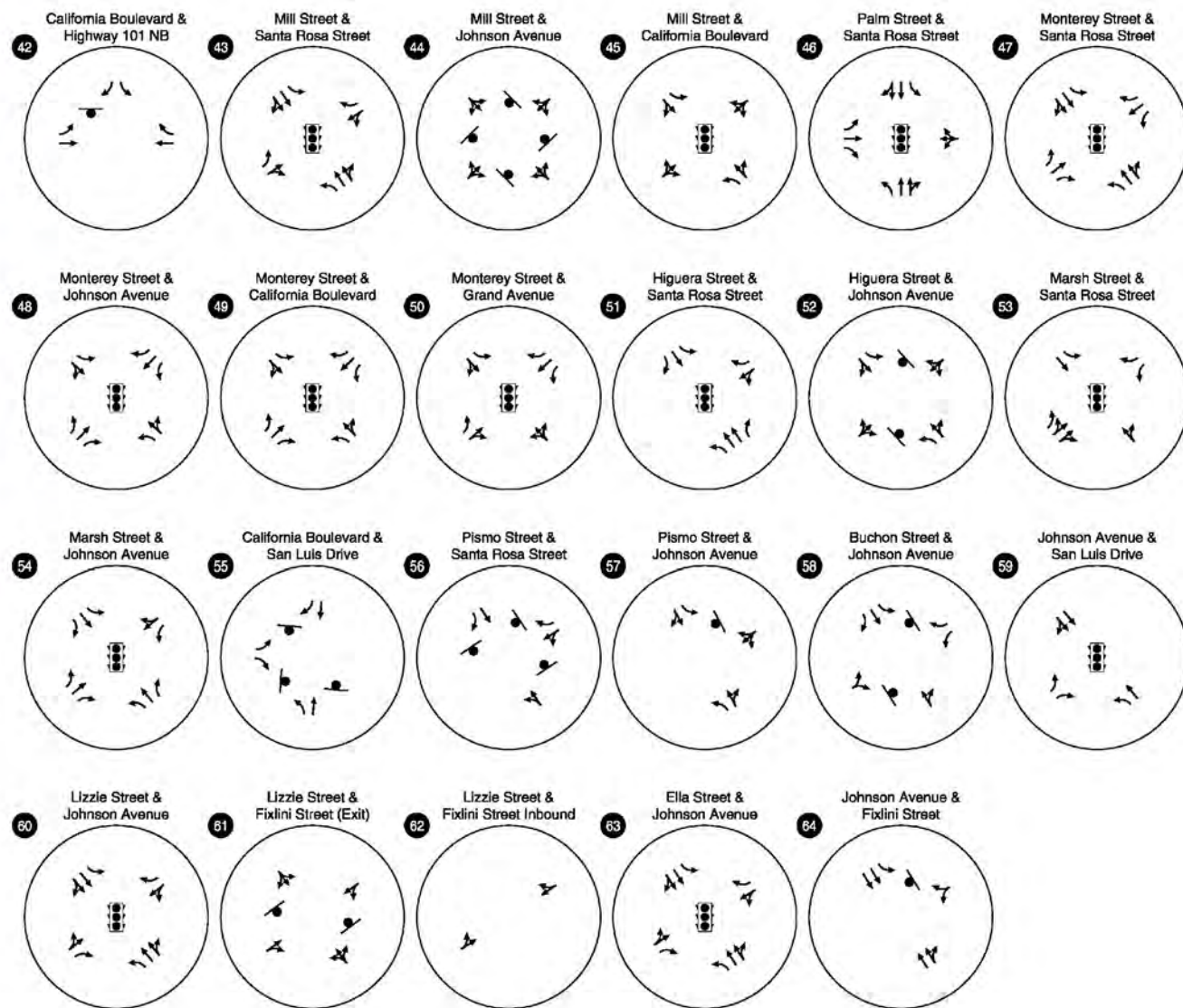
-  - STOP SIGN
-  - TRAFFIC SIGNAL







LEGEND

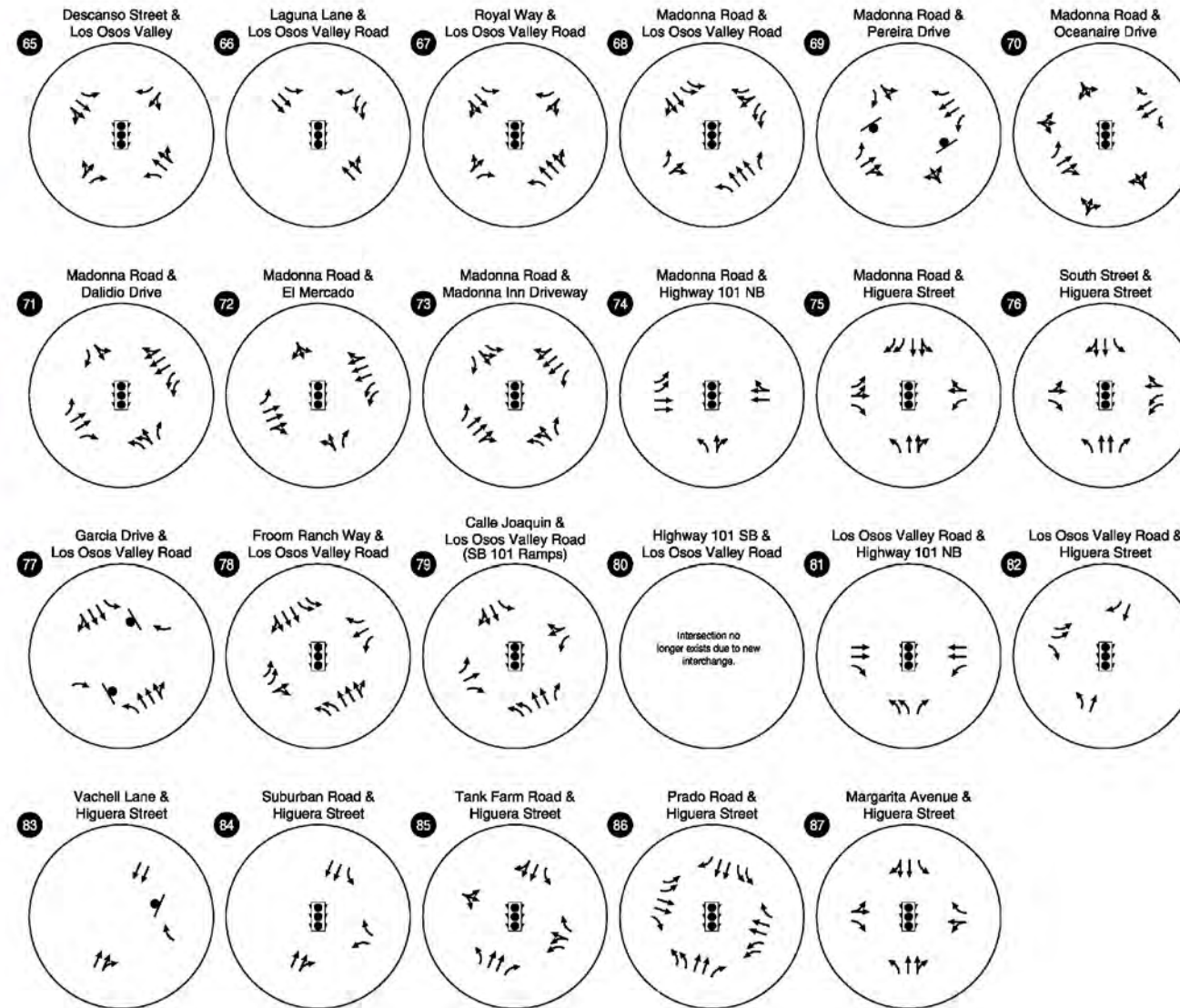
-  - STOP SIGN
-  - TRAFFIC SIGNAL






LEGEND

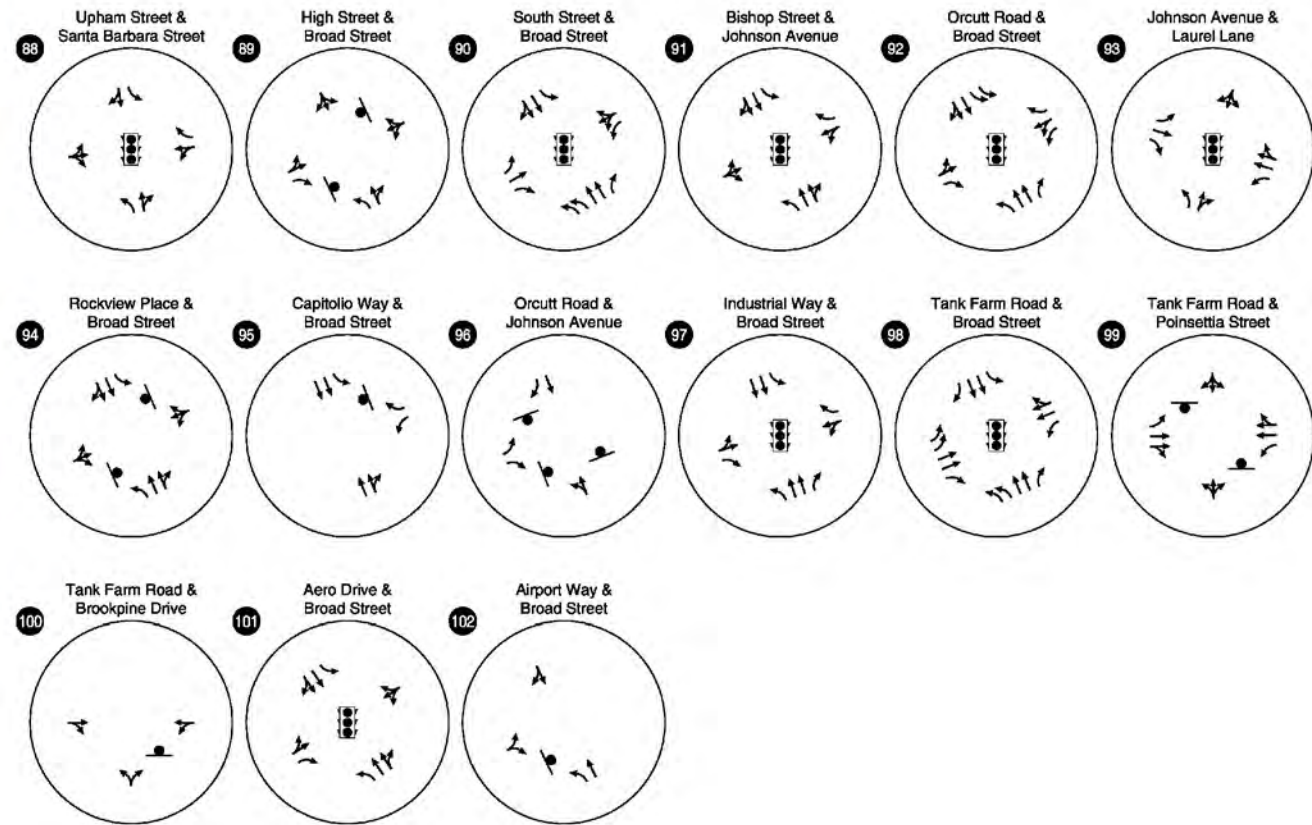
-  - STOP SIGN
-  - TRAFFIC SIGNAL

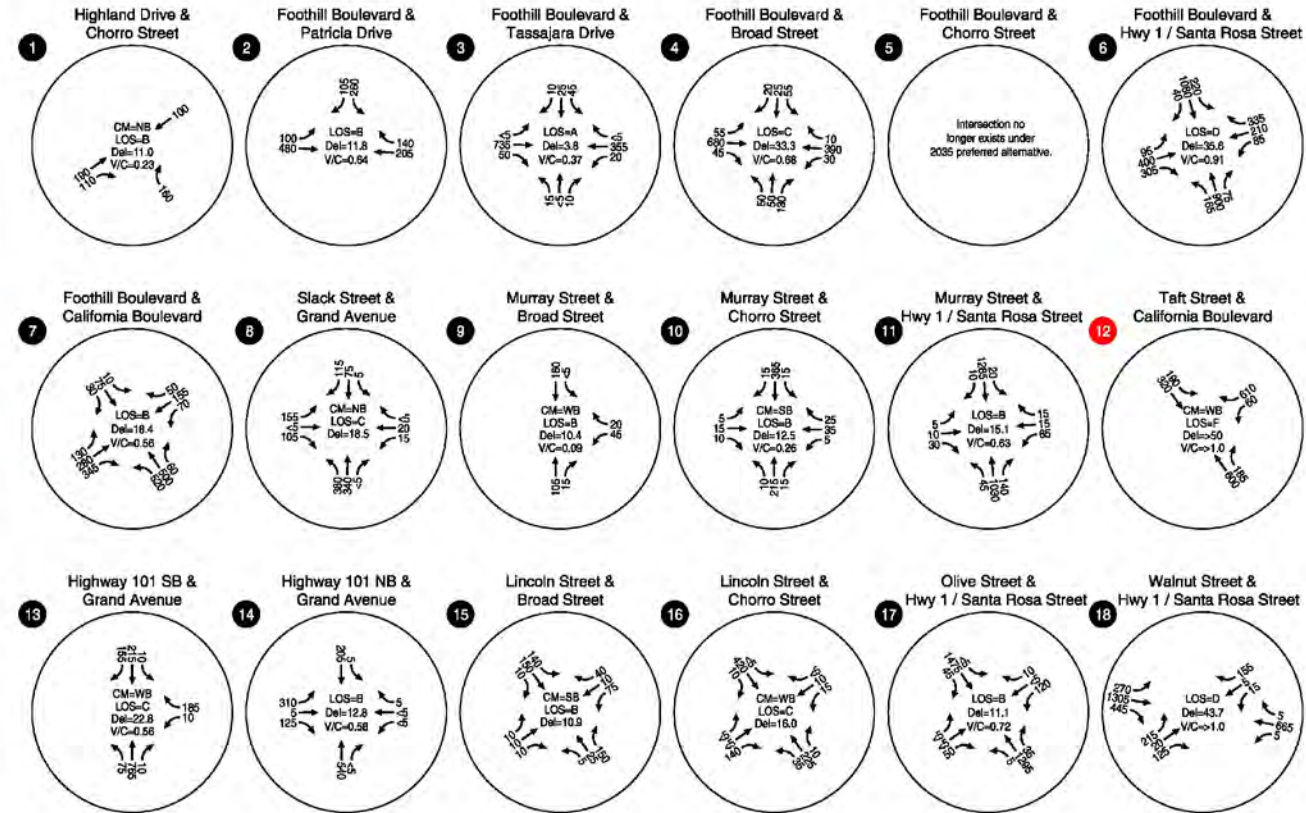




LEGEND

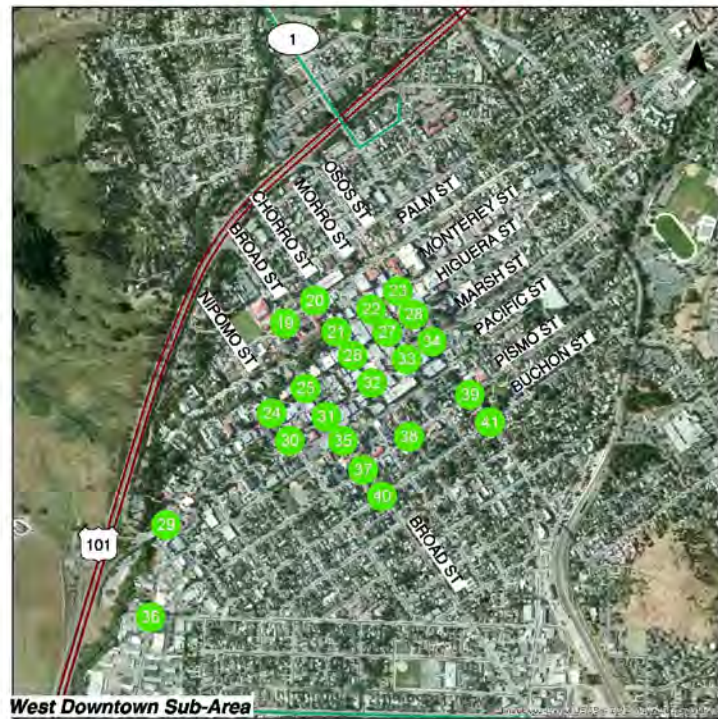
-  - STOP SIGN
-  - TRAFFIC SIGNAL





CM = CRITICAL MOVEMENT (TWSC) ■ LOS OF E OR F
 LOS = INTERSECTION LEVEL OF SERVICE (SIGNALIZED/AWSC)/CRITICAL MOVEMENT LEVEL OF SERVICE (TWSC) ■ LOS OF A-D
 Del = INTERSECTION AVERAGE CONTROL DELAY (SIGNALIZED/AWSC) / CRITICAL MOVEMENT CONTROL DELAY (TWSC)
 V/C = CRITICAL VOLUME-TO-CAPACITY RATIO
 TWSC = TWO-WAY STOP CONTROL
 AWSC = ALL-WAY STOP CONTROL



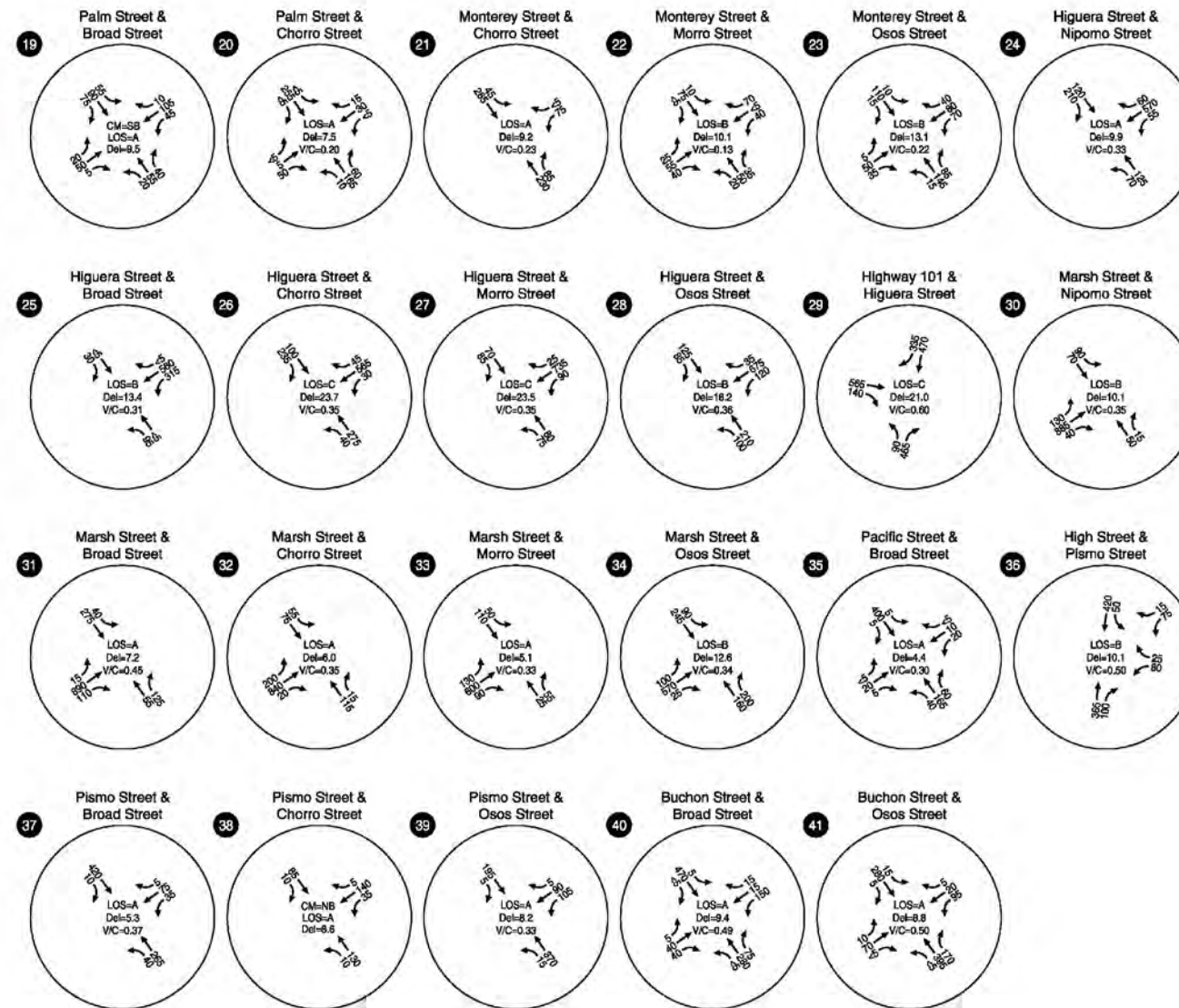


West Downtown Sub-Area



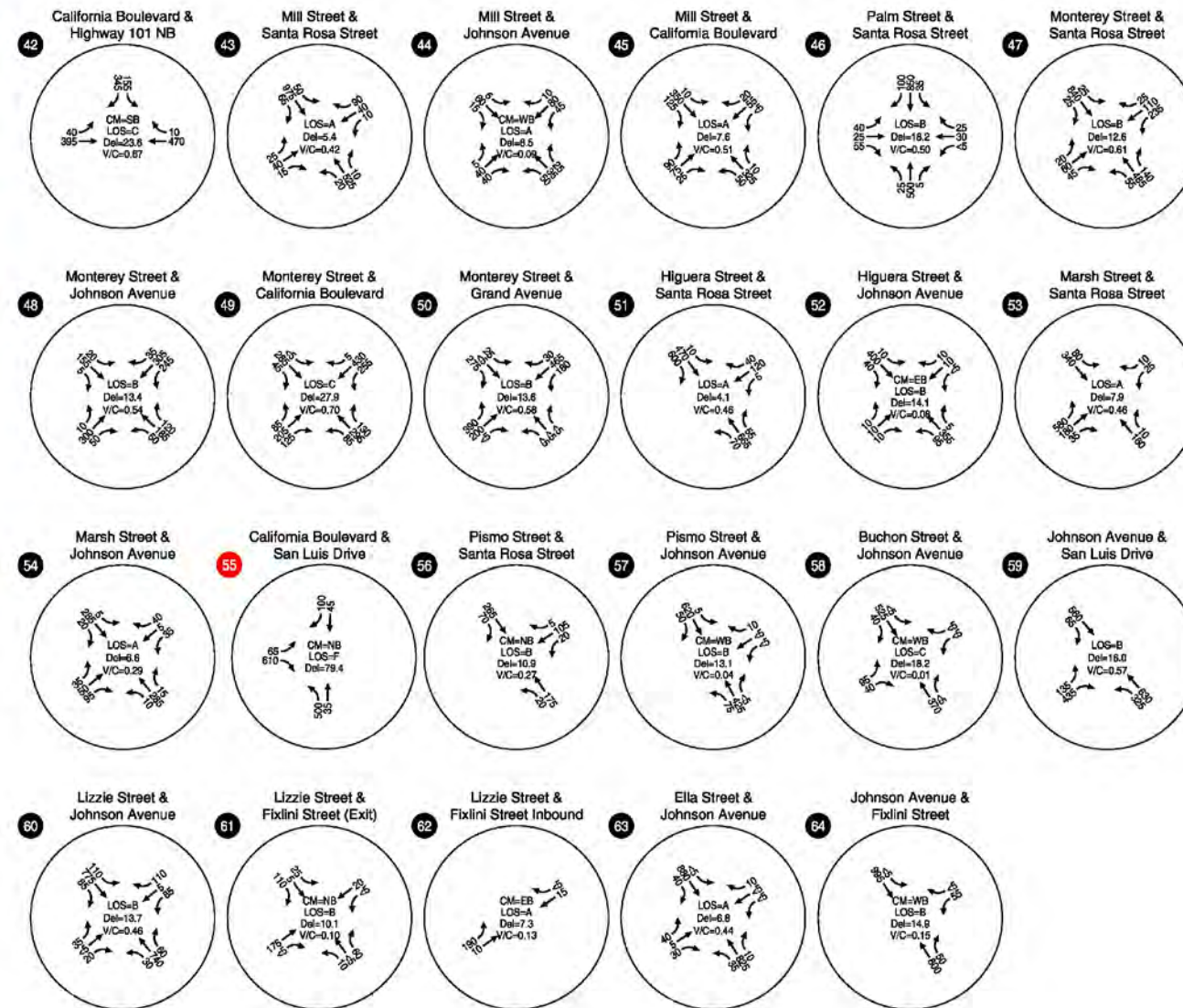
City of San Luis Obispo

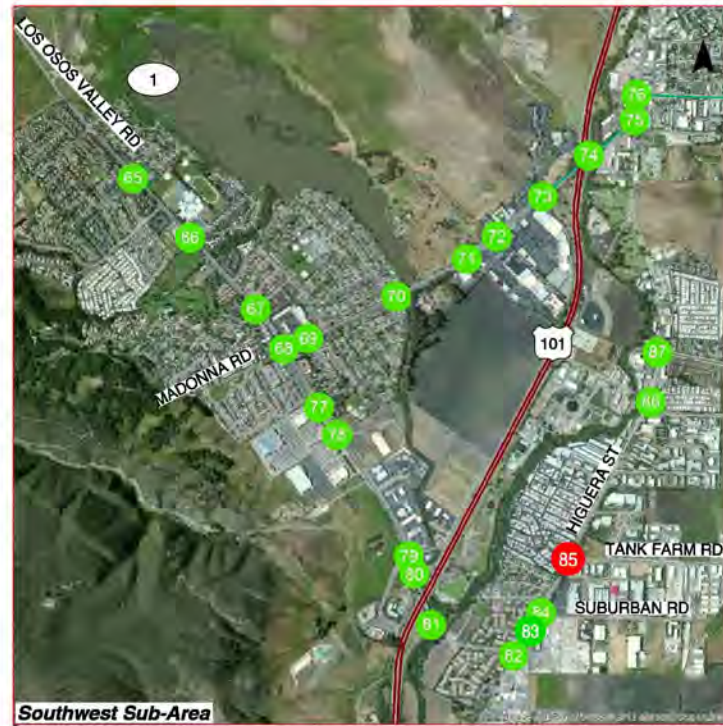
CM = CRITICAL MOVEMENT (TWSC) # LOS OF E OR F
 LOS = INTERSECTION LEVEL OF SERVICE (SIGNALIZED/AWSC)/CRITICAL MOVEMENT LEVEL OF SERVICE (TWSC) # LOS OF A-D
 Del = INTERSECTION AVERAGE CONTROL DELAY (SIGNALIZED/AWSC) / CRITICAL MOVEMENT CONTROL DELAY (TWSC)
 V/C = CRITICAL VOLUME-TO-CAPACITY RATIO
 TWSC = TWO-WAY STOP CONTROL
 AWSC = ALL-WAY STOP CONTROL



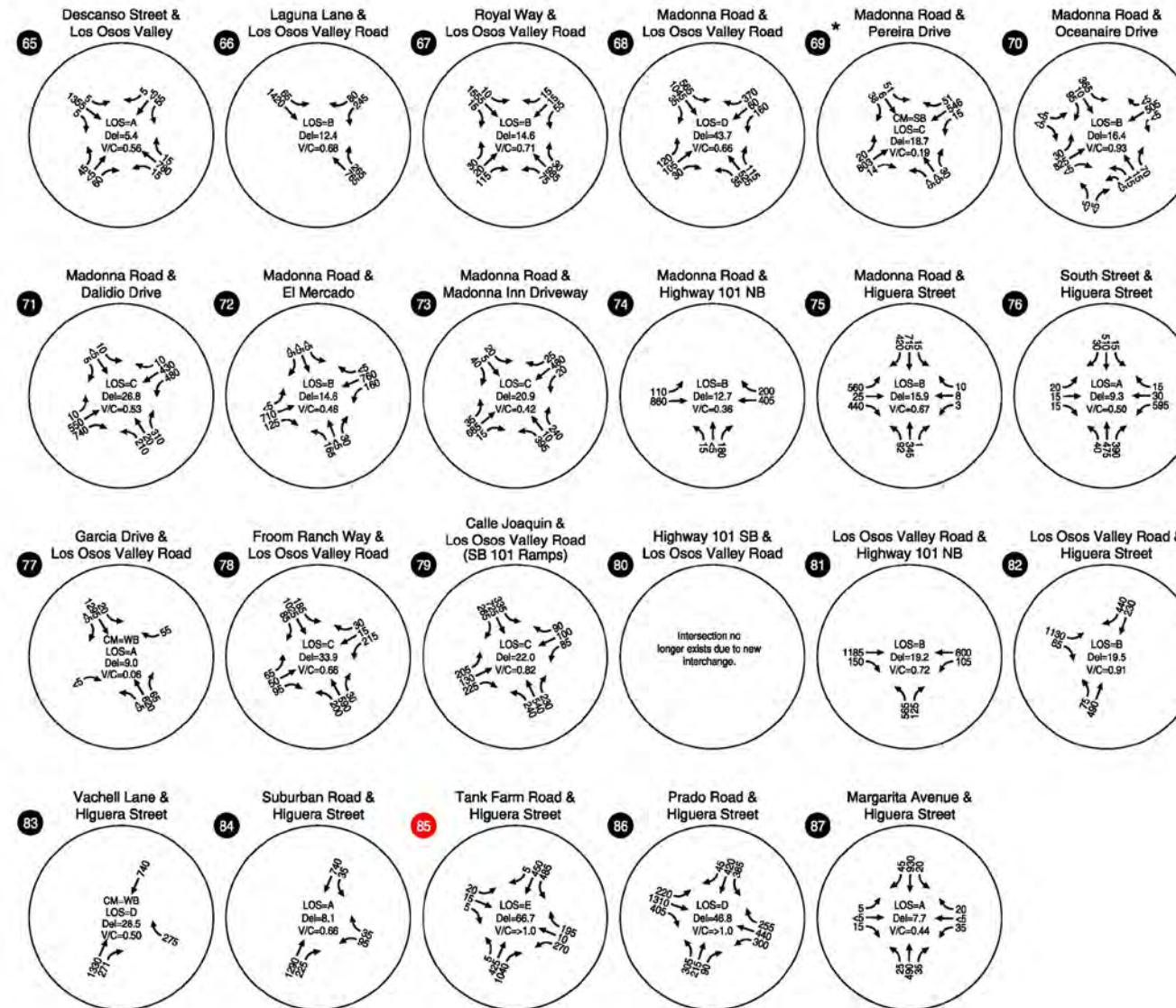


CM = CRITICAL MOVEMENT (TWSC) # LOS OF E OR F
 LOS = INTERSECTION LEVEL OF SERVICE (SIGNALIZED/AWSC)/CRITICAL MOVEMENT LEVEL OF SERVICE (TWSC) # LOS OF A-D
 Del = INTERSECTION AVERAGE CONTROL DELAY (SIGNALIZED/AWSC) / CRITICAL MOVEMENT CONTROL DELAY (TWSC)
 V/C = CRITICAL VOLUME-TO-CAPACITY RATIO
 TWSC = TWO-WAY STOP CONTROL
 AWSC = ALL-WAY STOP CONTROL





CM = CRITICAL MOVEMENT (TWSC) ● LOS OF E OR F
 LOS = INTERSECTION LEVEL OF SERVICE (SIGNALIZED/AWSC)/CRITICAL MOVEMENT LEVEL OF SERVICE (TWSC) ● LOS OF A-D
 Del = INTERSECTION AVERAGE CONTROL DELAY (SIGNALIZED/AWSC) / CRITICAL MOVEMENT CONTROL DELAY (TWSC)
 V/C = CRITICAL VOLUME-TO-CAPACITY RATIO
 TWSC = TWO-WAY STOP CONTROL
 AWSC = ALL-WAY STOP CONTROL



* - MANUAL DELAY STUDY USED IN LIEU OF HCM RESULTS DUE TO UNIQUE GEOMETRY STUDY CONDUCTED 5/8/2012 7:57 - 8:30 AM



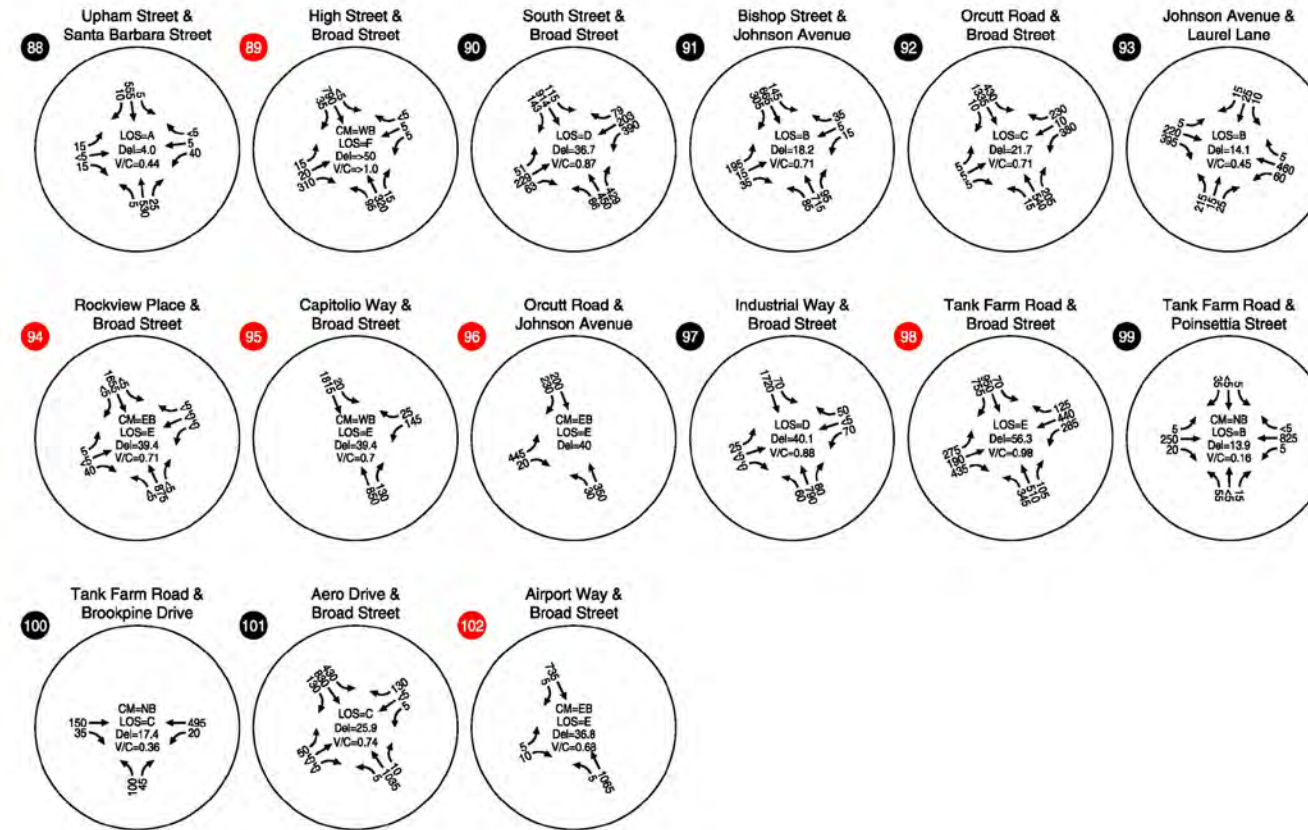


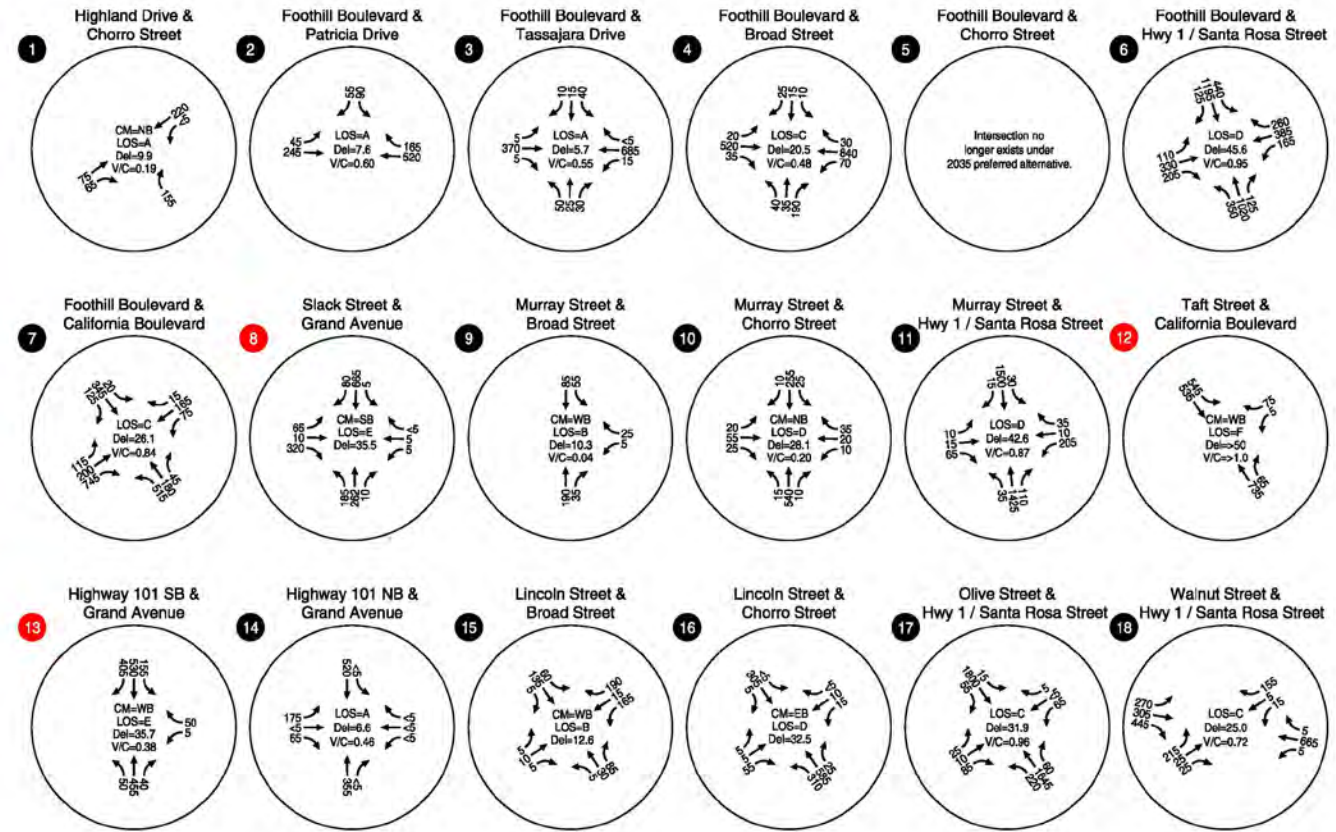
Southeast Sub-Area



City of San Luis Obispo

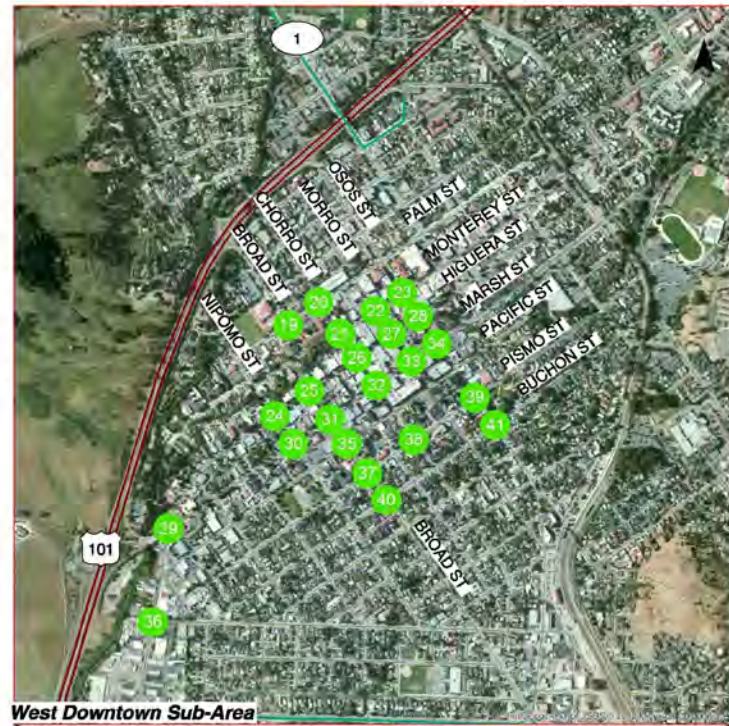
CM = CRITICAL MOVEMENT (TWSC) ● LOS OF E OR F
 LOS = INTERSECTION LEVEL OF SERVICE (SIGNALIZED/AWSC)/CRITICAL MOVEMENT LEVEL OF SERVICE (TWSC) ● LOS OF A-D
 Del = INTERSECTION AVERAGE CONTROL DELAY
 CONTROL DELAY (TWSC)
 V/C = CRITICAL VOLUME-TO-CAPACITY RATIO
 TWSC = TWO-WAY STOP CONTROL
 AWSC = ALL-WAY STOP CONTROL





CM = CRITICAL MOVEMENT (TWSC) ●● LOS OF E OR F
 LOS = INTERSECTION LEVEL OF SERVICE (SIGNALIZED/AWSC)/CRITICAL MOVEMENT LEVEL OF SERVICE (TWSC) ●● LOS OF A-D
 Del = INTERSECTION AVERAGE CONTROL DELAY (SIGNALIZED/AWSC) / CRITICAL MOVEMENT CONTROL DELAY (TWSC)
 V/C = CRITICAL VOLUME-TO-CAPACITY RATIO
 TWSC = TWO-WAY STOP CONTROL
 AWSC = ALL-WAY STOP CONTROL



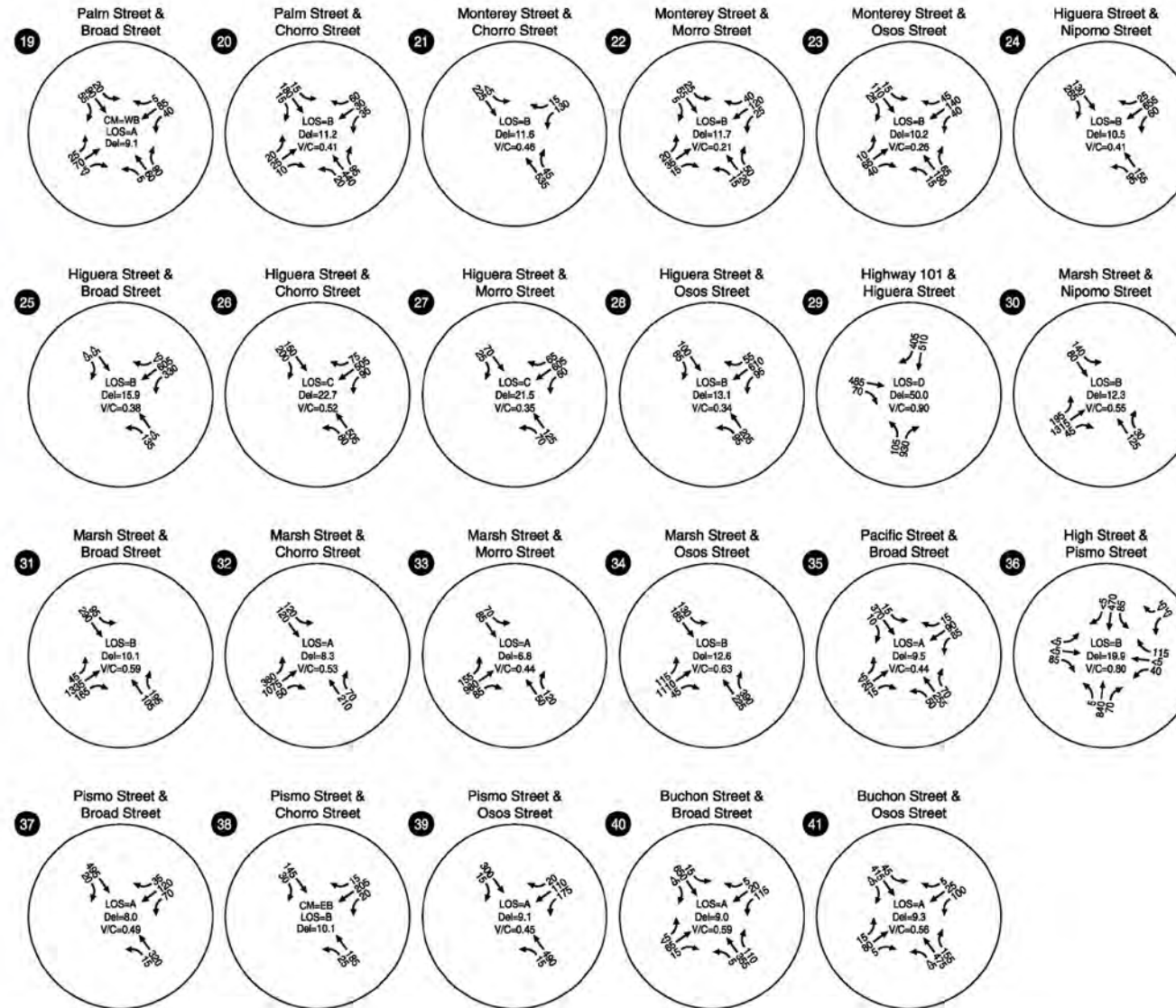


West Downtown Sub-Area



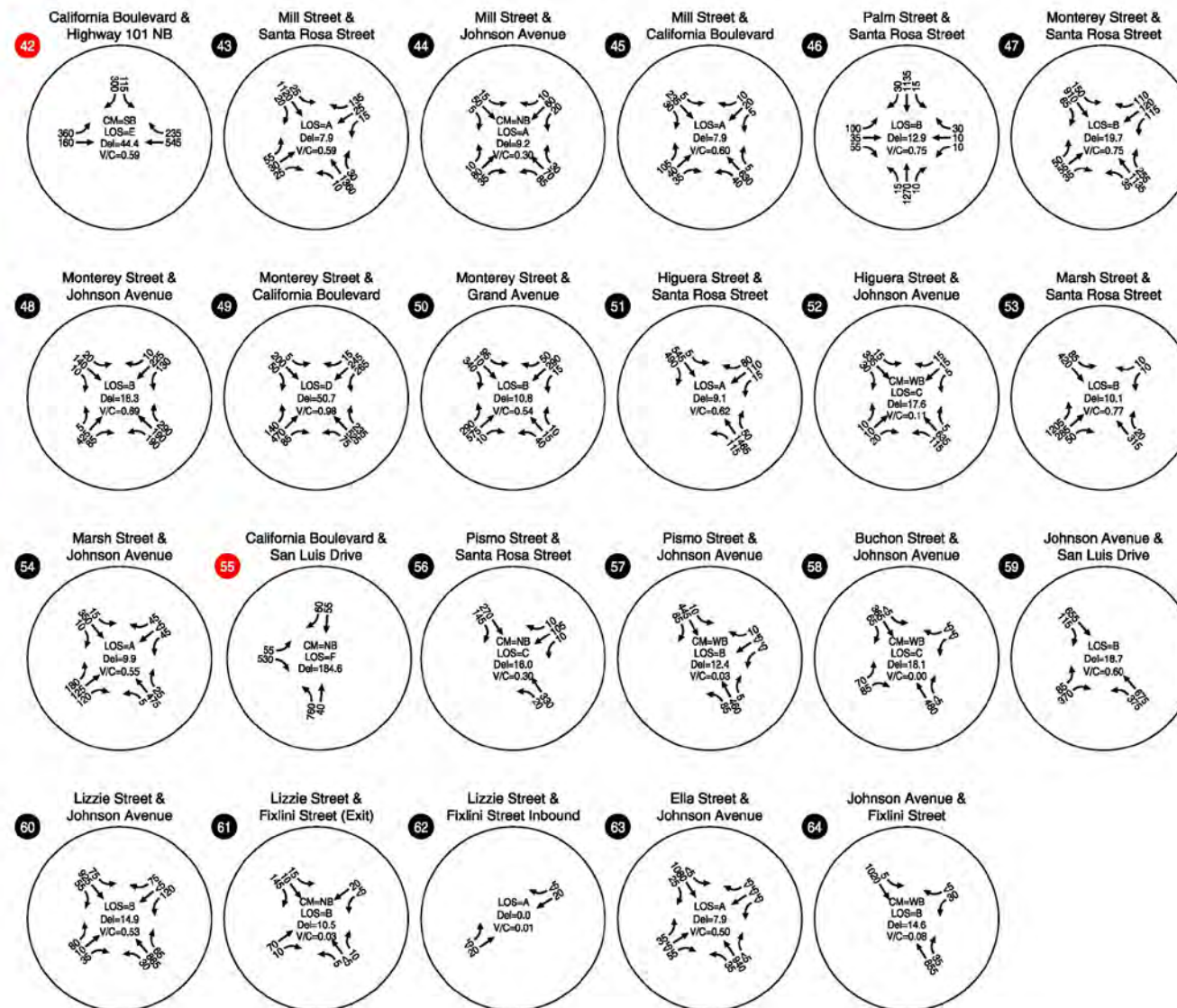
City of San Luis Obispo

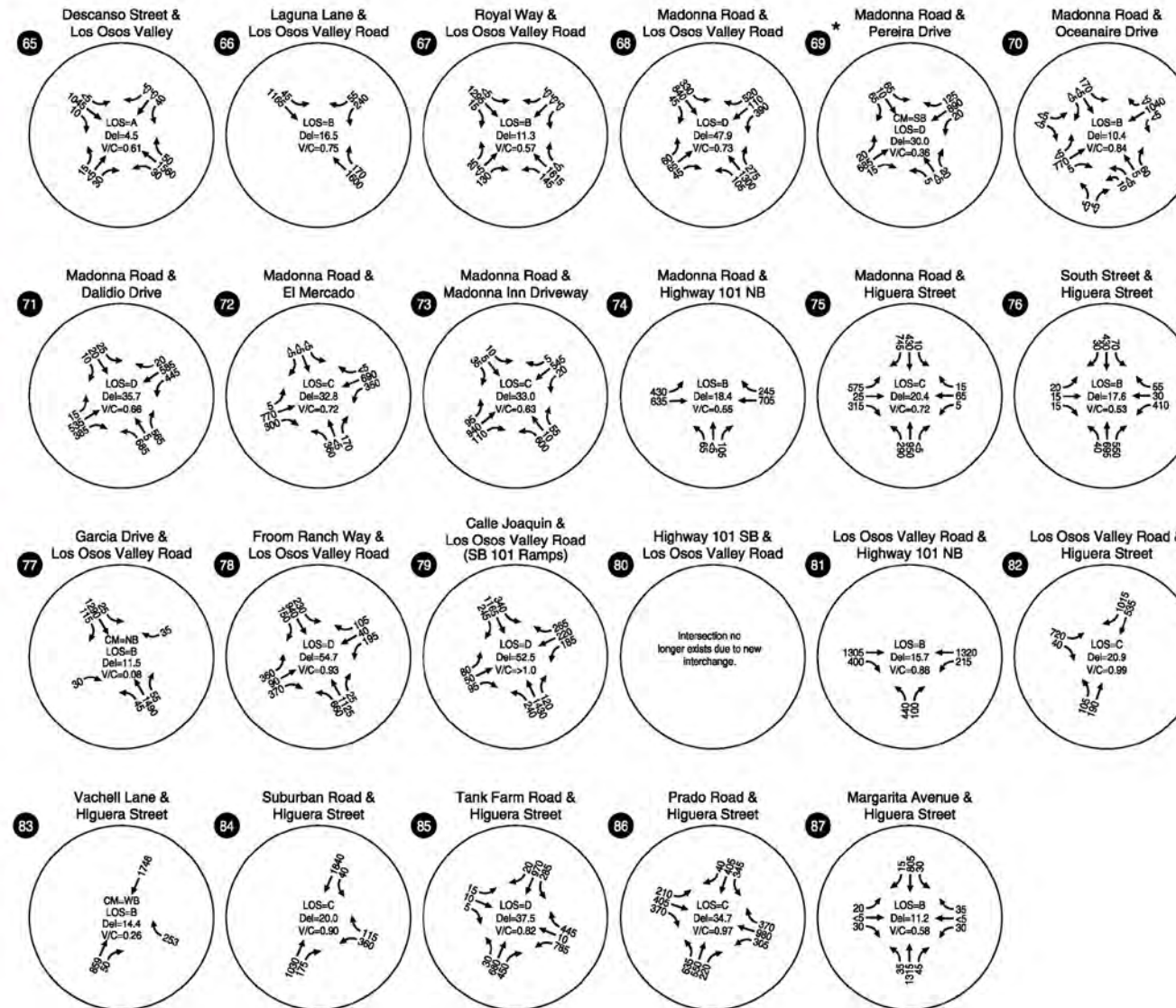
CM = CRITICAL MOVEMENT (TWSC) ● LOS OF E OR F
 LOS = INTERSECTION LEVEL OF SERVICE (SIGNALIZED/AWSC)/CRITICAL MOVEMENT LEVEL OF SERVICE (TWSC) ● LOS OF A-D
 Del = INTERSECTION AVERAGE CONTROL DELAY (SIGNALIZED/AWSC) / CRITICAL MOVEMENT CONTROL DELAY (TWSC)
 V/C = CRITICAL VOLUME-TO-CAPACITY RATIO
 TWSC = TWO-WAY STOP CONTROL
 AWSC = ALL-WAY STOP CONTROL





CM = CRITICAL MOVEMENT (TWSC) ● LOS OF E OR F
 LOS = INTERSECTION LEVEL OF SERVICE (SIGNALIZED/AWSC)/CRITICAL MOVEMENT LEVEL OF SERVICE (TWSC) ● LOS OF A-D
 Del = INTERSECTION AVERAGE CONTROL DELAY (SIGNALIZED/AWSC) / CRITICAL MOVEMENT CONTROL DELAY (TWSC)
 V/C = CRITICAL VOLUME-TO-CAPACITY RATIO
 TWSC = TWO-WAY STOP CONTROL
 AWSC = ALL-WAY STOP CONTROL

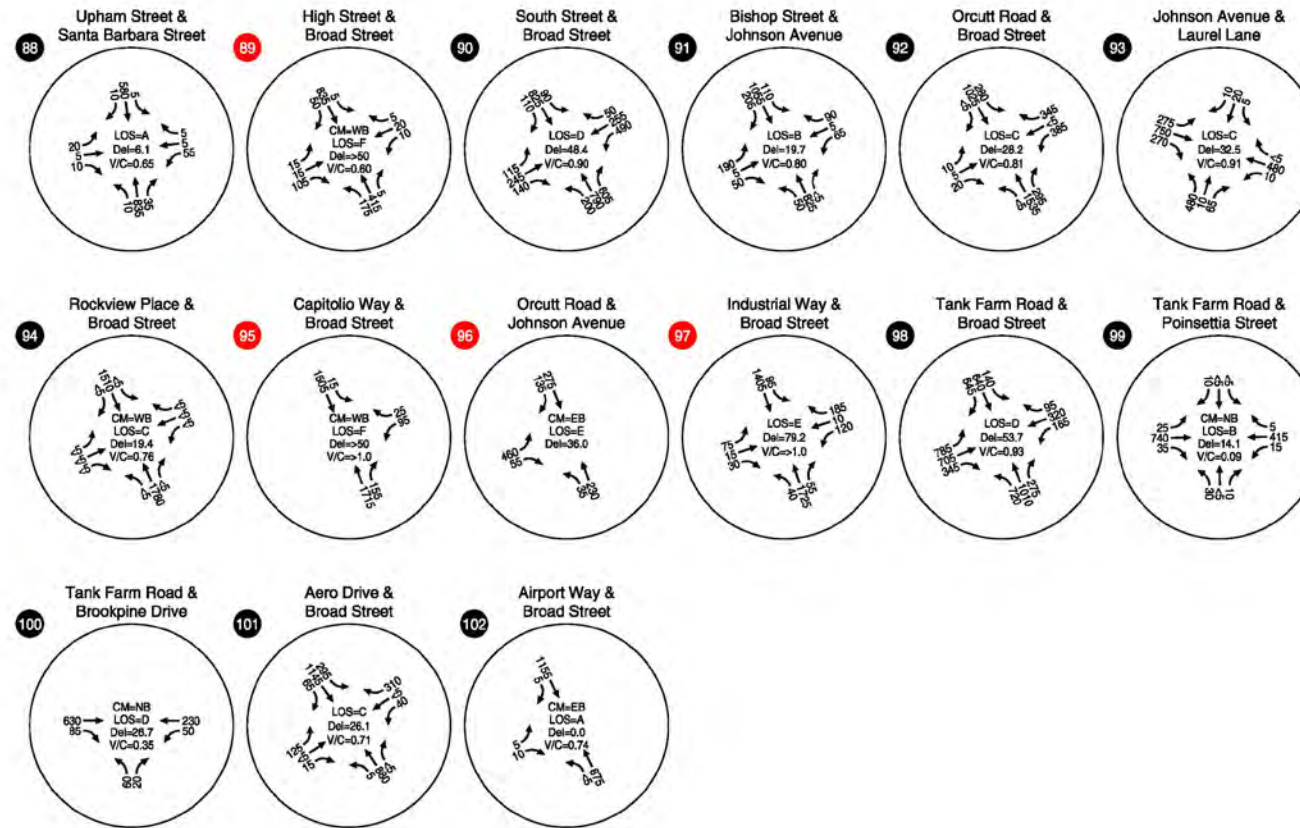




CM = CRITICAL MOVEMENT (TWSC) ● LOS OF E OR F
 LOS = INTERSECTION LEVEL OF SERVICE (SIGNALIZED/AWSC)/CRITICAL MOVEMENT LEVEL OF SERVICE (TWSC) ● LOS OF A-D
 Del = INTERSECTION AVERAGE CONTROL DELAY (SIGNALIZED/AWSC) / CRITICAL MOVEMENT CONTROL DELAY (TWSC)
 V/C = CRITICAL VOLUME-TO-CAPACITY RATIO
 TWSC = TWO-WAY STOP CONTROL
 AWSC = ALL-WAY STOP CONTROL

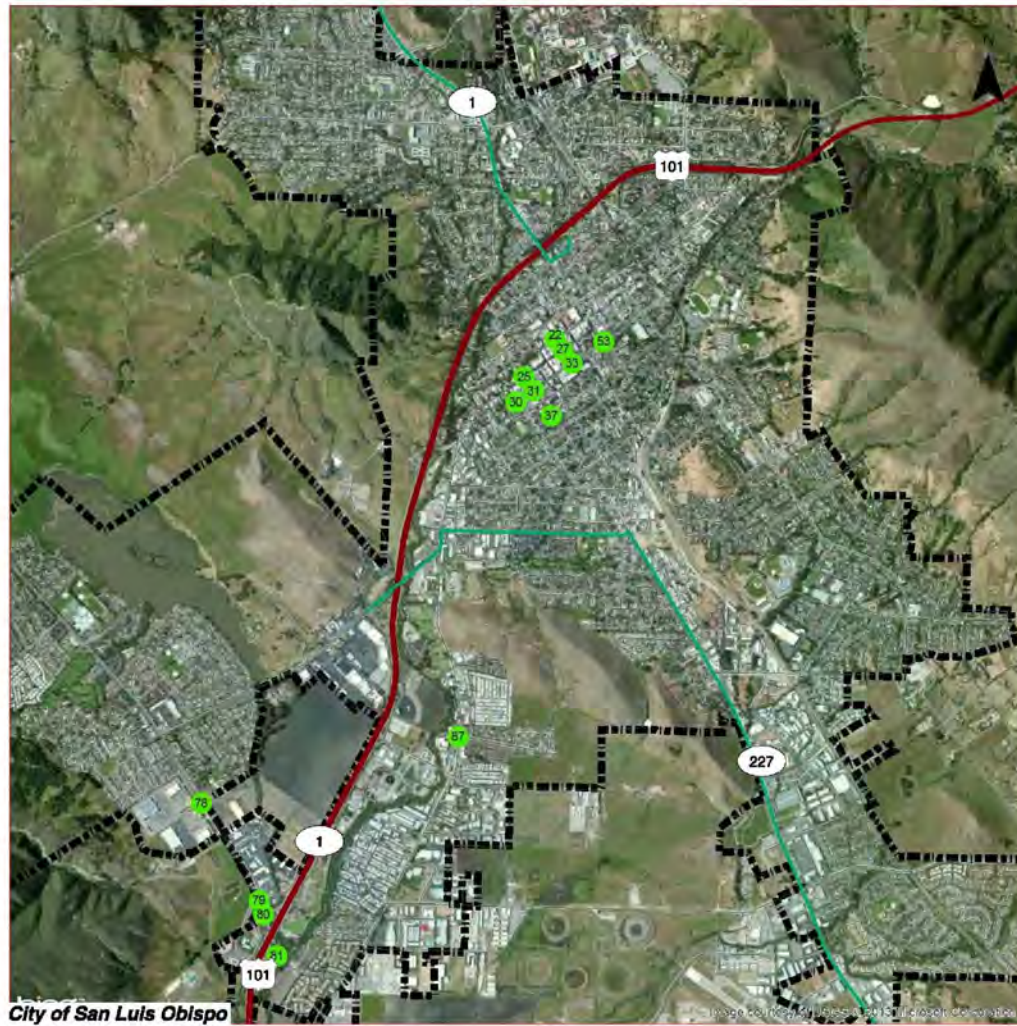
* - MANUAL DELAY STUDY USED IN LIEU OF HCM RESULTS DUE TO UNIQUE GEOMETRY STUDY CONDUCTED 5/8/2012 4:25 - 4:55 PM



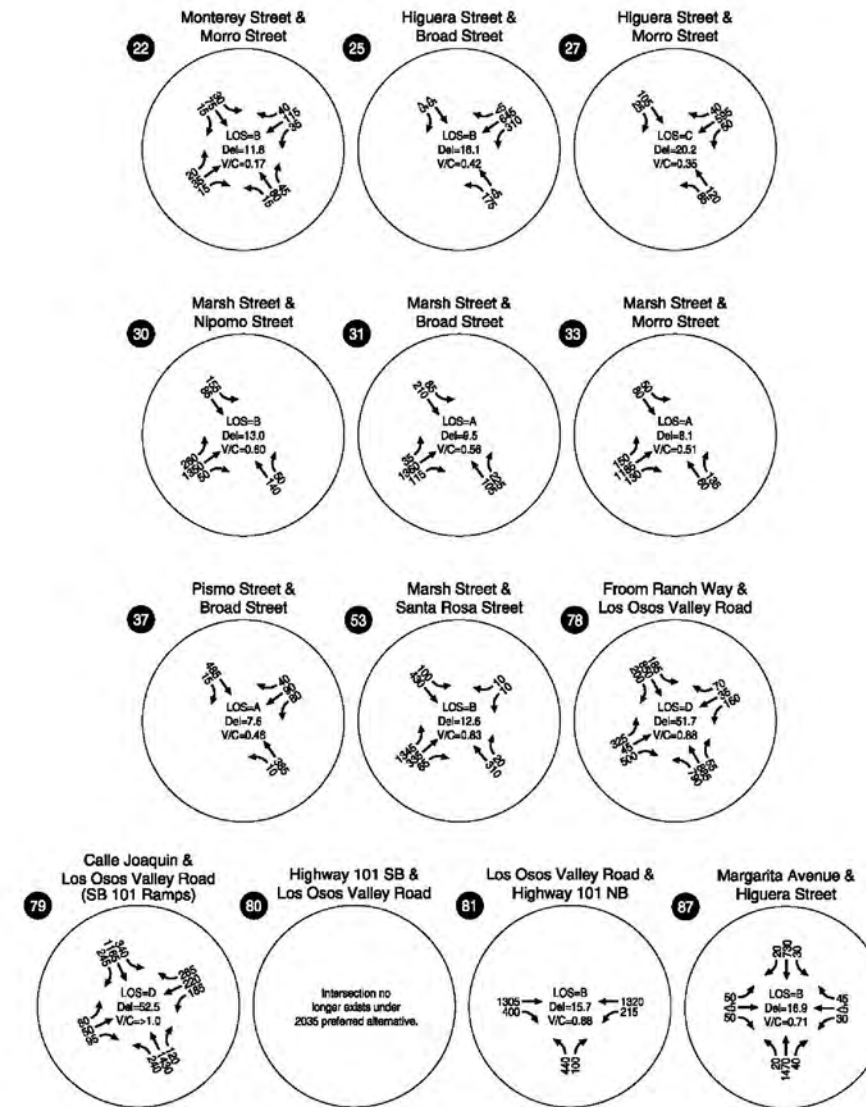


CM = CRITICAL MOVEMENT (TWSC)
 LOS = INTERSECTION LEVEL OF SERVICE (SIGNALIZED/AWSC)/CRITICAL MOVEMENT LEVEL OF SERVICE (TWSC)
 Del = INTERSECTION AVERAGE CONTROL DELAY (SIGNALIZED/AWSC) / CRITICAL MOVEMENT CONTROL DELAY (TWSC)
 V/C = CRITICAL VOLUME-TO-CAPACITY RATIO
 TWSC = TWO-WAY STOP CONTROL
 AWSC = ALL-WAY STOP CONTROL

LOS OF E OR F
LOS OF A-D



CM = CRITICAL MOVEMENT (TWSC) ● LOS OF E OR F
 LOS = INTERSECTION LEVEL OF SERVICE (SIGNALIZED/AWSC)/CRITICAL MOVEMENT LEVEL OF SERVICE (TWSC) ● LOS OF A-D
 Del = INTERSECTION AVERAGE CONTROL DELAY (SIGNALIZED/AWSC) / CRITICAL MOVEMENT CONTROL DELAY (TWSC)
 V/C = CRITICAL VOLUME-TO-CAPACITY RATIO
 TWSC = TWO-WAY STOP CONTROL
 AWSC = ALL-WAY STOP CONTROL



INTERSECTIONS SHOWN ON THIS FIGURE EXPERIENCE PEAK HOUR TRAFFIC DEMAND DURING THE MID-DAY TIME PERIOD

